

BALDOR • RELIANCE

Customer information packet

UCC7100

7.5HP, 3450RPM, 1PH, 60HZ, 184TZ, 3640C, OPEN

Class - None

Division - Not Applicable

Copyright © All product information within this document is subject to ABB Motors and Mechanical Inc. copyright © protection, unless otherwise noted.

5/22/2024 4:33:57 PM

Specifications

Enclosure	OPEN
Frame	184TZ
Frame Material	Steel
Frequency	60.00 Hz
Motor Letter Type	Oil Capacitor Start and Run
Output @ Frequency	7.500 HP @ 60 HZ 10.000 HP @ 60 HZ
Phase	1
Synchronous Speed @ Frequency	3600 RPM @ 60 HZ
Voltage @ Frequency	230.0 V @ 60 HZ
XP Class and Group	None
XP Division	Not Applicable
Agency Approvals	CSA UR
Ambient Temperature	40 °C
Auxillary Box	No Auxillary Box
Auxillary Box Lead Termination	None
Base Indicator	Rigid
Bearing Grease Type	Polyrex EM (-20F +300F)
Blower	None
Current @ Voltage	28.000 A @ 230.0 V
Drip Cover	No Drip Cover
Duty Rating	CONT
Efficiency @ 100% Load	85.5 %
Electrically Isolated Bearing	Not Electrically Isolated
Feedback Device	NO FEEDBACK
Front Face Code	Standard
Front Shaft Indicator	None
Heater Indicator	No Heater
High Voltage Full Load Amps	28.0 a
Insulation Class	F
Inverter Code	Not Inverter

Part detail

Revision	AN
Type	AC
Mech. spec.	36F548
Base	
Status	PRD/A
Elec. spec.	36WGW881
Layout	36LYF548
Eff. date	03-18-2024
CD Diagram	CD0127
Poles	02
Leads	2#10 A PH,2#16 B PH 30" LG Y
Proprietary	False
Created date	01-01-0001

KVA Code	D
Lifting Lugs	Standard Lifting Lugs
Locked Bearing Indicator	Locked Bearing
Motor Lead Exit	Pipe Or Pipe Adaptor
Motor Lead Quantity/Wire Size	2 @ 10 AWG, A PH
Motor Lead Termination	Flying Leads
Motor Standards	NEMA
Motor Type	3640C
Mounting Arrangement	F1
Number of Poles	2
Overall Length	16.88 IN
Power Factor	95
Product Family	General Purpose
Pulley End Bearing Type	Ball
Pulley Face Code	Standard
Pulley Shaft Indicator	Tapped & Key
Rodent Screen	Included
Service Factor	1.00
Shaft Diameter	1.125 IN
Shaft Extension Location	Pulley End
Shaft Ground Indicator	No Shaft Grounding
Shaft Rotation	Reversible
Shaft Slinger Indicator	No Slinger
Speed	3450 rpm
Speed Code	Single Speed
Starting Method	Direct on line
Thermal Device - Bearing	None
Thermal Device - Winding	Normally Closed Thermostat
Vibration Sensor Indicator	No Vibration Sensor
Winding Thermal 1	None
Winding Thermal 2	None

Nameplate

NP1279L							
CAT.NO.	UCC7100						
SPEC.	36F548W881						
HP	7.5-10 AIR OVER						
VOLTS	230						
AMP	28-39						
RPM	3450						
FRAME	184TZ	HZ	60	PH	1		
SER.F.	1.00	CODE	D	DES	-	CL	F
NEMA-NOM-EFF	85.5	PF	95				
RATING	40C AMB-CONT						
CC						USABLE AT 208V	N/A
DE	6206	ODE	6205				
ENCL	OPEN	SN					

NP1263L

CAT.NO.	UCC7100						
SPEC.	36F548W881						
HP	7.5-10 AIR OVER						
VOLTS	230						
AMP	28-39						
RPM	3450						
FRAME	184TZ		HZ	60		PH	1
SER.F.	1.00	CODE	D	DES	-	CL	F
NEMA-NOM-EFF	85.5	PF	95				
RATING	40C AMB-CONT						
CC							
DE	6206	ODE	6205				
ENCL	OPEN	SN					

AC Induction Motor Performance Data

Record # 10869

Typical performance - not guaranteed values

Winding: 36WGW881-R001		Type: 3640C	Enclosure: OPAO	
Nameplate Data			230 V, 60 Hz: Single Voltage Motor	
Rated Output (HP)	7.5-10 AIR OVER		Full Load Torque	15.3 LB-FT
Volts	230		Start Configuration	direct on line
Full Load Amps	28-39		Breakdown Torque	30 LB-FT
R.P.M.	3450		Pull-up Torque	2.3 LB-FT
Hz	60 Phase	1	Locked-rotor Torque	2.6 LB-FT
NEMA Design Code	- KVA Code	D	Starting Current	187 A
Service Factor (S.F.)	1		No-load Current	7 A
NEMA Nom. Eff.	85.5 Power Factor	95	Line-line Res. @ 25°C	0.229 Ω A Ph 0.877 Ω B Ph
Rating - Duty	40C AMB-CONT		Temp. Rise @ Rated Load	

Load Characteristics 230 V, 60 Hz, 10 HP

% of Rated Load	25	50	75	100	125	150
Power Factor	87	94	96	96	95	94
Efficiency	72.4	82.3	84.4	83.9	81.7	78
Speed	3564	3529	3490	3445	3390	3319
Line amperes	12.9	21	30.2	40.4	52	66.1

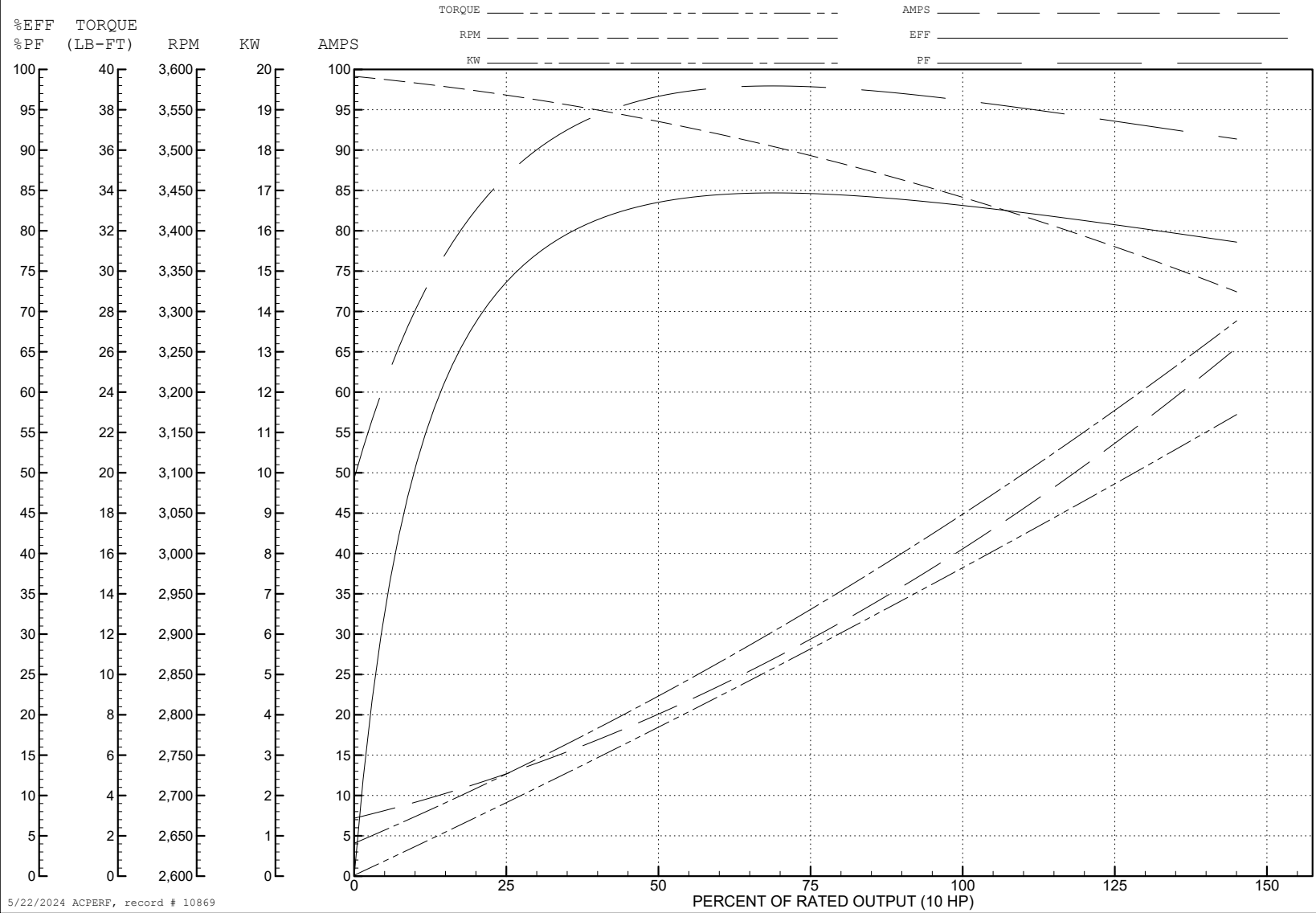
ABB Motors and Mechanical Inc.

WINDING # 36WG881

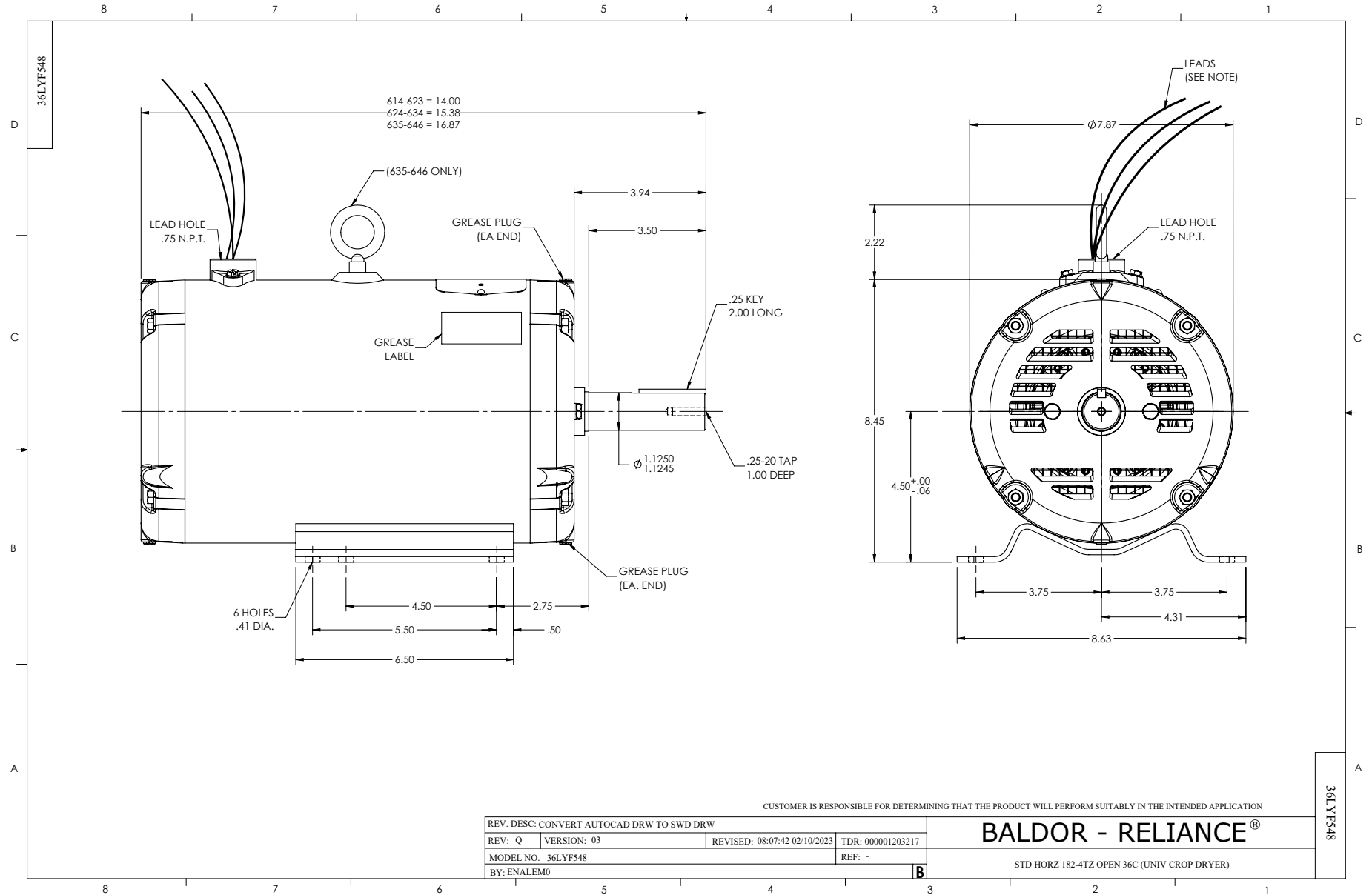
Typical performance - not guaranteed values.

10 HP 1 PH 60 HZ 3450 RPM 230 V 3640C

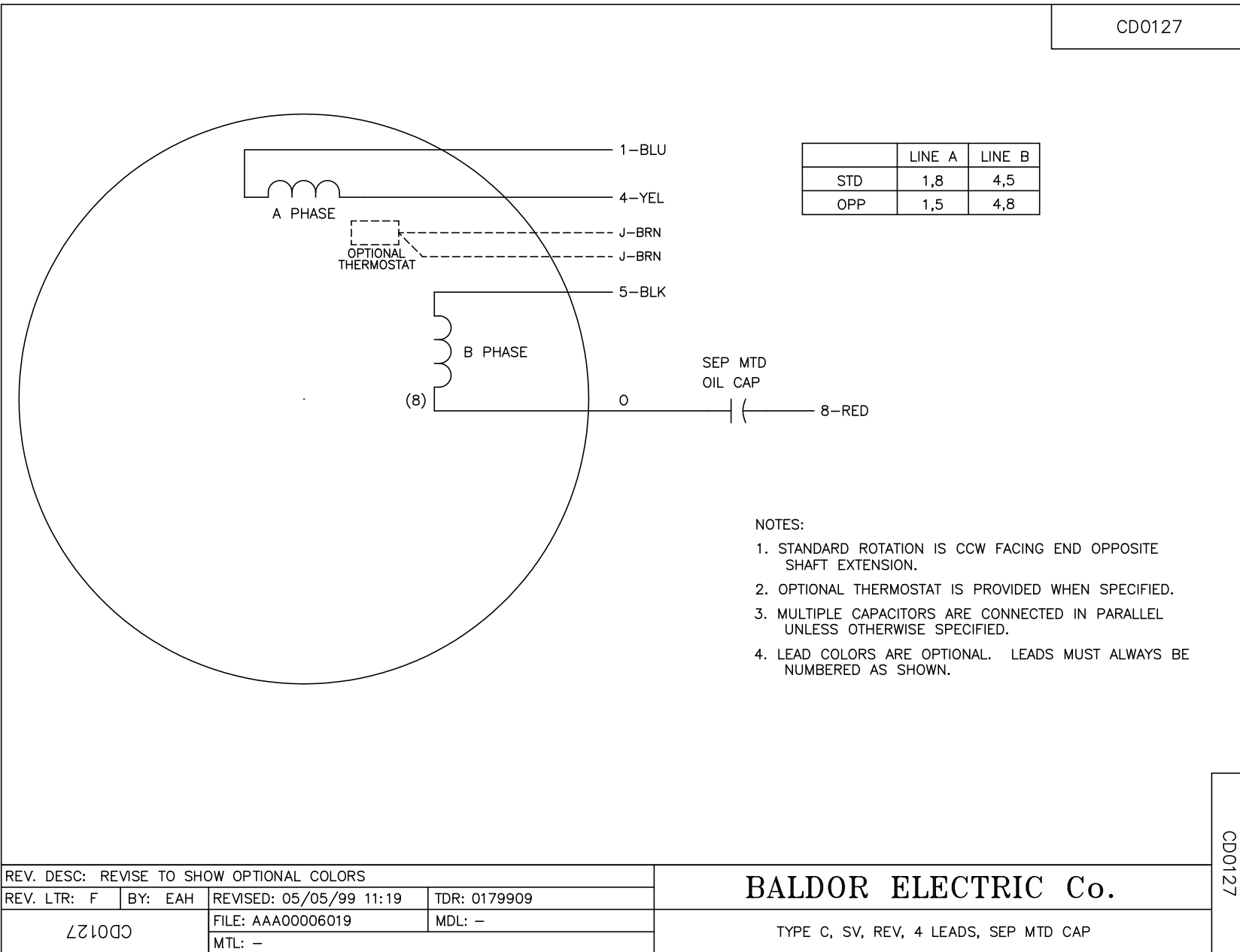
TORQUES (LB-FT): PO=30 PU=2.3 LR=2.6 LRA=187



5/22/2024 ACPERF, record # 10869



CD0127



CD0127

REV. DESC: REVISE TO SHOW OPTIONAL COLORS			
REV. LTR: F	BY: EAH	REVISED: 05/05/99 11:19	TDR: 0179909
FILE: AAA00006019		MDL: -	
MTL: -			

BALDOR ELECTRIC Co.

TYPE C, SV, REV, 4 LEADS, SEP MTD CAP

CD0127