

BALDOR® • RELIANCE™

Customer information packet

UCC5700

5-7HP, 3450RPM, 1PH, 60HZ, 184TZ, 3634C, OPEN

Class - None

Division - Not Applicable

Copyright © All product information within this document is subject to ABB Motors and Mechanical Inc. copyright © protection, unless otherwise noted.

11/6/2024 6:02:06 PM

Specifications

Enclosure	OPEN
Frame	184TZ
Frame Material	Steel
Frequency	60.00 Hz
Haz Area Class and Group	None
Haz Area Division	Not Applicable
Motor Letter Type	Oil Capacitor Start and Run
Output @ Frequency	7.000 HP @ 60 HZ 5.000 HP @ 60 HZ
Phase	1
Synchronous Speed @ Frequency	3600 RPM @ 60 HZ
Voltage @ Frequency	230.0 V @ 60 HZ
Agency Approvals	CSA UR
Ambient Temperature	40 °C
Auxillary Box	No Auxillary Box
Auxillary Box Lead Termination	None
Base Indicator	Rigid
Bearing Grease Type	Polyrex EM (-20F +300F)
Blower	None
Current @ Voltage	19.500 A @ 230.0 V
Drip Cover	No Drip Cover
Duty Rating	CONT
Efficiency @ 100% Load	79.0 %
Electrically Isolated Bearing	Not Electrically Isolated
Feedback Device	NO FEEDBACK
Front Face Code	Standard
Front Shaft Indicator	None
Heater Indicator	No Heater
High Voltage Full Load Amps	19.5 a
Insulation Class	F
Inverter Code	Not Inverter

Part detail

Revision	AM
Type	AC
Mech. spec.	36F548
Base	
Status	PRD/A
Elec. spec.	36WGW873
Layout	36LYF548
Eff. date	03-18-2024
CD Diagram	CD0127
Poles	02
Leads	2#10 A PH,2#16 B PH 30" LG Y
Proprietary	False
Created date	01-01-0001

KVA Code	C
Lifting Lugs	No Lifting Lugs
Locked Bearing Indicator	Locked Bearing
Motor Lead Exit	Pipe Or Pipe Adaptor
Motor Lead Quantity/Wire Size	2 @ 10 AWG, A PH
Motor Lead Termination	Flying Leads
Motor Standards	NEMA
Motor Type	3634C
Mounting Arrangement	F1
Number of Poles	2
Overall Length	15.38 IN
Power Factor	97
Product Family	General Purpose
Pulley End Bearing Type	Ball
Pulley Face Code	Standard
Pulley Shaft Indicator	Tapped & Key
Rodent Screen	Included
Service Factor	1.00
Shaft Diameter	1.125 IN
Shaft Extension Location	Pulley End
Shaft Ground Indicator	No Shaft Grounding
Shaft Rotation	Reversible
Shaft Slinger Indicator	No Slinger
Speed	3450 rpm
Speed Code	Single Speed
Starting Method	Direct on line
Thermal Device - Bearing	None
Thermal Device - Winding	Normally Closed Thermostat
Vibration Sensor Indicator	No Vibration Sensor
Winding Thermal 1	None
Winding Thermal 2	None

Nameplate

NP1279L							
CAT.NO.	UCC5700						
SPEC.	36F548W873						
HP	5-7 AIR OVER						
VOLTS	230						
AMP	19.5-29						
RPM	3450						
FRAME	184TZ	HZ	60	PH	1		
SER.F.	1.00	CODE	C	DES	-	CL	F
NEMA-NOM-EFF	79	PF	97				
RATING	40C AMB-CONT						
CC	USABLE AT 208V						N/A
DE	6206	ODE	6205				
ENCL	OPEN	SN					

NP1263L

CAT.NO.	UCC5700						
SPEC.	36F548W873						
HP	5-7 AIR OVER						
VOLTS	230						
AMP	19.5-29						
RPM	3450						
FRAME	184TZ		HZ	60		PH	1
SER.F.	1.00	CODE	C	DES	-	CL	F
NEMA-NOM-EFF	79	PF	97				
RATING	40C AMB-CONT						
CC							
DE	6206	ODE	6205				
ENCL	OPEN	SN					

AC Induction Motor Performance Data

Record # 10868

Typical performance - not guaranteed values

Winding: 36WGW873-R001		Type: 3634C	Enclosure: OPAO	
Nameplate Data			230 V, 60 Hz: Single Voltage Motor	
Rated Output (HP)	5-7 AIR OVER		Full Load Torque	10.7 LB-FT
Volts	230		Start Configuration	direct on line
Full Load Amps	19.5-29		Breakdown Torque	22 LB-FT
R.P.M.	3450		Pull-up Torque	1.3 LB-FT
Hz	60 Phase	1	Locked-rotor Torque	1.5 LB-FT
NEMA Design Code	- KVA Code	C	Starting Current	125 A
Service Factor (S.F.)	1		No-load Current	2.9 A
NEMA Nom. Eff.	79 Power Factor	97	Line-line Res. @ 25°C	0.356 Ω A Ph 1.24 Ω B Ph
Rating - Duty	40C AMB-CONT		Temp. Rise @ Rated Load	

Load Characteristics 230 V, 60 Hz, 7 HP

% of Rated Load	25	50	75	100	125	150
Power Factor	97	99	99	98	97	96
Efficiency	72.2	82.5	84.6	83.7	81	76.3
Speed	3563	3527	3485	3437	3376	3291
Line amperes	8.1	14	20.5	27.7	36	46.5

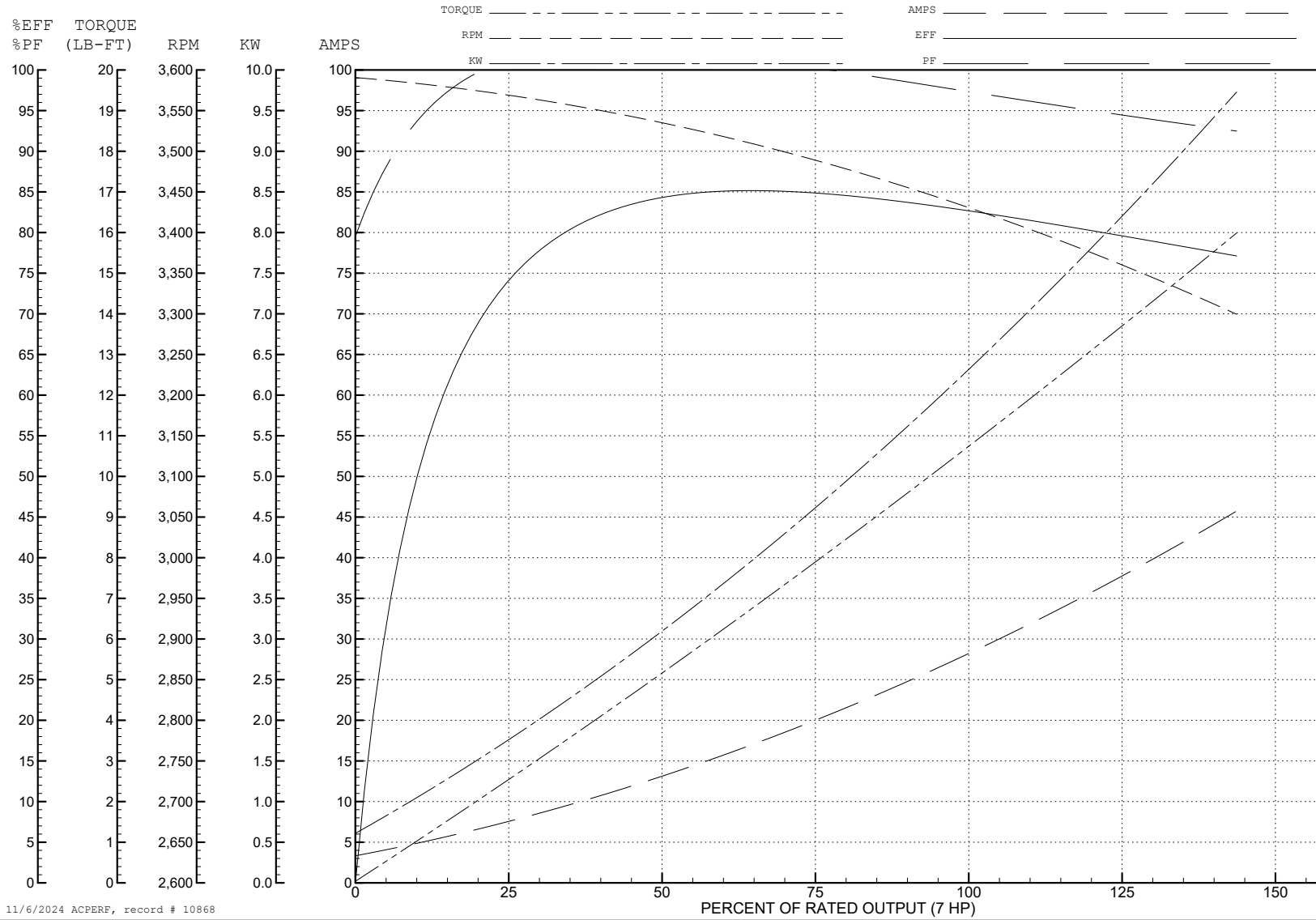
ABB Motors and Mechanical Inc.

WINDING # 36WGW873

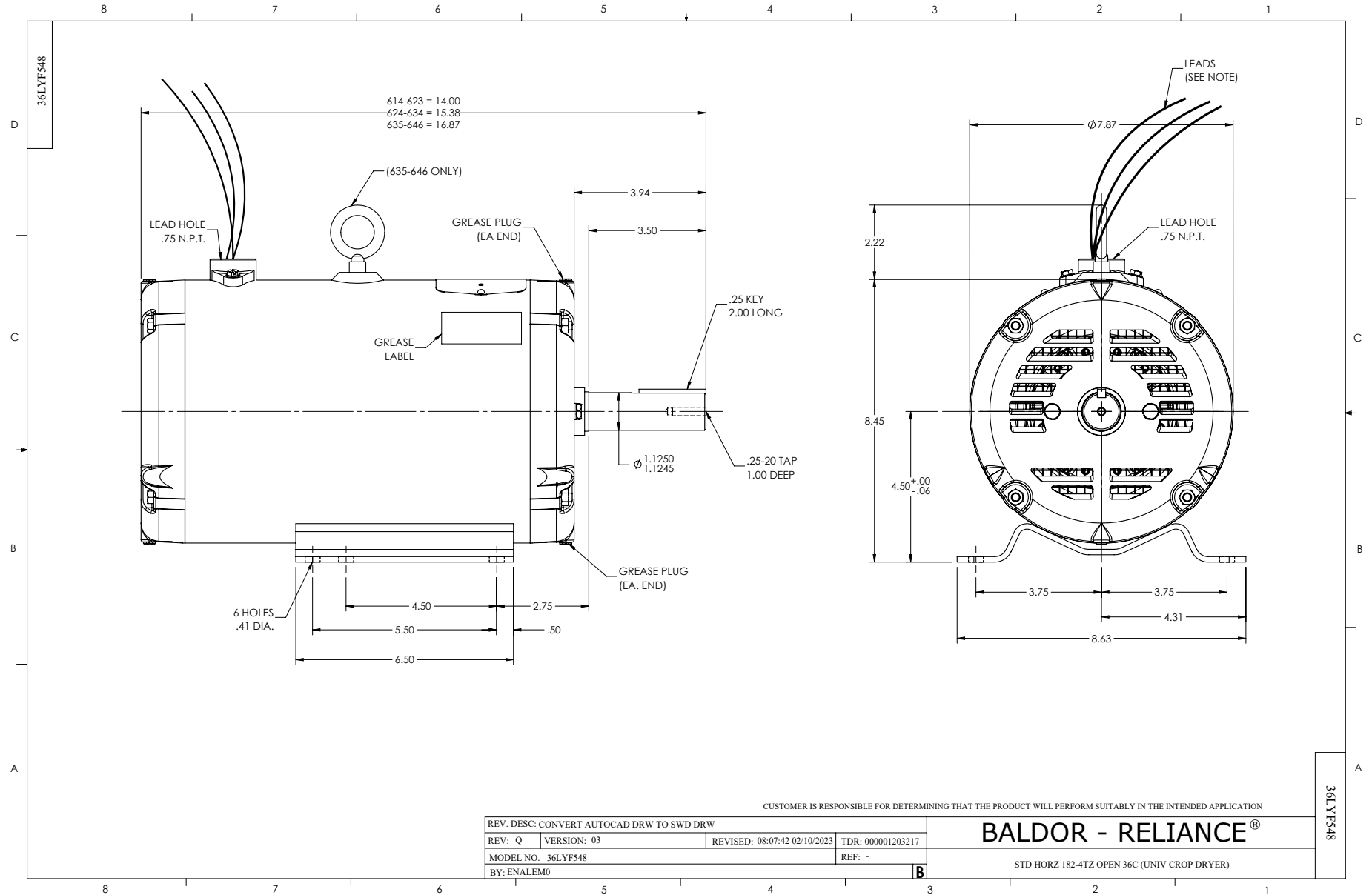
7 HP 1 PH 60 HZ 3450 RPM 230 V 3634C

Typical performance - not guaranteed values.

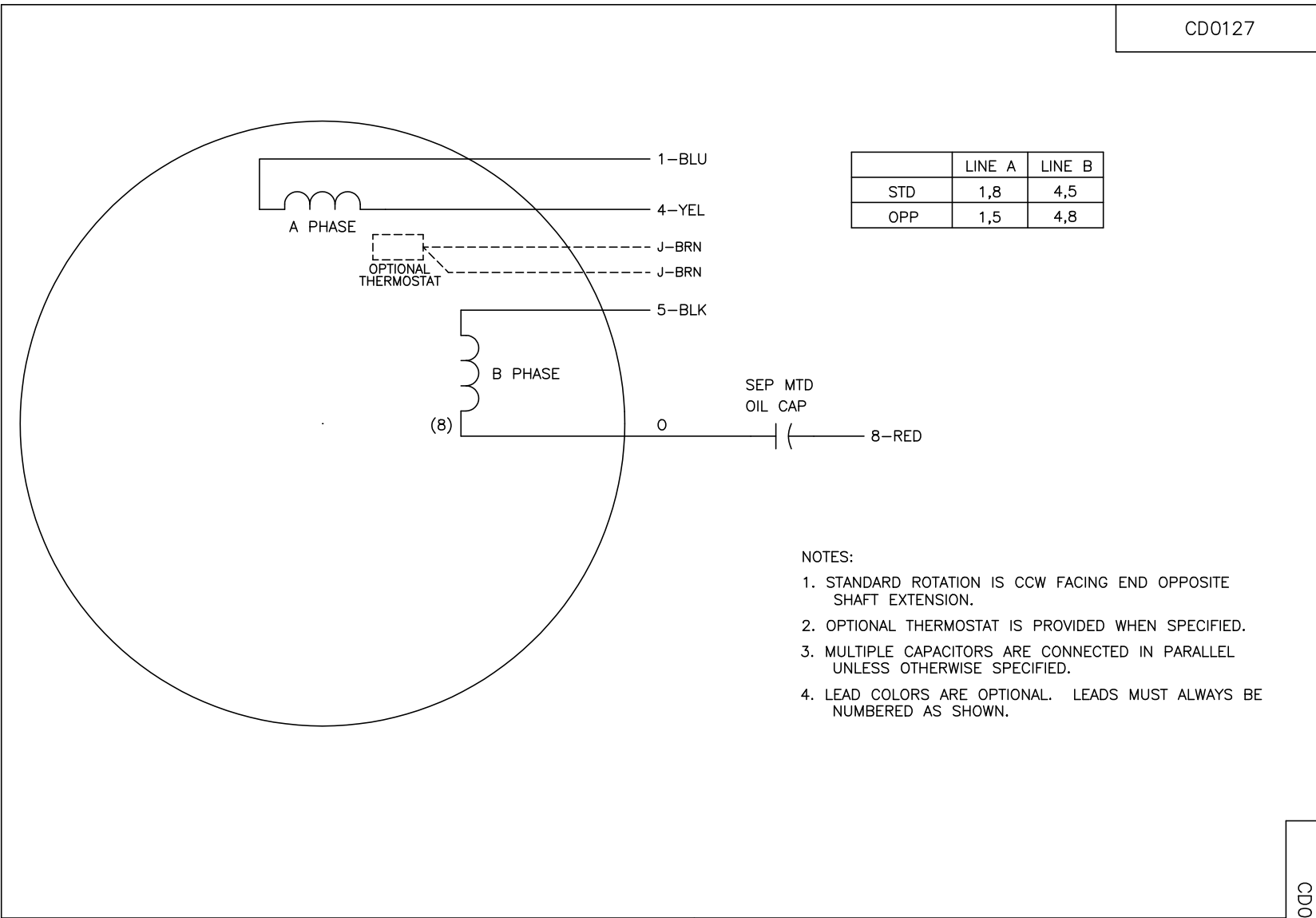
TORQUES (LB-FT): PO=22 PU=1.3 LR=1.5 LRA=125



11/6/2024 ACPERF, record # 10868



CD0127



NOTES:

1. STANDARD ROTATION IS CCW FACING END OPPOSITE SHAFT EXTENSION.
2. OPTIONAL THERMOSTAT IS PROVIDED WHEN SPECIFIED.
3. MULTIPLE CAPACITORS ARE CONNECTED IN PARALLEL UNLESS OTHERWISE SPECIFIED.
4. LEAD COLORS ARE OPTIONAL. LEADS MUST ALWAYS BE NUMBERED AS SHOWN.

CD0127

REV. DESC: REVISE TO SHOW OPTIONAL COLORS			
REV. LTR: F	BY: EAH	REVISED: 05/05/99 11:19	TDR: 0179909
CD0127		FILE: AAA00006019	MDL: -
		MTL: -	

BALDOR ELECTRIC Co.

TYPE C, SV, REV, 4 LEADS, SEP MTD CAP