

BALDOR • RELIANCE

Customer information packet

UCC10150

10-15HP, 3450RPM, 1PH, 60HZ, 215Z, 3740C, OPEN

Class - None

Division - Not Applicable

Copyright © All product information within this document is subject to ABB Motors and Mechanical Inc. copyright © protection, unless otherwise noted.

9/9/2024 7:56:41 AM

Specifications

Enclosure	OPEN
Frame	215Z
Frame Material	Steel
Frequency	60.00 Hz
Haz Area Class and Group	None
Haz Area Division	Not Applicable
Motor Letter Type	Oil Capacitor Start and Run
Output @ Frequency	15.000 HP @ 60 HZ 10.000 HP @ 60 HZ
Phase	1
Synchronous Speed @ Frequency	3600 RPM @ 60 HZ
Voltage @ Frequency	230.0 V @ 60 HZ
Agency Approvals	CSA UR
Ambient Temperature	40 °C
Auxillary Box	No Auxillary Box
Auxillary Box Lead Termination	None
Base Indicator	Rigid
Bearing Grease Type	Polyrex EM (-20F +300F)
Blower	None
Current @ Voltage	41.000 A @ 230.0 V
Drip Cover	No Drip Cover
Duty Rating	CONT
Efficiency @ 100% Load	83.0 %
Electrically Isolated Bearing	Not Electrically Isolated
Feedback Device	NO FEEDBACK
Front Face Code	Standard
Front Shaft Indicator	None
Heater Indicator	No Heater
High Voltage Full Load Amps	41.0 a
Insulation Class	F
Inverter Code	Not Inverter

Part detail

Revision	AS
Type	AC
Mech. spec.	37E764
Base	
Status	PRD/A
Elec. spec.	37WGW977
Layout	37LYE764
Eff. date	03-18-2024
CD Diagram	CD0127
Poles	02
Leads	2#8 A PH,2#14 B PH 32" LG Y
Proprietary	False
Created date	01-01-0001

KVA Code	C
Lifting Lugs	Standard Lifting Lugs
Locked Bearing Indicator	Locked Bearing
Motor Lead Exit	Pipe Or Pipe Adaptor
Motor Lead Quantity/Wire Size	2 @ 8 AWG, A PH
Motor Lead Termination	Flying Leads
Motor Standards	NEMA
Motor Type	3740C
Mounting Arrangement	F1
Number of Poles	2
Overall Length	18.57 IN
Power Factor	98
Product Family	General Purpose
Pulley End Bearing Type	Sealed Bearing
Pulley Face Code	Standard
Pulley Shaft Indicator	Tapped & Key
Rodent Screen	Included
Service Factor	1.00
Shaft Diameter	1.125 IN
Shaft Extension Location	Pulley End
Shaft Ground Indicator	No Shaft Grounding
Shaft Rotation	Reversible
Shaft Slinger Indicator	No Slinger
Speed	3450 rpm
Speed Code	Single Speed
Starting Method	Direct on line
Thermal Device - Bearing	None
Thermal Device - Winding	Normally Closed Thermostat
Vibration Sensor Indicator	No Vibration Sensor
Winding Thermal 1	None
Winding Thermal 2	None

Nameplate

NP1279L							
CAT.NO.	UCC10150						
SPEC.	37E764W977						
HP	10-15 AIR OVER						
VOLTS	230						
AMP	41-57						
RPM	3450						
FRAME	215Z	HZ	60	PH	1		
SER.F.	1.00	CODE	C	DES	-	CL	F
NEMA-NOM-EFF	83	PF	98				
RATING	40C AMB-CONT						
CC						USABLE AT 208V	N/A
DE	6307	ODE	6206				
ENCL	OPEN	SN					

NP1263L

CAT.NO.	UCC10150						
SPEC.	37E764W977						
HP	10-15 AIR OVER						
VOLTS	230						
AMP	41-57						
RPM	3450						
FRAME	215Z		HZ	60		PH	1
SER.F.	1.00	CODE	C	DES	-	CL	F
NEMA-NOM-EFF	83	PF	98				
RATING	40C AMB-CONT						
CC							
DE	6307	ODE	6206				
ENCL	OPEN	SN					

AC Induction Motor Performance Data

Record # 11959

Typical performance - not guaranteed values

Winding: 37WGW977-R001		Type: 3740C	Enclosure: OPAO	
Nameplate Data			230 V, 60 Hz: Single Voltage Motor	
Rated Output (HP)	10-15 AIR OVER	Full Load Torque	22.8 LB-FT	
Volts	230	Start Configuration	direct on line	
Full Load Amps	41-57	Breakdown Torque	46 LB-FT	
R.P.M.	3450	Pull-up Torque	5.3 LB-FT	
Hz	60 Phase	1	Locked-rotor Torque	6.5 LB-FT
NEMA Design Code	- KVA Code	C	Starting Current	245 A
Service Factor (S.F.)		1	No-load Current	16.3 A
NEMA Nom. Eff.	83 Power Factor	98	Line-line Res. @ 25°C	0.196 Ω A Ph 0.344 Ω B Ph
Rating - Duty	40C AMB-CONT		Temp. Rise @ Rated Load	

Load Characteristics 230 V, 60 Hz, 15 HP

% of Rated Load	25	50	75	100	125	150
Power Factor	78	92	98	99	99	99
Efficiency	68.7	81.5	85.1	85.2	83.2	79.1
Speed	3565	3533	3496	3453	3400	3324
Line amperes	22.7	32.4	43.9	57.4	73.1	93.2

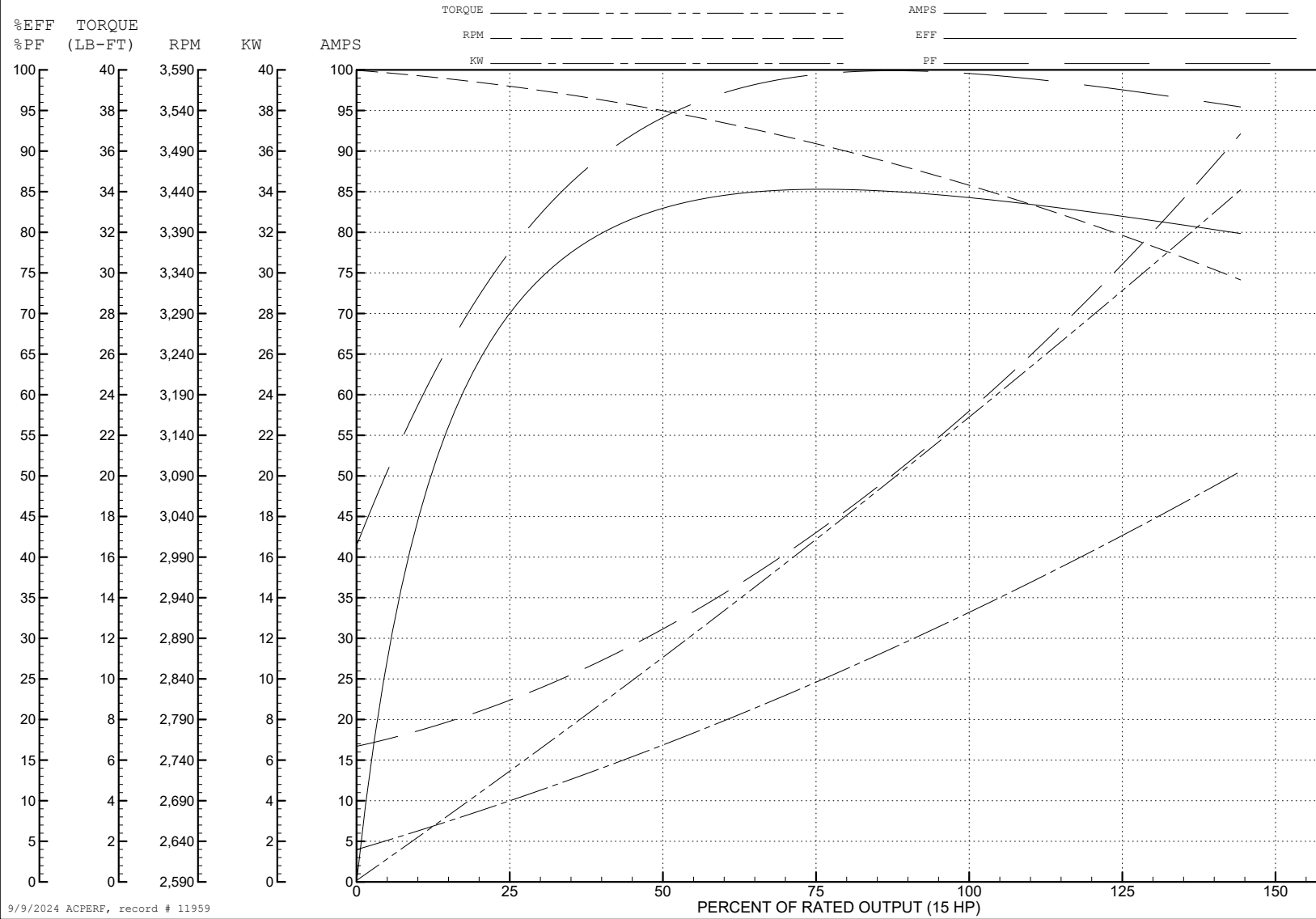
ABB Motors and Mechanical Inc.

WINDING # 37WGW977

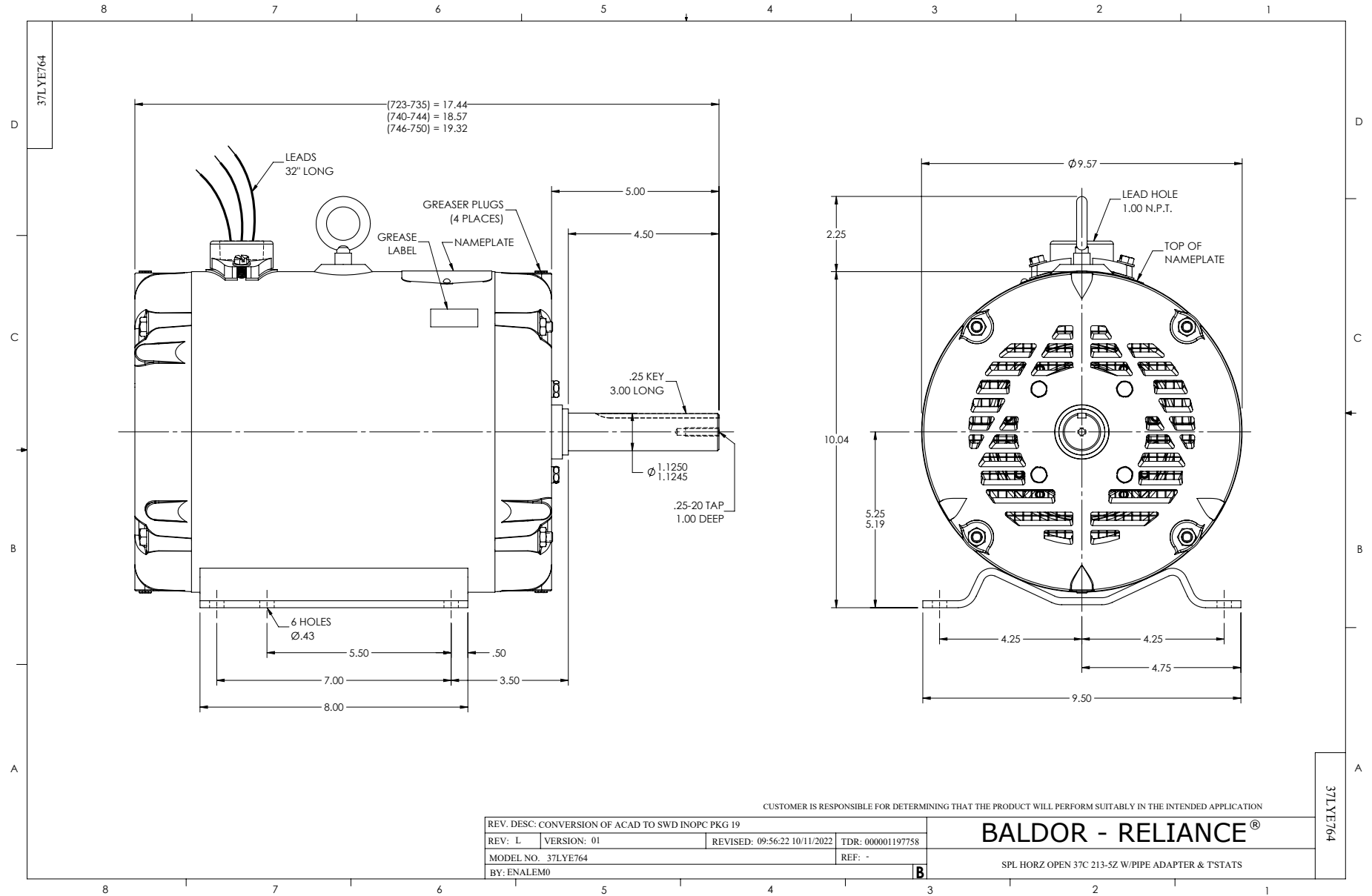
Typical performance - not guaranteed values.

15 HP 1 PH 60 HZ 3450 RPM 230 V 3740C

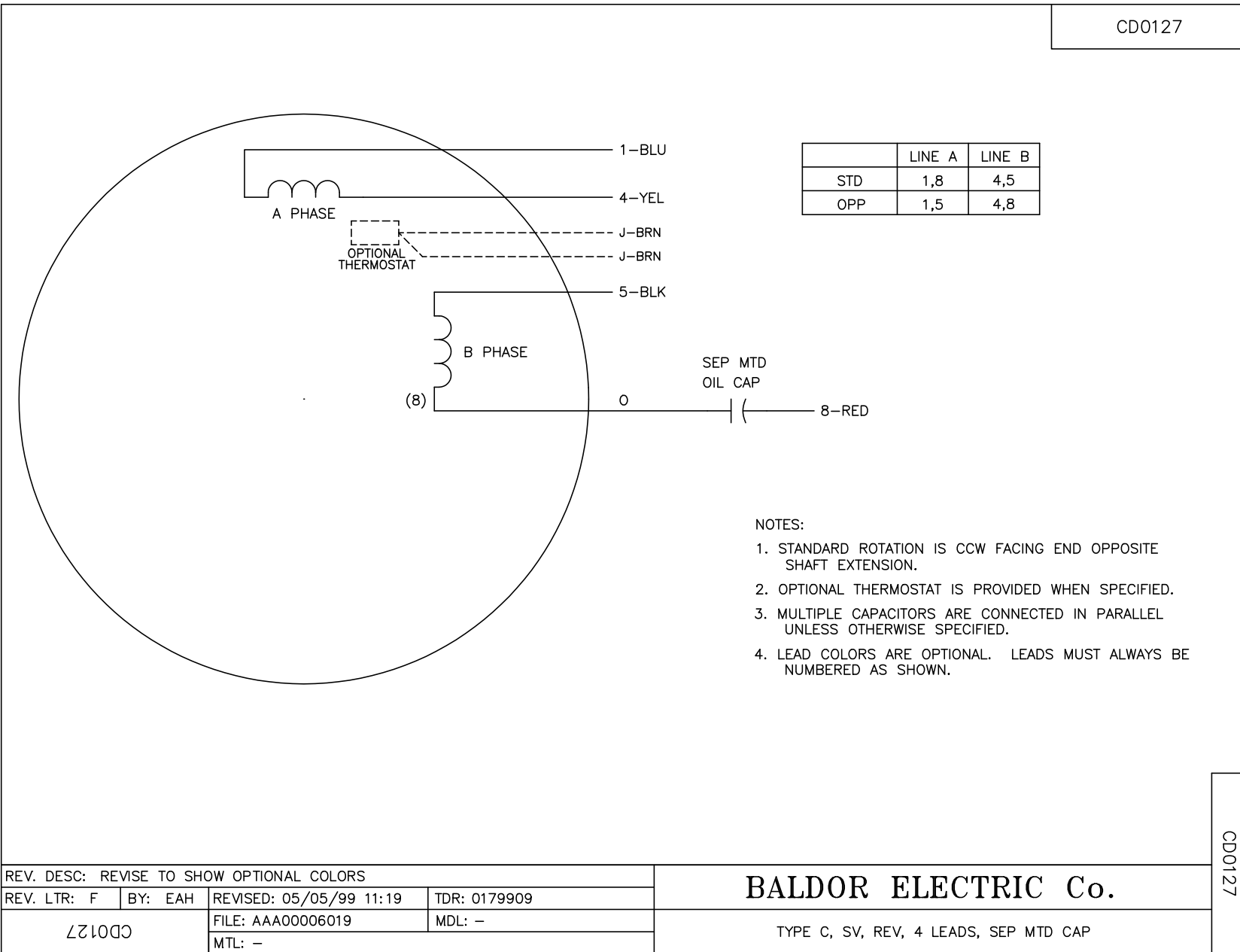
TORQUES (LB-FT): PO=46 PU=5.3 LR=6.5 LRA=245



9/9/2024 ACPERF, record # 11959



CD0127



NOTES:

1. STANDARD ROTATION IS CCW FACING END OPPOSITE SHAFT EXTENSION.
2. OPTIONAL THERMOSTAT IS PROVIDED WHEN SPECIFIED.
3. MULTIPLE CAPACITORS ARE CONNECTED IN PARALLEL UNLESS OTHERWISE SPECIFIED.
4. LEAD COLORS ARE OPTIONAL. LEADS MUST ALWAYS BE NUMBERED AS SHOWN.

CD0127

REV. DESC: REVISE TO SHOW OPTIONAL COLORS			
REV. LTR: F	BY: EAH	REVISED: 05/05/99 11:19	TDR: 0179909
CD0127		FILE: AAA00006019	MDL: -
		MTL: -	

BALDOR ELECTRIC Co.

TYPE C, SV, REV, 4 LEADS, SEP MTD CAP