



Customer information packet

SUM74004-4

40HP, 1755RPM, 3PH, 60HZ, 250TY, XPNV, V1

Class - CLI GP C,D

Division - Not Applicable

Specifications

Enclosure	XPNV
Frame	250TY
Frame Material	Iron
Frequency	60.00 Hz
Haz Area Class and Group	CLI GP C,D
Haz Area Division	Not Applicable
Motor Letter Type	Three Phase
Phase	3
Agency Approvals	CCSA US
Base Indicator	Rigid
Bearing Grease Type	Polyrex EM (-20F +300F)
Cable Length	25 FOOT
Design Code	B
Drip Cover	No Drip Cover
Duty Rating	CONT
Haz Area Temp Code	T3C
Heater Indicator	No Heater
Insulation Class	F
Inverter Code	Not Inverter
IP Rating	NONE
KVA Code	F
Lifting Lugs	Standard Lifting Lugs
Motor Standards	NEMA
Motor Type	M
Mounting Arrangement	V1
Number of Poles	4
Product Family	Pump - Centrifugal
Pulley End Bearing Type	Ball
Pulley Face Code	Standard
Service Factor	1.15
Shaft Diameter	1.750 IN
Shaft Rotation	Reversible

Part detail

Revision	B
Type	AC
Mech. spec.	
Base	
Status	PRD/A
Elec. spec.	85935
Layout	619738-005
Eff. date	11-05-2021
CD Diagram	416820-001
Poles	///
Leads	
Proprietary	False
Created date	05-21-2021

Shaft Slinger Indicator	No Slinger
Speed Code	Single Speed
Starting Method	Direct on line
Thermal Device - Winding	Normally Closed Thermostat

Nameplate

000613007MN

CAT NO	SUM74004-4	SPEC NO.	S25-CWS0-0008						
HP	40	AMPS	50	VOLTS	460	DESIGN	B		
FRAME SIZE	250TY	RPM	1755	HZ	60	AMB	40	SF	1.15
D.E. BRG.	60BC03JPP30A	PH	3	DUTY	15 MIN	INSUL	F		
O.D.E. BRG.	40BC02JPG30A	TYPE	P	ENCL	TENV	CODE	F		
		POWER FACTOR		NEMA-NOM-EFF					
		MAX CORR KVAR		GUARANTEED EFFICIENCY					
		NEMA NOM/CSA QUOTED EFF @		100% LOAD					
SER.NO.		MOTOR WEIGHT	549	LBS.					
	*15 MIN IN AIR ;SUB. IN								
	SEWAGE / WATER ONLY								

000613007RC

CLASS I GROUP	C D X	NO.	
CLASS II GROUP	X X X		
OPERATING TEMP CODE	T3C		

000613007MR

CAT NO	SUM74004-4	SPEC NO.	S25-CWS0-0008						
HP	40	AMPS	50	VOLTS	460	DESIGN	B		
FRAME SIZE	250TY	RPM	1755	HZ	60	AMB	40	SF	1.15
D.E. BRG.	60BC03JPP30A	PH	3	DUTY	15 MIN	INSUL	F		
O.D.E. BRG.	40BC02JPG30A	TYPE	P	ENCL	TENV	CODE	F		
		POWER FACTOR		NEMA-NOM-EFF					
		MAX CORR KVAR		GUARANTEED EFFICIENCY					
		NEMA NOM/CSA QUOTED EFF @		100% LOAD					
SER.NO.		MOTOR WEIGHT	549	LBS.					
	*15 MIN IN AIR ;SUB. IN								
	SEWAGE / WATER ONLY								

AC induction motor performance data

Record #85935 - Typical performance - not guaranteed values

Winding	09WGA0212
Type	0954M
Enclosure	PART

Nameplate data

Rated Output			40
Volts			230/460
Full Load Amps			100/50
R.P.M.			1755
Hz	60	Phase	3
KVA Code			F
S.F.			1.15
NEMA Nom. Eff.	93	Power Factor	80
Duty			15 MIN
S.F. Amps			

460 V, 60 Hz:

High Voltage Connection

Full Load Torque	119 LB-FT
Start Configuration	direct on line
Breakdown Torque	362 LB-FT
Pull-up Torque	159 LB-FT
Locked-rotor Torque	184 LB-FT
Starting Current	271 A
No-load Current	22.48
Line-line Res. @ 25°C	0.253 Ω
Temp. Rise @ Rated Load	80°C
Temp. Rise @ S.F. Load	99°C
Locked-rotor Power Factor	34.6
Rotor inertia	2.35 lb-ft²

Load Characteristics 460 V, 60 Hz, 40 HP

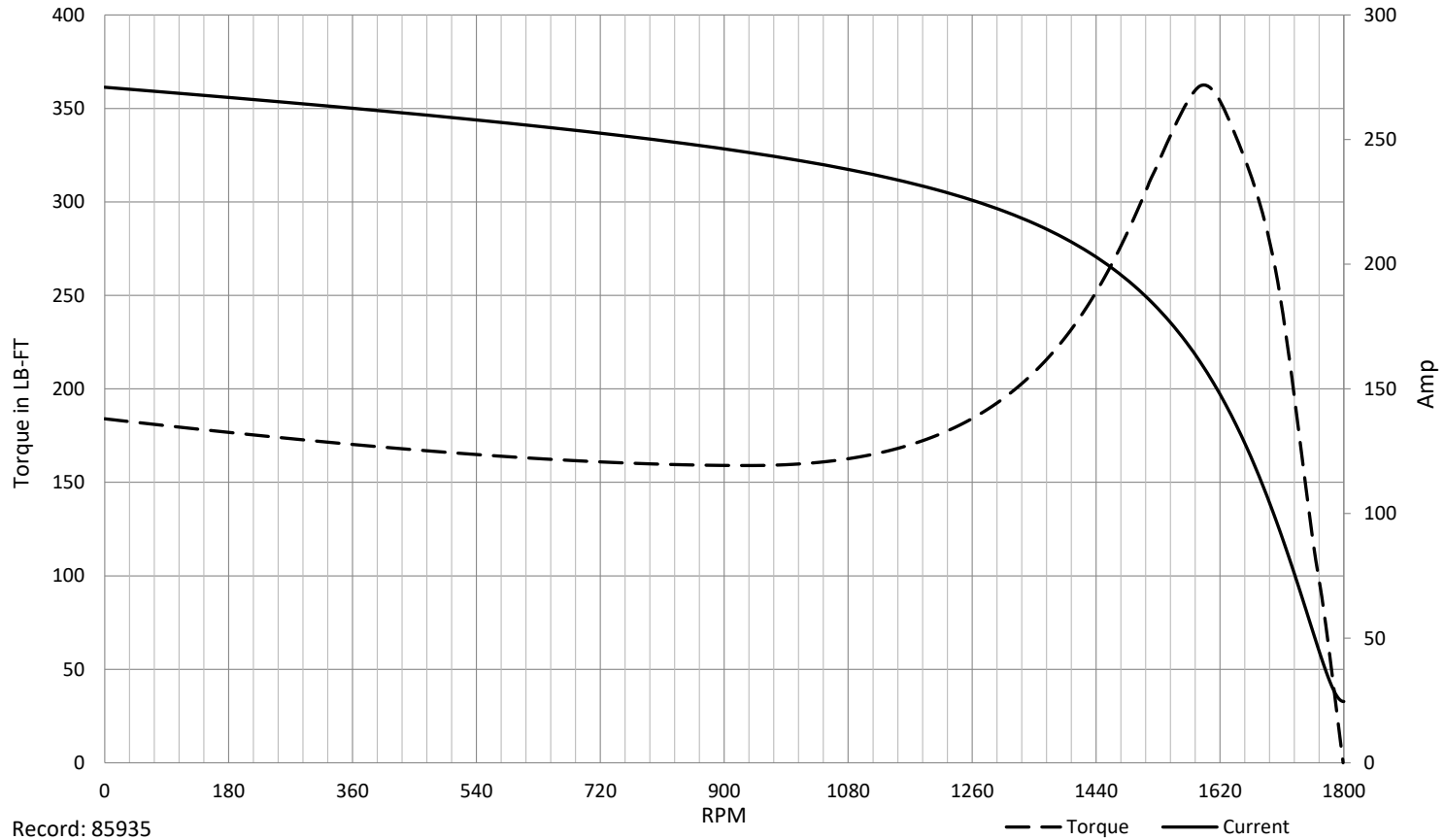
% of Rated Load	NL	25	50	75	100	125	150	SF
Power Factor	3	41	65	75	80	82	81	81
Efficiency	0	90.4	93.2	93.5	93	92.1	91	92.5
Speed	1799	1789	1779	1768	1755	1741	1726	1747
Line amperes	22.48	25.15	31.2	40.07	50.28	62.12	75.57	57.4

SPEED TORQUE / SPEED CURRENT CURVES

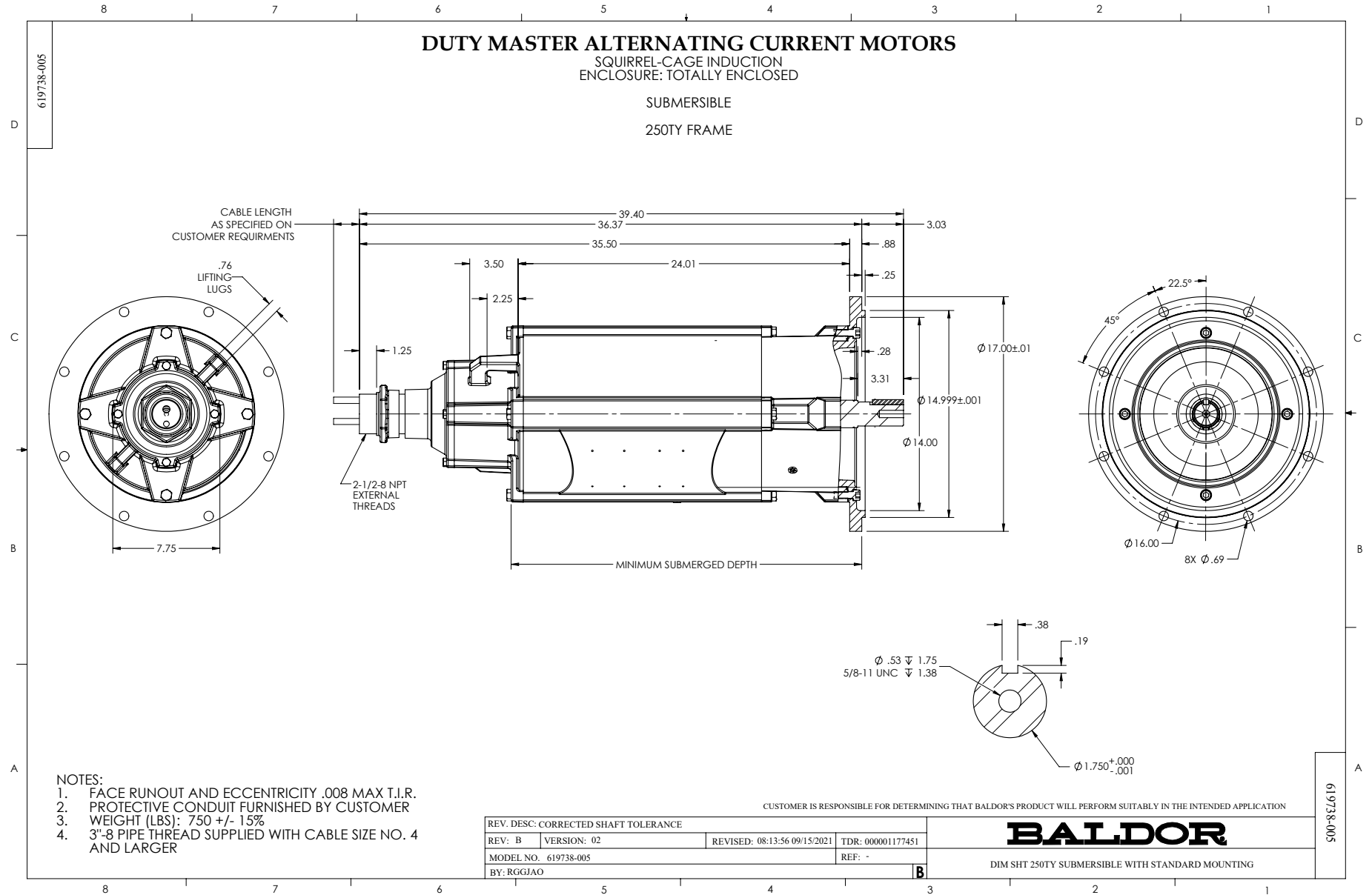


09WGA0212

40HP 460V 60HZ

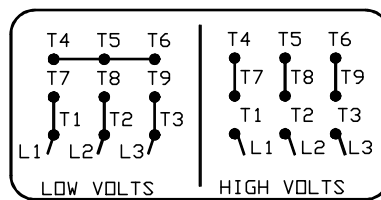
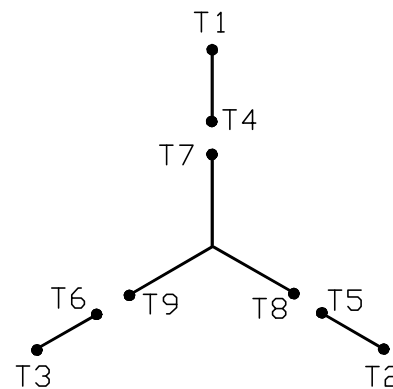


Record: 85935



416820-001

A-C MOTOR
 CONNECTION DIAGRAM
 STANDARD 9 LEAD Y CONNECTED



(N. P. 1575-A)

416820-001

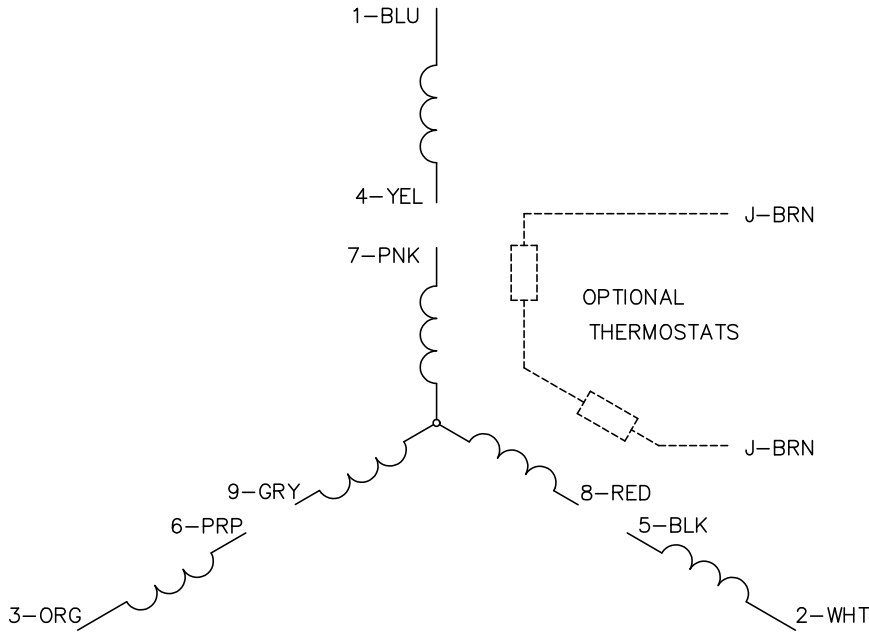
REV. DESC: FONT CHANGE FOR PDF SEARCHABLE		
REV. LTR: A	VERSION: 01	TDR: 000001009382
FILE: \MGA\00000\659	REVISED: 10: 33: 07 12/21/2016	BY: MGHMTT
MTL: -		© □

BALDOR

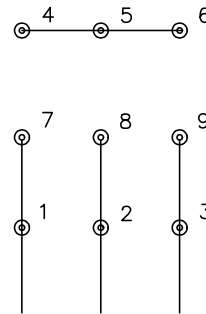
CONN DIAG - STANDARD 9 LEAD, Y CONNECTED

SH 1 of 1

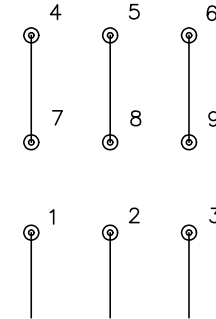
CD0005



LOW VOLTAGE (2Y)



HIGH VOLTAGE (1Y)



NOTES:

1. INTERCHANGE ANY TWO LINE LEADS TO REVERSE ROTATION.
2. OPTIONAL THERMOSTATS ARE PROVIDED WHEN SPECIFIED.
3. ACTUAL NUMBER OF INTERNAL PARALLEL CIRCUITS MAY BE A MULTIPLE OF THOSE SHOWN ABOVE.
4. LEAD COLORS ARE OPTIONAL. LEADS MUST ALWAYS BE NUMBERED AS SHOWN.

CD0005

REV. DESC: REVISE TO SHOW OPTIONAL COLORS			
REV. LTR: E	BY: JLP	REVISED: 01/19/99 10:15	TDR: 0171435
S00000		FILE: AAA00005140	MDL: -
		MTL: -	

BALDOR ELECTRIC Co.

3PH, DV, 9 LEADS