

**BALDOR • RELIANCE**

---

# Customer information packet

## SUM71504

15HP, 1765RPM, 3PH, 60HZ, 210TY, XPNV, V1

Class - CLI GP C,D

Division - Not Applicable

Copyright © All product information within this document is subject to ABB Motors and Mechanical Inc. copyright © protection, unless otherwise noted.

12/2/2024 9:11:30 PM

## Specifications

Enclosure	XPNV
Frame	210TY
Frame Material	Iron
Frequency	60.00 Hz
Haz Area Class and Group	CLI GP C,D
Haz Area Division	Not Applicable
Motor Letter Type	Three Phase
Phase	3
Agency Approvals	CCSA US
Base Indicator	Rigid
Bearing Grease Type	Polyrex EM (-20F +300F)
Cable Length	25 FOOT
Design Code	B
Drip Cover	No Drip Cover
Duty Rating	CONT
Haz Area Temp Code	T3C
Heater Indicator	No Heater
Insulation Class	F
Inverter Code	Not Inverter
IP Rating	NONE
KVA Code	H
Lifting Lugs	Standard Lifting Lugs
Motor Standards	NEMA
Motor Type	M
Mounting Arrangement	V1
Number of Poles	4
Product Family	Pump - Centrifugal
Pulley End Bearing Type	Ball
Pulley Face Code	Standard
Service Factor	1.00
Shaft Diameter	1.437 IN
Shaft Rotation	Reversible

## Part detail

Revision	A
Type	AC
Mech. spec.	
Base	
Status	PRD/A
Elec. spec.	86078
Layout	619738-019
Eff. date	11-12-2024
CD Diagram	
Poles	///
Leads	
Proprietary	False
Created date	07-11-2024

<b>Shaft Slinger Indicator</b>	No Slinger
<b>Speed Code</b>	Single Speed
<b>Starting Method</b>	Direct on line
<b>Thermal Device - Winding</b>	Normally Closed Thermostat

**Nameplate**

**000613007MS**

<b>CAT.NO.</b>	SUM71504	<b>SPEC NO.</b>	S21-CWS0-0300			
<b>SER.NO.</b>		<b>FRAME SIZE</b>	210TY			
	<b>HP</b>	<b>RPM</b>	<b>VOLTS</b>	<b>AMPS</b>	<b>HZ</b>	<b>S.F.</b>
	15	1765	230/460	38/19	6-60	1.00
	15	1765	230/460	38/19	60	1.00
<b>CONSTANT HP RPM</b>		@	<b>HZ</b>	<b>CODE</b>	H	
<b>TYPE</b>	P	<b>INSUL.CLASS</b>	F	<b>TORQUE</b>	10:1_VT	<b>DESIGN</b> B
<b>D.E. BRG.</b>	60BC02JPP30A	<b>ENCL</b>	TENV	<b>DUTY</b>	15MIN	<b>PH</b> 3
<b>O.D.E. BRG.</b>	30BC02JPG30A	<b>MOTOR WEIGHT</b>		<b>AMB</b>	40	
	FINAL CONN VOLTAGE = 230 *15					
	MIN IN AIR ;SUB. IN SEWAGE /					
	WATER ONLY					

---

**000613007RC**

---

<b>CLASS I GROUP</b>	C D X	<b>NO.</b>	
<b>CLASS II GROUP</b>	X X X		
<b>OPERATING TEMP CODE</b>	T3C		

---

---

**000692000MB**

---

SUITABLE FOR OPERATION ON PWM

INVERTER EQUIPPED WITH IGBT

DEVICES AND CAPABLE OF

CARRIER

FREQUENCY OF 2 KHZ MINIMUM

---

**000613007MS**

<b>CAT.NO.</b>	SUM71504	<b>SPEC NO.</b>	S21-CWS0-0300				
<b>SER.NO.</b>		<b>FRAME SIZE</b>	210TY				
	<b>HP</b>	<b>RPM</b>	<b>VOLTS</b>	<b>AMPS</b>	<b>HZ</b>	<b>S.F.</b>	
	15	1765	230/460	38/19	6-60	1.00	
	15	1765	230/460	38/19	60	1.00	
<b>CONSTANT HP RPM</b>		@	<b>HZ</b>	<b>CODE</b>	H		
<b>TYPE</b>	P	<b>INSUL.CLASS</b>	F	<b>TORQUE</b>	10:1_VT	<b>DESIGN</b>	B
<b>D.E. BRG.</b>	60BC02JPP30A	<b>ENCL</b>	TENV	<b>DUTY</b>	15MIN	<b>PH</b>	3
<b>O.D.E. BRG.</b>	30BC02JPG30A	<b>MOTOR WEIGHT</b>		<b>AMB</b>	40		
	FINAL CONN VOLTAGE = 230 *15						
	MIN IN AIR ;SUB. IN SEWAGE /						
	WATER ONLY						

**AC induction motor performance data**

Record #86078 - Typical performance - not guaranteed values

Winding	07WGA0018
Type	0746M
Enclosure	XPNV

**Nameplate data**

Rated Output			15
Volts			230/460
Full Load Amps			38/19
R.P.M.			1765
Hz	60	Phase	3
KVA Code			H
S.F.			1.15
NEMA Nom. Eff.	90.1	Power Factor	82
Duty			15 MIN
S.F. Amps			

460 V, 60 Hz:

**High Voltage Connection**

Full Load Torque	44.66 LB-FT
Start Configuration	direct on line
Breakdown Torque	115 LB-FT
Pull-up Torque	45 LB-FT
Locked-rotor Torque	63.2 LB-FT
Starting Current	121 A
No-load Current	7.16
Line-line Res. @ 25°C	0.904 Ω
Temp. Rise @ Rated Load	35°C
Temp. Rise @ S.F. Load	43°C
Locked-rotor Power Factor	37.5
Rotor inertia	1.13 lb-ft²

**Load Characteristics 460 V, 60 Hz, 15 HP**

% of Rated Load	NL	25	50	75	100	125	150	SF
Power Factor	5	47	69	78	82	84	84	83
Efficiency	0	88.9	91.4	91.9	90.9	89.9	88	90.3
Speed	1799	1792	1783	1775	1765	1754	1741	1758
Line amperes	7.16	8.37	11.13	14.65	18.74	23.33	28.59	21.5

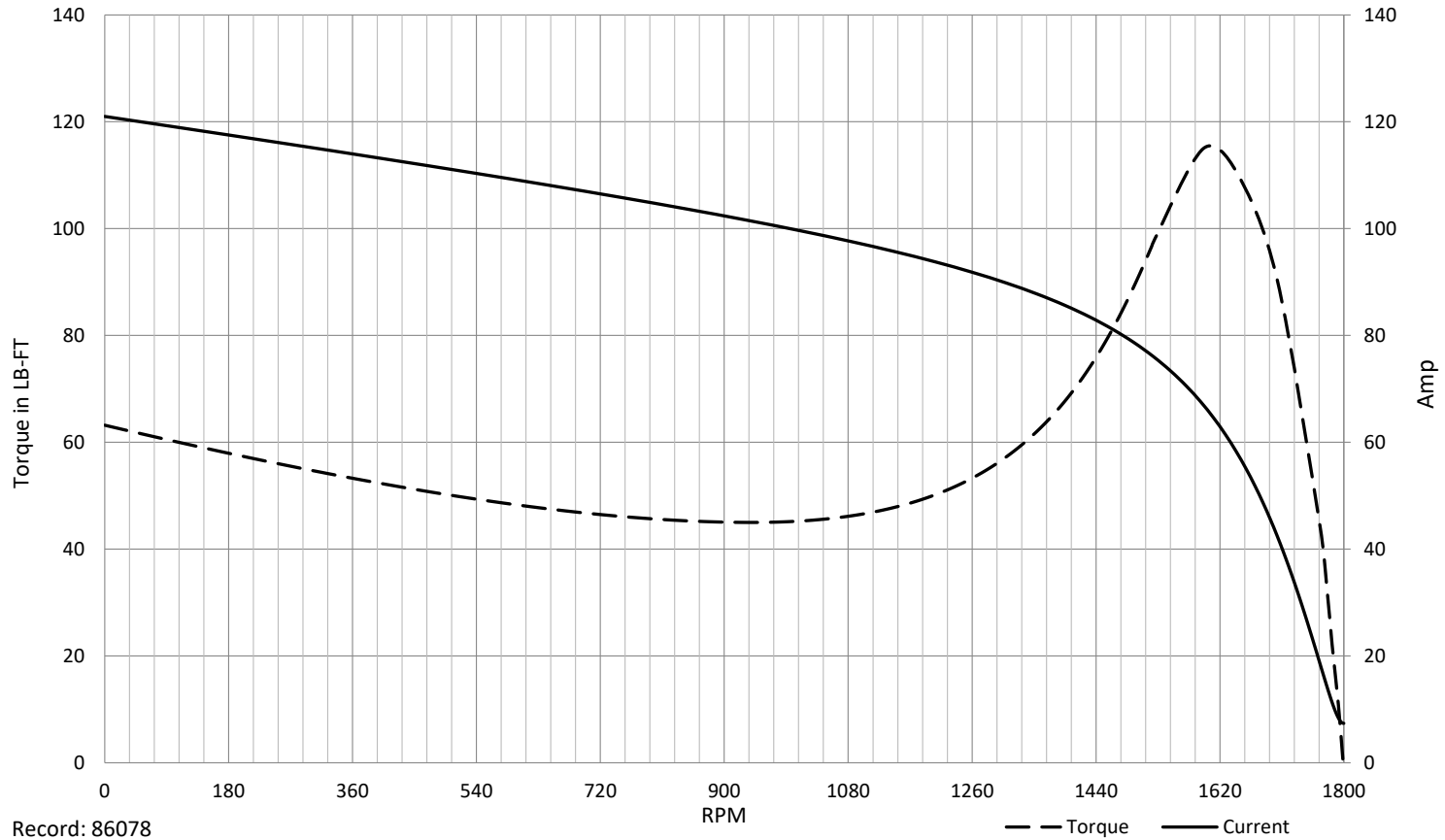


SPEED TORQUE / SPEED CURRENT CURVES

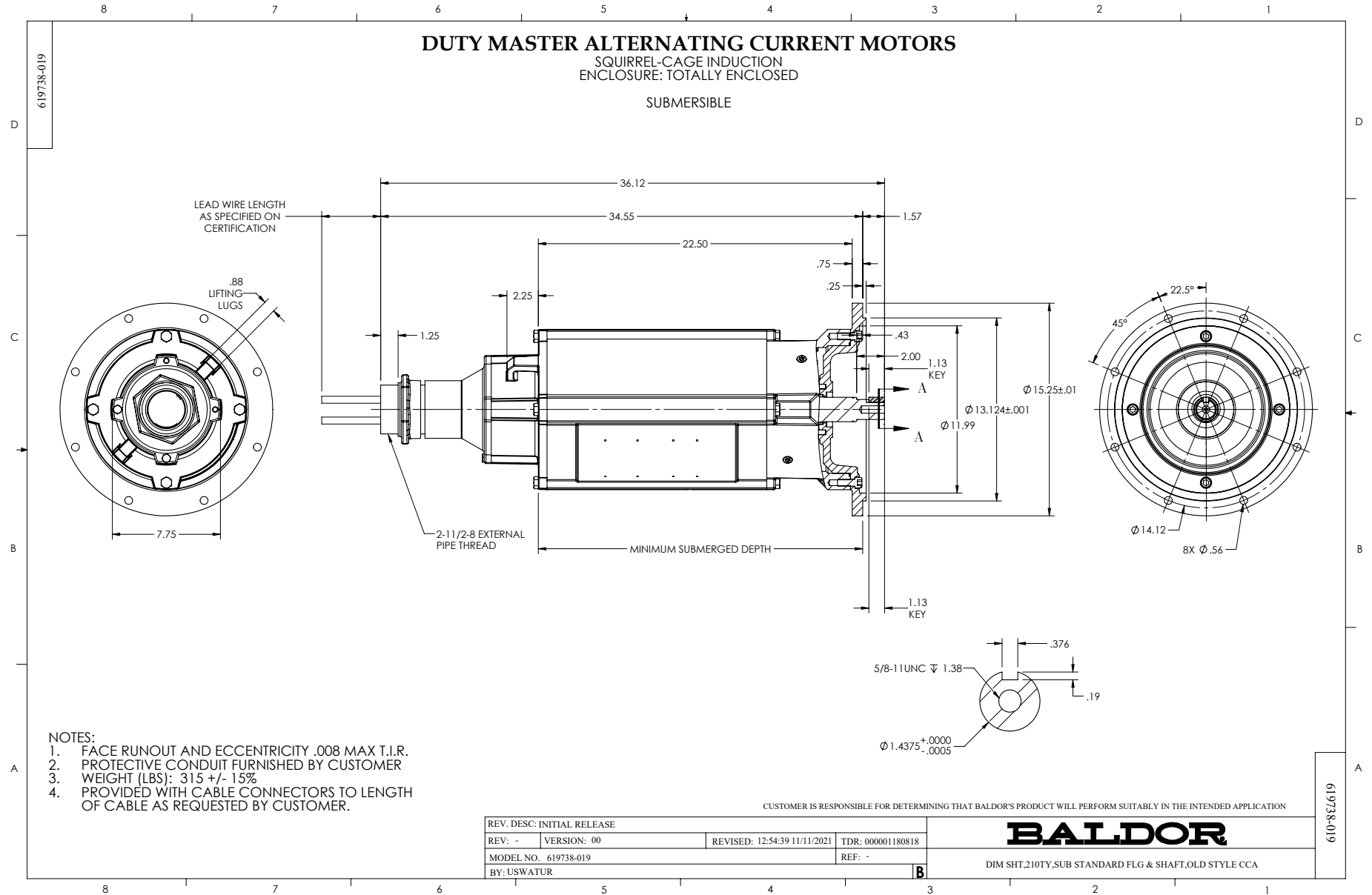


07WGA0018

15HP 460V 60HZ



Record: 86078



CD0005



LOW VOLTAGE  
(2Y)



LINE

HIGH VOLTAGE  
(1Y)



LINE

NOTES:

1. INTERCHANGE ANY TWO LINE LEADS TO REVERSE ROTATION.
2. OPTIONAL THERMOSTATS ARE PROVIDED WHEN SPECIFIED.
3. ACTUAL NUMBER OF INTERNAL PARALLEL CIRCUITS MAY BE A MULTIPLE OF THOSE SHOWN ABOVE.
4. LEAD COLORS ARE OPTIONAL. LEADS MUST ALWAYS BE NUMBERED AS SHOWN.

CD0005

REV. DESC: REVISE TO SHOW OPTIONAL COLORS			
REV. LTR: E	BY: JLP	REVISED: 01/19/99 10:15	TDR: 0171435
S00000		FILE: AAA00005140	MDL: -
		MTL: -	

BALDOR ELECTRIC Co.

3PH, DV, 9 LEADS