

ABB BALDOR RELIANCE III

Customer information packet

SUM71504-4

15HP, 1765RPM, 3PH, 60HZ, 210TY, XPNV, V1

Class - CLI GP C,D

Division - Not Applicable

Specifications

Enclosure	XPNV
Frame	210TY
Frame Material	Iron
Frequency	60.00 Hz
Haz Area Class and Group	CLI GP C,D
Haz Area Division	Not Applicable
Motor Letter Type	Three Phase
Phase	3
Agency Approvals	CCSA US
Base Indicator	Rigid
Bearing Grease Type	Polyrex EM (-20F +300F)
Cable Length	25 FOOT
Design Code	B
Drip Cover	No Drip Cover
Duty Rating	CONT
Haz Area Temp Code	T3C
Heater Indicator	No Heater
Insulation Class	F
Inverter Code	Not Inverter
IP Rating	IP68
KVA Code	H
Lifting Lugs	Standard Lifting Lugs
Motor Standards	NEMA
Motor Type	M
Mounting Arrangement	V1
Number of Poles	4
Product Family	Pump - Centrifugal
Pulley End Bearing Type	Ball
Pulley Face Code	Standard
Service Factor	1.15
Shaft Diameter	1.437 IN
Shaft Rotation	Reversible

Part Detail

Revision	B
Type	AC
Mech. spec.	
Base	
Status	PRD/A
Elec. spec.	86078
Layout	619738-019
Eff. date	12-10-2024
CD Diagram	
Poles	///
Leads	
Proprietary	False
Created date	07-12-2024

Shaft Slinger Indicator	No Slinger
Speed Code	Single Speed
Starting Method	Direct on line
Thermal Device - Winding	Normally Closed Thermostat

Nameplate

000613007MS

CAT.NO.	SUM71504-4	SPEC NO.	S21-CWS0-0301				
SER.NO.		FRAME SIZE	210TY				
	HP	RPM	VOLTS	AMPS	HZ	S.F.	
	15	1765	230/460	38/19	6-60	1.00	
	15	1765	230/460	38/19	60	1.15	
CONSTANT HP RPM		@	HZ	CODE	H		
TYPE	P	INSUL.CLASS	F	TORQUE	10:1_VT	DESIGN	B
D.E. BRG.	60BC02JPP30A	ENCL	TENV	DUTY	15MIN	PH	3
O.D.E. BRG.	30BC02JPG30A	MOTOR WEIGHT	425	AMB	40		
FINAL CONN VOLTAGE = 460 *15							
MIN IN AIR ;SUB. IN SEWAGE /							
WATER ONLY							

000613007RC

CLASS I GROUP	C D X	NO.	
CLASS II GROUP	X X X		
OPERATING TEMP CODE	T3C		

000692000MB

SUITABLE FOR OPERATION ON PWM
INVERTER EQUIPPED WITH IGBT
DEVICES AND CAPABLE OF
CARRIER
FREQUENCY OF 2 KHZ MINIMUM

000613007MS

CAT.NO.	SUM71504-4	SPEC NO.	S21-CWS0-0301			
SER.NO.		FRAME SIZE	210TY			
	HP	RPM	VOLTS	AMPS	HZ	S.F.
	15	1765	230/460	38/19	6-60	1.00
	15	1765	230/460	38/19	60	1.15
CONSTANT HP RPM		@	HZ	CODE	H	
TYPE	P	INSUL.CLASS	F	TORQUE	10:1_VT	DESIGN B
D.E. BRG.	60BC02JPP30A	ENCL	TENV	DUTY	15MIN	PH 3
O.D.E. BRG.	30BC02JPG30A	MOTOR WEIGHT	425	AMB	40	
	FINAL CONN VOLTAGE = 460 *15					
	MIN IN AIR ;SUB. IN SEWAGE /					
	WATER ONLY					

AC Induction Motor performance data

Record #86078 - Typical performance - not guaranteed values

Winding	07WGA0018
Type	0746M
Enclosure	XPNV

Nameplate data

Rated Output			15
Volts			230/460
Full Load Amps			38/19
R.P.M.			1765
Hz	60	Phase	3
KVA Code			H
S.F.			1.15
NEMA Nom. Eff.	90.1	Power Factor	82
Duty			15 MIN
S.F. Amps			

460 V, 60 Hz:

High Voltage Connection

Full Load Torque	44.66 LB-FT
Start Configuration	direct on line
Breakdown Torque	115 LB-FT
Pull-up Torque	45 LB-FT
Locked-rotor Torque	63.2 LB-FT
Starting Current	121 A
No-load Current	7.16
Line-line Res. @ 25°C	0.904 Ω
Temp. Rise @ Rated Load	35°C
Temp. Rise @ S.F. Load	43°C
Locked-rotor Power Factor	37.5
Rotor inertia	1.13 lb-ft ²

Load Characteristics 460 V, 60 Hz, 15 HP

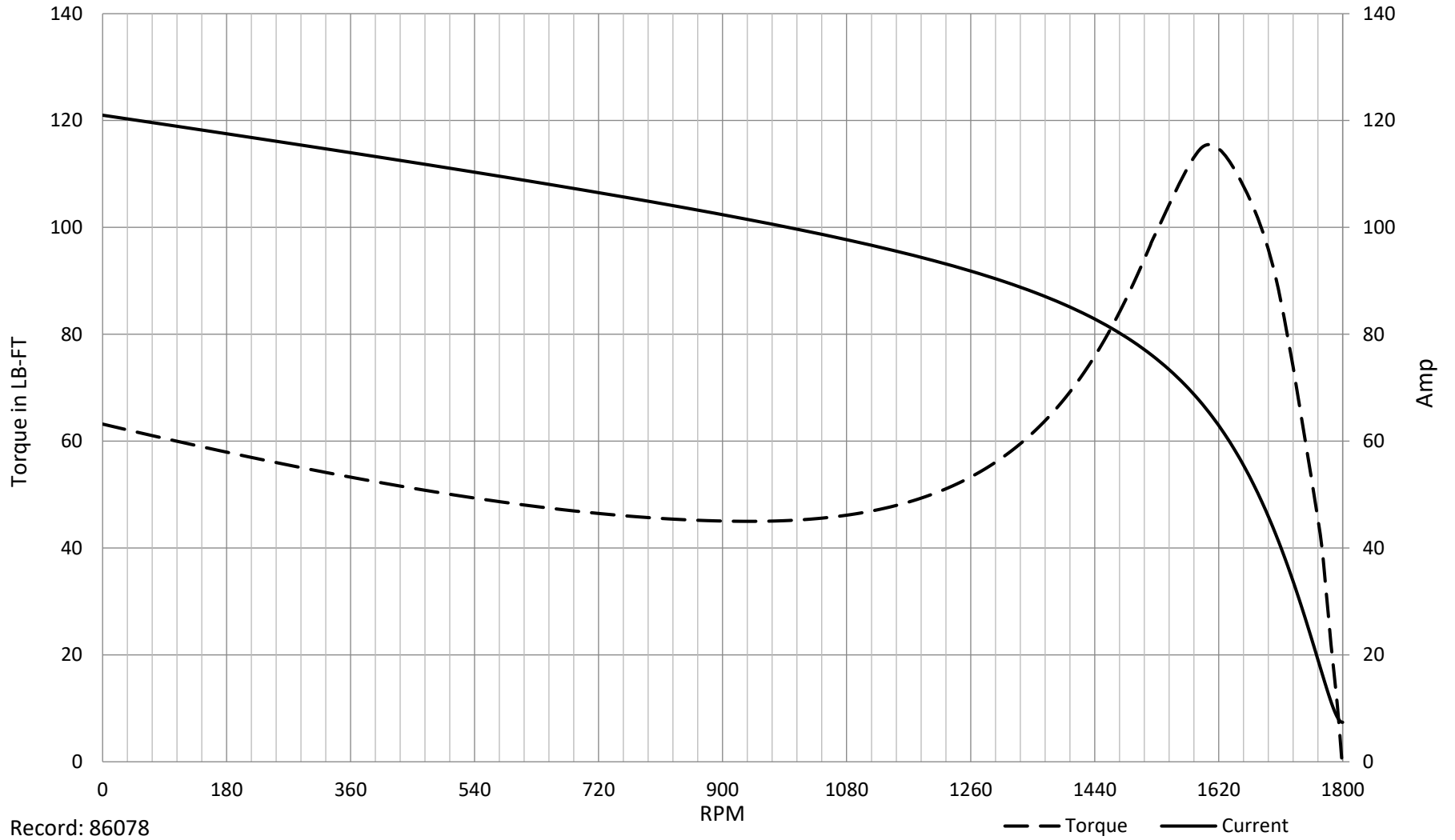
% of Rated Load	NL	25	50	75	100	125	150	SF
Power Factor	5	47	69	78	82	84	84	83
Efficiency	0	88.9	91.4	91.9	90.9	89.9	88	90.3
Speed	1799	1792	1783	1775	1765	1754	1741	1758
Line amperes	7.16	8.37	11.13	14.65	18.74	23.33	28.59	21.5

SPEED TORQUE / SPEED CURRENT CURVES

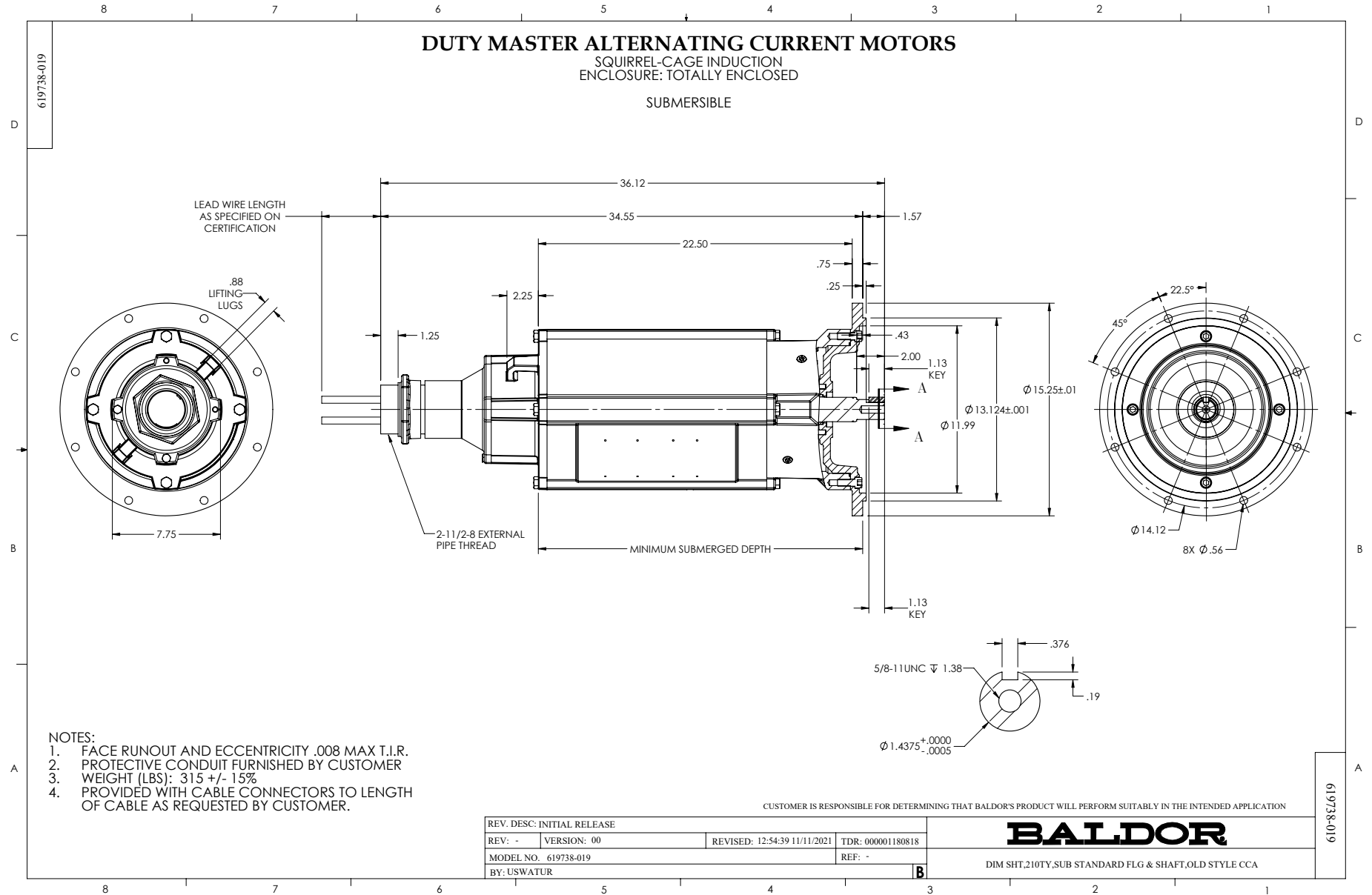


07WGA0018

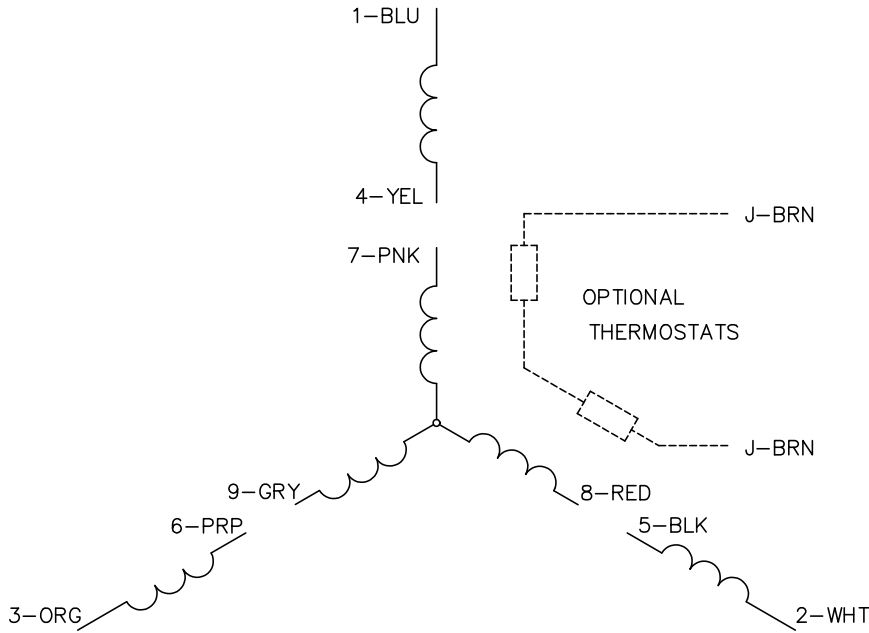
15HP 460V 60HZ



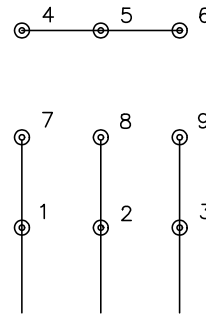
Record: 86078



CD0005

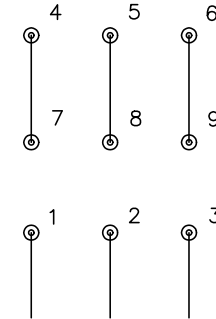


LOW VOLTAGE
(2Y)



LINE

HIGH VOLTAGE
(1Y)



LINE

NOTES:

1. INTERCHANGE ANY TWO LINE LEADS TO REVERSE ROTATION.
2. OPTIONAL THERMOSTATS ARE PROVIDED WHEN SPECIFIED.
3. ACTUAL NUMBER OF INTERNAL PARALLEL CIRCUITS MAY BE A MULTIPLE OF THOSE SHOWN ABOVE.
4. LEAD COLORS ARE OPTIONAL. LEADS MUST ALWAYS BE NUMBERED AS SHOWN.

CD0005

REV. DESC: REVISE TO SHOW OPTIONAL COLORS

REV. LTR: E BY: JLP REVISED: 01/19/99 10:15 TDR: 0171435

500000

FILE: AAA00005140

MDL: -

MTL: -

BALDOR ELECTRIC Co.

3PH, DV, 9 LEADS