

BALDOR • RELIANCE

Customer information packet

SUM71006

10HP, 1140RPM, 3PH, 60HZ, 210TY, XPNV, V1

Class - CLI GP C,D

Division - Not Applicable

Specifications

Enclosure	XPNV
Frame	210TY
Frame Material	Iron
Frequency	60.00 Hz
Haz Area Class and Group	CLI GP C,D
Haz Area Division	Not Applicable
Motor Letter Type	Three Phase
Phase	3
Agency Approvals	CCSA US
Base Indicator	Rigid
Bearing Grease Type	Polyrex EM (-20F +300F)
Cable Length	NO CABLE
Design Code	B
Drip Cover	No Drip Cover
Duty Rating	CONT
Haz Area Temp Code	T3C
Heater Indicator	No Heater
Insulation Class	F
Inverter Code	Not Inverter
IP Rating	NONE
KVA Code	G
Lifting Lugs	Standard Lifting Lugs
Motor Standards	NEMA
Motor Type	M
Mounting Arrangement	V1
Number of Poles	6
Product Family	Pump - Centrifugal
Pulley End Bearing Type	Ball
Pulley Face Code	Standard
Service Factor	1.15
Shaft Diameter	1.437 IN
Shaft Rotation	Reversible

Part detail

Revision	C
Type	AC
Mech. spec.	
Base	
Status	PRD/A
Elec. spec.	85964
Layout	619738-003
Eff. date	11-12-2024
CD Diagram	416820-001
Poles	///
Leads	
Proprietary	False
Created date	08-10-2021

Shaft Slinger Indicator	No Slinger
Speed Code	Single Speed
Starting Method	Direct on line
Thermal Device - Winding	Normally Closed Thermostat

Nameplate

000613007MS

CAT.NO.	SUM71006	SPEC NO.	S21-CWS0-0011			
SER.NO.		FRAME SIZE	210TY			
	HP	RPM	VOLTS	AMPS	HZ	S.F.
	10	1140	230/460	28/14	6-60	1.00
	10	1140	230/460	28/14	60	1.00
CONSTANT HP RPM		@	HZ	CODE	G	
TYPE	P	INSUL.CLASS	F	TORQUE	10:1_VT	DESIGN B
D.E. BRG.	60BC02JPP30A	ENCL	TENV	DUTY	15MIN	PH 3
O.D.E. BRG.	30BC02JPG30A	MOTOR WEIGHT		AMB	40	
	FINAL CONN VOLTAGE = 230 *15					
	MIN IN AIR ;SUB. IN WATER					
	ONLY					

000613007RC

CLASS I GROUP	C D X	NO.	
CLASS II GROUP	X X X		
OPERATING TEMP CODE	T3C		

000692000MB

SUITABLE FOR OPERATION ON PWM
INVERTER EQUIPPED WITH IGBT
DEVICES AND CAPABLE OF
CARRIER
FREQUENCY OF 2 KHZ MINIMUM

000613007MS

CAT.NO.	SUM71006	SPEC NO.	S21-CWS0-0011			
SER.NO.		FRAME SIZE	210TY			
	HP	RPM	VOLTS	AMPS	HZ	S.F.
	10	1140	230/460	28/14	6-60	1.00
	10	1140	230/460	28/14	60	1.00
CONSTANT HP RPM		@	HZ	CODE	G	
TYPE	P	INSUL.CLASS	F	TORQUE	10:1_VT	DESIGN B
D.E. BRG.	60BC02JPP30A		ENCL	TENV	DUTY	15MIN PH 3
O.D.E. BRG.	30BC02JPG30A		MOTOR WEIGHT		AMB	40
	FINAL CONN VOLTAGE = 230 *15					
	MIN IN AIR ;SUB. IN WATER					
	ONLY					

AC induction motor performance data

Record #85964 - Typical performance - not guaranteed values

Winding	07WGA0020
Type	0754M
Enclosure	PART

Nameplate data

Rated Output			10
Volts			230/460
Full Load Amps			28/14
R.P.M.			1140
Hz	60	Phase	3
KVA Code			G
S.F.			1.15
NEMA Nom. Eff.	88.5	Power Factor	72
Duty			15 MIN
S.F. Amps			

**460 V, 60 Hz:
High Voltage Connection**

Full Load Torque	45.75 LB-FT
Start Configuration	direct on line
Breakdown Torque	100 LB-FT
Pull-up Torque	76.65 LB-FT
Locked-rotor Torque	93.02 LB-FT
Starting Current	71.29 A
No-load Current	5.64
Line-line Res. @ 25°C	1.12 Ω
Temp. Rise @ Rated Load	80°C
Temp. Rise @ S.F. Load	106°C
Locked-rotor Power Factor	22.1
Rotor inertia	1.34 lb-ft²

Load Characteristics 460 V, 60 Hz, 10 HP

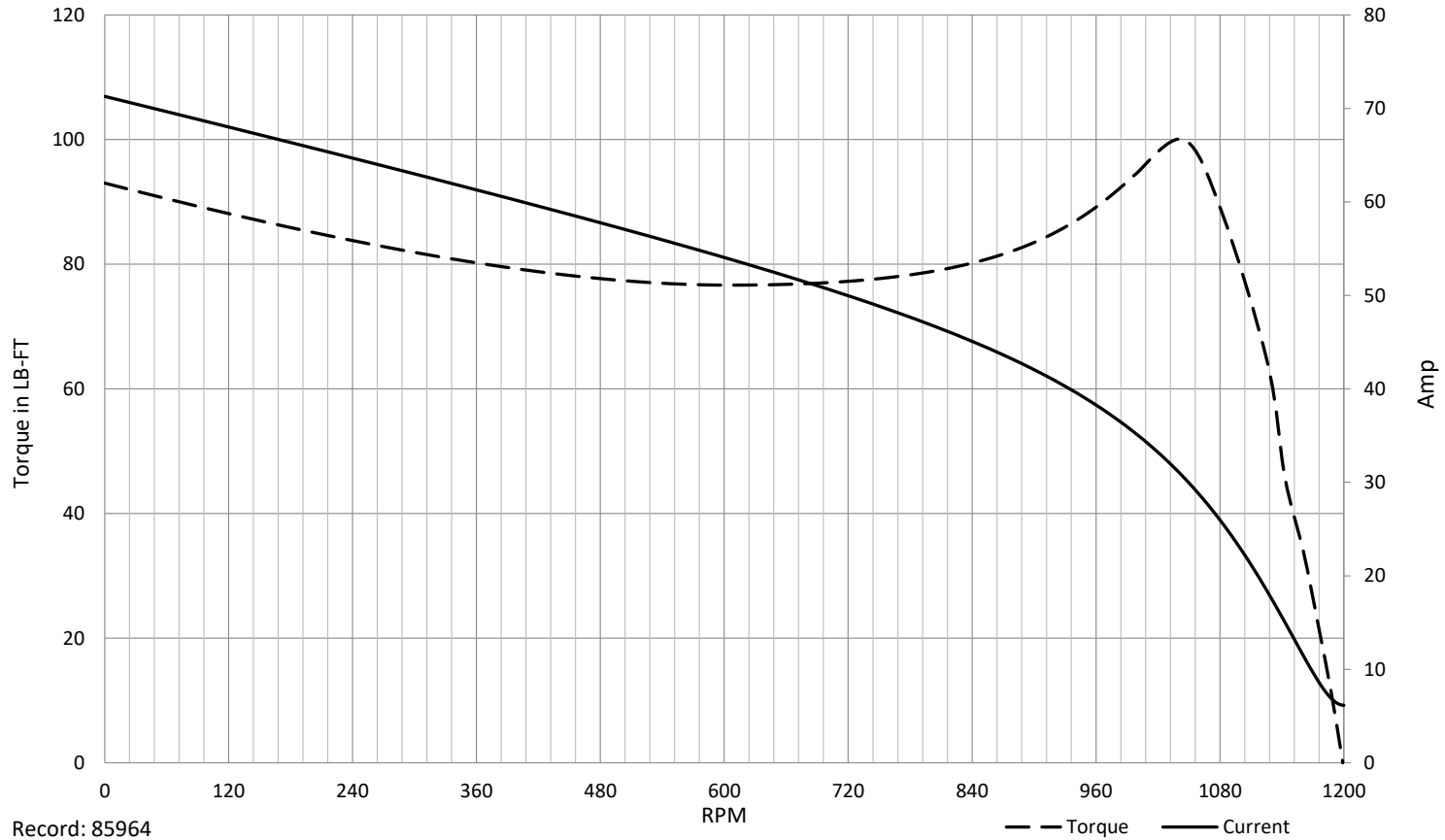
% of Rated Load	NL	25	50	75	100	125	150	SF
Power Factor	4	41	62	71	74	74	67	74
Efficiency	0	87	90.3	90.2	89	86.7	80.6	87.6
Speed	1199	1188	1175	1161	1143	1120	1065	1129
Line amperes	5.64	6.32	8.23	10.98	14.28	18.53	26.83	16.8

SPEED TORQUE / SPEED CURRENT CURVES

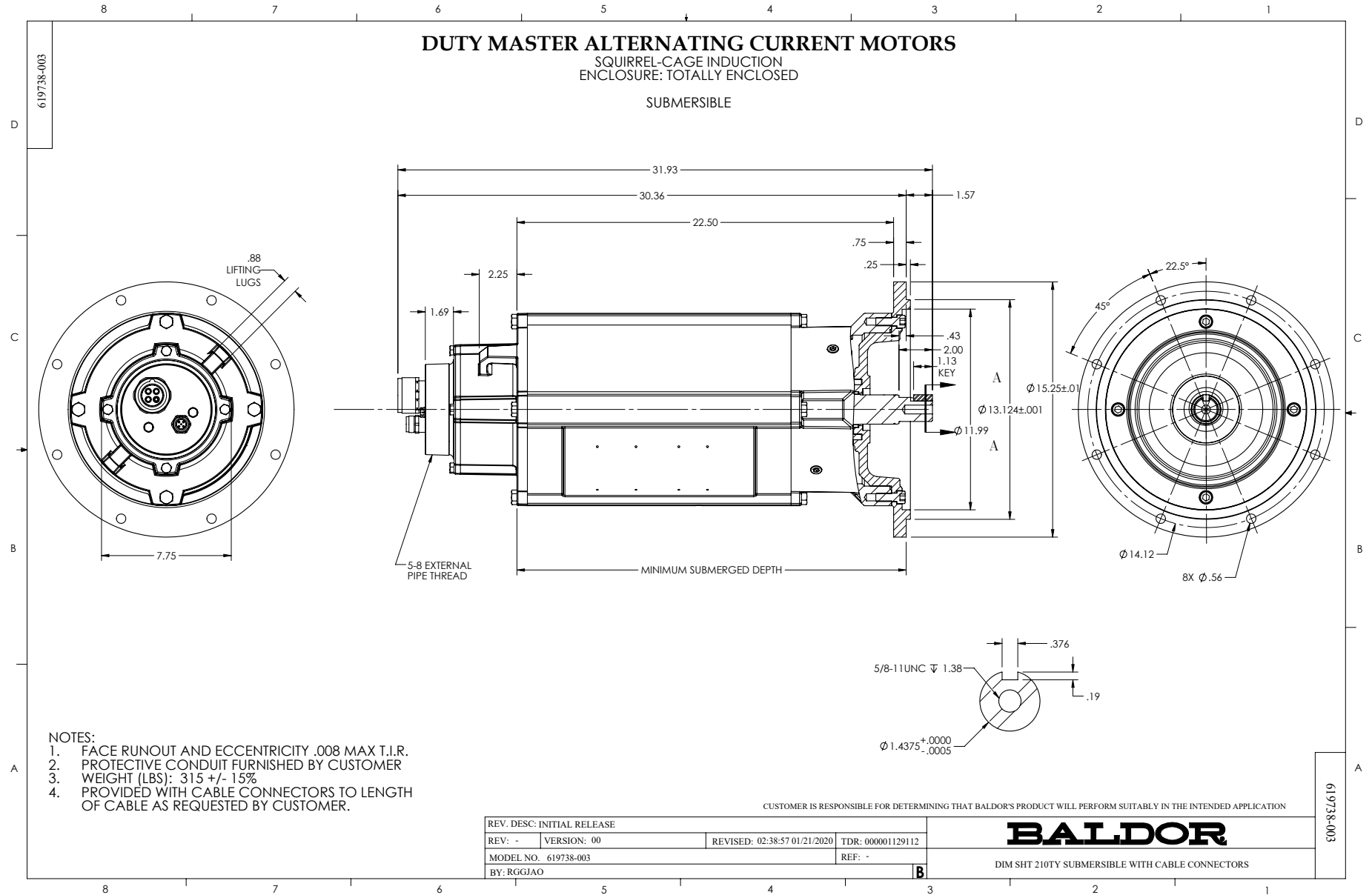


07WGA0020

10HP 460V 60HZ

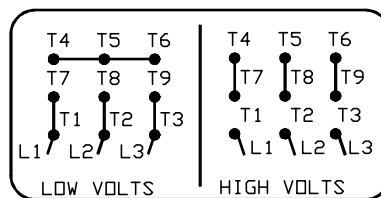
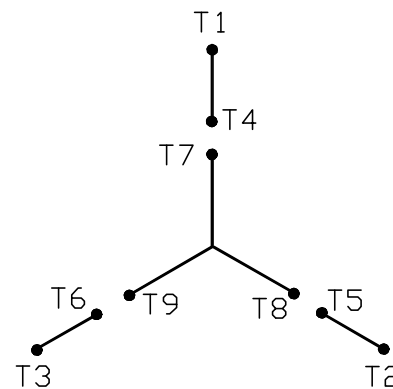


Record: 85964



416820-001

A-C MOTOR
 CONNECTION DIAGRAM
 STANDARD 9 LEAD Y CONNECTED



(N. P. 1575-A)

416820-001

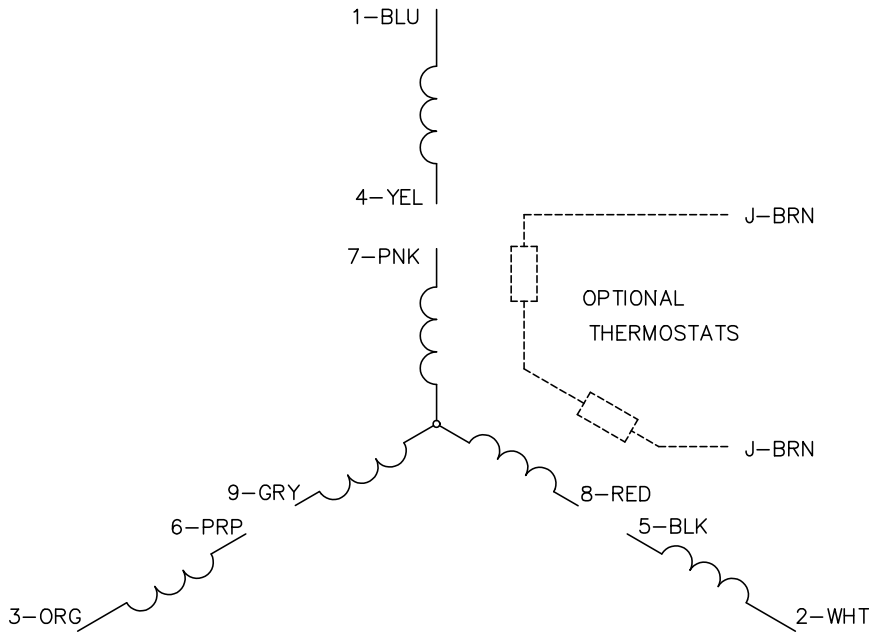
REV. DESC: FONT CHANGE FOR PDF SEARCHABLE		
REV. LTR: A	VERSION: 01	TDR: 000001009382
FILE: \MGA\00000\659	REVISED: 10: 33: 07 12/21/2016	BY: MGHMTT
MTL: -	© □	

BALDOR

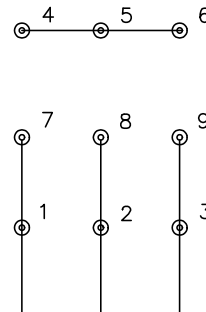
CONN DIAG - STANDARD 9 LEAD, Y CONNECTED

SH 1 of 1

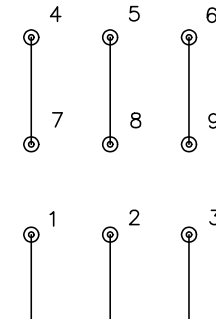
CD0005



LOW VOLTAGE
(2Y)



HIGH VOLTAGE
(1Y)



NOTES:

1. INTERCHANGE ANY TWO LINE LEADS TO REVERSE ROTATION.
2. OPTIONAL THERMOSTATS ARE PROVIDED WHEN SPECIFIED.
3. ACTUAL NUMBER OF INTERNAL PARALLEL CIRCUITS MAY BE A MULTIPLE OF THOSE SHOWN ABOVE.
4. LEAD COLORS ARE OPTIONAL. LEADS MUST ALWAYS BE NUMBERED AS SHOWN.

CD0005

REV. DESC: REVISE TO SHOW OPTIONAL COLORS			
REV. LTR: E	BY: JLP	REVISED: 01/19/99 10:15	TDR: 0171435
S00000		FILE: AAA00005140	MDL: -
		MTL: -	

BALDOR ELECTRIC Co.

3PH, DV, 9 LEADS