



Customer information packet

SUM71004-4

10HP, 1765RPM, 3PH, 60HZ, 210TY, XPNV, V1
Class - CLI GP C,D
Division - Not Applicable

Specifications

Enclosure	XPNV
Frame	210TY
Frame Material	Iron
Frequency	60.00 Hz
Haz Area Class and Group	CLI GP C,D
Haz Area Division	Not Applicable
Motor Letter Type	Three Phase
Phase	3
Agency Approvals	CCSA US
Base Indicator	Rigid
Bearing Grease Type	Polyrex EM (-20F +300F)
Cable Length	NO CABLE
Design Code	B
Drip Cover	No Drip Cover
Duty Rating	CONT
Haz Area Temp Code	T3C
Heater Indicator	No Heater
Insulation Class	F
Inverter Code	Not Inverter
IP Rating	NONE
KVA Code	H
Lifting Lugs	Standard Lifting Lugs
Motor Standards	NEMA
Motor Type	M
Mounting Arrangement	V1
Number of Poles	4
Product Family	Pump - Centrifugal
Pulley End Bearing Type	Ball
Pulley Face Code	Standard
Service Factor	1.15
Shaft Diameter	1.437 IN
Shaft Rotation	Reversible

Part detail

Revision	A
Type	AC
Mech. spec.	
Base	
Status	PRD/A
Elec. spec.	86077
Layout	619738-003
Eff. date	09-15-2021
CD Diagram	416820-001
Poles	///
Leads	
Proprietary	False
Created date	08-10-2021

Shaft Slinger Indicator	No Slinger
Speed Code	Single Speed
Starting Method	Direct on line
Thermal Device - Winding	Normally Closed Thermostat

Nameplate

000613007MN

CAT NO	SUM71004-4	SPEC NO.	S21-CWS0-0009						
HP	10	AMPS	25/12.5	VOLTS	230/460	DESIGN	B		
FRAME SIZE	210TY	RPM	1765	HZ	60	AMB	40	SF	1.15
D.E. BRG.	60BC02JPP30A	PH	3	DUTY	15MIN	INSUL	F		
O.D.E. BRG.	30BC02JPG30A	TYPE	P	ENCL	TENV	CODE	H		
		POWER FACTOR		NEMA-NOM-EFF					
		MAX CORR KVAR		GUARANTEED EFFICIENCY					
		NEMA NOM/CSA QUOTED EFF @		100% LOAD					
SER.NO.		MOTOR WEIGHT	356	LBS.					
	FINAL CONN VOLTAGE = 460								
	*15MIN IN AIR ;SUB. IN WATER								
	ONLY								

000613007RC

CLASS I GROUP	C D X	NO.	
CLASS II GROUP	X X X		
OPERATING TEMP CODE	T3C		

000613007MR

CAT NO	SUM71004-4	SPEC NO.	S21-CWS0-0009						
HP	10	AMPS	25/12.5	VOLTS	230/460	DESIGN	B		
FRAME SIZE	210TY	RPM	1765	HZ	60	AMB	40	SF	1.15
D.E. BRG.	60BC02JPP30A	PH	3	DUTY	15MIN	INSUL	F		
O.D.E. BRG.	30BC02JPG30A	TYPE	P	ENCL	TENV	CODE	H		
		POWER FACTOR		NEMA-NOM-EFF					
		MAX CORR KVAR		GUARANTEED EFFICIENCY					
		NEMA NOM/CSA QUOTED EFF @		100% LOAD					
SER.NO.		MOTOR WEIGHT	356	LBS.					
	FINAL CONN VOLTAGE = 460								
	*15MIN IN AIR ;SUB. IN WATER								
	ONLY								

AC induction motor performance data

Record #86077 - Typical performance - not guaranteed values

Winding	07WGA0017
Type	0738M
Enclosure	TENV

Nameplate data

Rated Output			10
Volts			230/460
Full Load Amps			25/12.5
R.P.M.			1765
Hz	60	Phase	3
KVA Code			H
S.F.			1.15
NEMA Nom. Eff.	90.2	Power Factor	82
Duty			15 MIN
S.F. Amps			

460 V, 60 Hz:

High Voltage Connection

Full Load Torque	29.74 LB-FT
Start Configuration	direct on line
Breakdown Torque	83.88 LB-FT
Pull-up Torque	29.9 LB-FT
Locked-rotor Torque	45.11 LB-FT
Starting Current	87.77 A
No-load Current	4.92
Line-line Res. @ 25°C	1.25 Ω
Temp. Rise @ Rated Load	15°C
Temp. Rise @ S.F. Load	18°C
Locked-rotor Power Factor	37.1
Rotor inertia	0.934 lb-ft²

Load Characteristics 460 V, 60 Hz, 10 HP

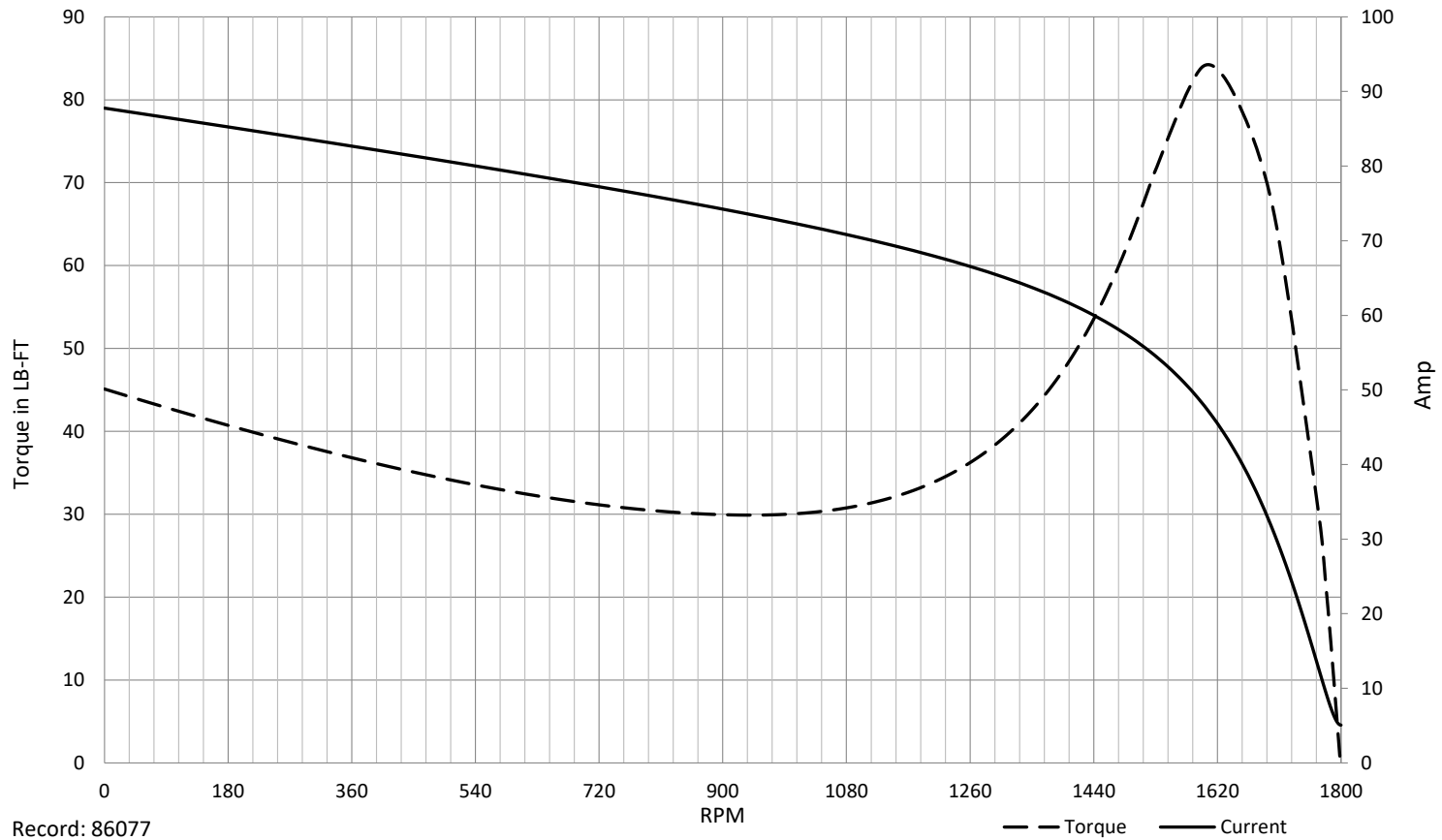
% of Rated Load	NL	25	50	75	100	125	150	SF
Power Factor	6	47	68	78	82	84	84	83
Efficiency	0	88.1	90.8	91.9	90.9	90	88.6	90.4
Speed	1799	1792	1785	1777	1768	1758	1747	1762
Line amperes	4.92	5.73	7.53	9.86	12.49	15.44	18.79	14.3

SPEED TORQUE / SPEED CURRENT CURVES

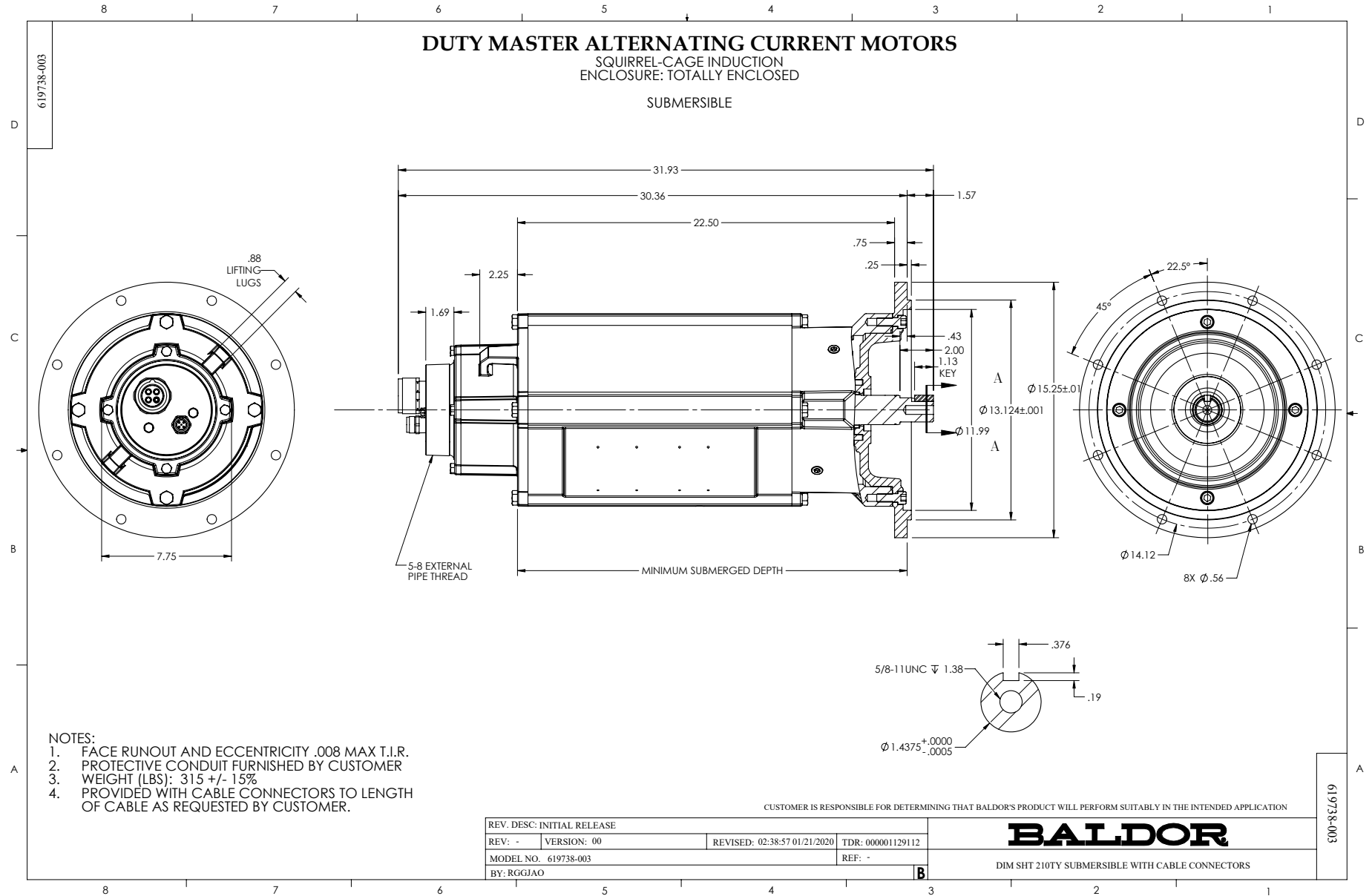


07WGA0017

10HP 460V 60HZ

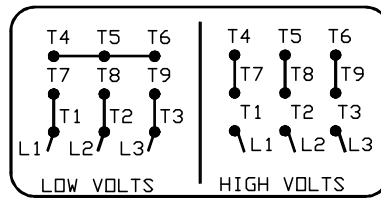
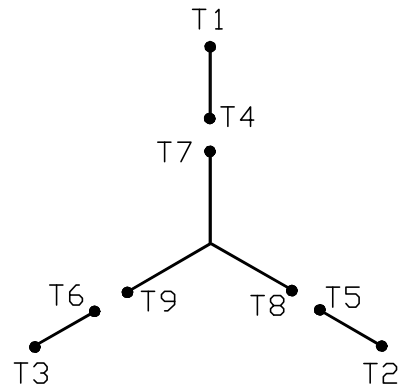


Record: 86077



416820-001

A-C MOTOR
 CONNECTION DIAGRAM
 STANDARD 9 LEAD Y CONNECTED



(N. P. 1575-A)

416820-001

REV. DESC: FONT CHANGE FOR PDF SEARCHABLE		
REV. LTR: A	VERSION: 01	TDR: 000001009382
FILE: \MGA\00000\659	REVISED: 10: 33: 07 12/21/2016	BY: MGHMTT
MTL: -	© □	

BALDOR

CONN DIAG - STANDARD 9 LEAD, Y CONNECTED

SH 1 of 1

CD0005



LOW VOLTAGE (2Y)



LINE

HIGH VOLTAGE (1Y)



LINE

NOTES:

1. INTERCHANGE ANY TWO LINE LEADS TO REVERSE ROTATION.
2. OPTIONAL THERMOSTATS ARE PROVIDED WHEN SPECIFIED.
3. ACTUAL NUMBER OF INTERNAL PARALLEL CIRCUITS MAY BE A MULTIPLE OF THOSE SHOWN ABOVE.
4. LEAD COLORS ARE OPTIONAL. LEADS MUST ALWAYS BE NUMBERED AS SHOWN.

CD0005

REV. DESC: REVISE TO SHOW OPTIONAL COLORS			
REV. LTR: E	BY: JLP	REVISED: 01/19/99 10:15	TDR: 0171435
S00000		FILE: AAA00005140	MDL: -
		MTL: -	

BALDOR ELECTRIC Co.

3PH, DV, 9 LEADS