

ABB BALDOR RELIANCE III

Customer information packet

SUM710006-4

100HP, 1165RPM, 3PH, 60HZ, 360TY, TENV, FOOTL

Class - None

Division - Not Applicable

Specifications

Enclosure	XPNV
Frame	360TY
Frame Material	Iron
Frequency	60.00 Hz
Haz Area Class and Group	None
Haz Area Division	Not Applicable
Motor Letter Type	Three Phase
Output @ Frequency	100.000 @ 60 HZ
Phase	3
Voltage @ Frequency	460 V @ 60 HZ
Agency Approvals	CCSA US UL CULUS CSA
Base Indicator	Rigid
Bearing Grease Type	Polyrex EM (-20F +300F)
Cable Length	25 FOOT
Current @ Voltage	122 A @ 460 V
Design Code	B
Drip Cover	No Drip Cover
Duty Rating	15 MIN
Haz Area Temp Code	T3C
Heater Indicator	No Heater
Insulation Class	F
Inverter Code	Not Inverter
IP Rating	IP68
KVA Code	G
Lifting Lugs	Standard Lifting Lugs
Motor Standards	NEMA
Motor Type	M
Mounting Arrangement	V1
Number of Poles	6

Part Detail

Revision	C
Type	AC
Mech. spec.	
Base	
Status	PRD/A
Elec. spec.	W00971A A 001
Layout	066930-060
Eff. date	12-10-2024
CD Diagram	416820-036
Poles	06
Leads	
Proprietary	False
Created date	04-09-2015

Overall Length	47.10 IN
Product Family	Other
Pulley End Bearing Type	Ball
Pulley Face Code	Standard
Service Factor	1.15
Shaft Diameter	2.499 IN
Shaft Rotation	Reversible
Shaft Slinger Indicator	No Slinger
Speed Code	Single Speed
Starting Method	Direct on line
Thermal Device - Winding	None

Nameplate

000613007RC		
CLASS I GROUP	C D X	NO.
CLASS II GROUP	X X X	
OPERATING TEMP CODE	T3C	

000692000MB

SUITABLE FOR OPERATION ON PWM
INVERTER EQUIPPED WITH IGBT
DEVICES AND CAPABLE OF
CARRIER
FREQUENCY OF 2 KHZ MINIMUM

000613007MS

CAT.NO.	SUM710006-4	SPEC NO.	P36G2702			
SER.NO.		FRAME SIZE	X0360TY			
	HP	RPM	VOLTS	AMPS	HZ	S.F.
	100	1165	460	122.	6-60	1.00
	100	1165	460	122.	60	1.15
CONSTANT HP RPM		@	HZ	CODE	G	
TYPE	P	INSUL.CLASS	F	TORQUE	10:1_VT	DESIGN B
D.E. BRG.	90BJ33J30X	ENCL	TENV	DUTY	15MIN	PH 3
O.D.E. BRG.	50BC03JG30X	MOTOR WEIGHT		AMB	40	
	*15 MIN IN AIR ;SUB. IN					
	SEWAGE / WATER ONLY					
	P36G2702G					

000613007MS

CAT.NO.	SUM710006-4	SPEC NO.	P36G2702			
SER.NO.		FRAME SIZE	X0360TY			
	HP	RPM	VOLTS	AMPS	HZ	S.F.
	100	1165	460	122.	6-60	1.00
	100	1165	460	122.	60	1.15
CONSTANT HP RPM		@	HZ	CODE	G	
TYPE	P	INSUL.CLASS	F	TORQUE	10:1_VT	DESIGN B
D.E. BRG.	90BJ33J30X	ENCL	TENV	DUTY	15MIN	PH 3
O.D.E. BRG.	50BC03JG30X	MOTOR WEIGHT		AMB	40	
	*15 MIN IN AIR ;SUB. IN					
	SEWAGE / WATER ONLY					
	P36G2702G					

REL. S.O.	FRAME	HP	TYPE	PHASE/ HERTZ	RPM	VOLTS
	360TY	100	P	3/60	1165	230
AMPS	DUTY	AMB °C/ INSUL.	S.F.	NEMA DESIGN	CODE LETTER	ENCL.
244	*	40/F	1.15	B	G	SUB
E/S	ROTOR	TEST S.O.	TEST DATE	STATOR RES. @25 °C OHMS (BETWEEN LINES)		
-	418141-70-AE	---	---	.0219		

PERFORMANCE

LOAD	HP	AMPERES	RPM	INPUT KW	% POWER FACTOR	% EFFI- CIENCY
NO LOAD	0	74.9	1200	2.20	7.38	0
1/4	25.1	95.8	1192	21.2	55.5	88.2
2/4	50.0	134	1184	40.7	76.0	91.7
3/4	75.0	185	1175	60.8	82.4	92.0
4/4	100	244	1166	81.8	84.2	91.2
5/4	125	307	1155	104	84.7	89.9

SPEED TORQUE

	RPM	TORQUE % FULL LOAD	TORQUE LB.-FT.	AMPERES
LOCKED ROTOR	0	162	731	1406
PULL UP	240	145	655	1376
BREAKDOWN	1063	254	1143	808
FULL LOAD	1166	100	451	244

AMPERES SHOWN FOR 230. VOLT CONNECTION. IF OTHER VOLTAGE CONNECTIONS ARE AVAILABLE, THE AMPERES WILL VARY INVERSELY WITH THE RATED VOLTAGE

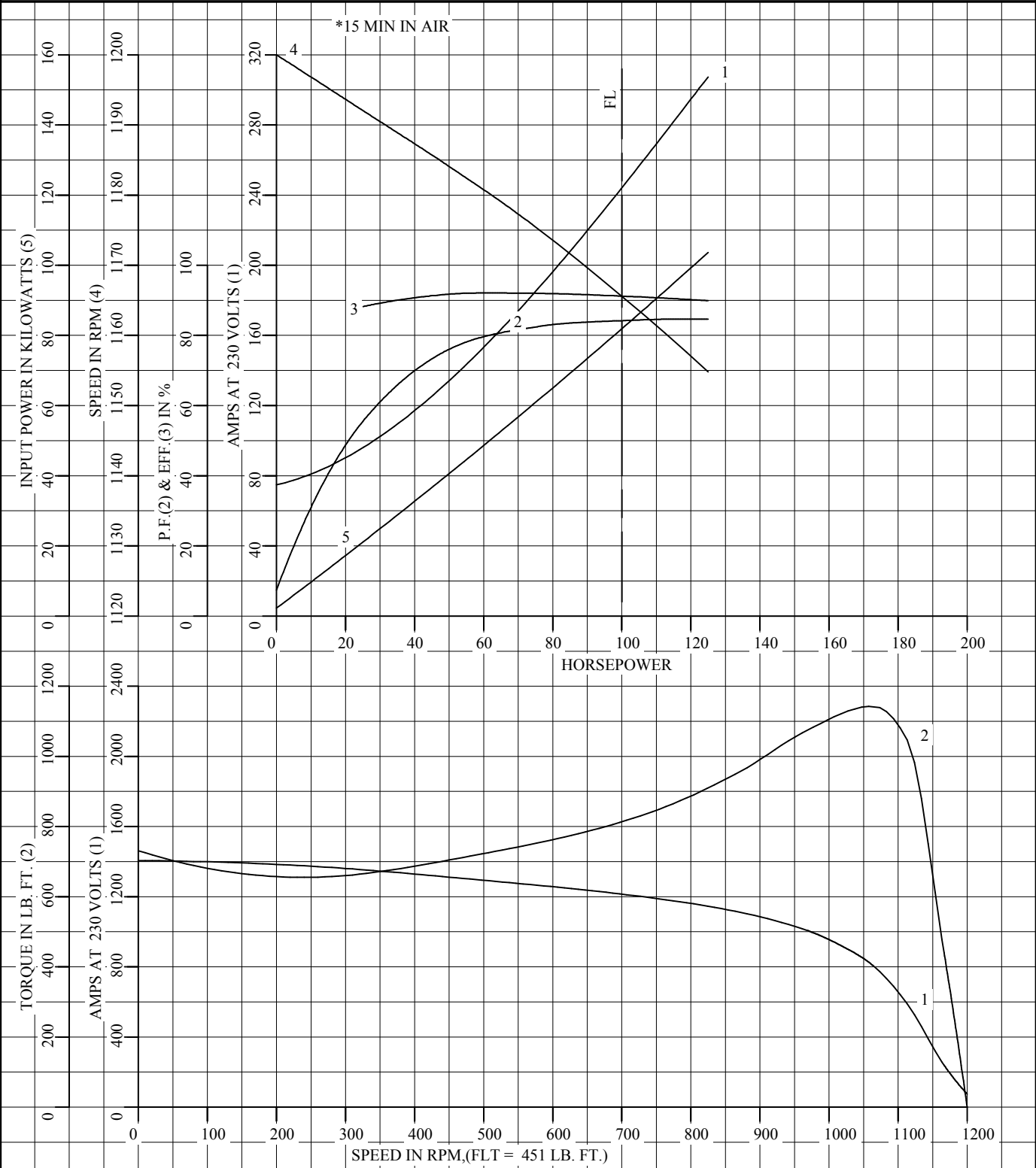
REMARKS: CALCULATED DATA
*15 MIN IN AIR



DR. BY P.B. GREENE
CK. BY W.L. SMITH
APP. BY W.L. SMITH
DATE 01/29/01

**A-C MOTOR
PERFORMANCE W00971-A-A001
DATA** ISSUE DATE 01/29/01

REL S.O.	RPM 1165	S.F. 1.15	ROTOR 418141-70-AE
FRAME 360TY	VOLTS 230	NEMA DESIGN B	TEST S.O. CALCULATED DATA
HP 100	AMPS 244	CODE LETTER G	TEST DATE ---
TYPE P	DUTY *	ENCLOSURE SUB	STATOR RES. @ 25 °C .0219
PHASE/HERTZ 3/60	AMB °C/INSUL 40/F	E/S -	OHMS (BETWEEN LINES)



AMPERES SHOWN FOR 230 VOLT CONNECTION, IF OTHER VOLTAGE CONNECTIONS ARE AVAILABLE, THE AMPERES WILL VARY INVERSELY WITH THE RATED VOLTAGE.



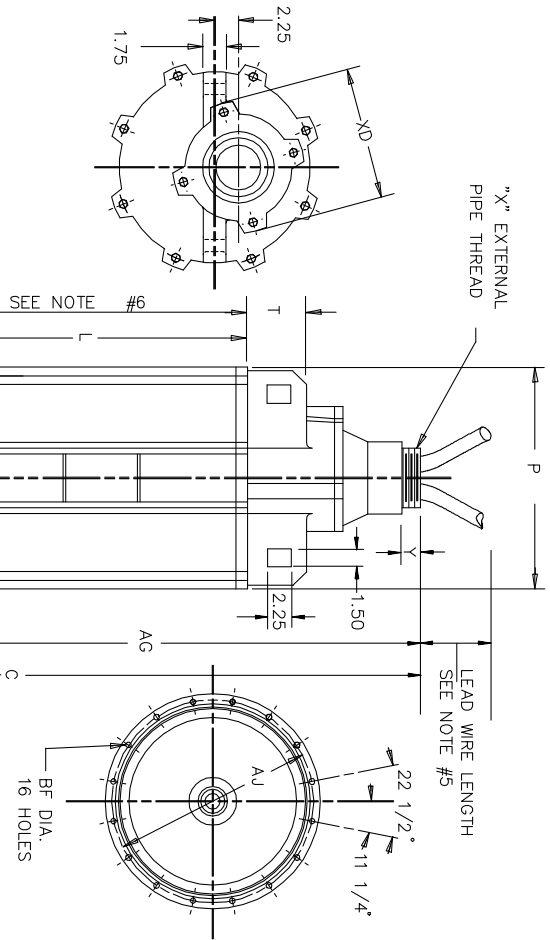
DR. BY P.B. GREENE
 CK. BY W.L. SMITH
 APP. BY W.L. SMITH
 DATE 01/29/01

**A-C MOTOR
 PERFORMANCE
 CURVES**

W00971-A-A001

ISSUE DATE 01/29/01 Page 9 of 11

DUTY MASTER ALTERNATING CURRENT MOTORS
 SQUIREL-CAGE INDUCTION
 ENCLOSURE: TOTALLY ENCLOSED SUBMERSIBLE
 FRAME 360TY THRU L360TY



1.)

FRAME	C	L	P	T	U (3)	V	W	AG	AH	AJ	AK (4)	AL
360TY	47.1	31.25	18.38	4.25	2.4997	3.19	2.12	43.25	6.56	18.75	17.500	15.25
L360TY	49.1	33.25	18.38	4.25	2.4997	3.19	2.12	45.25	6.56	18.75	17.500	15.25

1.)

FRAME	BB	BD (2)	BE	BF	XT	LEAD CONNECTION		B.E. KEY	
						X	Y	XD	SQ. LGTH.
360TY	.25	20.25	1.12	.69	1-1/2-12.3 - 8	1.25	10.88	.50	3.00
L360TY	.25	20.25	1.12	.69	1-1/2-12.3 - 8	1.25	10.88	.50	3.00

- 1.) SPECIAL DIMENSIONS APPLYING TO THIS ORDER ON THIS LINE.
 2.) "BP" VARIES +.010.
 3.) "U" VARIES +.0000, -.0005.
 4.) "AK" VARIES +.000, -.002
 5.) LEAD WIRE LENGTH AS SPECIFIED ON SALES ORDER.
 6.) MINIMUM SUBMERGED DEPTH

FACE ROUNDT AND ECCENTRICITY .008 MAX. T.I.R.
 PROTECTIVE CONDUIT FURNISHED BY CUSTOMER.

090-056990

CUSTOMER IS RESPONSIBLE FOR DETERMINING THAT BALDOR'S PRODUCT WILL PERFORM SUITABLY IN THE INTENDED APPLICATION.

REV. DESC: UPDATE NOTES, LOAD TO BUS	VERSION: 00	TDR: 00000921348
REV. LTR: -	REVISED: 09:19:59 04/20/2015	BY: RCGWT
FILE: \RGG\00024\962		
MTL: -		

BALDOR
 DIM SHT 360TY/L360TY SUBMERSIBLE
 SH 1 of 1

416820-036

A-C MOTOR
CONNECTION DIAGRAM
STANDARD 3 LEAD CONNECTED



(N.P. 1575-BA)

REV. DESC: LOADED TO BUS, C/R 335225

REV. LTR: -

VERSION: 00

TDR: 000000538207

FILE: \MGA\00000\682

REVISED: 11:54:06 04/30/2010

MTL: -

BY: RAGRA

BALDOR

CONN DIAG - STANDARD 3 LEAD

SH 1 of 1

416820-036