

ABB BALDOR RELIANCE III

Customer information packet

SUM70756-4

7.5HP, 1150RPM, 3PH, 60HZ, 210TY, XPNV, V1

Class - CLI GP C,D

Division - Not Applicable

Specifications

Enclosure	XPNV
Frame	210TY
Frame Material	Iron
Frequency	60.00 Hz
Haz Area Class and Group	CLI GP C,D
Haz Area Division	Not Applicable
Motor Letter Type	Three Phase
Phase	3
Agency Approvals	CCSA US
Base Indicator	Rigid
Bearing Grease Type	Polyrex EM (-20F +300F)
Cable Length	NO CABLE
Design Code	B
Drip Cover	No Drip Cover
Duty Rating	CONT
Haz Area Temp Code	T3C
Heater Indicator	No Heater
Insulation Class	F
Inverter Code	Not Inverter
IP Rating	IP68
KVA Code	G
Lifting Lugs	Standard Lifting Lugs
Motor Standards	NEMA
Motor Type	M
Mounting Arrangement	V1
Number of Poles	6
Product Family	Pump - Centrifugal
Pulley End Bearing Type	Ball
Pulley Face Code	Standard
Service Factor	1.15
Shaft Diameter	1.437 IN
Shaft Rotation	Reversible

Part Detail

Revision	D
Type	AC
Mech. spec.	
Base	
Status	PRD/A
Elec. spec.	85997
Layout	619738-003
Eff. date	12-10-2024
CD Diagram	416820-001
Poles	///
Leads	
Proprietary	False
Created date	08-09-2021

Shaft Slinger Indicator	No Slinger
Speed Code	Single Speed
Starting Method	Direct on line
Thermal Device - Winding	Normally Closed Thermostat

Nameplate

000613007MS

CAT.NO.	SUM70756-4	SPEC NO.	S21-CWS0-0007			
SER.NO.		FRAME SIZE	210TY			
	HP	RPM	VOLTS	AMPS	HZ	S.F.
	7.5	1150	230/460	20.8/10.4	6-60	1.00
	7.5	1150	230/460	20.8/10.4	60	1.15
CONSTANT HP RPM		@	HZ	CODE	G	
TYPE	P	INSUL.CLASS	F	TORQUE	10:1_VT	DESIGN B
D.E. BRG.	60BC02JPP30A	ENCL	TENV	DUTY	15MIN	PH 3
O.D.E. BRG.	30BC02JPG30A	MOTOR WEIGHT		AMB	40	
FINAL CONN VOLTAGE = 460 *15						
MIN IN AIR ;SUB. IN WATER						
ONLY						

000613007RC

CLASS I GROUP	C D X	NO.	
CLASS II GROUP	X X X		
OPERATING TEMP CODE	T3C		

000692000MB

SUITABLE FOR OPERATION ON PWM
INVERTER EQUIPPED WITH IGBT
DEVICES AND CAPABLE OF
CARRIER
FREQUENCY OF 2 KHZ MINIMUM

000613007MS

CAT.NO.	SUM70756-4	SPEC NO.	S21-CWS0-0007			
SER.NO.		FRAME SIZE	210TY			
	HP	RPM	VOLTS	AMPS	HZ	S.F.
	7.5	1150	230/460	20.8/10.4	6-60	1.00
	7.5	1150	230/460	20.8/10.4	60	1.15
CONSTANT HP RPM		@	HZ	CODE	G	
TYPE	P	INSUL.CLASS	F	TORQUE	10:1_VT	DESIGN B
D.E. BRG.	60BC02JPP30A	ENCL	TENV	DUTY	15MIN	PH 3
O.D.E. BRG.	30BC02JPG30A	MOTOR WEIGHT		AMB	40	
	FINAL CONN VOLTAGE = 460 *15					
	MIN IN AIR ;SUB. IN WATER					
	ONLY					

AC Induction Motor performance data

Record #85997 - Typical performance - not guaranteed values

Winding	07WGA0019
Type	0758M
Enclosure	PART

Nameplate data

Rated Output			7.5
Volts			230/460
Full Load Amps			20.8/10.4
R.P.M.			1150
Hz	60	Phase	3
KVA Code			G
S.F.			1.15
NEMA Nom. Eff.	89.5	Power Factor	75
Duty			15 MIN
S.F. Amps			

460 V, 60 Hz:

High Voltage Connection

Full Load Torque	34 LB-FT
Start Configuration	direct on line
Breakdown Torque	84.38 LB-FT
Pull-up Torque	61.39 LB-FT
Locked-rotor Torque	74.5 LB-FT
Starting Current	59.05 A
No-load Current	4.22
Line-line Res. @ 25°C	1.26 Ω
Temp. Rise @ Rated Load	16°C
Temp. Rise @ S.F. Load	21°C
Locked-rotor Power Factor	21
Rotor inertia	1.44 lb-ft ²

Load Characteristics 460 V, 60 Hz, 7.5 HP

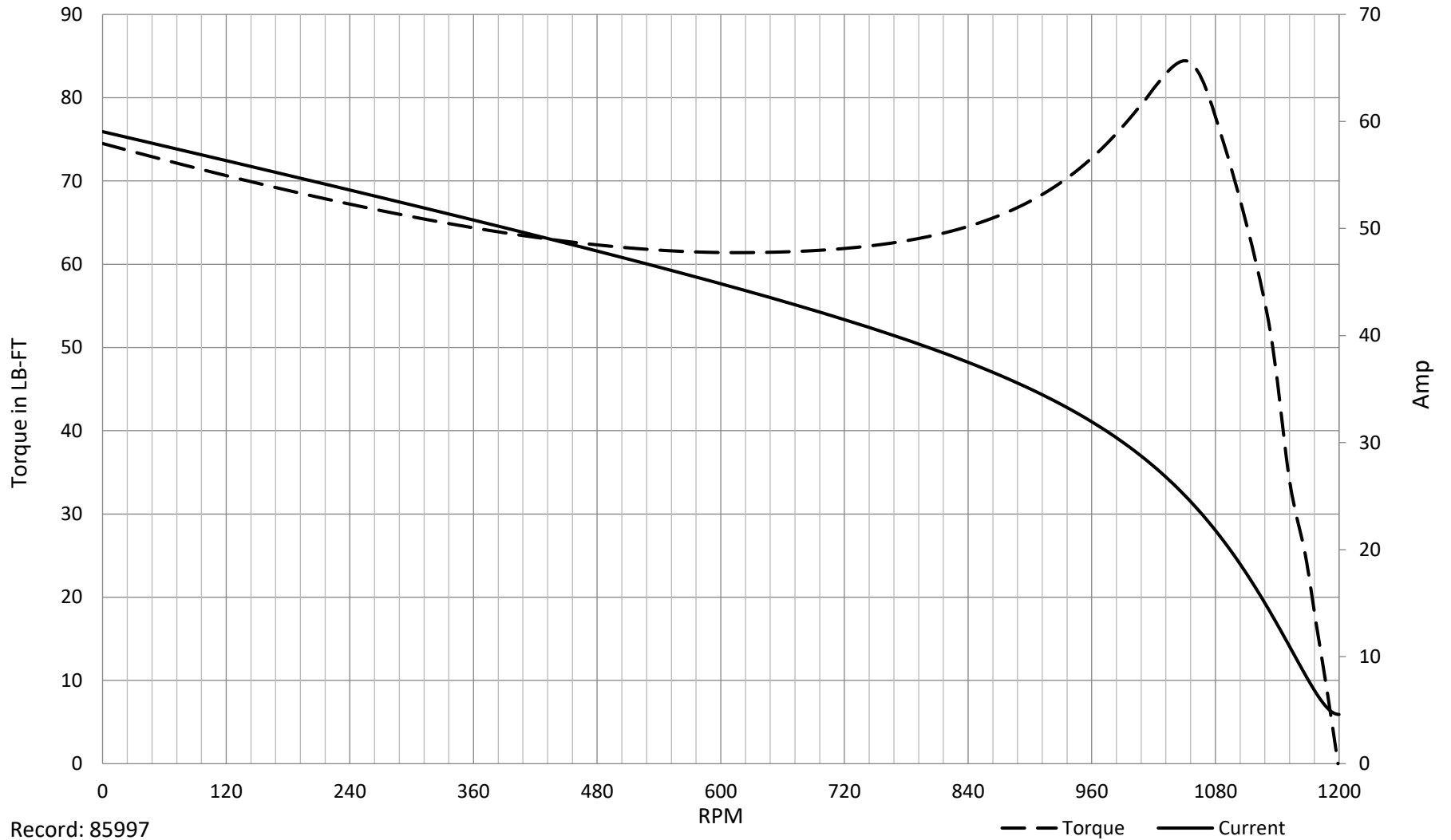
% of Rated Load	NL	25	50	75	100	125	150	SF
Power Factor	5	41	63	72	75	76	74	76
Efficiency	0	90.9	91.6	90.6	89.5	86.9	83.5	88.1
Speed	1199	1189	1178	1167	1152	1135	1110	1142
Line amperes	4.22	4.73	6.13	8.11	10.41	13.2	17	12.1

SPEED TORQUE / SPEED CURRENT CURVES

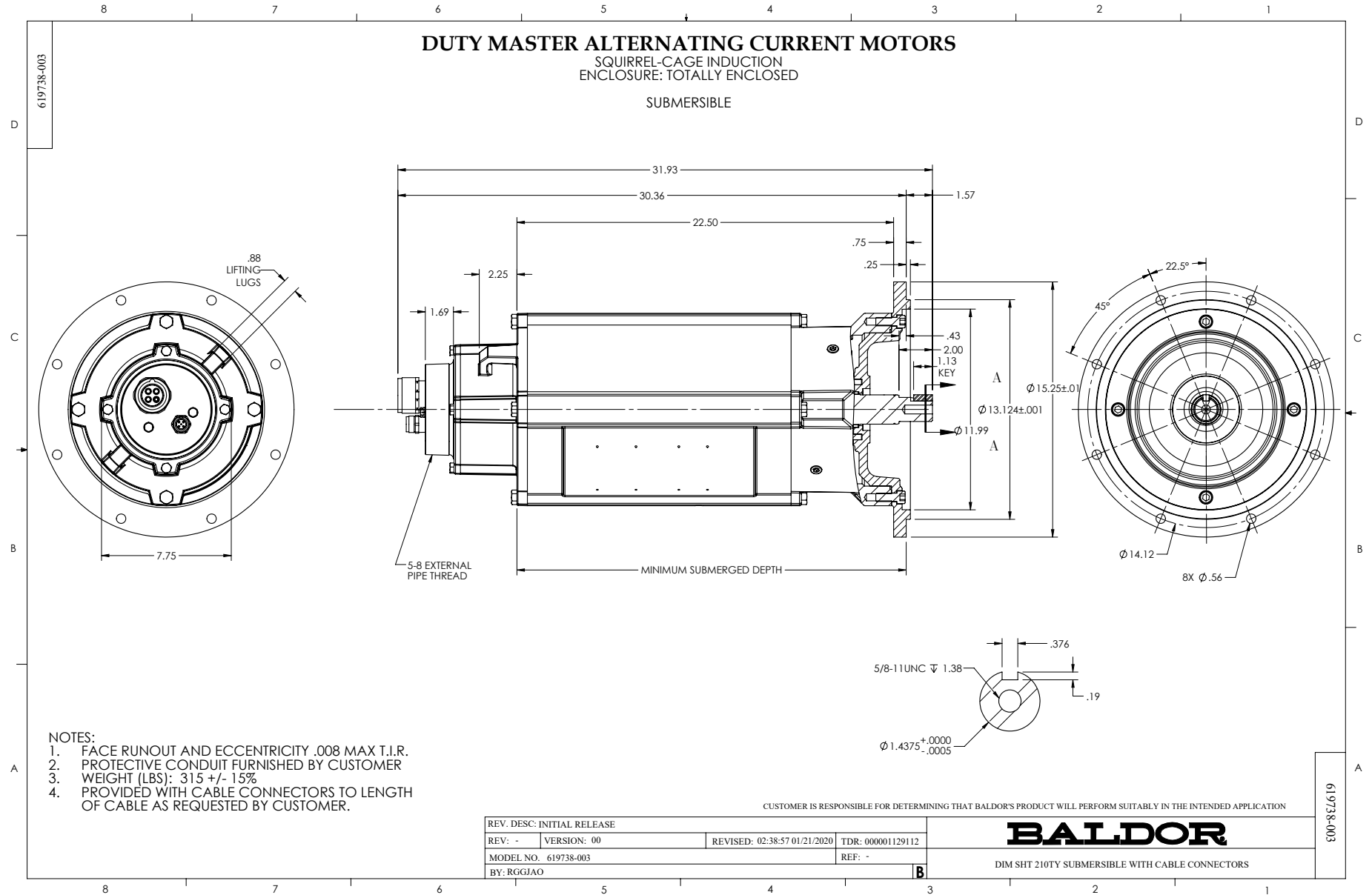


07WGA0019

7.5HP 460V 60HZ

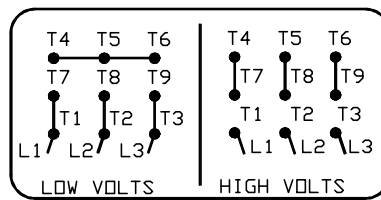
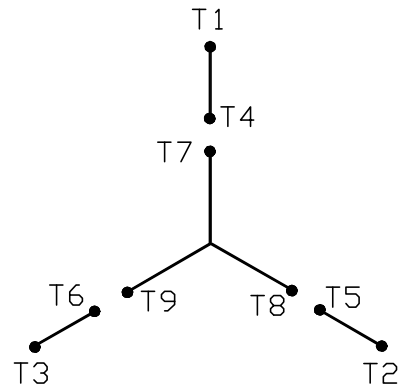


Record: 85997



416820-001

A-C MOTOR
CONNECTION DIAGRAM
STANDARD 9 LEAD Y CONNECTED



(N. P. 1575-A)

416820-001

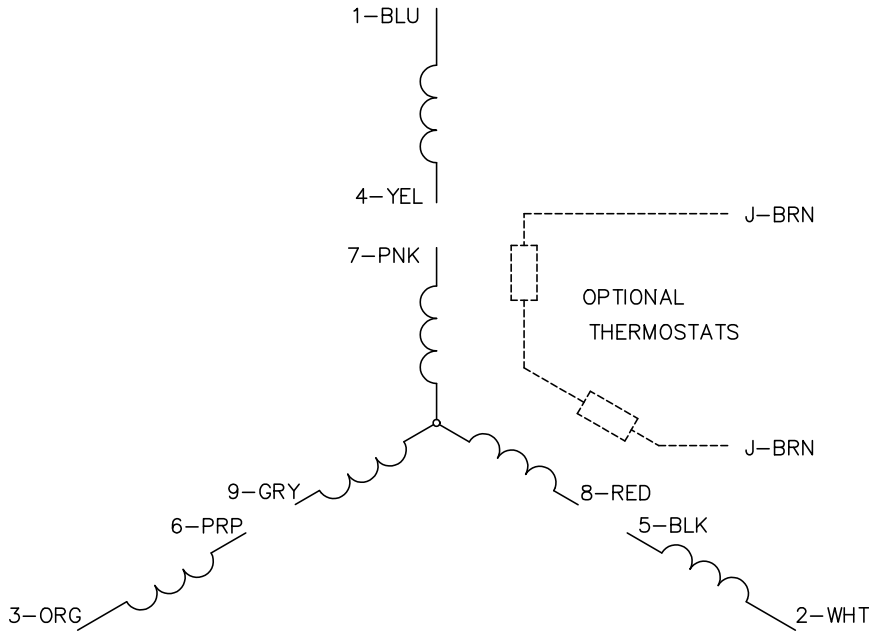
REV. DESC: FONT CHANGE FOR PDF SEARCHABLE		
REV. LTR: A	VERSION: 01	TDR: 000001009382
FILE: \MGA\00000\659	REVISED: 10: 33: 07 12/21/2016	BY: MGHMTT
MTL: -		© □

BALDOR

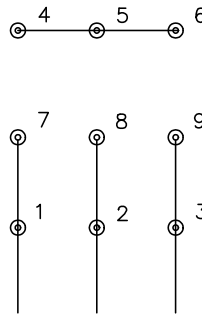
CONN DIAG - STANDARD 9 LEAD, Y CONNECTED

SH 1 of 1

CD0005

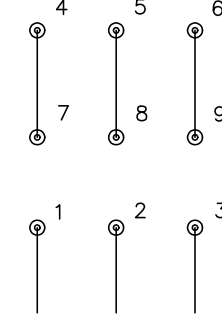


LOW VOLTAGE
(2Y)



LINE

HIGH VOLTAGE
(1Y)



LINE

NOTES:

1. INTERCHANGE ANY TWO LINE LEADS TO REVERSE ROTATION.
2. OPTIONAL THERMOSTATS ARE PROVIDED WHEN SPECIFIED.
3. ACTUAL NUMBER OF INTERNAL PARALLEL CIRCUITS MAY BE A MULTIPLE OF THOSE SHOWN ABOVE.
4. LEAD COLORS ARE OPTIONAL. LEADS MUST ALWAYS BE NUMBERED AS SHOWN.

CD0005

REV. DESC: REVISE TO SHOW OPTIONAL COLORS			
REV. LTR: E	BY: JLP	REVISED: 01/19/99 10:15	TDR: 0171435
S00000		FILE: AAA00005140	MDL: -
		MTL: -	

BALDOR ELECTRIC Co.

3PH, DV, 9 LEADS