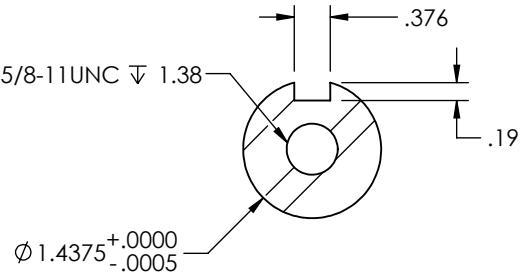
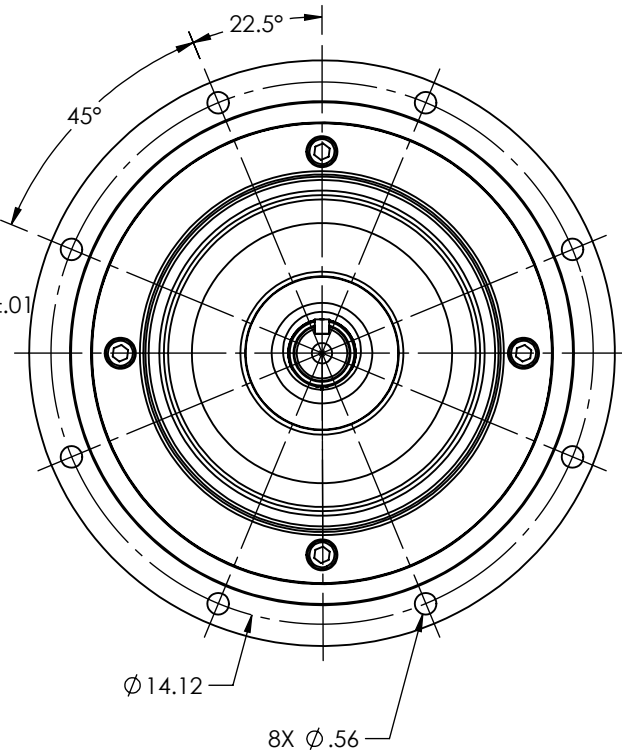
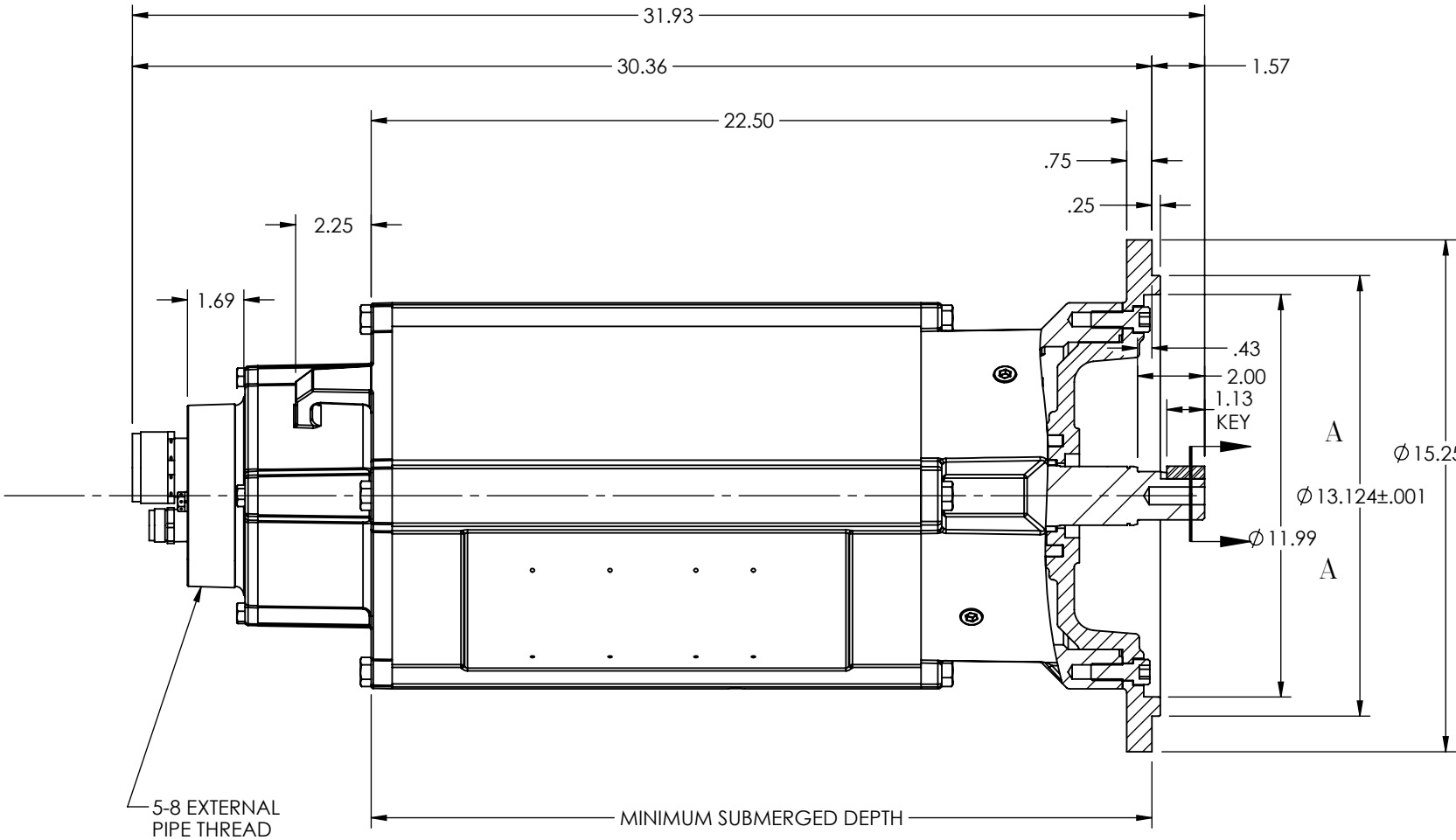
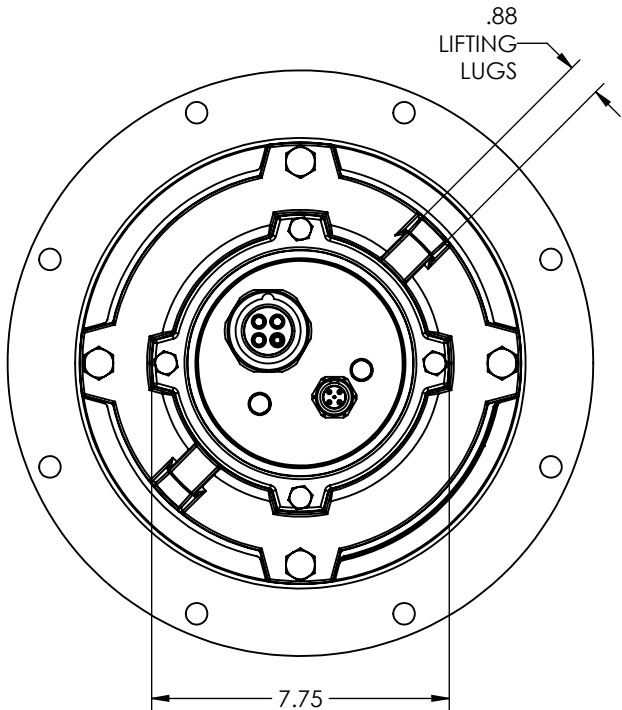


DUTY MASTER ALTERNATING CURRENT MOTORS

SQUIRREL-CAGE INDUCTION  
ENCLOSURE: TOTALLY ENCLOSED

SUBMERSIBLE

619738-003



- NOTES:
1. FACE RUNOUT AND ECCENTRICITY .008 MAX T.I.R.
  2. PROTECTIVE CONDUIT FURNISHED BY CUSTOMER
  3. WEIGHT (LBS): 315 +/- 15%
  4. PROVIDED WITH CABLE CONNECTORS TO LENGTH OF CABLE AS REQUESTED BY CUSTOMER.

CUSTOMER IS RESPONSIBLE FOR DETERMINING THAT BALDOR'S PRODUCT WILL PERFORM SUITABLY IN THE INTENDED APPLICATION

REV. DESC: INITIAL RELEASE			
REV: -	VERSION: 00	REVISED: 02:38:57 01/21/2020	TDR: 000001129112
MODEL NO. 619738-003			REF: -
BY: RGGJAO			<b>B</b>

**BALDOR**

DIM SHT 210TY SUBMERSIBLE WITH CABLE CONNECTORS

619738-003