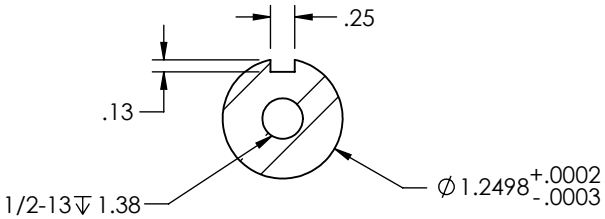
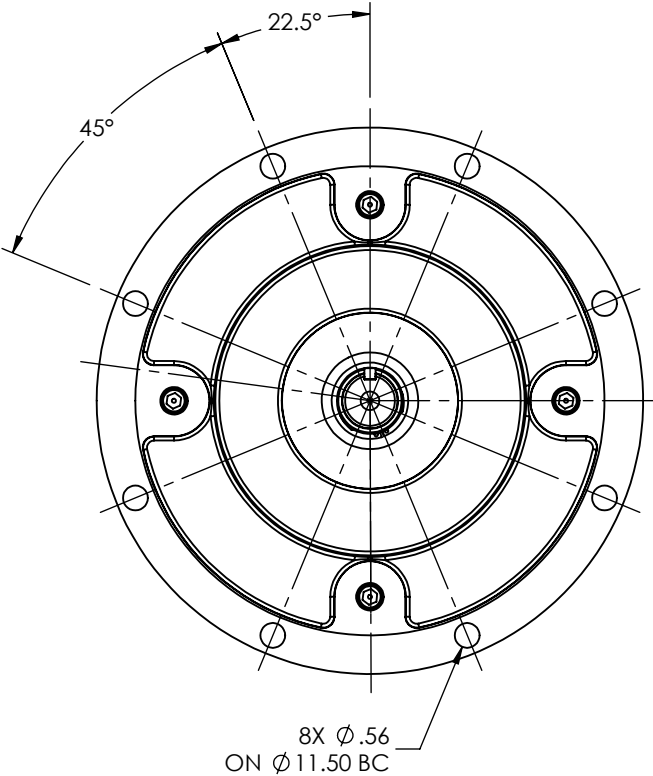
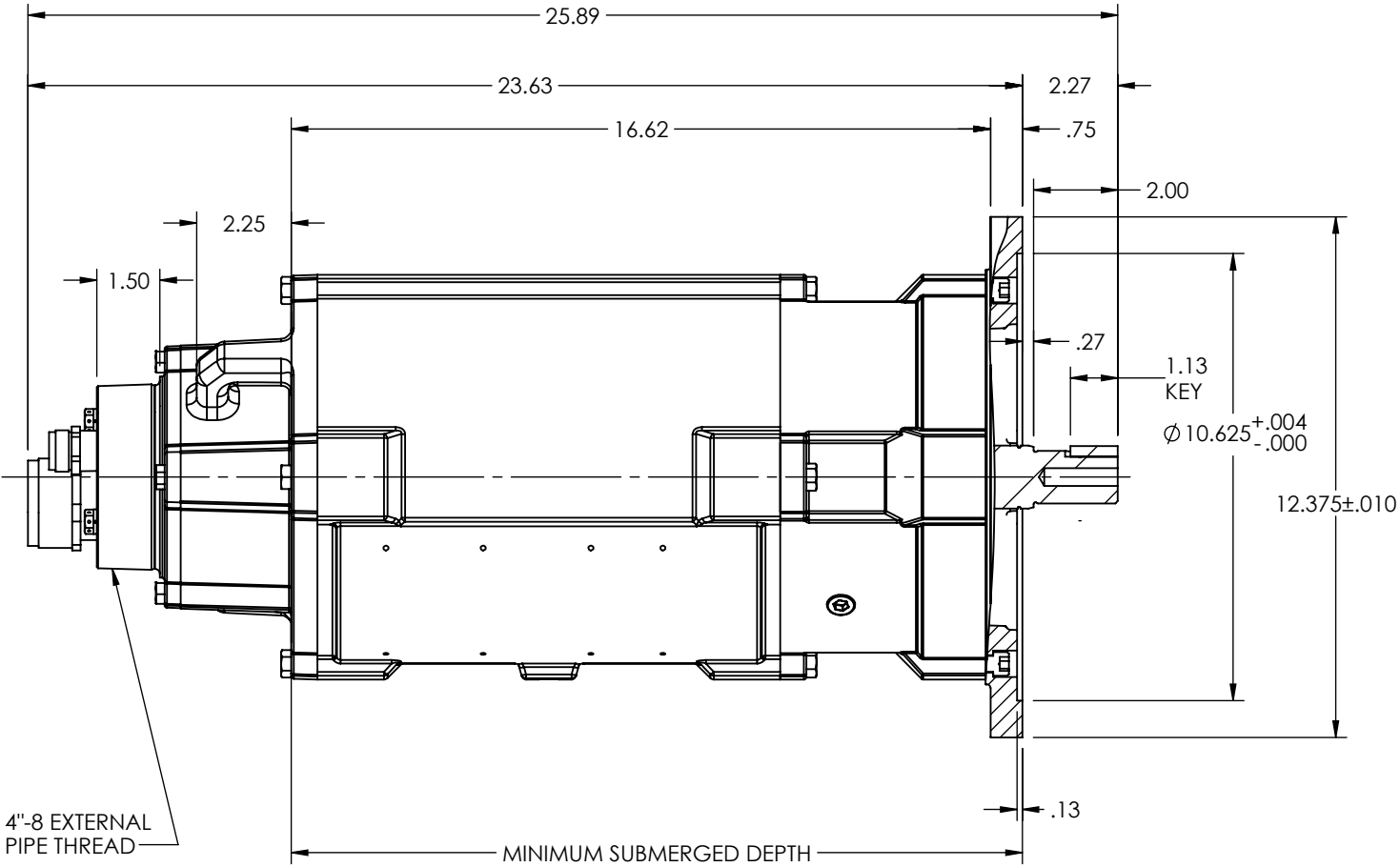
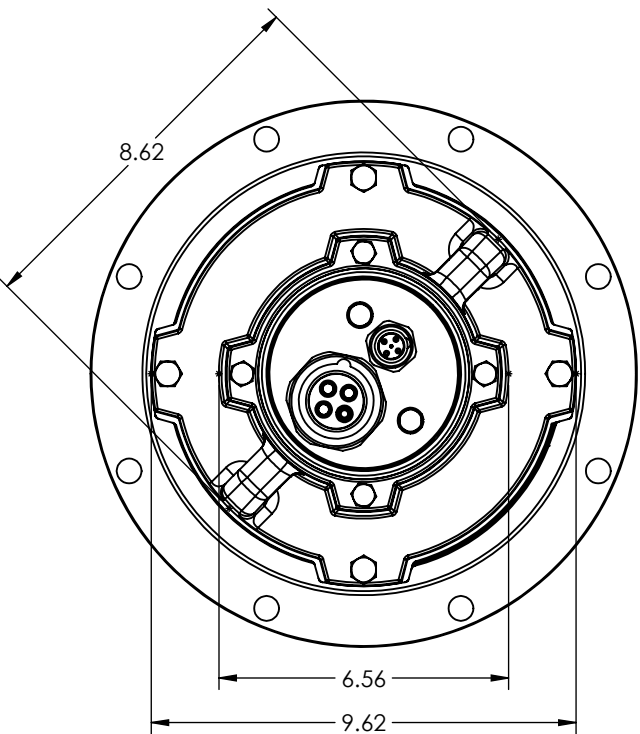


DUTY MASTER ALTERNATING CURRENT MOTORS

SQUIRREL-CAGE INDUCTION  
ENCLOSURE: TOTALLY ENCLOSED

SUBMERSIBLE

619738-001



SECTION A-A

- NOTES:
1. FACE RUNOUT AND ECCENTRICITY .008 MAX T.I.R.
  2. PROTECTIVE CONDUIT FURNISHED BY CUSTOMER
  3. WEIGHT (LBS): 200 ± 15%
  4. PROVIDED WITH CABLE ONNECTOR TO LENGTH OF CABLE AS REQUESTED BY CUSTOMER

CUSTOMER IS RESPONSIBLE FOR DETERMINING THAT BALDOR'S PRODUCT WILL PERFORM SUITABLY IN THE INTENDED APPLICATION

REV. DESC: INITIAL RELEASE			
REV: -	VERSION: 00	REVISED: 04:18:07 04/23/2019	TDR: 000001101861
MODEL NO. 619738-001			REF: -
BY: RGGJAO			<b>B</b>

**BALDOR**

DIM SHT 180TY SUBMERSIBLE WITH CABLE CONNECTORS

619738-001