

**BALDOR • RELIANCE**

---

# Customer information packet

## SUM70204SM-8

2HP, 1755RPM, 3PH, 60HZ, 180TY, XPNV, V1

Class - CLI GP C,D

Division - Not Applicable

## Specifications

Enclosure	XPNV
Frame	180TY
Frame Material	Iron
Frequency	60.00 Hz
Haz Area Class and Group	CLI GP C,D
Haz Area Division	Not Applicable
Motor Letter Type	Three Phase
Phase	3
Agency Approvals	CCSA US
Base Indicator	Rigid
Bearing Grease Type	Polyrex EM (-20F +300F)
Design Code	B
Drip Cover	No Drip Cover
Duty Rating	CONT
Haz Area Temp Code	T3C
Heater Indicator	No Heater
Insulation Class	F
Inverter Code	Not Inverter
IP Rating	NONE
KVA Code	K
Lifting Lugs	Standard Lifting Lugs
Motor Standards	NEMA
Motor Type	M
Mounting Arrangement	V1
Number of Poles	4
Product Family	Pump - Centrifugal
Pulley End Bearing Type	Ball
Pulley Face Code	Standard
Service Factor	1.15
Shaft Diameter	0.875 IN
Shaft Rotation	Reversible
Shaft Slinger Indicator	No Slinger

## Part detail

Revision	B
Type	AC
Mech. spec.	
Base	
Status	PRD/A
Elec. spec.	85827
Layout	619738-002
Eff. date	12-10-2024
CD Diagram	
Poles	///
Leads	
Proprietary	False
Created date	11-30-2021

<b>Speed Code</b>	Single Speed
<b>Starting Method</b>	Direct on line
<b>Thermal Device - Winding</b>	Normally Closed Thermostat

**Nameplate**

**000613007MS**

<b>CAT.NO.</b>	SUM70204SM-8	<b>SPEC NO.</b>	S18-CWS0-0018			
<b>SER.NO.</b>		<b>FRAME SIZE</b>	180TY			
	<b>HP</b>	<b>RPM</b>	<b>VOLTS</b>	<b>AMPS</b>	<b>HZ</b>	<b>S.F.</b>
	2	1755	200/400	7/3.5	6-60	1.00
	2	1755	200/400	7/3.5	60	1.15
<b>CONSTANT HP RPM</b>		@	<b>HZ</b>	<b>CODE</b>	K	
<b>TYPE</b>	P	<b>INSUL.CLASS</b>	F	<b>TORQUE</b>	10:1_VT	<b>DESIGN</b> B
<b>D.E. BRG.</b>	50BC02JPP30A	<b>ENCL</b>	TENV	<b>DUTY</b>	15 MIN	<b>PH</b> 3
<b>O.D.E. BRG.</b>	25BC02JPG30A	<b>MOTOR WEIGHT</b>		<b>AMB</b>	40	
	FINAL CONN VOLTAGE = 200 *15					
	MIN IN AIR ;SUB. IN SEWAGE /					
	WATER ONLY					

---

**000613007RC**

---

<b>CLASS I GROUP</b>	C D X	<b>NO.</b>	
<b>CLASS II GROUP</b>	X X X		
<b>OPERATING TEMP CODE</b>	T3C		

---

---

**000692000MB**

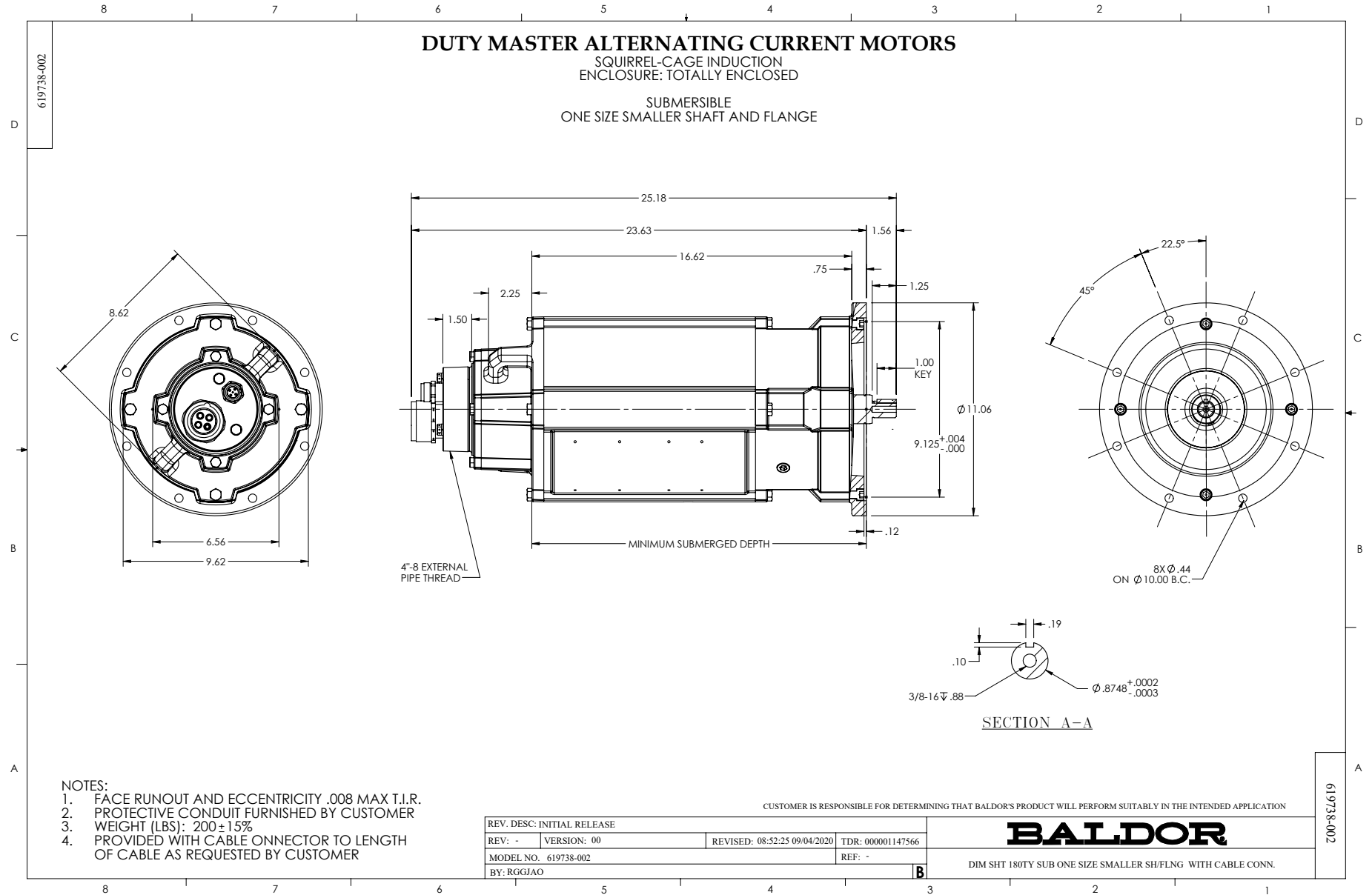
---

SUITABLE FOR OPERATION ON PWM
INVERTER EQUIPPED WITH IGBT
DEVICES AND CAPABLE OF
CARRIER
FREQUENCY OF 2 KHZ MINIMUM

---

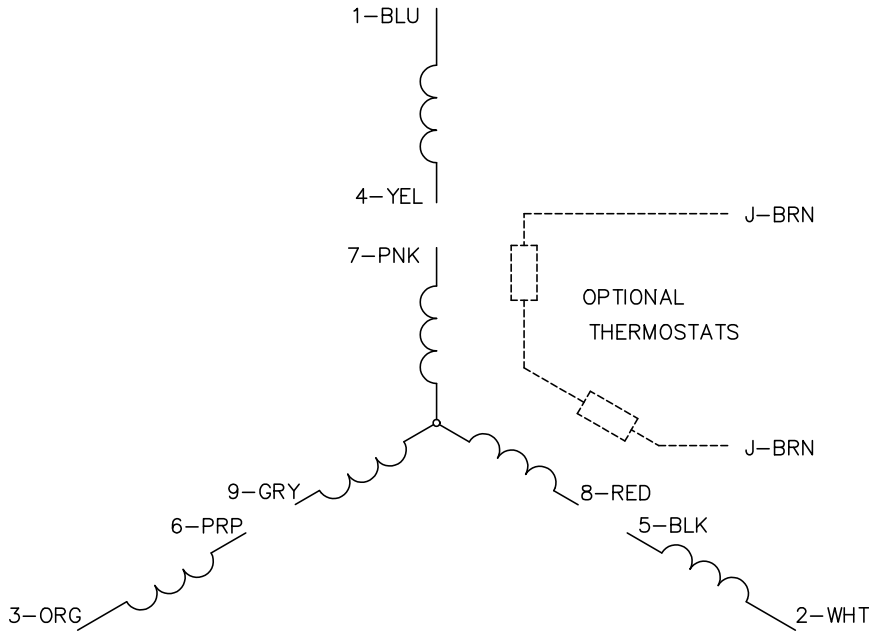
**000613007MS**

<b>CAT.NO.</b>	SUM70204SM-8	<b>SPEC NO.</b>	S18-CWS0-0018				
<b>SER.NO.</b>		<b>FRAME SIZE</b>	180TY				
	<b>HP</b>	<b>RPM</b>	<b>VOLTS</b>	<b>AMPS</b>	<b>HZ</b>	<b>S.F.</b>	
	2	1755	200/400	7/3.5	6-60	1.00	
	2	1755	200/400	7/3.5	60	1.15	
<b>CONSTANT HP RPM</b>		@	<b>HZ</b>	<b>CODE</b>	K		
<b>TYPE</b>	P	<b>INSUL.CLASS</b>	F	<b>TORQUE</b>	10:1_VT	<b>DESIGN</b>	B
<b>D.E. BRG.</b>	50BC02JPP30A	<b>ENCL</b>	TENV	<b>DUTY</b>	15 MIN	<b>PH</b>	3
<b>O.D.E. BRG.</b>	25BC02JPG30A	<b>MOTOR WEIGHT</b>		<b>AMB</b>	40		
	FINAL CONN VOLTAGE = 200 *15						
	MIN IN AIR ;SUB. IN SEWAGE /						
	WATER ONLY						

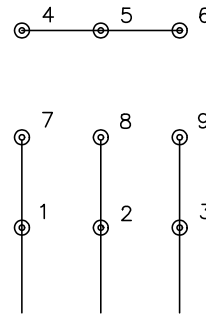




CD0005

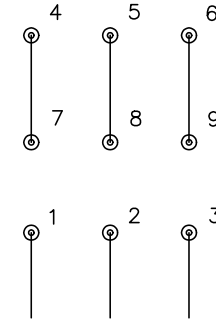


LOW VOLTAGE (2Y)



LINE

HIGH VOLTAGE (1Y)



LINE

NOTES:

1. INTERCHANGE ANY TWO LINE LEADS TO REVERSE ROTATION.
2. OPTIONAL THERMOSTATS ARE PROVIDED WHEN SPECIFIED.
3. ACTUAL NUMBER OF INTERNAL PARALLEL CIRCUITS MAY BE A MULTIPLE OF THOSE SHOWN ABOVE.
4. LEAD COLORS ARE OPTIONAL. LEADS MUST ALWAYS BE NUMBERED AS SHOWN.

CD0005

REV. DESC: REVISE TO SHOW OPTIONAL COLORS			
REV. LTR: E	BY: JLP	REVISED: 01/19/99 10:15	TDR: 0171435
S00000		FILE: AAA00005140	MDL: -
		MTL: -	

BALDOR ELECTRIC Co.

3PH, DV, 9 LEADS