

ABB BALDOR RELIANCE III

Customer information packet

SUM70156SM

1.5HP, 1160RPM, 3PH, 60HZ, 180TY, XPNV, V1

Class - CLI GP C,D

Division - Not Applicable

Specifications

Enclosure	XPNV
Frame	180TY
Frame Material	Iron
Frequency	60.00 Hz
Haz Area Class and Group	CLI GP C,D
Haz Area Division	Not Applicable
Motor Letter Type	Three Phase
Phase	3
Agency Approvals	CCSA US
Base Indicator	Rigid
Bearing Grease Type	Polyrex EM (-20F +300F)
Cable Length	25 FOOT
Design Code	B
Drip Cover	No Drip Cover
Duty Rating	CONT
Haz Area Temp Code	T3C
Heater Indicator	No Heater
Insulation Class	F
Inverter Code	Not Inverter
IP Rating	IP68
KVA Code	K
Lifting Lugs	Standard Lifting Lugs
Motor Standards	NEMA
Motor Type	M
Mounting Arrangement	V1
Number of Poles	6
Product Family	Pump - Centrifugal
Pulley End Bearing Type	Ball
Pulley Face Code	Standard
Service Factor	1.15
Shaft Diameter	0.875 IN
Shaft Rotation	Reversible

Part Detail

Revision	A
Type	AC
Mech. spec.	
Base	
Status	PRD/A
Elec. spec.	92224
Layout	619738-002
Eff. date	10-29-2025
CD Diagram	
Poles	///
Leads	
Proprietary	False
Created date	07-25-2022

Shaft Slinger Indicator	No Slinger
Speed Code	Single Speed
Starting Method	Direct on line
Thermal Device - Winding	Normally Closed Thermostat

Nameplate

000613007MN

CAT NO	SUM70156SM	SPEC NO.	S18-CWS0-0075						
HP	1.5	AMPS	5.0/2.5	VOLTS	230/460	DESIGN	B		
FRAME SIZE	180TY	RPM	1160	HZ	60	AMB	40	SF	1.15
D.E. BRG.	50BC02JPP30A	PH	3	DUTY	15 MIN	INSUL	F		
O.D.E. BRG.	25BC02JPG30A	TYPE	P	ENCL	TENV	CODE	K		
		POWER FACTOR		NEMA-NOM-EFF					
		MAX CORR KVAR		GUARANTEED EFFICIENCY					
		NEMA NOM/CSA QUOTED EFF @		100% LOAD					
SER.NO.		MOTOR WEIGHT		LBS.					
	FINAL CONN VOLTAGE = 230 *15								
	MIN IN AIR								

000613007RC

CLASS I GROUP	C D X	NO.	
CLASS II GROUP	X X X		
OPERATING TEMP CODE	T3C		

000613007MR

CAT NO	SUM70156SM	SPEC NO.	S18-CWSO-0075						
HP	1.5	AMPS	5.0/2.5	VOLTS	230/460	DESIGN	B		
FRAME SIZE	180TY	RPM	1160	HZ	60	AMB	40	SF	1.15
D.E. BRG.	50BC02JPP30A	PH	3	DUTY	15 MIN	INSUL	F		
O.D.E. BRG.	25BC02JPG30A	TYPE	P	ENCL	TENV	CODE	K		
		POWER FACTOR		NEMA-NOM-EFF					
		MAX CORR KVAR		GUARANTEED EFFICIENCY					
		NEMA NOM/CSA QUOTED EFF @		100% LOAD					
SER.NO.		MOTOR WEIGHT		LBS.					
	FINAL CONN VOLTAGE = 230 *15								
	MIN IN AIR								

AC Induction Motor performance data

Record #92224 - Typical performance - not guaranteed values

Winding	06WGA0021
Type	0630M
Enclosure	TENV

Nameplate data

Rated Output			1.5
Volts			230/460
Full Load Amps			5/2.5
R.P.M.			1160
Hz	60	Phase	3
KVA Code			K
S.F.			1.15
NEMA Nom. Eff.	87.5	Power Factor	64
Duty			15 MIN
S.F. Amps			

460 V, 60 Hz:

High Voltage Connection

Full Load Torque	6.77 LB-FT
Start Configuration	direct on line
Breakdown Torque	24 LB-FT
Pull-up Torque	12.5 LB-FT
Locked-rotor Torque	15.8 LB-FT
Starting Current	16.2 A
No-load Current	1.63
Line-line Res. @ 25°C	7.01 Ω
Temp. Rise @ Rated Load	26°C
Temp. Rise @ S.F. Load	31°C
Locked-rotor Power Factor	30.4
Rotor inertia	0.282 lb-ft ²

Load Characteristics 460 V, 60 Hz, 1.5 HP

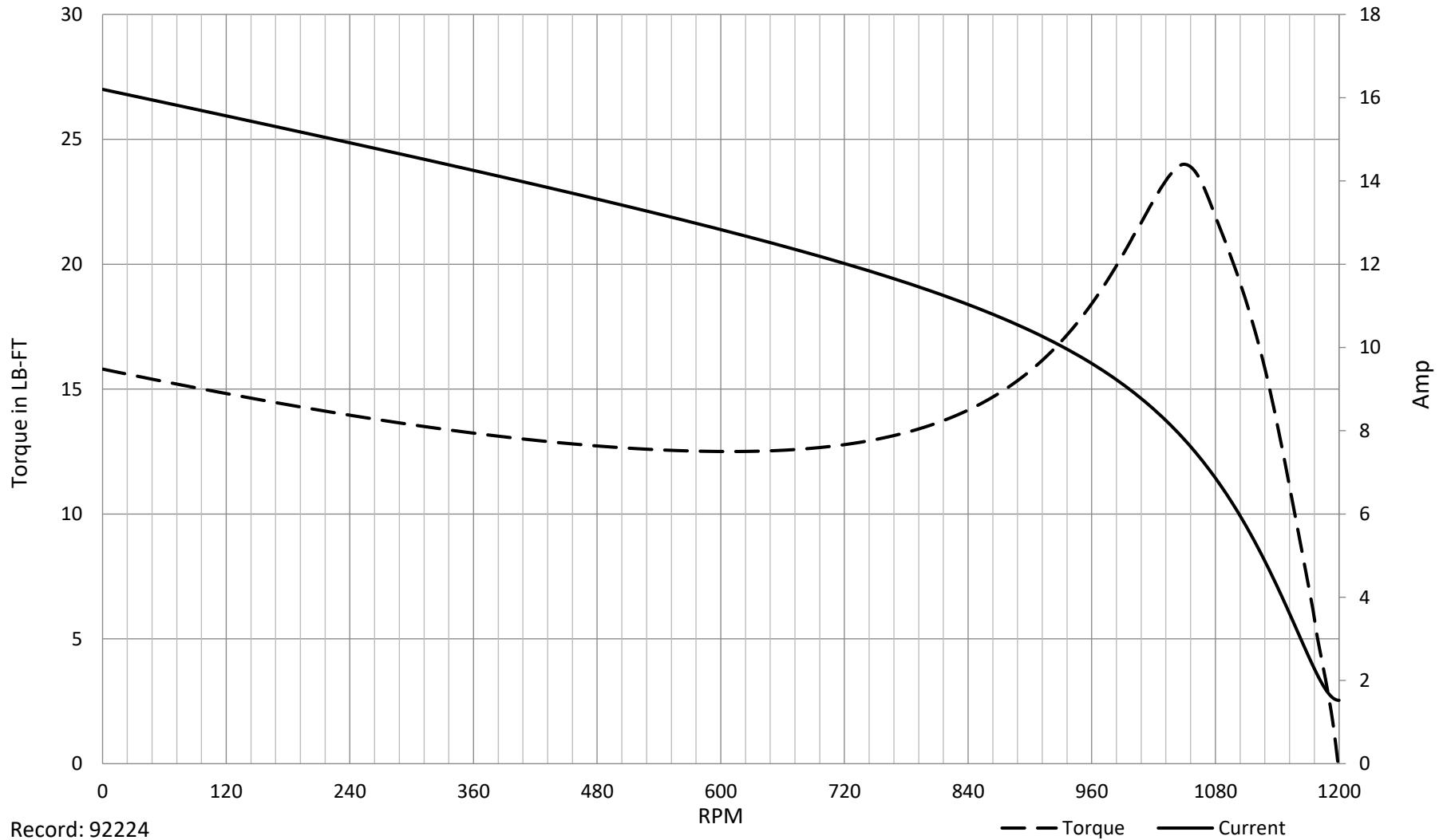
% of Rated Load	NL	25	50	75	100	125	150	SF
Power Factor	6	27	44	56	64	69	73	67
Efficiency	0	76.3	84.8	86.8	87.5	87.1	85.8	87.3
Speed	1199	1194	1187	1179	1172	1163	1153	1167
Line amperes	1.63	1.7	1.9	2.18	2.51	2.92	3.38	2.76

SPEED TORQUE / SPEED CURRENT CURVES

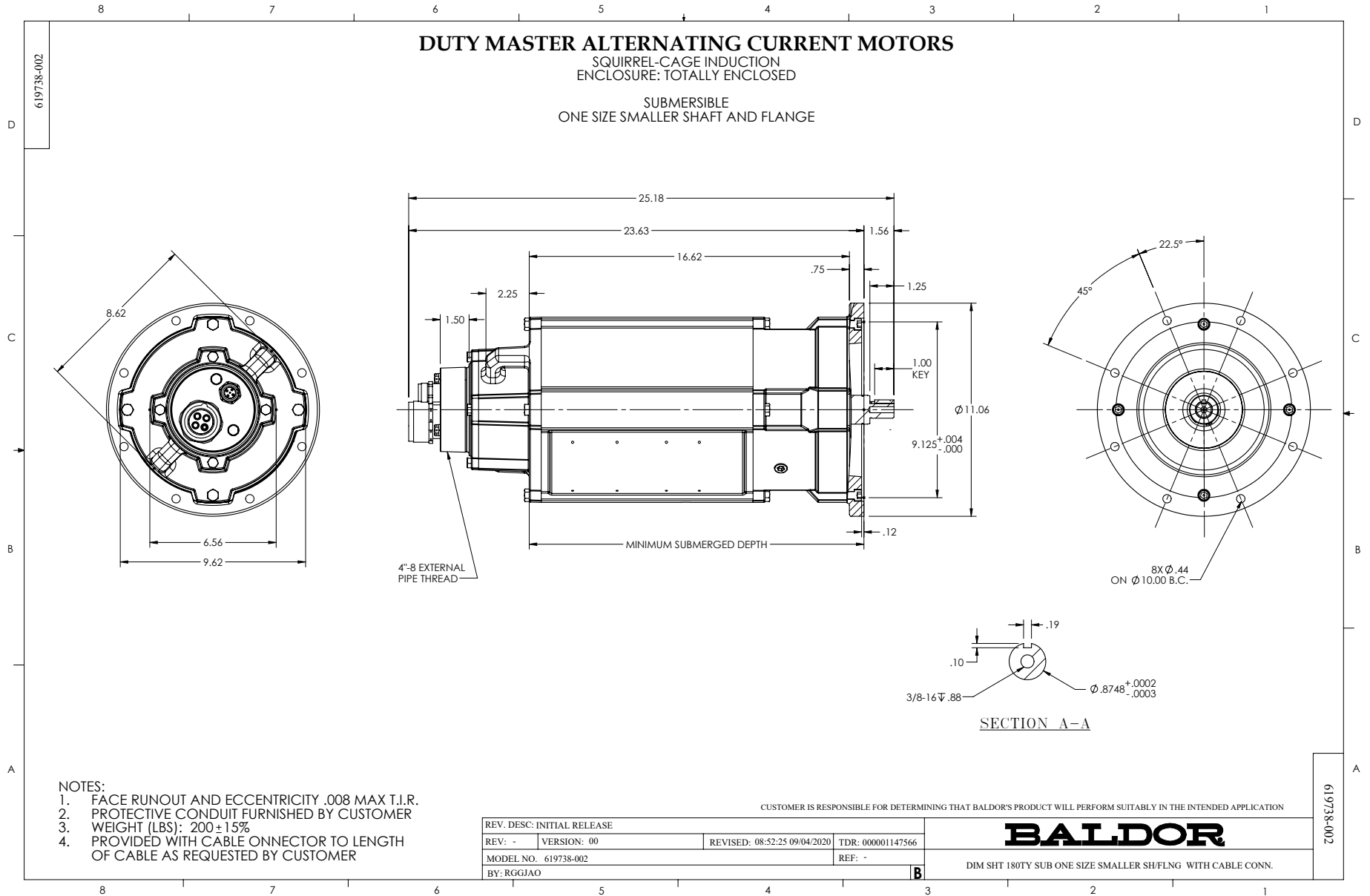


06WGA0021

1.5HP 460V 60HZ



Record: 92224



CD0005



LOW VOLTAGE
(2Y)



LINE

HIGH VOLTAGE
(1Y)



LINE

NOTES:

1. INTERCHANGE ANY TWO LINE LEADS TO REVERSE ROTATION.
2. OPTIONAL THERMOSTATS ARE PROVIDED WHEN SPECIFIED.
3. ACTUAL NUMBER OF INTERNAL PARALLEL CIRCUITS MAY BE A MULTIPLE OF THOSE SHOWN ABOVE.
4. LEAD COLORS ARE OPTIONAL. LEADS MUST ALWAYS BE NUMBERED AS SHOWN.

CD0005

REV. DESC: REVISE TO SHOW OPTIONAL COLORS

REV. LTR: E BY: JLP REVISED: 01/19/99 10:15 TDR: 0171435

500000

FILE: AAA00005140

MDL: -

MTL: -

BALDOR ELECTRIC Co.

3PH, DV, 9 LEADS