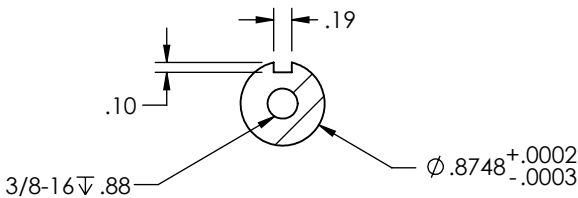
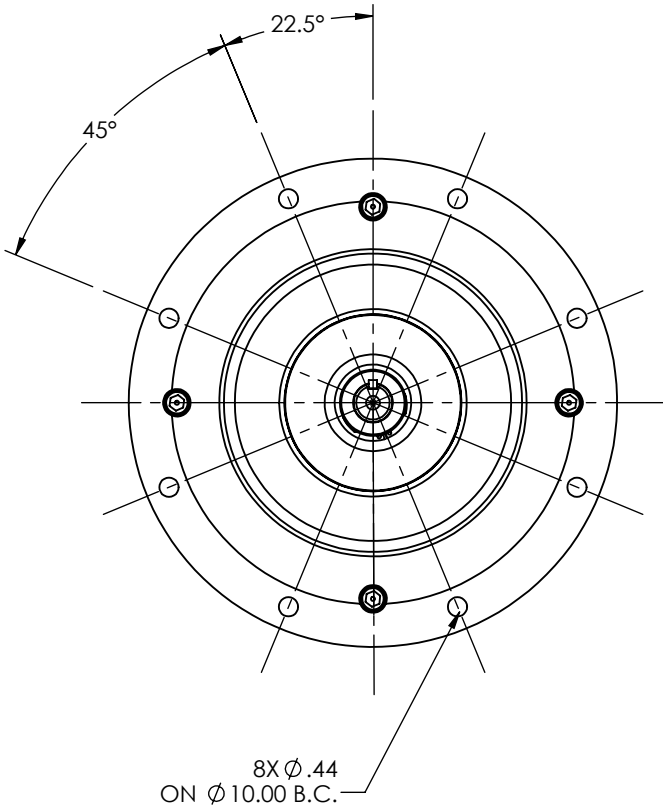
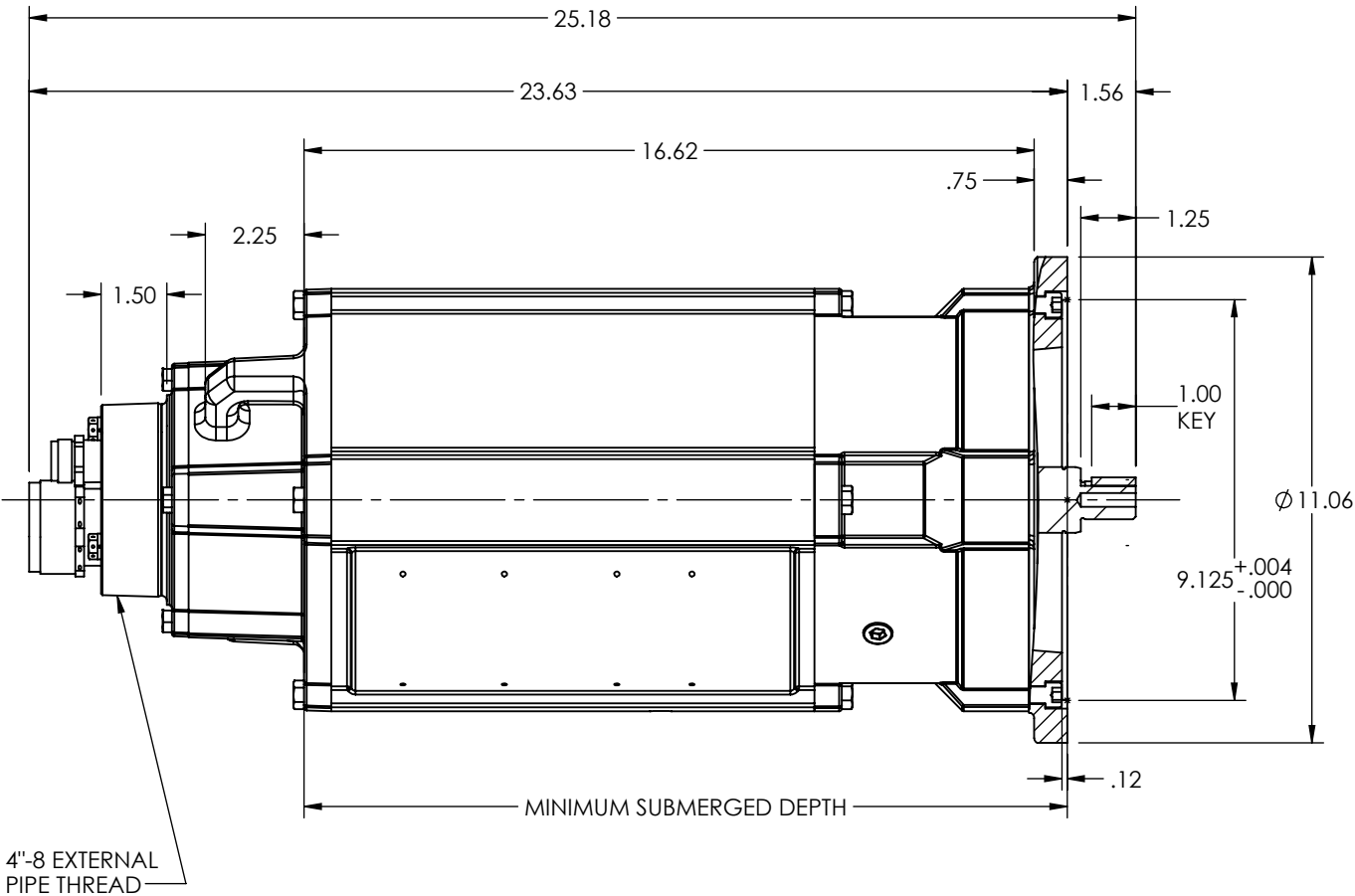
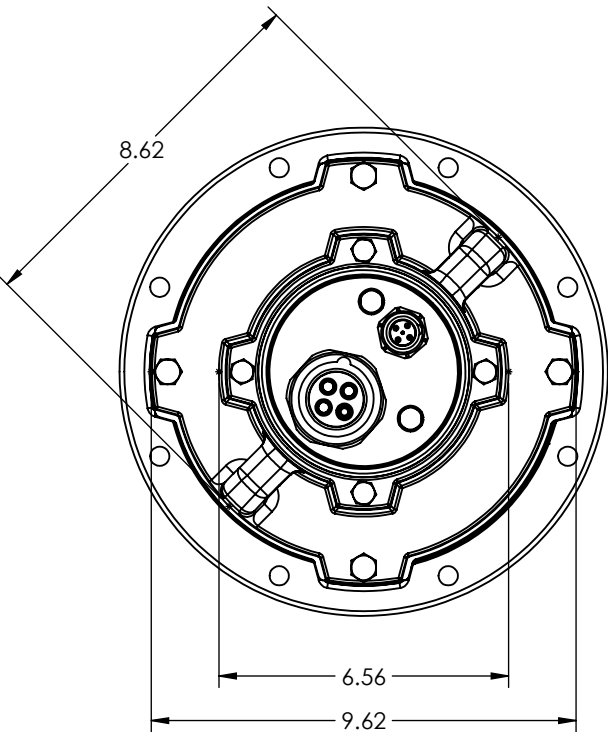


DUTY MASTER ALTERNATING CURRENT MOTORS

SQUIRREL-CAGE INDUCTION
ENCLOSURE: TOTALLY ENCLOSED

SUBMERSIBLE
ONE SIZE SMALLER SHAFT AND FLANGE

619738-002



SECTION A-A

- NOTES:
1. FACE RUNOUT AND ECCENTRICITY .008 MAX T.I.R.
 2. PROTECTIVE CONDUIT FURNISHED BY CUSTOMER
 3. WEIGHT (LBS): 200 \pm 15%
 4. PROVIDED WITH CABLE ONNECTOR TO LENGTH OF CABLE AS REQUESTED BY CUSTOMER

CUSTOMER IS RESPONSIBLE FOR DETERMINING THAT BALDOR'S PRODUCT WILL PERFORM SUITABLY IN THE INTENDED APPLICATION

| | | | |
|----------------------------|-------------|------------------------------|-------------------|
| REV. DESC: INITIAL RELEASE | | | |
| REV: - | VERSION: 00 | REVISED: 08:52:25 09/04/2020 | TDR: 000001147566 |
| MODEL NO. 619738-002 | | | REF: - |
| BY: RGGJAO | | | B |

BALDOR

DIM SHT 180TY SUB ONE SIZE SMALLER SH/FLNG WITH CABLE CONN.

619738-002