



Customer information packet

SUM20754

7.5HP, 1770RPM, 3PH, 60HZ, 210TY, TENV, V1

Class - None

Division - Not Applicable

Specifications

Enclosure	TENV
Frame	210TY
Frame Material	Iron
Frequency	60.00 Hz
Haz Area Class and Group	None
Haz Area Division	Not Applicable
Motor Letter Type	Three Phase
Phase	3
Agency Approvals	CCSA US
Base Indicator	Rigid
Bearing Grease Type	Polyrex EM (-20F +300F)
Cable Length	NO CABLE
Design Code	B
Drip Cover	No Drip Cover
Duty Rating	CONT
Heater Indicator	No Heater
Insulation Class	F
Inverter Code	Not Inverter
IP Rating	NONE
KVA Code	J
Lifting Lugs	Standard Lifting Lugs
Motor Standards	NEMA
Motor Type	M
Mounting Arrangement	V1
Number of Poles	4
Product Family	Pump - Centrifugal
Pulley End Bearing Type	Ball
Pulley Face Code	Standard
Service Factor	1.15
Shaft Diameter	1.437 IN
Shaft Rotation	Reversible
Shaft Slinger Indicator	No Slinger

Part detail

Revision	A
Type	AC
Mech. spec.	
Base	
Status	PRD/A
Elec. spec.	86000
Layout	619738-003
Eff. date	09-15-2021
CD Diagram	416820-001
Poles	///
Leads	
Proprietary	False
Created date	08-18-2021

Speed Code	Single Speed
Starting Method	Direct on line
Thermal Device - Winding	Normally Closed Thermostat

Nameplate

000613007MN

CAT NO	SUM20754	SPEC NO.	S21-CWS0-0019						
HP	7.5	AMPS	18.4/9.2	VOLTS	230/460	DESIGN	B		
FRAME SIZE	210TY	RPM	1770	HZ	60	AMB	40	SF	1.15
D.E. BRG.	60BC02JPP30A	PH	3	DUTY	15MIN	INSUL	F		
O.D.E. BRG.	30BC02JPG30A	TYPE	P	ENCL	TENV	CODE	J		
		POWER FACTOR		NEMA-NOM-EFF					
		MAX CORR KVAR		GUARANTEED EFFICIENCY					
		NEMA NOM/CSA QUOTED EFF @		100% LOAD					
SER.NO.		MOTOR WEIGHT	335	LBS.					
	FINAL CONN VOLTAGE = 230 ;SUB.								
	IN WATER ONLY								

000613007MR

CAT NO	SUM20754	SPEC NO.	S21-CWS0-0019						
HP	7.5	AMPS	18.4/9.2	VOLTS	230/460	DESIGN	B		
FRAME SIZE	210TY	RPM	1770	HZ	60	AMB	40	SF	1.15
D.E. BRG.	60BC02JPP30A	PH	3	DUTY	15MIN	INSUL	F		
O.D.E. BRG.	30BC02JPG30A	TYPE	P	ENCL	TENV	CODE	J		
		POWER FACTOR		NEMA-NOM-EFF					
		MAX CORR KVAR		GUARANTEED EFFICIENCY					
		NEMA NOM/CSA QUOTED EFF @		100% LOAD					
SER.NO.		MOTOR WEIGHT	335	LBS.					
	FINAL CONN VOLTAGE = 230 ;SUB.								
	IN WATER ONLY								

AC induction motor performance data

Record #86000 - Typical performance - not guaranteed values

Winding	07WGA0016
Type	0738M
Enclosure	PART

Nameplate data

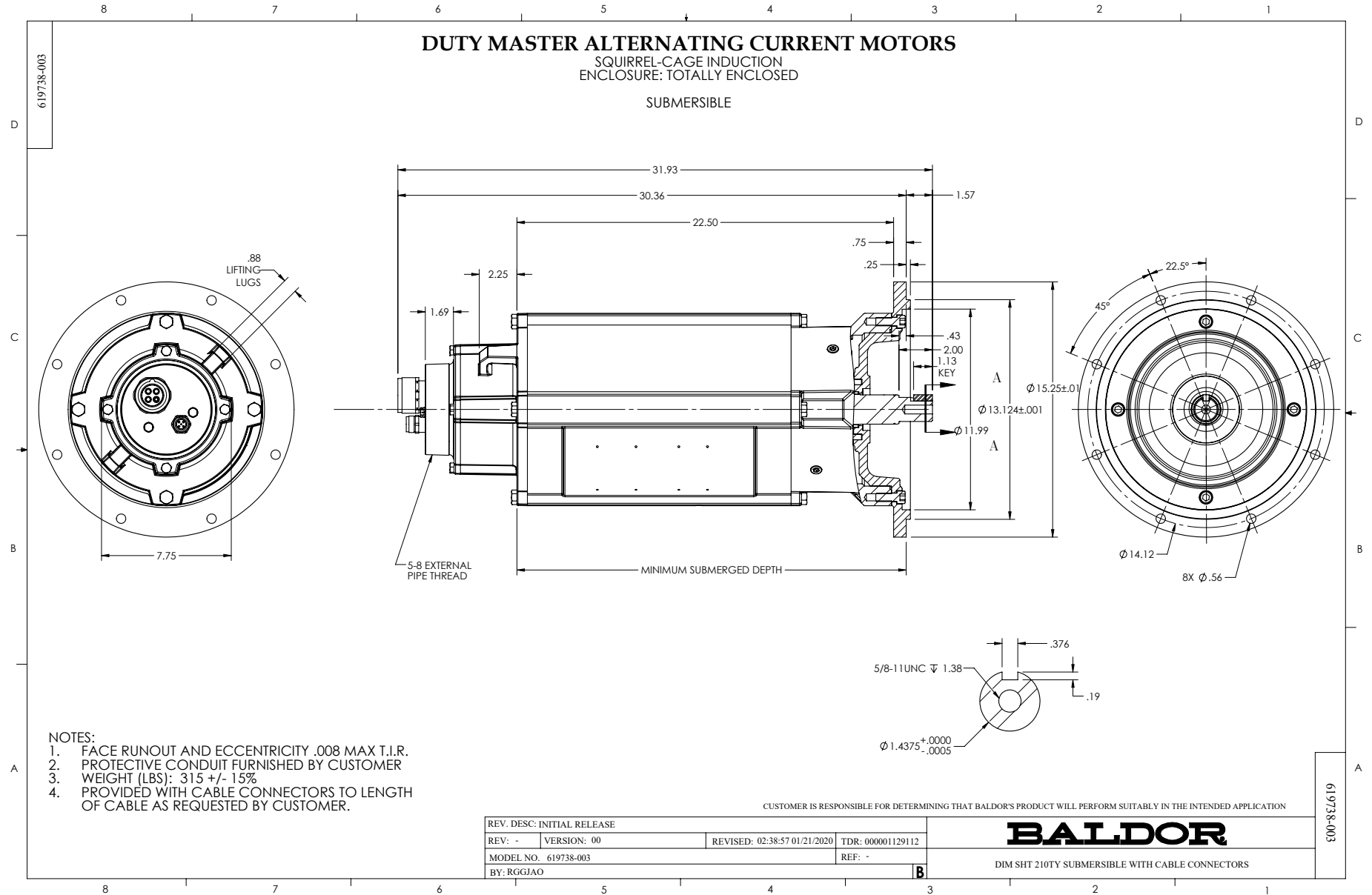
Rated Output			7.5
Volts			230/460
Full Load Amps			18.4/9.2
R.P.M.			1770
Hz	60	Phase	3
KVA Code			J
S.F.			1.15
NEMA Nom. Eff.	91	Power Factor	84
Duty			15 MIN
S.F. Amps			

**460 V, 60 Hz:
High Voltage Connection**

Full Load Torque	22.3 LB-FT
Start Configuration	direct on line
Breakdown Torque	66.73 LB-FT
Pull-up Torque	23.24 LB-FT
Locked-rotor Torque	35.06 LB-FT
Starting Current	69.17 A
No-load Current	3.51
Line-line Res. @ 25°C	1.5 Ω
Temp. Rise @ Rated Load	52°C
Temp. Rise @ S.F. Load	65°C
Locked-rotor Power Factor	36
Rotor inertia	0.934 lb-ft²

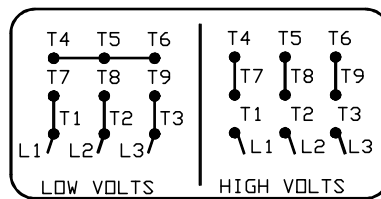
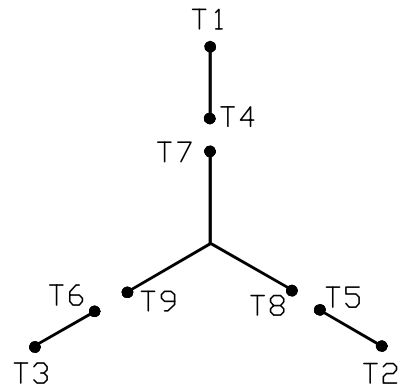
Load Characteristics 460 V, 60 Hz, 7.5 HP

% of Rated Load	NL	25	50	75	100	125	150	SF
Power Factor	7	49	70	79	84	85	85	85
Efficiency	0	87	90.4	91.7	91.1	90.6	89.3	90.8
Speed	1799	1793	1786	1779	1770	1762	1752	1765
Line amperes	3.51	4.15	5.52	7.26	9.24	11.4	13.85	10.5



416820-001

A-C MOTOR
 CONNECTION DIAGRAM
 STANDARD 9 LEAD Y CONNECTED



(N. P. 1575-A)

416820-001

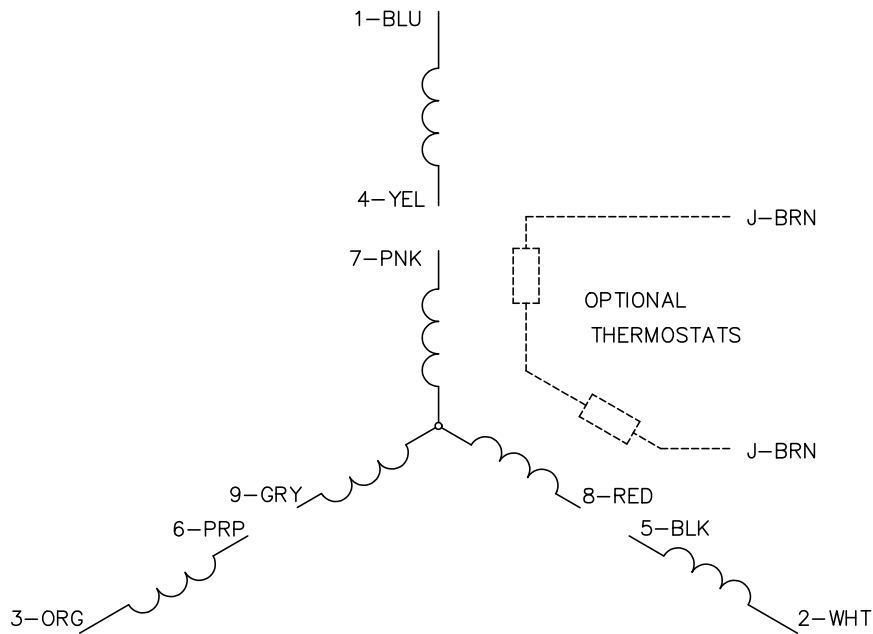
REV. DESC: FONT CHANGE FOR PDF SEARCHABLE		
REV. LTR: A	VERSION: 01	TDR: 000001009382
FILE: \MGA\00000\659	REVISED: 10: 33: 07 12/21/2016	BY: MGHMTT
MTL: -	© □	

BALDOR

CONN DIAG - STANDARD 9 LEAD, Y CONNECTED

SH 1 of 1

CD0005



LOW VOLTAGE
(2Y)



LINE

HIGH VOLTAGE
(1Y)



LINE

NOTES:

1. INTERCHANGE ANY TWO LINE LEADS TO REVERSE ROTATION.
2. OPTIONAL THERMOSTATS ARE PROVIDED WHEN SPECIFIED.
3. ACTUAL NUMBER OF INTERNAL PARALLEL CIRCUITS MAY BE A MULTIPLE OF THOSE SHOWN ABOVE.
4. LEAD COLORS ARE OPTIONAL. LEADS MUST ALWAYS BE NUMBERED AS SHOWN.

CD0005

REV. DESC: REVISE TO SHOW OPTIONAL COLORS			
REV. LTR: E	BY: JLP	REVISED: 01/19/99 10:15	TDR: 0171435
S00000		FILE: AAA00005140	MDL: -
		MTL: -	

BALDOR ELECTRIC Co.

3PH, DV, 9 LEADS