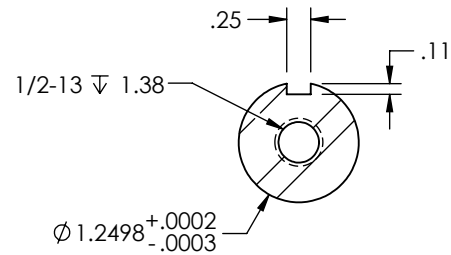
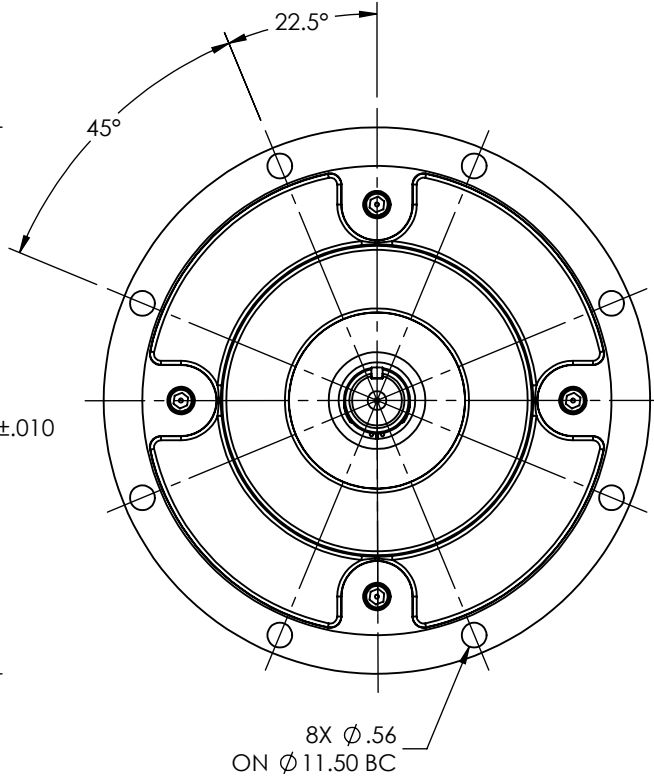
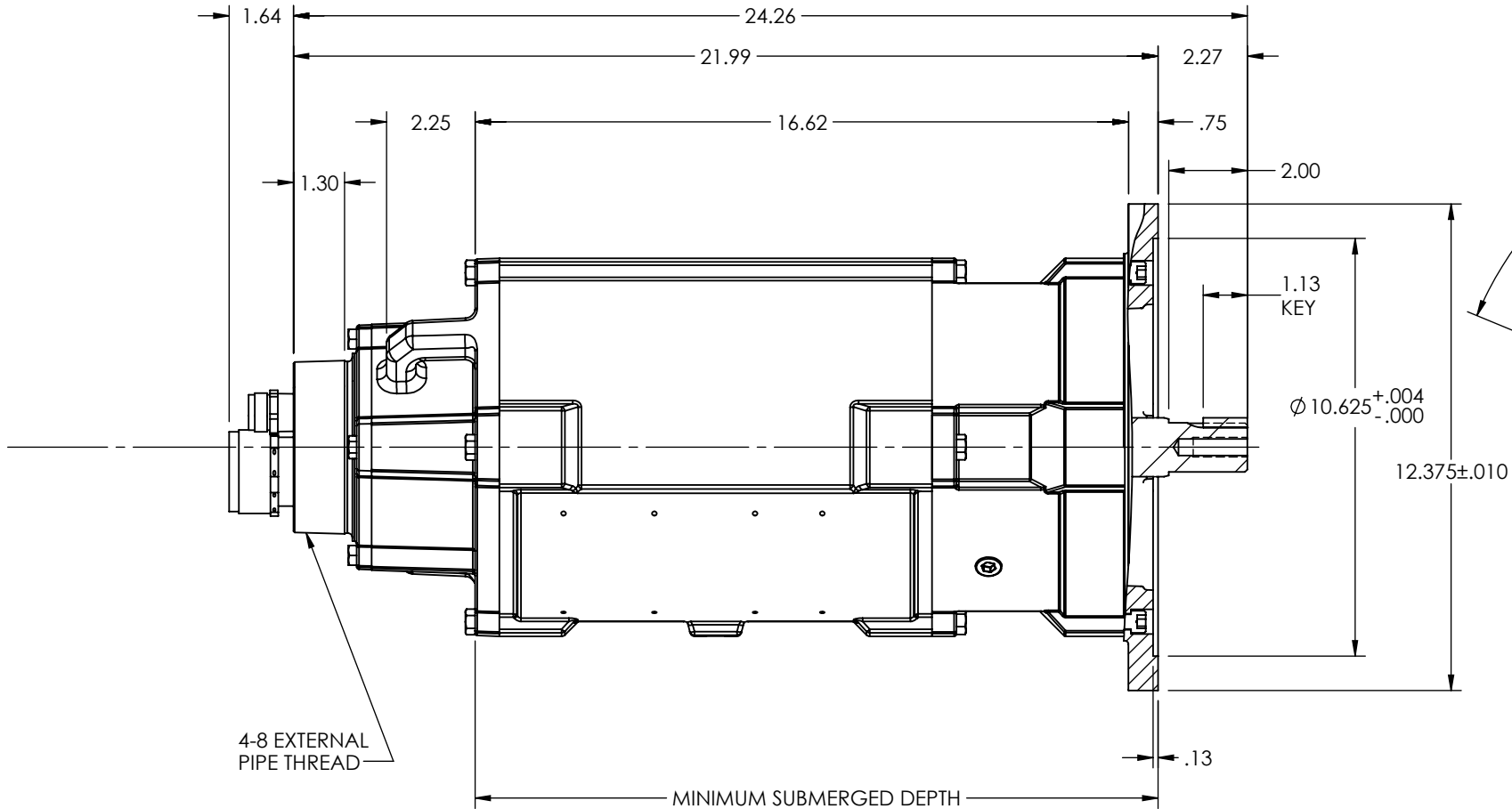
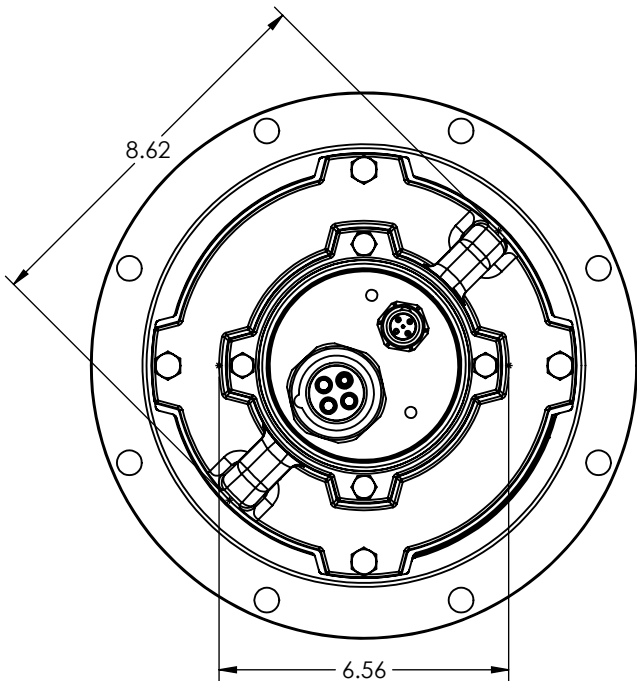


DUTY MASTER ALTERNATING CURRENT MOTOR
SQUIRREL-CAGE INDUCTION
ENCLOSURE: TOTALLY ENCLOSED

SUBMERSIBLE



SECTION A-A

- NOTES:
1. FACE RUNOUT AND ECCENTRICITY .008 MAX T.I.R.
 2. PROTECTIVE CONDUIT FURNISHED BY CUSTOMER
 3. WEIGHT (LBS.): 120
 4. PROVIDED WITH CABLE CONNECTOR TO LENGTH OF CABLE AS REQUESTED BY CUSTOMER

CUSTOMER IS RESPONSIBLE FOR DETERMINING THAT THE PRODUCT WILL PERFORM SUITABLY IN THE INTENDED APPLICATION

REV. DESC: MOVE FROM L/O 102 TO 018			
REV: A	VERSION: 01	REVISED: 11:37:24 03/08/2021	TDR: 000001160195
MODEL NO. 066930-700			REF: -
BY: USWATUR			B

BALDOR - RELIANCE®

DIM SHT 180TY STANDARD MOUNTING WITH CABLE CONNECTOR

066930-700

066930-700