

# **ABB BALDOR RELIANCE III**

---

## **Customer information packet** SSBSM50N-175CA

SSBSM50N-175CA

**Specifications**

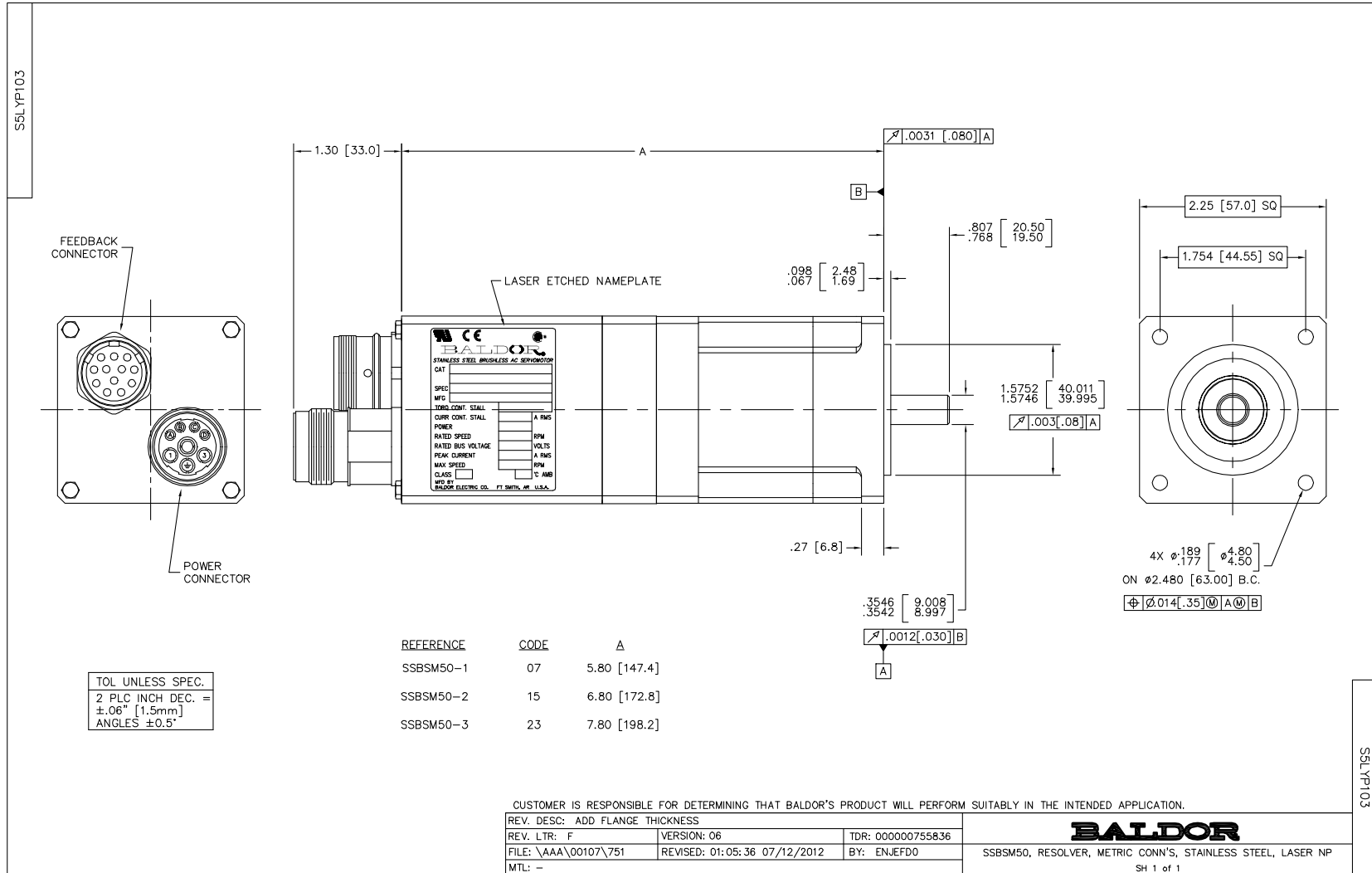
<b>Enclosure</b>	TENV
<b>Nameplate Speed</b>	4000
<b>Agency Approvals</b>	C UR US CE WEEE
<b>Base Indicator</b>	Bracket Mounted
<b>Dimensional Drawing Numbers</b>	S5LYP103
<b>Frame Material</b>	Exposed Laminations
<b>Motor Lead Quantity/Wire Size</b>	3 @ 18 AWG
<b>Motor Standards</b>	Other
<b>Mounting Arrangement</b>	F1
<b>Nameplate Output</b>	0.19KW
<b>Shaft Rotation</b>	Reversible

**Part Detail**

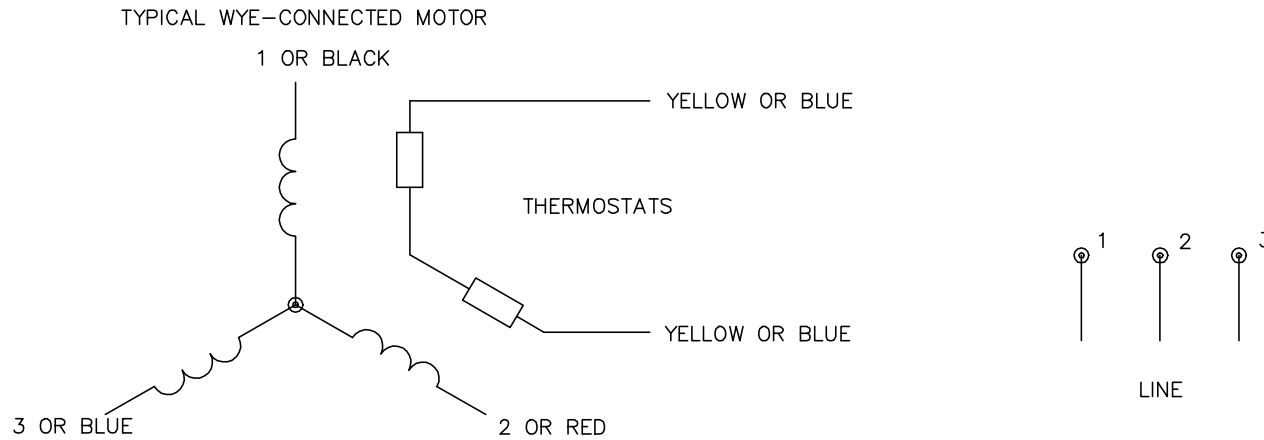
<b>Revision</b>	W
<b>Type</b>	AC
<b>Mech. spec.</b>	S5P103
<b>Base</b>	
<b>Status</b>	PRD/A
<b>Elec. spec.</b>	S5WGW025
<b>Layout</b>	S5LYP103
<b>Eff. date</b>	10-23-2025
<b>CD Diagram</b>	CD0006A02
<b>Poles</b>	04
<b>Leads</b>	3#18
<b>Proprietary</b>	False
<b>Created date</b>	01-19-2006

**Nameplate**

<b>NP4320</b>		
<b>CAT.NO.</b>		
<b>BLANK</b>	IP67 IC410 2KG	
<b>SPEC.</b>	S5P103W025	
<b>MFG.NO.</b>		
<b>TORQ CONT STALL</b>	0.45 NM	
<b>CUR CONT STALL/A RMS</b>	.7	
<b>POWER</b>	0.17KW	
<b>RATED SPEED/RPM</b>	4000	
<b>RATED BUS VOLTS</b>	320	
<b>PEAK CUR/A RMS</b>	2.81	
<b>MAX SPEED/RPM</b>	10000	
<b>CLASS</b>	F	<b>AMB.</b> 25
<b>APRV-CE</b>		



CD0006A02



NOTES:

1. INTERCHANGE ANY TWO LINE LEADS TO REVERSE ROTATION.
2. ACTUAL NUMBER OF INTERNAL PARALLEL CIRCUITS MAY VARY.

REV. DESC: REMOVED "OPTIONAL" FROM PRINT, SERVO REQ'S T'STATS		
REV. LTR: D	VERSION: 03	TDR: 000000414937
CD0006A02	FILE: \AAA\00068\606	REVISED: 10:02:28 11/21/2006
	MTL: -	BY: ENJFDO

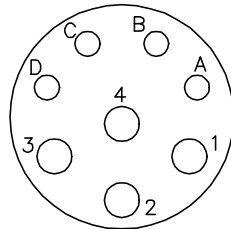
**BALDOR ELECTRIC Co.**

3PH, SV, 3 LEADS, WYE CONNECTED

CD0006A02

CD1808

8 PIN THREADED CONNECTOR  
(CRIMP STYLE)  
(INSERTION SIDE)



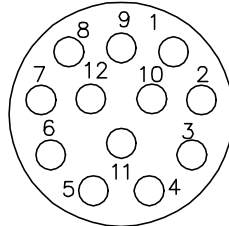
MOTOR CONNECTIONS

PIN	FUNCTION	INTERNAL WIRE COLOR
A	THERMAL SWITCH *	YELLOW
B	THERMAL SWITCH *	YELLOW
C	BRAKE *	BLACK (* RED)
D	BRAKE *	BLACK
1	U	BLACK OR T1
2	GROUND	GREEN OR **GREEN/YELLOW
3	W	BLUE OR T3
4	V	RED OR T2

\* WHEN REQUIRED

\*\*CE MOTORS REQUIRE GREEN/YELLOW GROUND

12 PIN THREADED CONNECTOR  
(CRIMP STYLE)  
(INSERTION SIDE)



RESOLVER CONNECTIONS

PIN	FUNCTION	INTERNAL WIRE COLOR
1	REF HI R1	RED/WHITE
2	REF LO R2	YELLOW/WHITE
3	COS+ S1	RED
4	COS- S3	BLACK
5	SINE+ S2	BLUE
6	SINE- S4	YELLOW
7	-	-
8	-	-
9	-	-
10	-	-
11	-	-
12	-	-

CD1808

REV. DESC: ADD CE NOTE AND GREEN/YELLOW GROUND

REV. LTR: B

VERSION: 02

TDR: 000001192301

FILE: \AAA\00117\633

REVISED: 02:38:03 06/13/2022

BY: ENDAND0

MTL: -



**BALDOR - RELIANCE®**

SSBSM - WIRING DIAG, POWER & RESOLVER, 8 & 12 PIN CONN'S

SH 1 of 1