



Customer information packet

SPM44302TS-4

300HP, 3570RPM, 3PH, 60HZ, L449TS, A44208M, TE

Class - CLI GP A,B,C,D; CLII GP F,G

Division - Division II

Specifications

Enclosure	TEFC
Frame	L449TS
Frame Material	Iron
Frequency	60.00 Hz
Haz Area Class and Group	CLI GP A,B,C,D; CLII GP F,G
Haz Area Division	Division II
Motor Letter Type	Three Phase
Output @ Frequency	300.000 HP @ 60 HZ
Phase	3
Synchronous Speed @ Frequency	3600 RPM @ 60 HZ
Voltage @ Frequency	460.0 V @ 60 HZ
Agency Approvals	CURUSEEV CCSAUSEEV NEMA PREMIUM
Ambient Temperature	40 °C
Auxillary Box	No Auxillary Box
Base Indicator	Rigid
Bearing Grease Type	Polyrex EM (-20F +300F)
Current @ Voltage	315.000 A @ 460.0 V
Design Code	B
Duty Rating	CONT
Efficiency @ 100% Load	96.2 %
Feedback Device	NO FEEDBACK
Frame Prefix	L
Heater Indicator	No Heater
High Voltage Full Load Amps	315.0 a
Insulation Class	F
Inverter Code	Inverter Ready
KVA Code	F
Lifting Lugs	Standard Lifting Lugs
Max Speed	4200 rpm
Motor Lead Quantity/Wire Size	6 @ 3/0 AWG

Part detail

Revision	-
Type	AC
Mech. spec.	
Base	
Status	PRD/A
Elec. spec.	A44WG5291
Layout	617439-226
Eff. date	01-22-2025
CD Diagram	416820-036
Poles	02
Leads	3#3/0 (02 per group)
Proprietary	False
Created date	12-18-2024

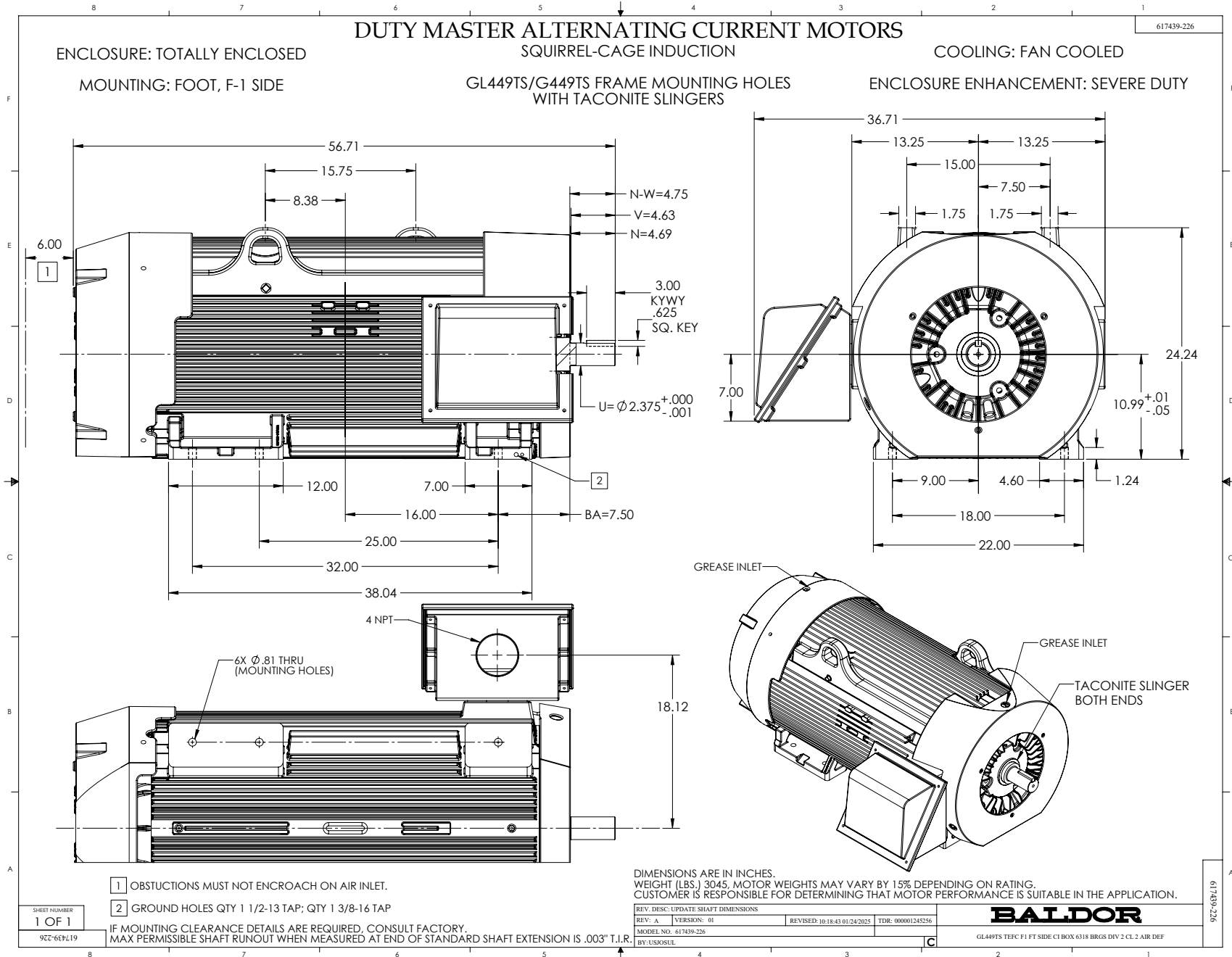
Motor Standards	NEMA
Motor Type	A44208M
Mounting Arrangement	F1
Number of Poles	2
Overall Length	56.71 IN
Power Factor	93
Product Family	General Industrial
Pulley End Bearing Type	Ball
Pulley Face Code	Standard
Service Factor	1.15
Shaft Diameter	2.375 IN
Shaft Ground Indicator	No Shaft Grounding
Shaft Rotation	Reversible
Shaft Slinger Indicator	Shaft Slinger
Speed	3570 rpm
Speed Code	Single Speed
Starting Method	Direct on line
Thermal Device - Bearing	None
Thermal Device - Winding	None

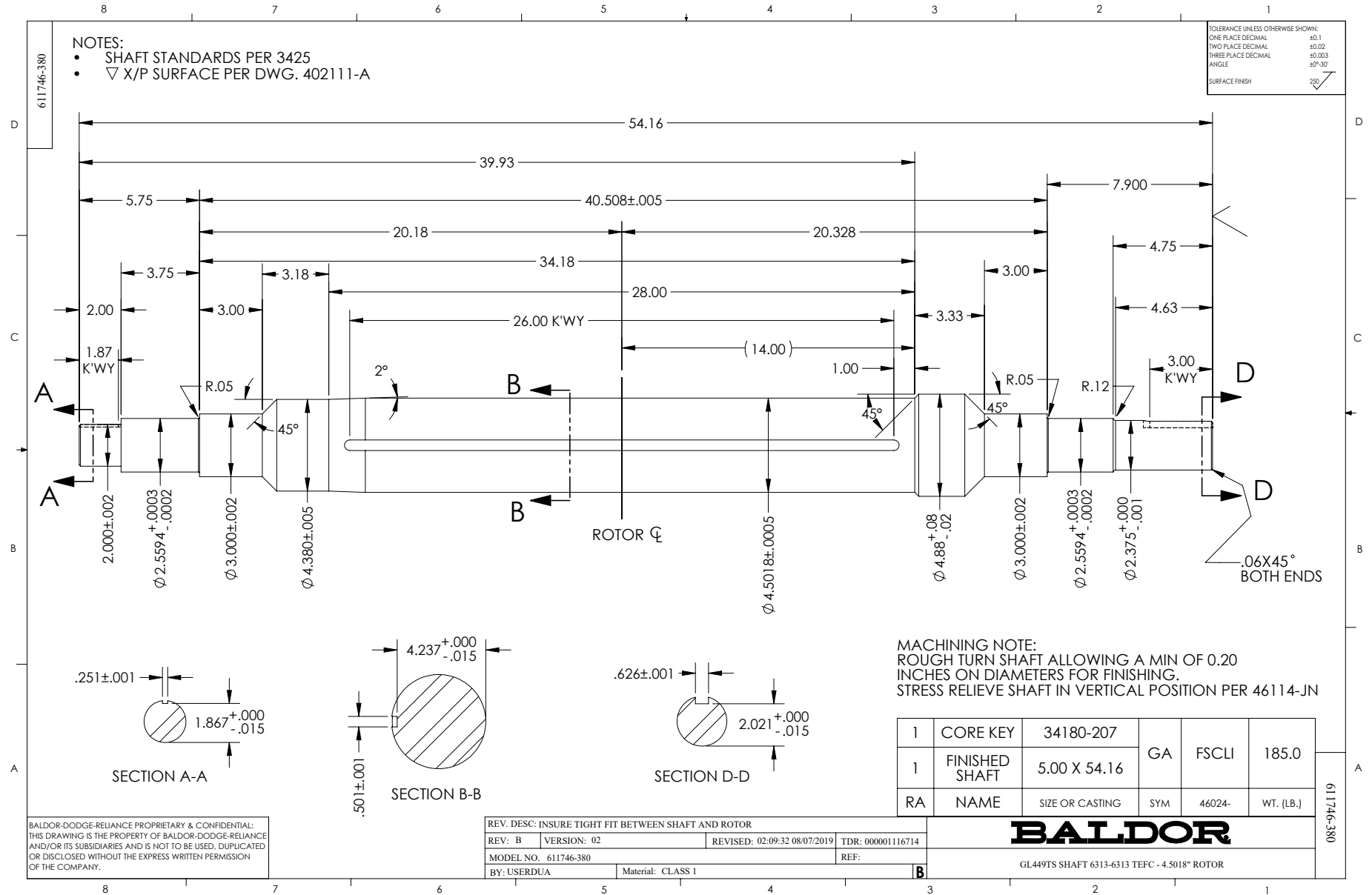
Nameplate

NP2496L
MOBIL POLYREX EM

NP4562L

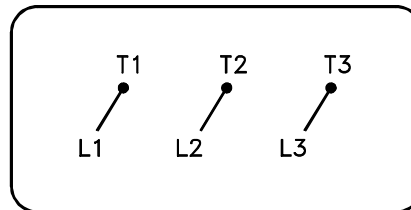
CAT NO	SPM44302TS-4		SPEC NO.	A44-5011-5291		I.P.	55							
HP	300	AMPS	315	VOLTS	460	DESIGN	B							
FRAME SIZE	L449TS	RPM	3570	MAX RPM	4200	HZ	60	AMB	40					
D.E. BRG.	65BC03J30X		PH.3	3	DUTY	CONT		INSUL.CLASS	F					
O.D.E. BRG.	65BC03J30X		TYPE P	P	ENCL	TEFC	SF	1.15	CODE	F				
POWER FACTOR	93	MAX CORR KVAR	16		NEMA NOM EFFICIENCY	96.2		MOTOR WEIGHT		LBS				
CL.I,DIV 2,GRP:	A,B,C,D	T.CODE	T2D		CL.1,ZONE 2,GRP:	IIA,IIB,IIC		T=	215	INVERTER T.CODE	T2B			
CL.II,DIV 2,GRP:	F,G	T.CODE	T3C		CL II ZONE 22 GRPS IIIB	T= 160		INVERTER T.CODE	T3C					
ID LOGO	INV TYPE:	VPWM	CT	30	TO	60	VT	3	TO	60	CHP	60	TO	70
ID LOGO	1.0 SF VPWM		WK2	52.4	LBFT2	SL HZ		0.44	MAG CUR	52.5				
SER.NO.			MEETS INTENT OF IEEE-45					FOR WEATHER PROTECTION						





416820-036

A-C MOTOR
CONNECTION DIAGRAM
STANDARD 3 LEAD CONNECTED



(N.P. 1575-BA)

416820-036

REV. DESC: LOADED TO BUS, C/R 335225		
REV. LTR: -	VERSION: 00	TDR: 000000538207
FILE: \MGA\00000\682	REVISED: 11:54:06 04/30/2010	
MTL: -	BY: RAGRA	

BALDOR

CONN DIAG - STANDARD 3 LEAD
SH 1 of 1