

DUTY MASTER ALTERNATING CURRENT MOTORS

617439-226

ENCLOSURE: TOTALLY ENCLOSED

SQUIRREL-CAGE INDUCTION

COOLING: FAN COOLED

MOUNTING: FOOT, F-1 SIDE

GL449TS/G449TS FRAME MOUNTING HOLES
WITH TACONITE SLINGERS

ENCLOSURE ENHANCEMENT: SEVERE DUTY

F

F

E

E

D

D

C

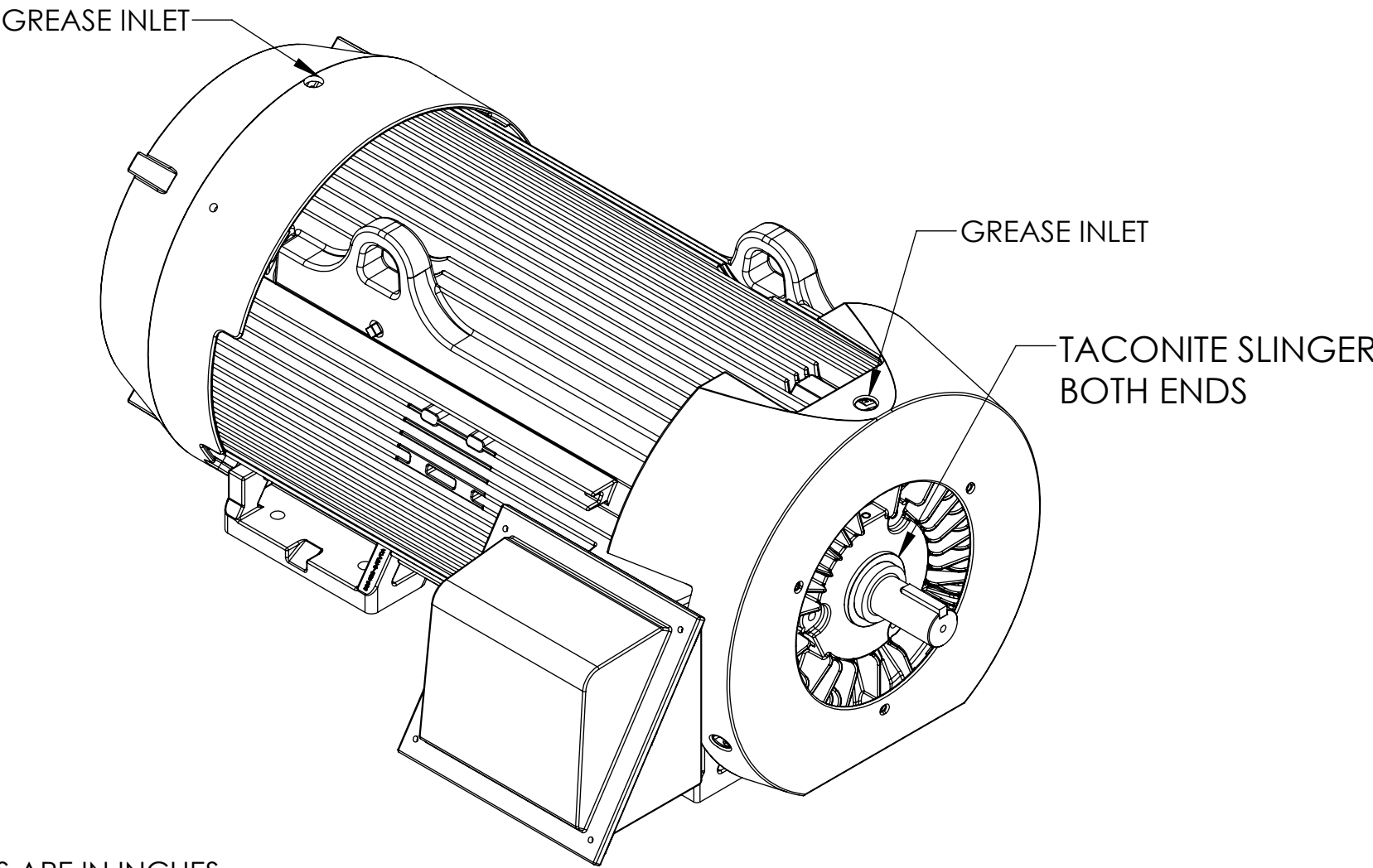
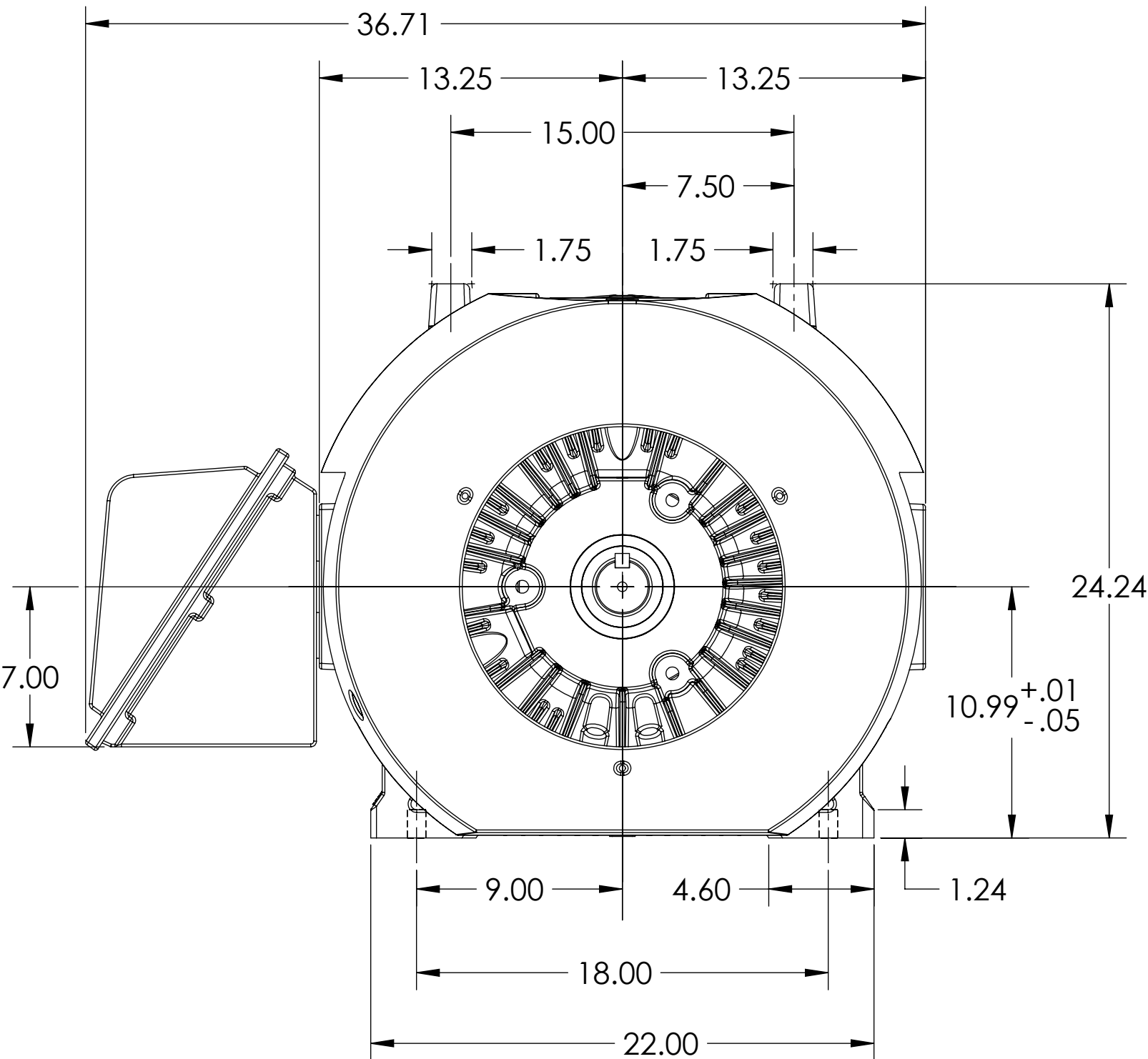
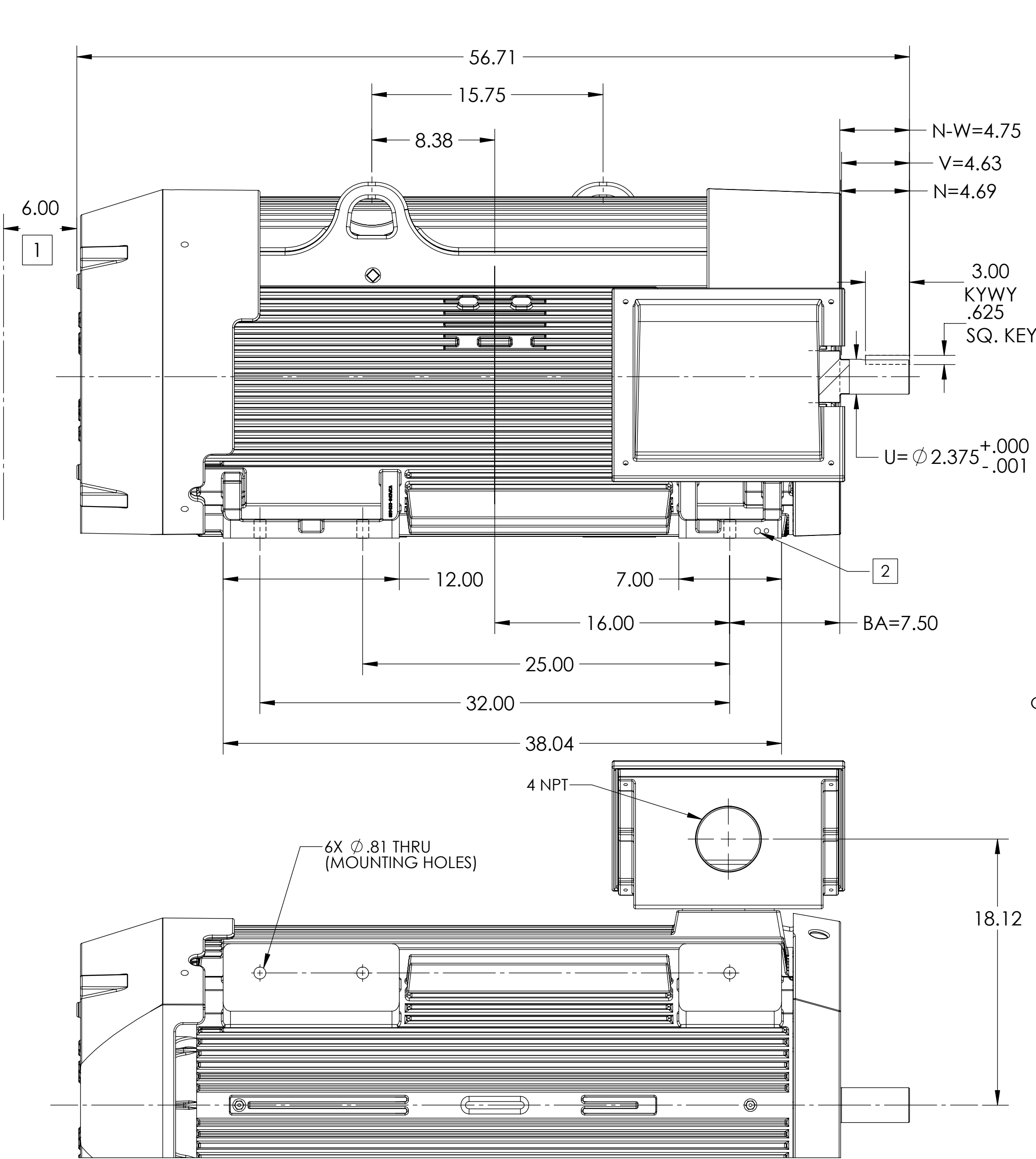
C

B

B

A

A



1 OBSTRUCTIONS MUST NOT ENCROACH ON AIR INLET.

2 GROUND HOLES QTY 1 1/2-13 TAP; QTY 1 3/8-16 TAP

IF MOUNTING CLEARANCE DETAILS ARE REQUIRED, CONSULT FACTORY.
MAX PERMISSIBLE SHAFT RUNOUT WHEN MEASURED AT END OF STANDARD SHAFT EXTENSION IS .003" T.I.R.

DIMENSIONS ARE IN INCHES.
WEIGHT (LBS.) 3045, MOTOR WEIGHTS MAY VARY BY 15% DEPENDING ON RATING.
CUSTOMER IS RESPONSIBLE FOR DETERMINING THAT MOTOR PERFORMANCE IS SUITABLE IN THE APPLICATION.

REV. DESC: UPDATE SHAFT DIMENSIONS			
REV: A	VERSION: 01	REVISED: 10:18:43 01/24/2025	TDR: 000001245256
MODEL NO. 617439-226			
BY: USJOSUL			

BALDOR

GL449TS TEFC F1 FT SIDE CI BOX 6318 BRGS DIV 2 CL 2 AIR DEF

SHEET NUMBER
1 OF 1

617439-226

617439-226