

DUTY MASTER ALTERNATING CURRENT MOTORS

SQUIRREL-CAGE INDUCTION

FRAME GL449T

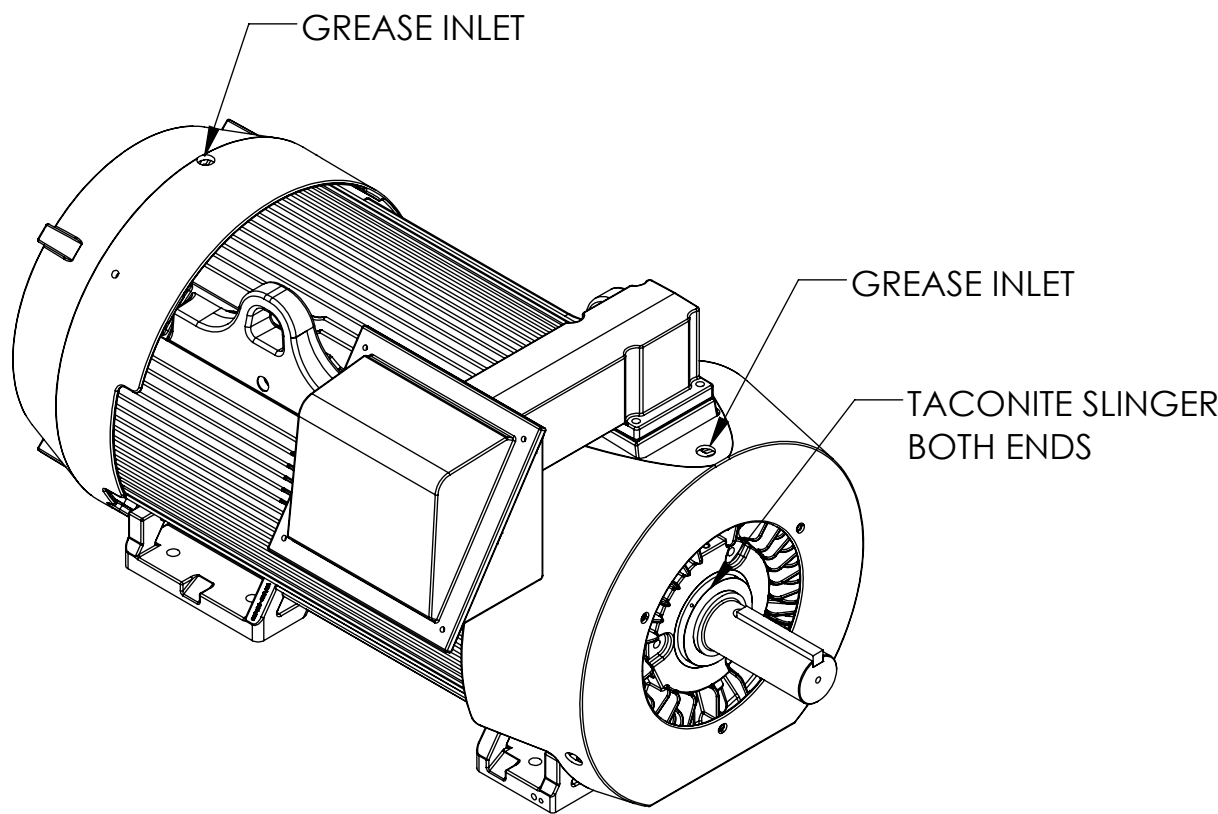
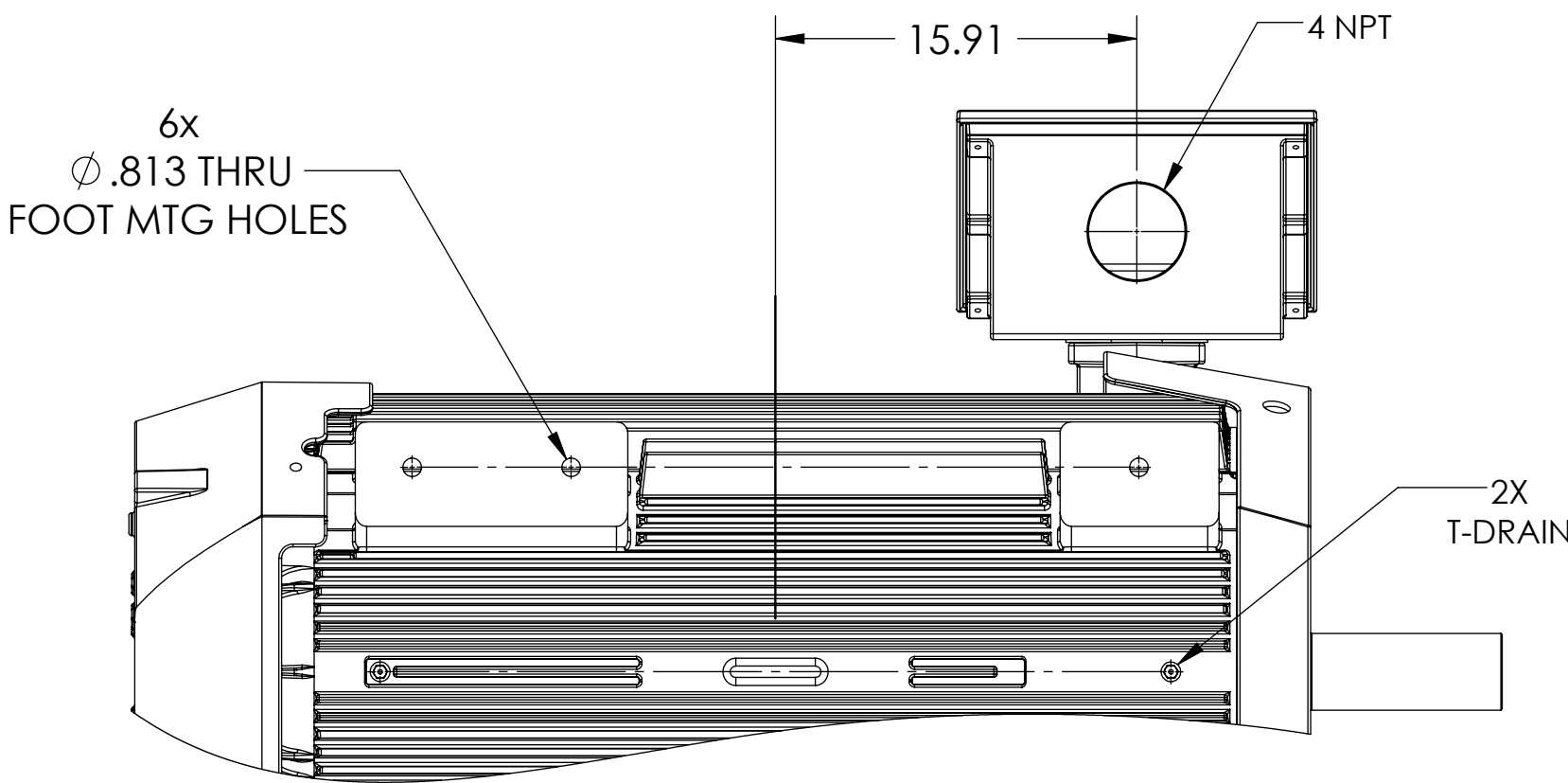
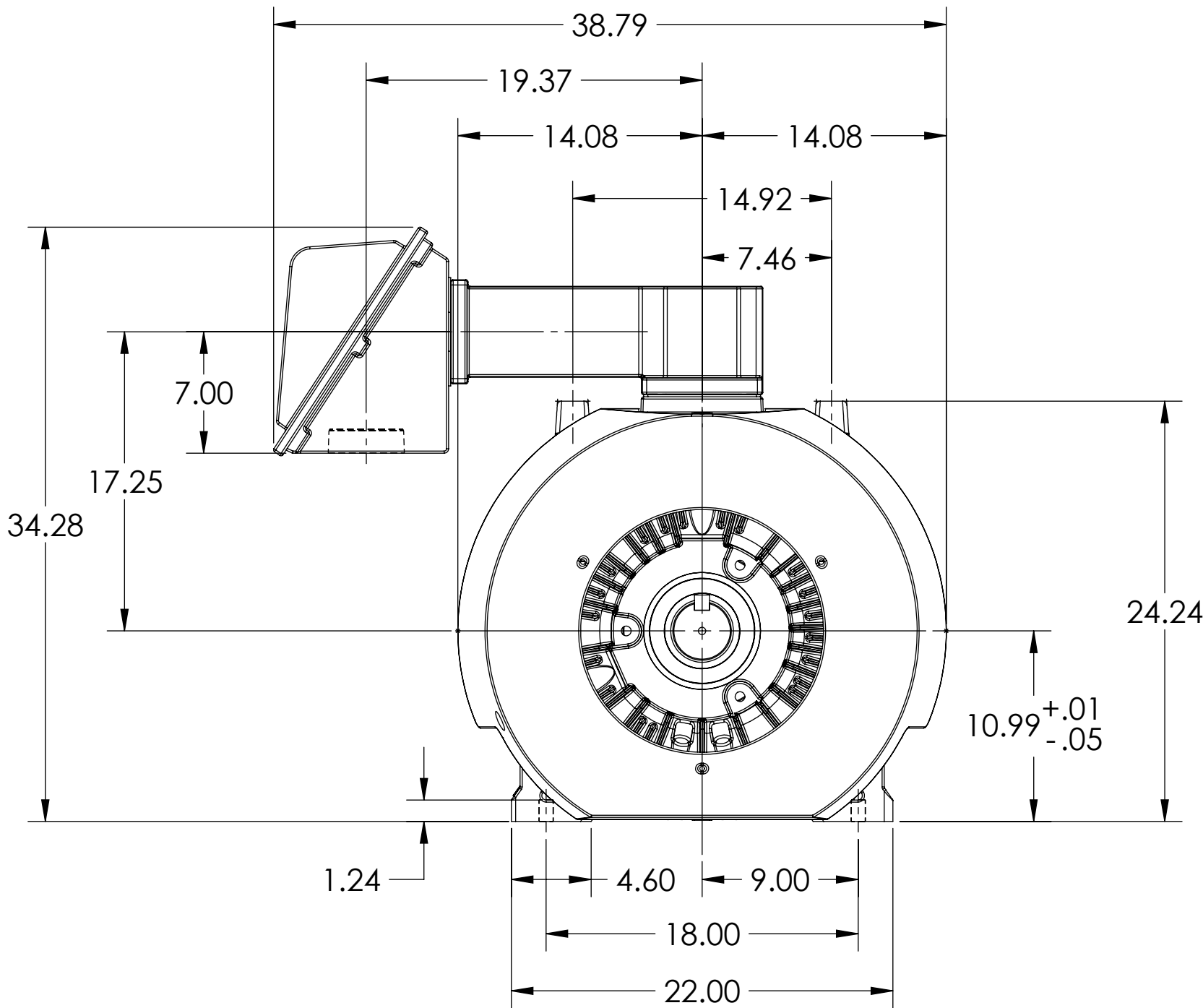
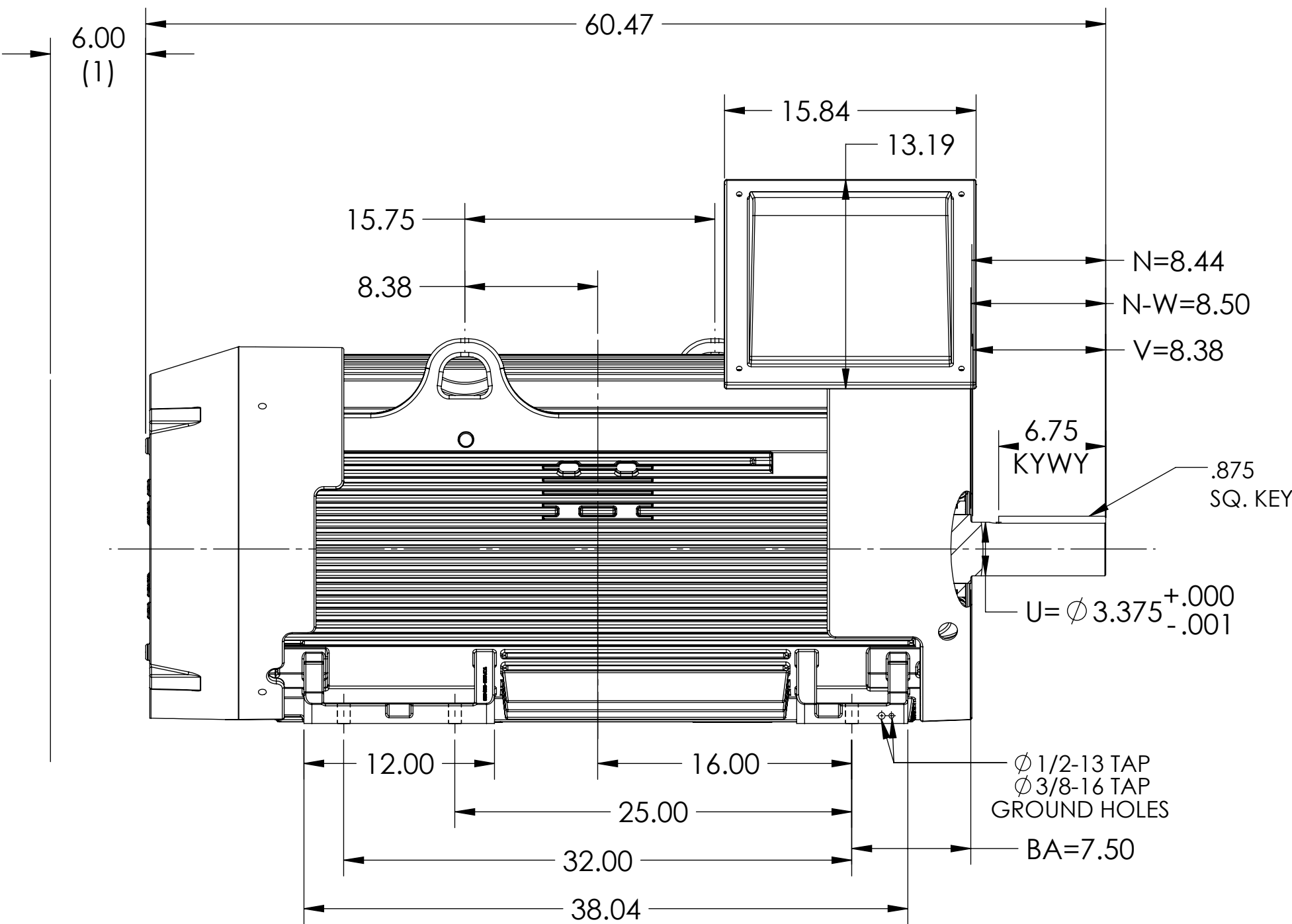
INCLUDE G449T FRAME MOUNTING HOLES
STD CAST IRON C/BOX, TOP DRIVE END
WITH TACONITE SLINGERS

COOLING: FAN COOLED

ENCLOSURE ENHANCEMENT: SEVERE DUTY

ENCLOSURE: TOTALLY ENCLOSED

MOUNTING: FOOT, F-1



1. OBSTRUCTION MUST NO ENCROACH ON AIR INLET.
2. MOTOR WEIGHT (LBS)=3850 \pm 15% DEPENDS ON RATING.
3. IF MOUNTING CLEARANCE DETAILS ARE REQUIRED, CONSULTFACTORY.
4. MAXIMUM PERMISSIBLE SHAFT RUNOUT WHEN MEASURED AT END OF STANDARD SHAFT EXTENSION IS .003 T.I.R.

DIMENSIONS ARE IN INCHES.

CUSTOMER IS RESPONSIBLE FOR DETERMINING THAT MOTOR PERFORMANCE IS SUITABLE IN THE APPLICATION.

REV. DESC: UPDATE SHAFT DIMENSIONS			
REV: A	VERSION: 01	REVISED: 02:38:52 11/25/2024	TDR: 000001245256
MODEL NO. 617439-185			
BY: USJOSUL			

BALDOR

GL449T TEFC F1 FT CI BOX ON LEAD THROAT DIV 2 CL 2 AIR DEF