

DUTY MASTER ALTERNATING CURRENT MOTORS
SQUIRREL-CAGE INDUCTION

617439-177

ENCLOSURE: TOTALLY ENCLOSED

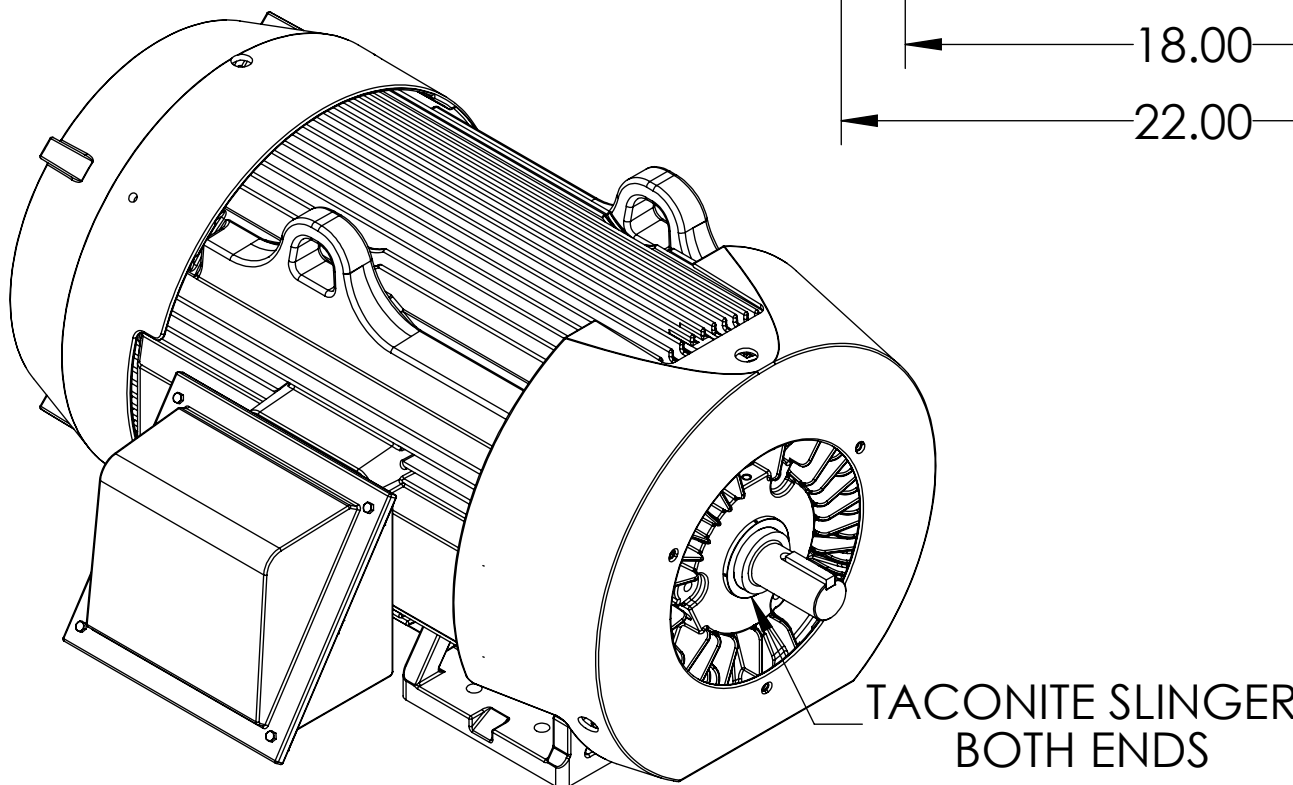
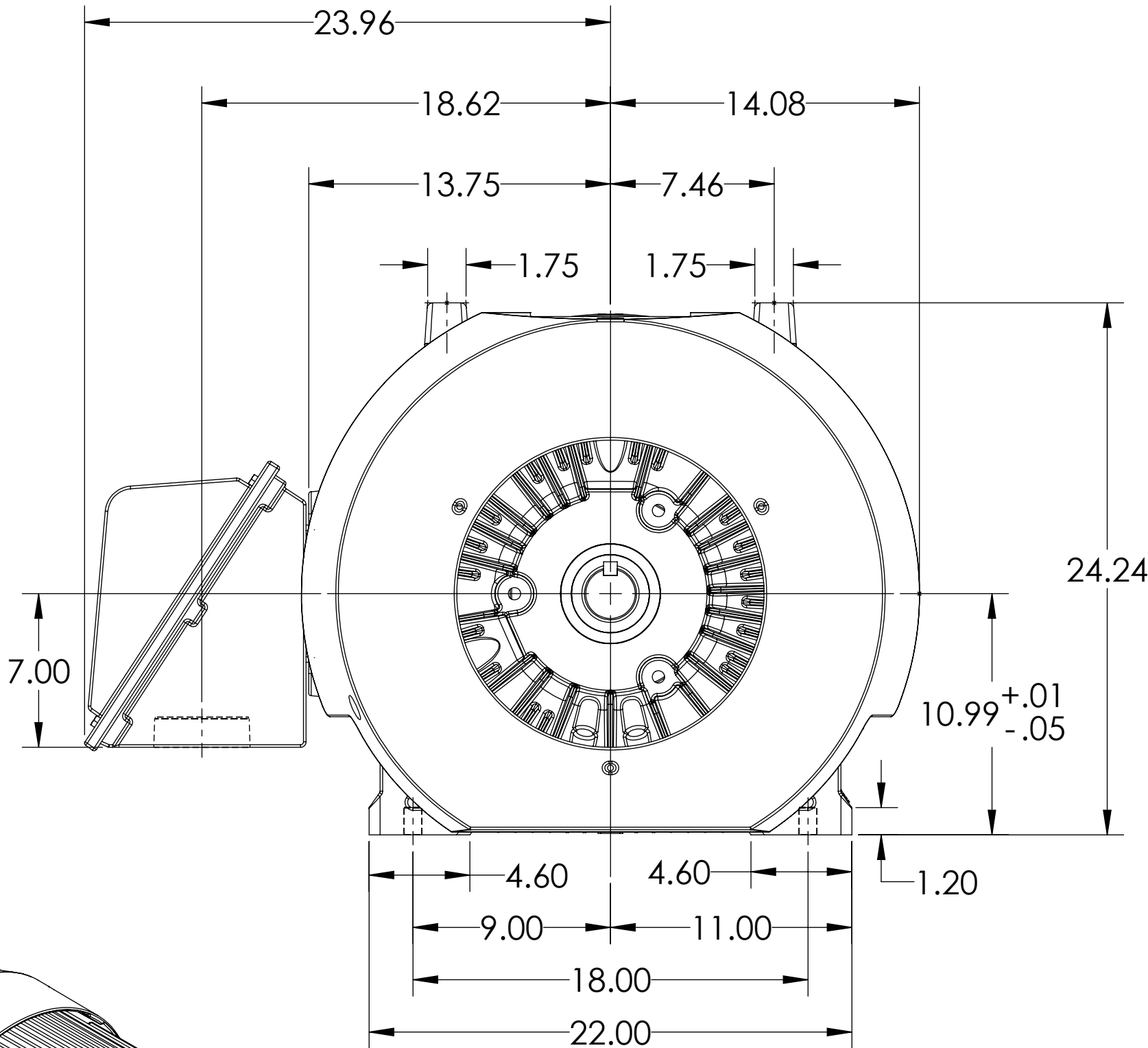
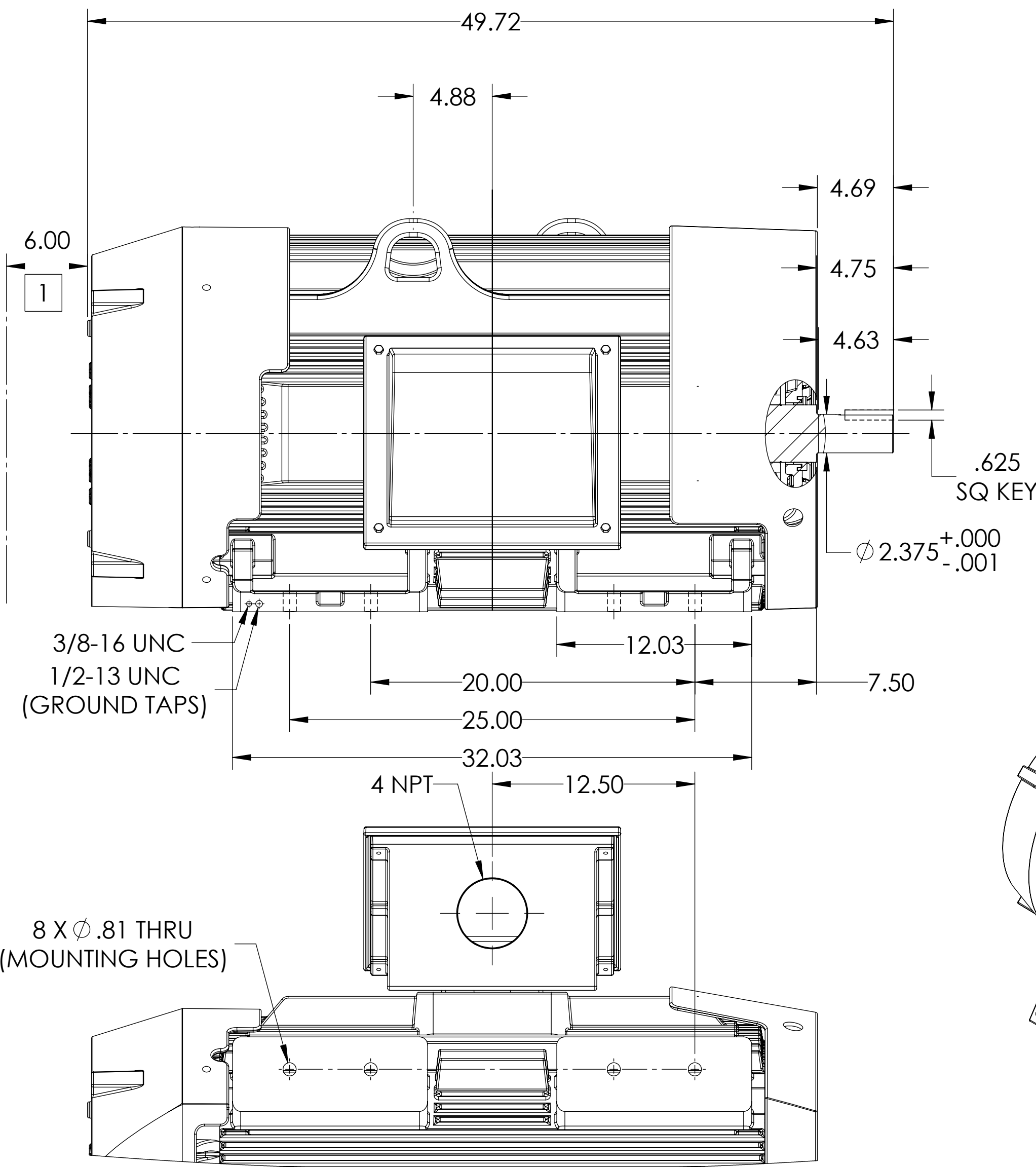
G449TS/G447TS FRAME MOUNTING HOLES

COOLING: FAN COOLED

MOUNTING: FOOT, F-1 SIDE

TACONITE SLINGERS

ENCLOSURE ENHANCEMENT: SEVERE
DUTY



DIMENSIONS ARE IN INCHES.
WEIGHT (LBS.) 3045, MOTOR WEIGHTS MAY VARY BY 15% DEPENDING ON RATING.
CUSTOMER IS RESPONSIBLE FOR DETERMINING THAT MOTOR PERFORMANCE IS SUITABLE IN THE APPLICATION.

SHEET NUMBER
1 OF 1

617439-177

1 OBSTRUCTION MUST NOT ENCROACH ON AIR INLET.

IF MOUNTING CLEARANCE DETAILS ARE REQUIRED, CONSULT FACTORY.
MAX PERMISSIBLE SHAFT RUNOUT WHEN MEASURED AT END OF STANDARD SHAFT EXTENSION IS .003" T.I.R.

REV. DESC: UPDATE DRAWING DESC.			
REV: A	VERSION: 01	REVISED: 01:07:36 11/22/2024	TDR: 000001245255
MODEL NO. 617439-177			
BY: USJOSUL		C	

BALDOR

G449TS/447TS TEFC F1 FT CI BOX DIV 2 CL 2 AIR DEFLECTOR

617439-177