



Customer information packet

SPM44206T-4

200HP, 1190RPM, 3PH, 60HZ, L449T, A44208M, TEF

Class - CLI GP A,B,C,D; CLII GP F,G

Division - Division II

Specifications

Enclosure	TEFC
Frame	L449T
Frame Material	Iron
Frequency	60.00 Hz
Haz Area Class and Group	CLI GP A,B,C,D; CLII GP F,G
Haz Area Division	Division II
Motor Letter Type	Three Phase
Output @ Frequency	200.000 HP @ 60 HZ
Phase	3
Synchronous Speed @ Frequency	1200 RPM @ 60 HZ
Voltage @ Frequency	460.0 V @ 60 HZ
Agency Approvals	CURUSEEV CCSAUSEEV NEMA PREMIUM
Ambient Temperature	40 °C
Auxillary Box	No Auxillary Box
Base Indicator	Rigid
Bearing Grease Type	Polyrex EM (-20F +300F)
Current @ Voltage	229.000 A @ 460.0 V
Design Code	B
Duty Rating	CONT
Efficiency @ 100% Load	96.2 %
Feedback Device	NO FEEDBACK
Frame Prefix	L
Heater Indicator	No Heater
High Voltage Full Load Amps	229.0 a
Insulation Class	F
Inverter Code	Inverter Duty
KVA Code	J
Lifting Lugs	Standard Lifting Lugs
Max Speed	1800 rpm
Motor Lead Quantity/Wire Size	6 @ 1 AWG

Part detail

Revision	D
Type	AC
Mech. spec.	
Base	
Status	PRD/A
Elec. spec.	A44WG6772
Layout	617439-179
Eff. date	01-24-2025
CD Diagram	416820-036
Poles	06
Leads	3#1 (02 per group)
Proprietary	False
Created date	10-31-2023

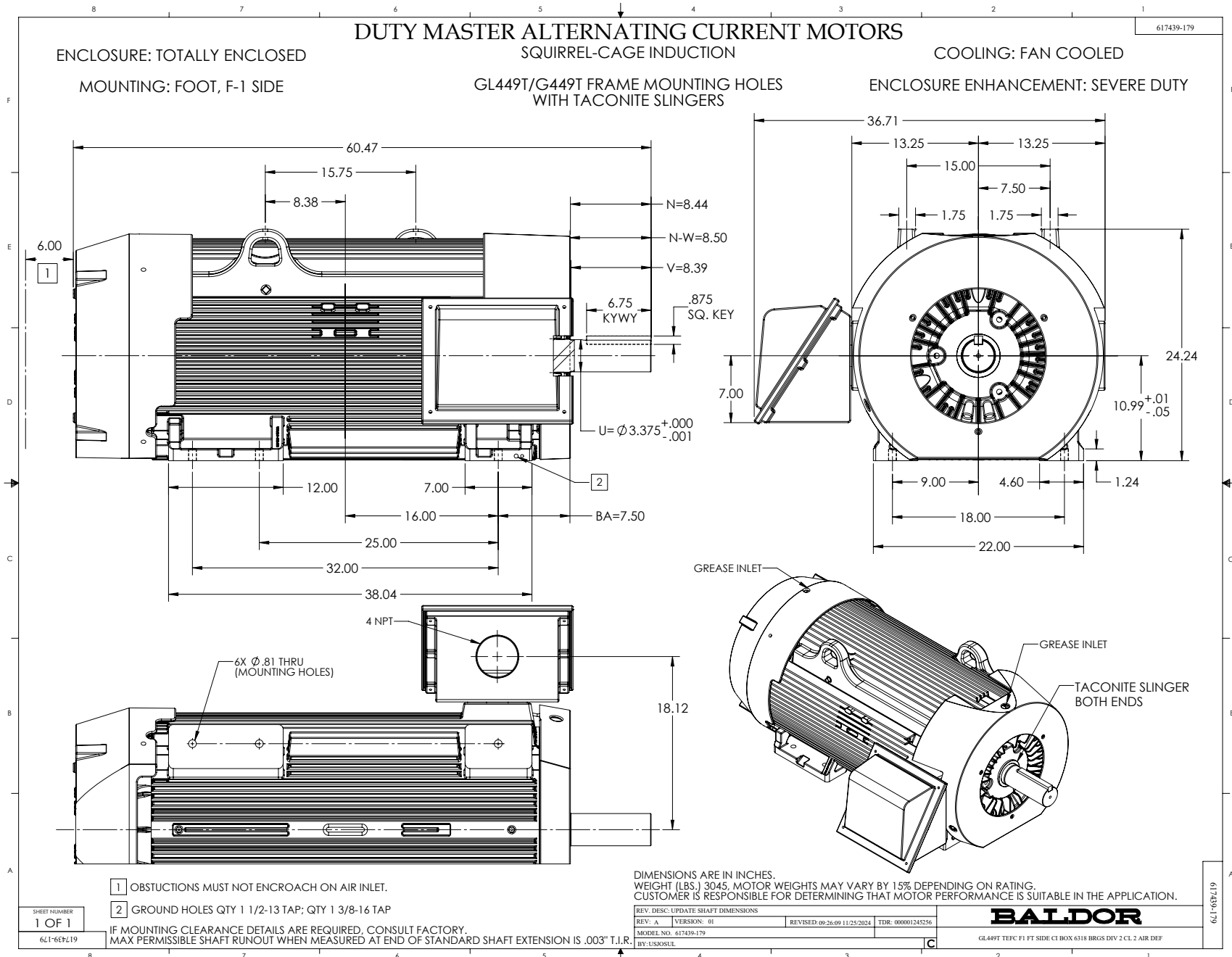
Motor Standards	NEMA
Motor Type	A44208M
Mounting Arrangement	F1
Number of Poles	6
Overall Length	60.35 IN
Power Factor	85
Product Family	General Industrial
Pulley End Bearing Type	Ball
Pulley Face Code	Standard
Service Factor	1.15
Shaft Diameter	3.375 IN
Shaft Ground Indicator	No Shaft Grounding
Shaft Rotation	Reversible
Shaft Slinger Indicator	Shaft Slinger
Speed	1190 rpm
Speed Code	Single Speed
Starting Method	Direct on line
Thermal Device - Bearing	None
Thermal Device - Winding	None

Nameplate

NP2496L
MOBIL POLYREX EM

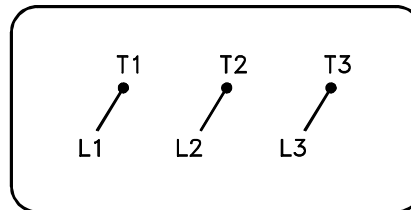
NP4562L

CAT NO	SPM44206T-4		SPEC NO.	A44-5000-6772		I.P.	55							
HP	200	AMPS	229	VOLTS	460	DESIGN	A							
FRAME SIZE	L449T	RPM	1190	MAX RPM	1800	HZ	60	AMB	40					
D.E. BRG.	90BC03J30X		PH.3	3	DUTY	CONT		INSUL.CLASS	F					
O.D.E. BRG.	90BC03J30X		TYPE P	P	ENCL	TEFC	SF	1.15	CODE	J				
POWER FACTOR	85	MAX CORR KVAR	35	NEMA NOM EFFICIENCY	96.2		MOTOR WEIGHT	LBS						
CL.I,DIV 2,GRP:	A,B,C,D	T.CODE	T3C	CL.1,ZONE 2,GRP:	IIA,IIB,IIC		T=	160	INVERTER T.CODE	T3				
CL.II,DIV 2,GRP:	F,G	T.CODE	T3C	CL II ZONE 22 GRPS IIIB	T= 160		INVERTER T.CODE	T3C						
ID LOGO	INV TYPE:	VPWM	CT	30	TO	60	VT	3	TO	60	CHP	60	TO	90
ID LOGO	1.0 SF VPWM		WK2	188.1	LBFT2	SL HZ	0.5	MAG CUR	89					
SER.NO.				MEETS INTENT OF IEEE-45				FOR WEATHER PROTECTION						



416820-036

A-C MOTOR
CONNECTION DIAGRAM
STANDARD 3 LEAD CONNECTED



(N.P. 1575-BA)

416820-036

REV. DESC: LOADED TO BUS, C/R 335225		
REV. LTR: -	VERSION: 00	TDR: 000000538207
FILE: \MGA\00000\682	REVISED: 11:54:06 04/30/2010	
MTL: -	BY: RAGRA	

BALDOR

CONN DIAG - STANDARD 3 LEAD
SH 1 of 1