



Customer information packet

SPM4313TS

75HP, 3555RPM, 3PH, 60HZ, 365TS, A36068M, TEFC

Class - CLI GP A,B,C,D; CLII GP F,G

Division - Division II

Specifications

Enclosure	TEFC
Frame	365TS
Frame Material	Iron
Frequency	60.00 Hz
Haz Area Class and Group	CLI GP A,B,C,D; CLII GP F,G
Haz Area Division	Division II
Motor Letter Type	Three Phase
Output @ Frequency	75.000 HP @ 60 HZ
Phase	3
Synchronous Speed @ Frequency	3600 RPM @ 60 HZ
Voltage @ Frequency	230.0 V @ 60 HZ 460.0 V @ 60 HZ
Agency Approvals	CCSAUSEEV CURUSEEV NEMA PREMIUM NEMA_PREMIUM
Ambient Temperature	40 °C
Auxillary Box	No Auxillary Box
Base Indicator	Rigid
Bearing Grease Type	Polyrex EM (-20F +300F)
Current @ Voltage	161.000 A @ 230.0 V 80.700 A @ 460.0 V
Design Code	B
Drip Cover	No Drip Cover
Duty Rating	CONT
Efficiency @ 100% Load	95.0 %
Feedback Device	NO FEEDBACK
Heater Indicator	No Heater
High Voltage Full Load Amps	80.7 a
Insulation Class	F
Inverter Code	Inverter Duty
KVA Code	G

Part detail

Revision	C
Type	AC
Mech. spec.	
Base	
Status	PRD/A
Elec. spec.	A36WG1545
Layout	617438-415
Eff. date	12-11-2024
CD Diagram	416820-002
Poles	02
Leads	3#2,6#4
Proprietary	False
Created date	10-05-2023

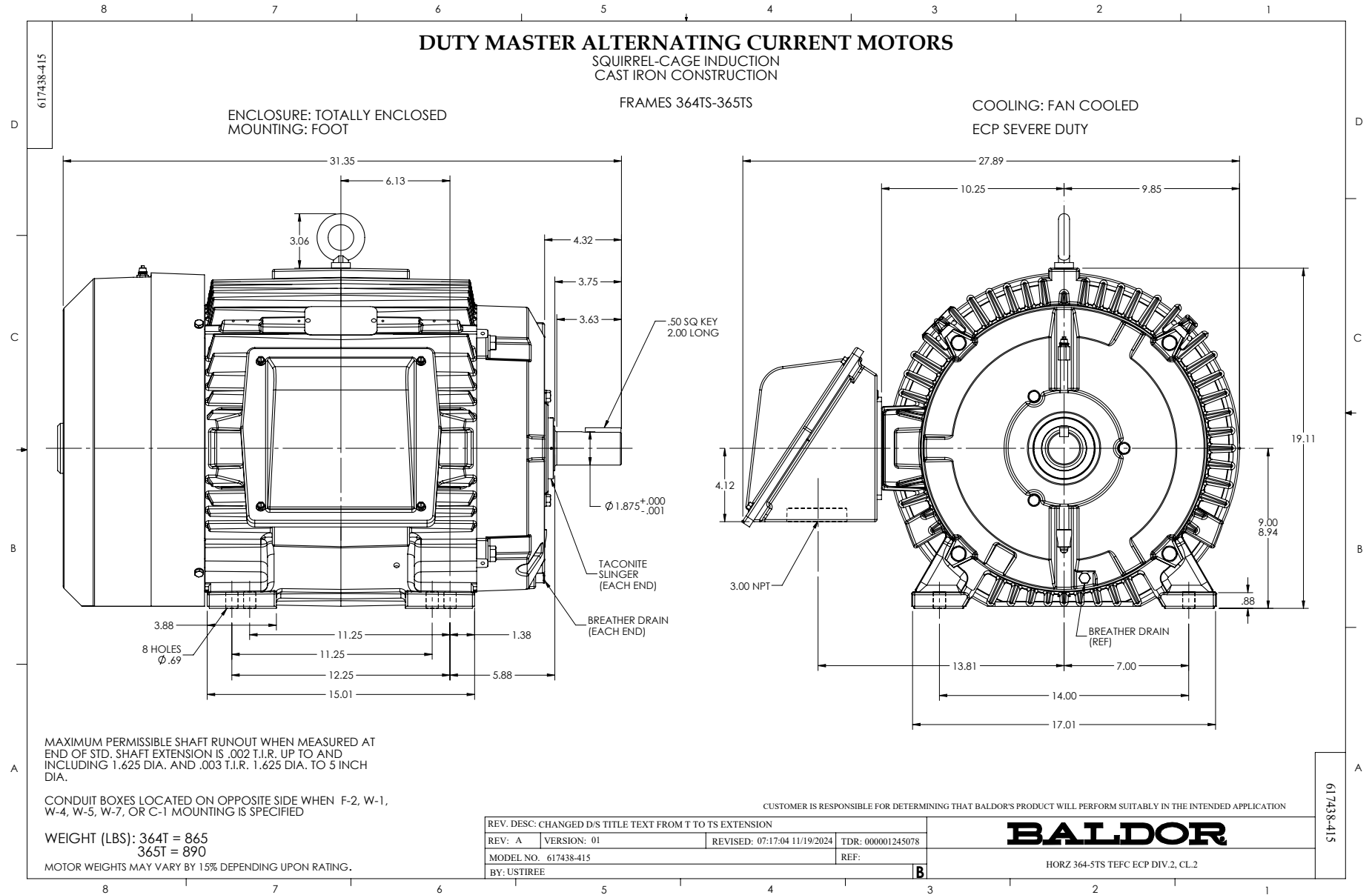
Lifting Lugs	Standard Lifting Lugs
Max Speed	4200 rpm
Motor Lead Quantity/Wire Size	3 @ 2 AWG
Motor Standards	NEMA
Motor Type	A36068M
Mounting Arrangement	F1
Number of Poles	2
Overall Length	31.35 IN
Power Factor	91
Product Family	General Industrial
Pulley End Bearing Type	Ball
Pulley Face Code	Standard
Service Factor	1.00
Shaft Diameter	1.875 IN
Shaft Ground Indicator	No Shaft Grounding
Shaft Rotation	Reversible
Shaft Slinger Indicator	Shaft Slinger
Speed	3555 rpm
Speed Code	Single Speed
Starting Method	Direct on line
Thermal Device - Bearing	None
Thermal Device - Winding	None

Nameplate

NP2496L
MOBILE POLYREX EM

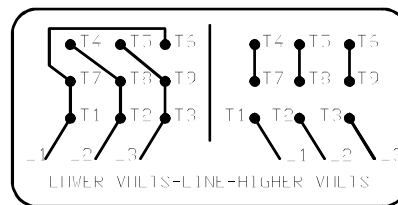
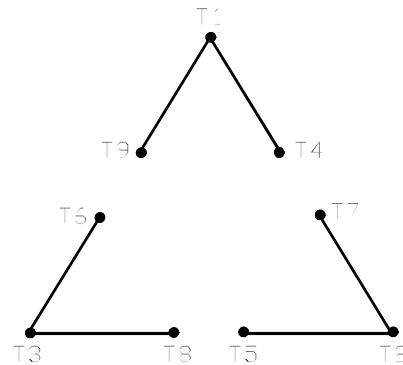
NP4562L

CAT NO	SPM4313TS	SPEC NO.	A36-0003-1545		I.P.	55	
HP	75	AMPS	161/80.7		VOLTS	230/460	
FRAME SIZE	365TS	RPM	3555		MAX RPM	4200	HZ 60
D.E. BRG.	65BC03J30X	PH.3	3	DUTY	CONT		INSUL.CLASS F
O.D.E. BRG.	65BC03J30X	TYPE P	P	ENCL	TEFC	SF 1.15	CODE G
POWER FACTOR	91	MAX CORR KVAR	5		NEMA NOM EFFICIENCY	95	
CL.I,DIV 2,GRP:	A,B,C,D	T.CODE	T3		CL.1,ZONE 2,GRP:	IIA,IIB,IIC	T= 200
CL.II,DIV 2,GRP:	F,G	T.CODE	T3C		CL II ZONE 22 GRPS IIIB	T= 160	INVERTER T.CODE T3
ID LOGO	INV TYPE:	VPWM	CT 15	TO 60	VT 3	TO 60	CHP 60 TO 70
ID LOGO	1.0 SF VPWM	WK2	8.642	LBFT2	SL HZ 0.75	MAG CUR	31/15.5
SER.NO.		MEETS INTENT OF IEEE-45			FOR WEATHER PROTECTION		



416820-002

A-C MOTOR
 CONNECTION DIAGRAM
 STANDARD 9 LEAD DELTA-CONNECTED



(N.P. 1575-B)

416820-002

REV. DESC: FONT CHANGE FOR PDF SEARCHABLE		
REV. LTR: A	VERSION: 01	TDR: 000001009382
FILE: \MGA\00000\661	REVISED: 02:46:19 02/13/2020	BY: MGHMTT
MTL: -	© □	

BALDOR - RELIANCE®

CONN DIAG - STANDARD 9 LEAD, DELTA-CONNECTED

SH 1 of 1