



Customer information packet

SPM4310TS

60HP, 3555RPM, 3PH, 60HZ, 364TS, A36056M, TEFC

Class - CLI GP A,B,C,D; CLII GP F,G

Division - Division II

Specifications

Enclosure	TEFC
Frame	364TS
Frame Material	Iron
Frequency	60.00 Hz
Haz Area Class and Group	CLI GP A,B,C,D; CLII GP F,G
Haz Area Division	Division II
Motor Letter Type	Three Phase
Output @ Frequency	60.000 HP @ 60 HZ
Phase	3
Synchronous Speed @ Frequency	3600 RPM @ 60 HZ
Voltage @ Frequency	230.0 V @ 60 HZ 460.0 V @ 60 HZ
Agency Approvals	CCSAUSEEV CURUSEEV NEMA PREMIUM NEMA_PREMIUM
Ambient Temperature	40 °C
Auxillary Box	No Auxillary Box
Base Indicator	Rigid
Bearing Grease Type	Polyrex EM (-20F +300F)
Current @ Voltage	65.400 A @ 460.0 V 145.000 A @ 208.0 V 131.000 A @ 230.0 V
Design Code	B
Drip Cover	No Drip Cover
Duty Rating	CONT
Efficiency @ 100% Load	94.5 %
Feedback Device	NO FEEDBACK
Heater Indicator	No Heater
High Voltage Full Load Amps	65.4 a
Insulation Class	F
Inverter Code	Inverter Duty

Part detail

Revision	E
Type	AC
Mech. spec.	
Base	
Status	PRD/A
Elec. spec.	A36WGO224
Layout	617438-415
Eff. date	12-11-2024
CD Diagram	416820-002
Poles	02
Leads	3#4,6#6
Proprietary	False
Created date	09-20-2023

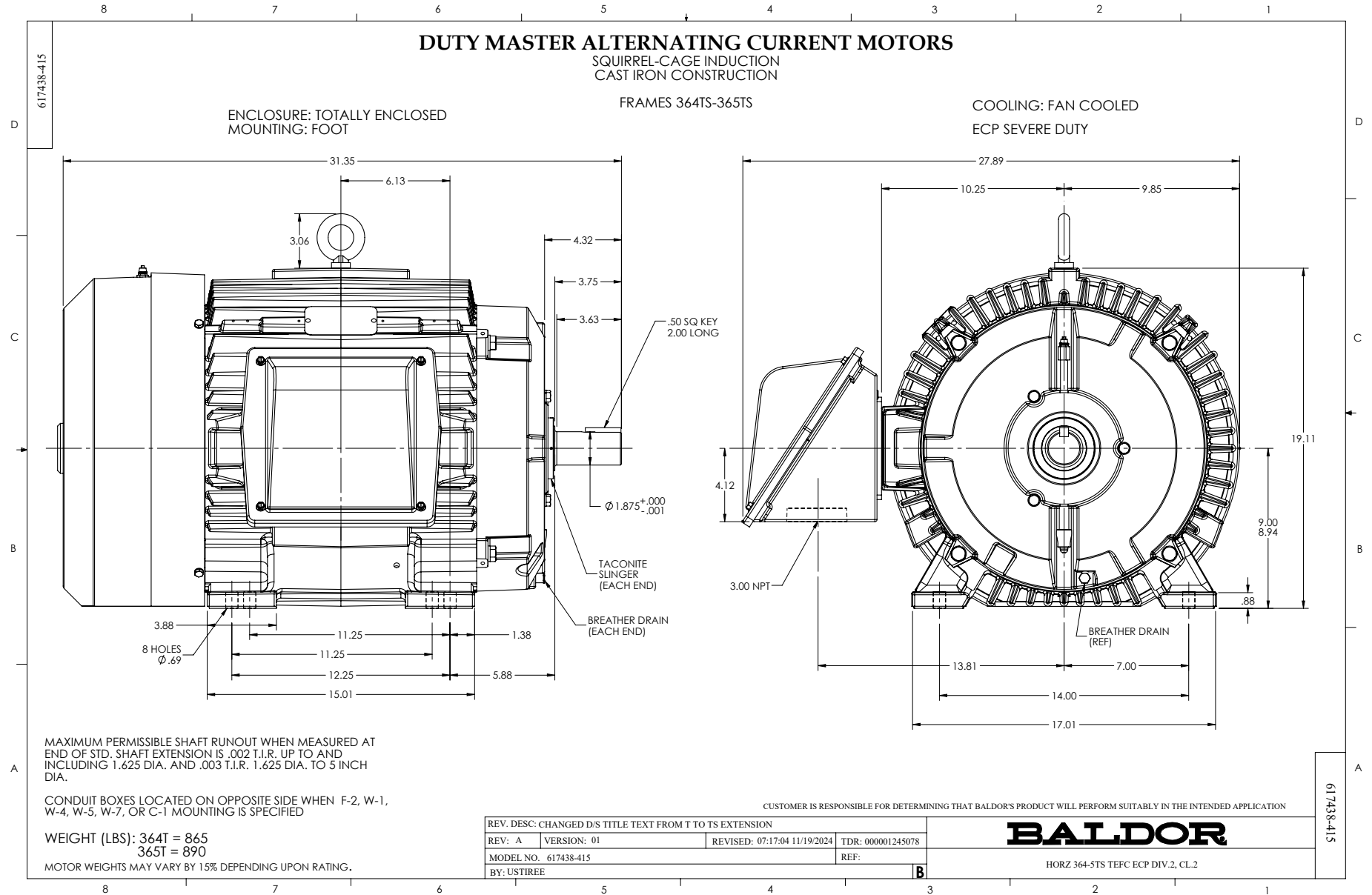
KVA Code	G
Lifting Lugs	Standard Lifting Lugs
Max Speed	4200 rpm
Motor Lead Quantity/Wire Size	3 @ 4 AWG
Motor Standards	NEMA
Motor Type	A36056M
Mounting Arrangement	F1
Number of Poles	2
Overall Length	31.35 IN
Power Factor	91
Product Family	General Industrial
Pulley End Bearing Type	Ball
Pulley Face Code	Standard
Service Factor	1.15
Shaft Diameter	1.875 IN
Shaft Ground Indicator	No Shaft Grounding
Shaft Rotation	Reversible
Shaft Slinger Indicator	Shaft Slinger
Speed	3555 rpm
Speed Code	Single Speed
Starting Method	Direct on line
Thermal Device - Bearing	None
Thermal Device - Winding	None

Nameplate

NP2496L
MOBILE POLYREX EM

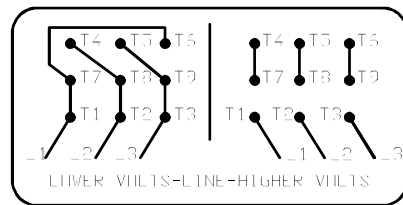
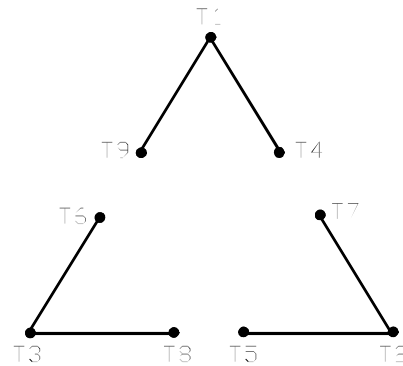
NP4562L

CAT NO	SPM4310TS	SPEC NO.	A36-0003-0224		I.P.	55	
HP	60	AMPS	131/65.4		VOLTS	230/460	
FRAME SIZE	364TS	RPM	3555		MAX RPM	4200	HZ 60
D.E. BRG.	65BC03J30X		PH.3	3	DUTY	CONT	
O.D.E. BRG.	65BC03J30X		TYPE P	P	ENCL	TEFC	SF 1.15
POWER FACTOR	91	MAX CORR KVAR	5		NEMA NOM EFFICIENCY	94.5	
CL.I,DIV 2,GRP:	A,B,C,D	T.CODE	T3		CL.1,ZONE 2,GRP:	IIA,IIB,IIC	T= 200
CL.II,DIV 2,GRP:	F,G	T.CODE	T3C		CL II ZONE 22 GRPS IIIB	T=	160
ID LOGO	INV TYPE:	VPWM	CT	15	TO	60	VT 3
ID LOGO	1.0 SF VPWM	WK2		LBFT2	SL HZ	0.75	
SER.NO.				MEETS INTENT OF IEEE-45		FOR WEATHER PROTECTION	
						CHP	60
						TO	70
						MAG CUR	28.2/14.1
						INVERTER T.CODE	T3
						MOTOR WEIGHT	892
						LBS	



416820-002

A-C MOTOR
 CONNECTION DIAGRAM
 STANDARD 9 LEAD DELTA-CONNECTED



(N.P. 1575-B)

416820-002

REV. DESC: FONT CHANGE FOR PDF SEARCHABLE		
REV. LTR: A	VERSION: 01	TDR: 000001009382
FILE: \MGA\00000\661	REVISED: 02:46:19 02/13/2020	BY: MGHMTT
MTL: -		© □

BALDOR - RELIANCE®

CONN DIAG - STANDARD 9 LEAD, DELTA-CONNECTED

SH 1 of 1