

ABB BALDOR RELIANCE III

Customer information packet

SPM4111T

25HP, 1185RPM, 3PH, 60HZ, 324T, 1272M, TEFC, F1

Class - None

Division - Not Applicable

Specifications

Enclosure	TEFC
Frame	324T
Frame Material	Iron
Frequency	60.00 Hz
Haz Area Class and Group	None
Haz Area Division	Not Applicable
Motor Letter Type	Three Phase
Output @ Frequency	25.000 HP @ 60 HZ
Phase	3
Synchronous Speed @ Frequency	1200 RPM @ 60 HZ
Voltage @ Frequency	460.0 V @ 60 HZ 230.0 V @ 60 HZ
Agency Approvals	CURUSEEV NEMA PREMIUM NEMA_PREMIUM WEEE CSA
Ambient Temperature	40 °C
Auxiliary Box	NO AUXILLARY BOX
Auxiliary Box Lead Termination	None
Base Indicator	Rigid
Bearing Grease Type	Polyrex EM (-20F +300F)
Blower	None
Current @ Voltage	31.000 A @ 460.0 V 62.000 A @ 230.0 V
Design Code	A
Drip Cover	No Drip Cover
Duty Rating	CONT
Efficiency @ 100% Load	94.1 %
Electrically Isolated Bearing	Not Electrically Isolated
Feedback Device	NO FEEDBACK
Front Shaft Indicator	None

Part Detail

Revision	D
Type	AC
Mech. spec.	12T116
Base	
Status	PRD/A
Elec. spec.	12WGZ342
Layout	12LYT116
Eff. date	04-17-2026
CD Diagram	CD0005
Poles	06
Leads	9#8
Proprietary	False
Created date	10-02-2023

Haz Area Temp Code	T3C
Heater Indicator	No Heater
High Voltage Full Load Amps	31.0 a
Insulation Class	F
Inverter Code	Inverter Duty
KVA Code	J
Lifting Lugs	Standard Lifting Lugs
Locked Bearing Indicator	Locked Bearing
Max Speed	1800 rpm
Motor Lead Quantity/Wire Size	9 @ 8 AWG
Motor Lead Termination	Flying Leads
Motor Standards	NEMA
Motor Type	1272M
Mounting Arrangement	F1
Number of Poles	6
Overall Length	30.71 IN
Power Factor	83
Product Family	Chemical Processing (Not DC)
Pulley End Bearing Type	Ball
Pulley Face Code	Standard
Pulley Shaft Indicator	Standard
Rodent Screen	None
RoHS Status	ROHS COMPLIANT
Service Factor	1.15
Shaft Diameter	2.125 IN
Shaft Ground Indicator	No Shaft Grounding
Shaft Rotation	Reversible
Shaft Slinger Indicator	No Slinger
Speed	1185 rpm
Speed Code	Single Speed
Starting Method	Direct on line
Thermal Device - Bearing	None
Thermal Device - Winding	None
Vibration Sensor Indicator	No Vibration Sensor

Winding Thermal 1

None

Winding Thermal 2

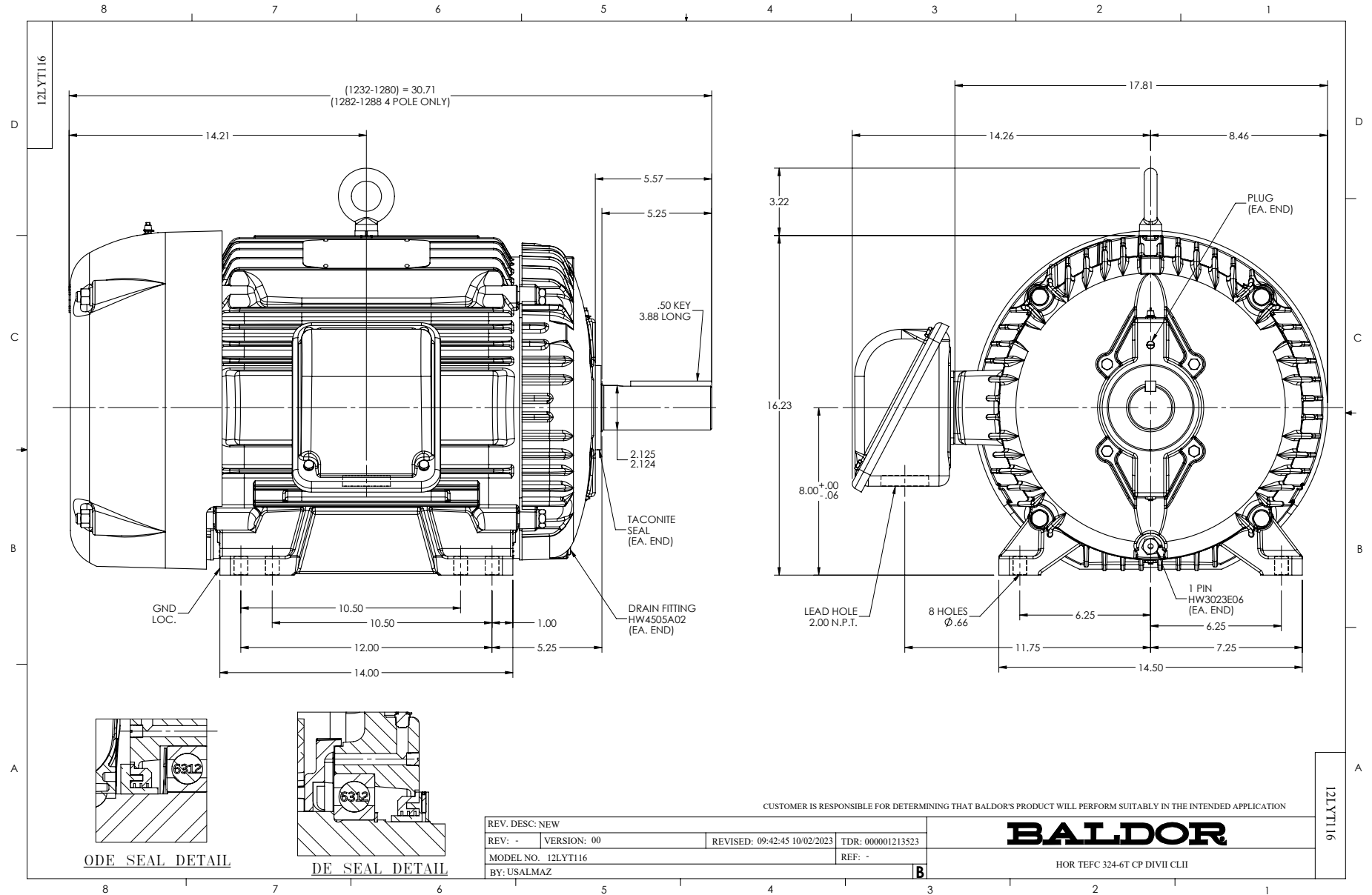
None

Nameplate

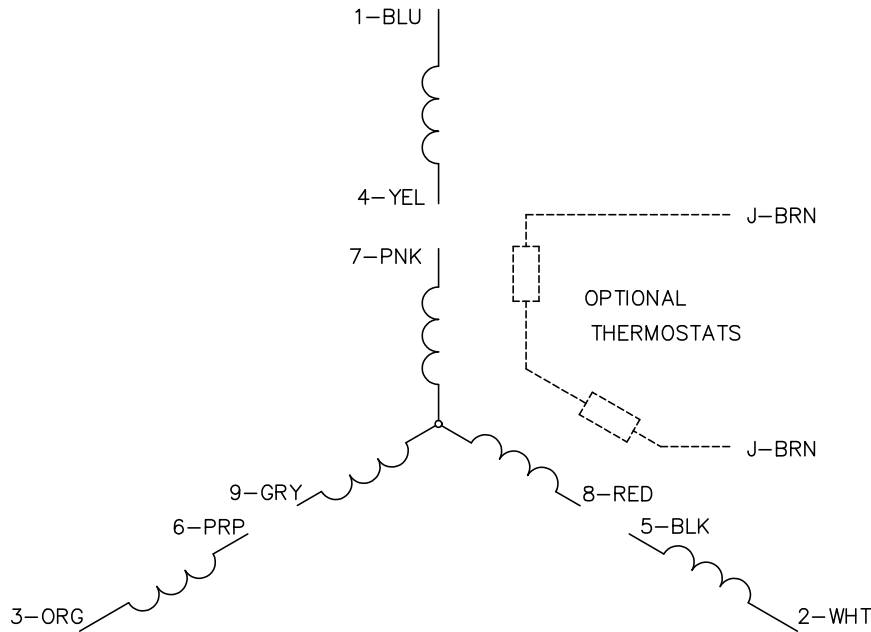
NP4439B01C23L

CAT #	SPM4111T	SER #		CC	010A	WGT	680	LBS	
SPEC	12T116Z342	FRAME	324T	ENCL	TEFC	IP	55		
RATING	40C AMB-CONT			NEMA NOM. EFF	94.1				
HP	25	VOLTS	230/460						
AMPS	62/31	RPM	1185	HZ	60				
PH	3	CL	F	CODE	J	DES	A	PF	83 %
		SER.F.	1.15		SF AMP				
DE BRG	6312	ODE BRG	6312	LUBE	POLYREX EM				
INV TYPE:	VPWM	SL HZ	0.8	CHP	60	TO	90	1.5:1	
WK2	13.8	LBFT2		MAX RPM	1800	CT	6	TO	60 10:1
MAG CUR	29/14.5			VT	3	TO	60	20:1	
				MEETS INTENT OF IEEE-45			FOR WEATHER PROTECTION		
CL I DIV 2 GRPS A,B,C,D				TEMP CODE	T3C	CL I INV TEMP CODE		T3	TEMP= 200
CL I ZONE 2 GRPS				IIA,IIB,IIC	TEMP = 160	CL II INV TEMP CODE		T3	TEMP = 200 C
CL II DIV 2 GRPS F&G				TEMP CODE	T3C	1.0 SF ON PWM INVERTER POWER			
CL II ZONE 22 GRPS IIIB				TEMP=	160				

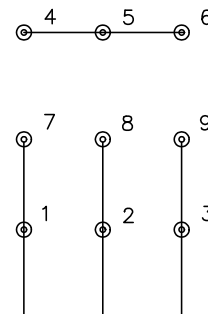
YR



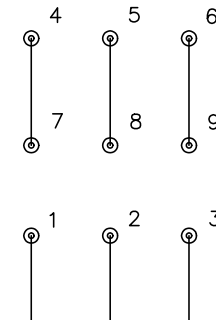
CD0005



LOW VOLTAGE
(2Y)



HIGH VOLTAGE
(1Y)



NOTES:

1. INTERCHANGE ANY TWO LINE LEADS TO REVERSE ROTATION.
2. OPTIONAL THERMOSTATS ARE PROVIDED WHEN SPECIFIED.
3. ACTUAL NUMBER OF INTERNAL PARALLEL CIRCUITS MAY BE A MULTIPLE OF THOSE SHOWN ABOVE.
4. LEAD COLORS ARE OPTIONAL. LEADS MUST ALWAYS BE NUMBERED AS SHOWN.

REV. DESC: REVISE TO SHOW OPTIONAL COLORS			
REV. LTR: E	BY: JLP	REVISED: 01/19/99 10:15	TDR: 0171435
S00000		FILE: AAA00005140	MDL: -
		MTL: -	

BALDOR ELECTRIC Co.

3PH, DV, 9 LEADS

CD0005