



Customer information packet

SPM3714T

10HP, 1775RPM, 3PH, 60HZ, 215T, 3756M, TEFC, F1

Class - None

Division - Not Applicable

Specifications

Enclosure	TEFC
Frame	215T
Frame Material	Steel
Frequency	60.00 Hz
Haz Area Class and Group	None
Haz Area Division	Not Applicable
Motor Letter Type	Three Phase
Output @ Frequency	10.000 HP @ 60 HZ
Phase	3
Synchronous Speed @ Frequency	1800 RPM @ 60 HZ
Voltage @ Frequency	230.0 V @ 60 HZ 460.0 V @ 60 HZ
Agency Approvals	CURUSEEV NEMA PREMIUM WEEE
Ambient Temperature	40 °C
Auxillary Box	No Auxillary Box
Auxillary Box Lead Termination	None
Base Indicator	Rigid
Bearing Grease Type	Polyrex EM (-20F +300F)
Blower	None
Current @ Voltage	13.000 A @ 460.0 V 26.000 A @ 230.0 V
Design Code	A
Drip Cover	No Drip Cover
Duty Rating	CONT
Efficiency @ 100% Load	92.4 %
Electrically Isolated Bearing	Not Electrically Isolated
Feedback Device	NO FEEDBACK
Front Shaft Indicator	None
Heater Indicator	No Heater
High Voltage Full Load Amps	13.0 a

Part detail

Revision	C
Type	AC
Mech. spec.	37T646
Base	
Status	PRD/A
Elec. spec.	37WGZ669
Layout	37LYT646
Eff. date	05-03-2024
CD Diagram	CD0005
Poles	04
Leads	9#14
Proprietary	False
Created date	09-05-2023

Insulation Class	F
Inverter Code	Inverter Duty
KVA Code	L
Lifting Lugs	Standard Lifting Lugs
Locked Bearing Indicator	No Locked Bearing
Max Speed	2700 rpm
Motor Lead Quantity/Wire Size	9 @ 14 AWG
Motor Lead Termination	Flying Leads
Motor Standards	NEMA
Motor Type	3756M
Mounting Arrangement	F1
Number of Poles	4
Overall Length	20.52 IN
Power Factor	78
Product Family	General Purpose
Pulley End Bearing Type	Ball
Pulley Face Code	Standard
Pulley Shaft Indicator	Standard
Rodent Screen	None
RoHS Status	ROHS COMPLIANT
Service Factor	1.15
Shaft Diameter	1.375 IN
Shaft Ground Indicator	No Shaft Grounding
Shaft Rotation	Reversible
Shaft Slinger Indicator	No Slinger
Speed	1775 rpm
Speed Code	Single Speed
Starting Method	Direct on line
Thermal Device - Bearing	None
Thermal Device - Winding	None
Vibration Sensor Indicator	No Vibration Sensor
Winding Thermal 1	None
Winding Thermal 2	None

Nameplate

NP4423A01A01L										
CAT #	SPM3714T				WGT	187	LBS			
SPEC	37T646Z669				ENCL	TEFC				
SER #					CC	010A	IP	54		
HP	10		MAG CUR	12.8/6.4						
VOLTS	230/460				NEMA NOM. EFF	92.4				
AMPS	26/13				PF	78				
RATING	40C AMB-CONT									
RPM	1775				MAX RPM	2700				
FRAME	215T	HZ	60	CODE	L	CLASS	F			
SER.F.	1.15	SF AMP	29/14.5		PH	3	DES	A		
DE	6307		ODE	6206						
LUBRICATION	POLYREX EM									
ID LOGO	INVERTER TYPE	VPWM	CHP	60	TO	90	1.5:1			
ID LOGO	WK2	1.38	CT	6	TO	60	10:1			
ID LOGO	SL HZ	0.8	VT	3	TO	60	20:1			
					QR					
YR										

AC Induction Motor Performance Data

Record # 102782

Typical performance - not guaranteed values

Winding: 37WGZ669-R001		Type: 3756M	Enclosure: TEFC	
Nameplate Data			460 V, 60 Hz: High Voltage Connection	
Rated Output (HP)	10	Full Load Torque	29.66 LB-FT	
Volts	230/460	Start Configuration	direct on line	
Full Load Amps	26/13	Breakdown Torque	125 LB-FT	
R.P.M.	1775	Pull-up Torque	60.3 LB-FT	
Hz	60 Phase	Locked-rotor Torque	75.2 LB-FT	
NEMA Design Code	A KVA Code	Starting Current	121 A	
Service Factor (S.F.)	1.15	No-load Current	6.42 A	
NEMA Nom. Eff.	92.4 Power Factor	Line-line Res. @ 25°C	0.75972 Ω	
Rating - Duty	40C AMB-CONT	Temp. Rise @ Rated Load	60°C	
S.F. Amps	29/14.5	Temp. Rise @ S.F. Load	72°C	
		Locked-rotor Power Factor	34.4	
		Rotor inertia	1.38 lb-ft ²	

Load Characteristics 460 V, 60 Hz, 10 HP

% of Rated Load	25	50	75	100	125	150	S.F.
Power Factor	38	60	72	78	82	84	80
Efficiency	87.3	91.8	92.8	92.8	92.3	91.5	92.5
Speed	1792.8	1786.9	1780.5	1773.8	1766.5	1758.8	1769
Line amperes	7.04	8.54	10.6	12.9	15.5	18.3	14.5

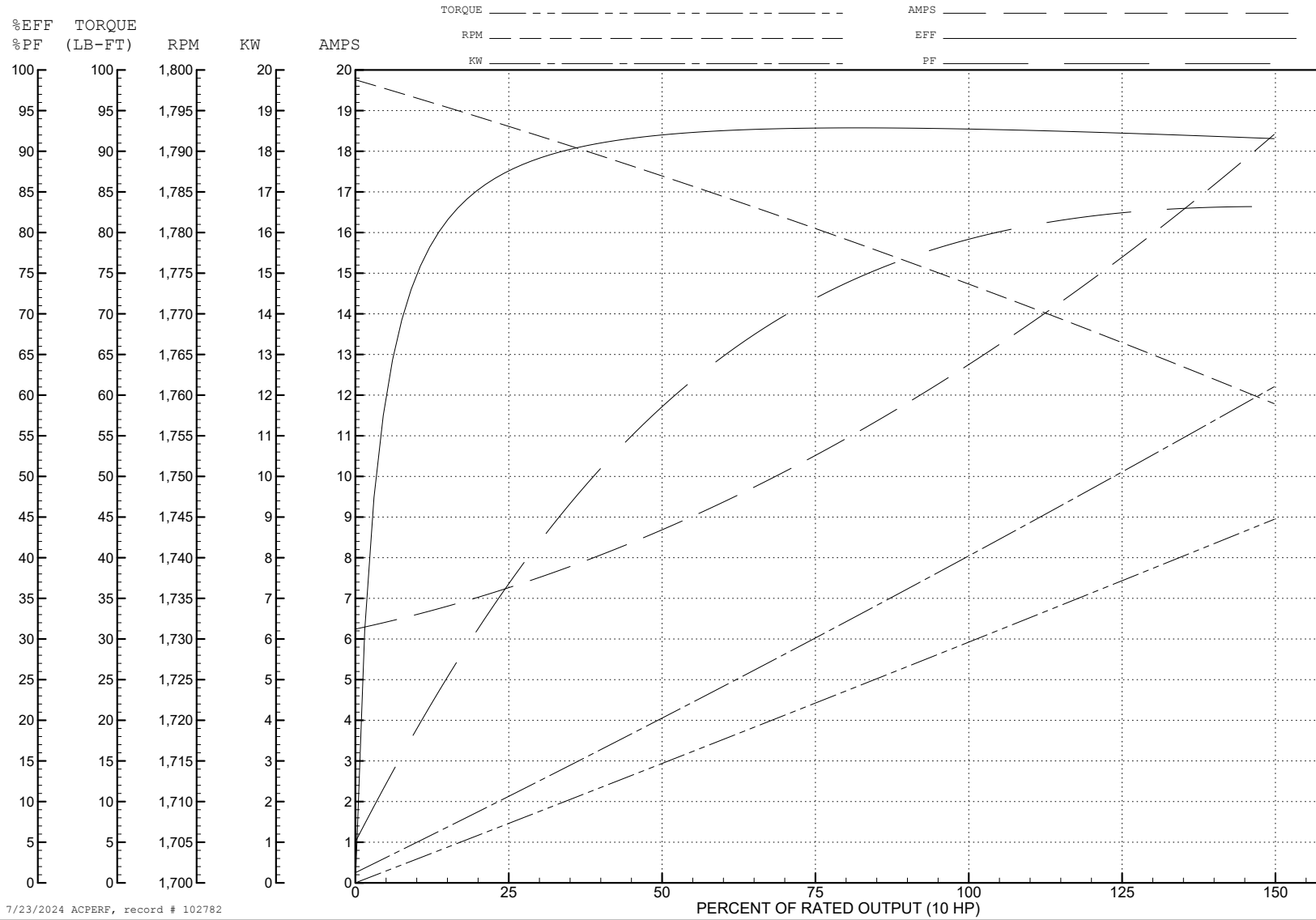
ABB Motors and Mechanical Inc.

WINDING # 37WGZ669

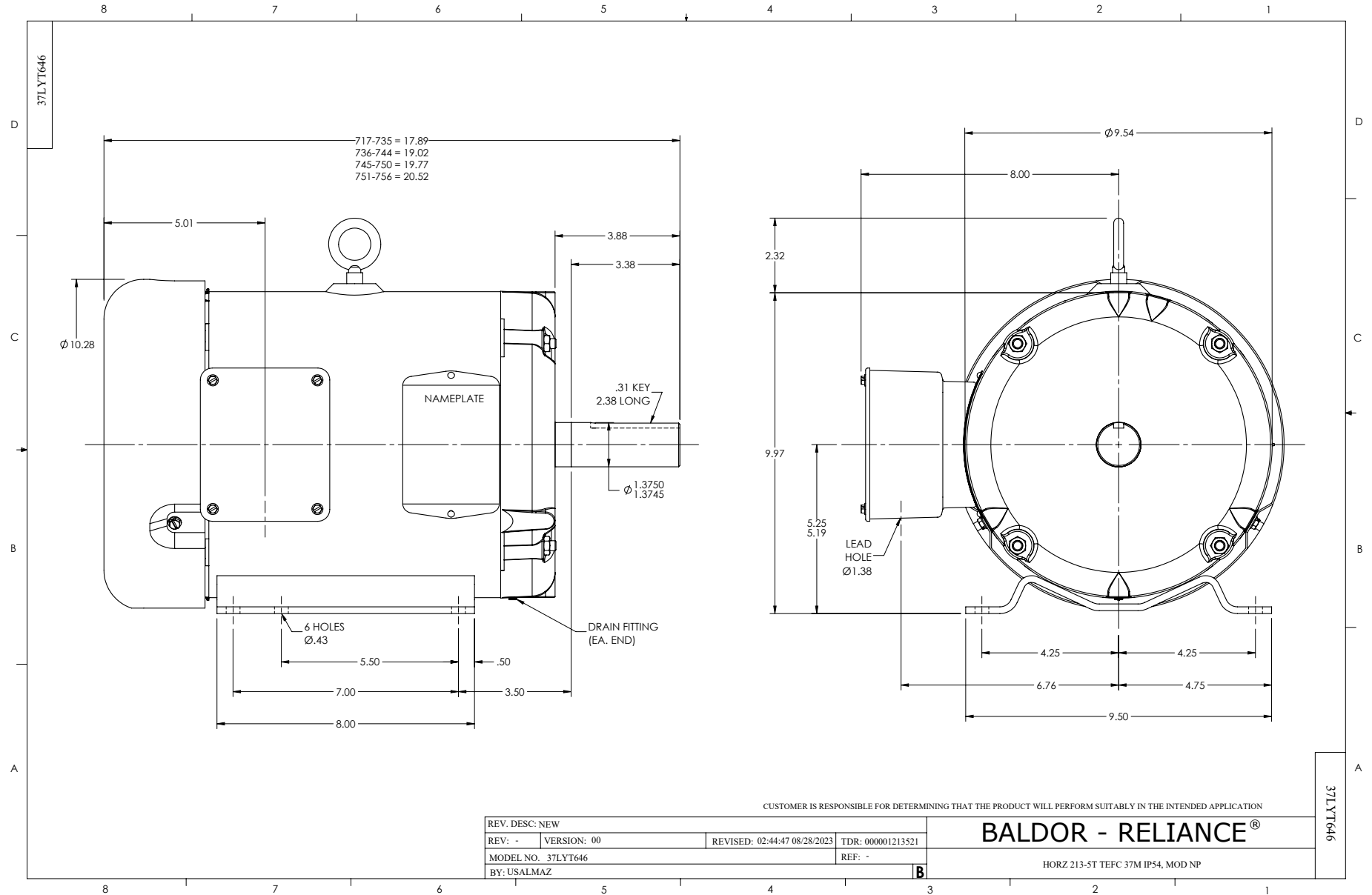
Typical performance - not guaranteed values.

10 HP 3 PH 60 HZ 1775 RPM 460 V 3756M

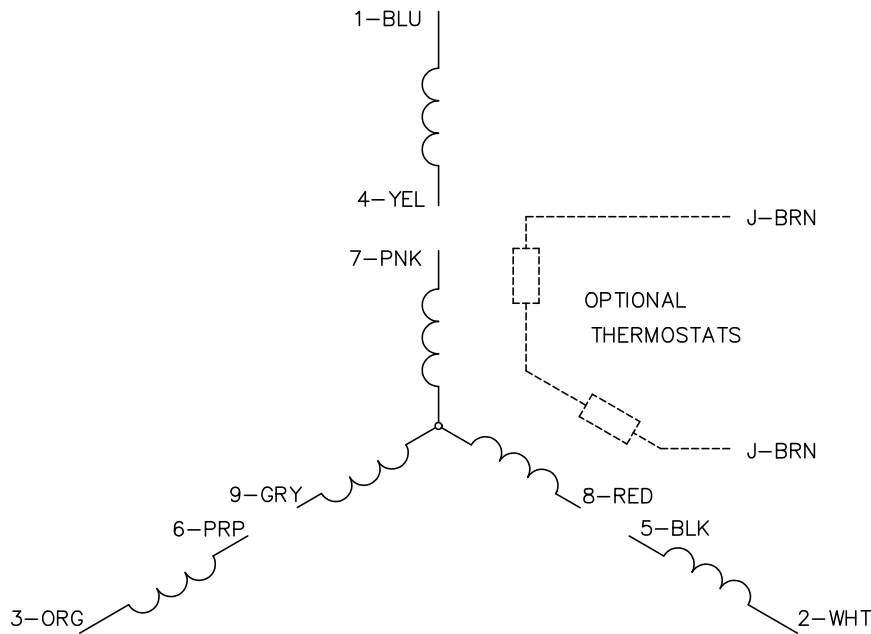
TORQUES (LB-FT): PO=125 PU=60.3 LR=75.2 LRA=121



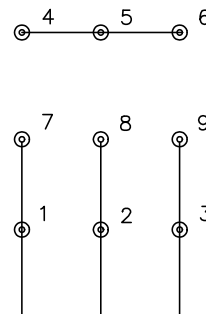
7/23/2024 ACPERF, record # 102782



CD0005

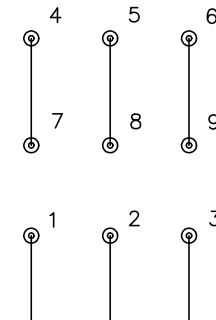


LOW VOLTAGE
(2Y)



LINE

HIGH VOLTAGE
(1Y)



LINE

NOTES:

1. INTERCHANGE ANY TWO LINE LEADS TO REVERSE ROTATION.
2. OPTIONAL THERMOSTATS ARE PROVIDED WHEN SPECIFIED.
3. ACTUAL NUMBER OF INTERNAL PARALLEL CIRCUITS MAY BE A MULTIPLE OF THOSE SHOWN ABOVE.
4. LEAD COLORS ARE OPTIONAL. LEADS MUST ALWAYS BE NUMBERED AS SHOWN.

CD0005

REV. DESC: REVISE TO SHOW OPTIONAL COLORS			
REV. LTR: E	BY: JLP	REVISED: 01/19/99 10:15	TDR: 0171435
S00000		FILE: AAA00005140	MDL: -
		MTL: -	

BALDOR ELECTRIC Co.

3PH, DV, 9 LEADS