

ABB BALDOR RELIANCE III

Customer information packet

SPM3708T

5HP, 1165RPM, 3PH, 60HZ, 215T, 3754M, TEFC, F1

Class - None

Division - Not Applicable

Specifications

Enclosure	TEFC
Frame	215T
Frame Material	Steel
Frequency	60.00 Hz
Haz Area Class and Group	None
Haz Area Division	Not Applicable
Motor Letter Type	Three Phase
Output @ Frequency	5.000 HP @ 60 HZ
Phase	3
Synchronous Speed @ Frequency	1200 RPM @ 60 HZ
Voltage @ Frequency	230.0 V @ 60 HZ 460.0 V @ 60 HZ
Agency Approvals	WEEE NEMA PREMIUM 4
Ambient Temperature	40 °C
Auxiliary Box	NO AUXILLARY BOX
Auxiliary Box Lead Termination	None
Base Indicator	Rigid
Bearing Grease Type	Polyrex EM (-20F +300F)
Blower	None
Current @ Voltage	14.800 A @ 230.0 V 7.400 A @ 460.0 V
Design Code	A
Drip Cover	No Drip Cover
Duty Rating	CONT
Efficiency @ 100% Load	90.2 %
Electrically Isolated Bearing	Not Electrically Isolated
Feedback Device	NO FEEDBACK
Front Shaft Indicator	None
Heater Indicator	No Heater
High Voltage Full Load Amps	7.4 a
Insulation Class	F

Part Detail

Revision	A
Type	AC
Mech. spec.	37T646
Base	
Status	PRD/A
Elec. spec.	37WGS405
Layout	37LYT646
Eff. date	05-03-2024
CD Diagram	CD0005
Poles	06
Leads	9#14
Proprietary	False
Created date	09-05-2023

Inverter Code	Inverter Ready
KVA Code	L
Lifting Lugs	Standard Lifting Lugs
Locked Bearing Indicator	No Locked Bearing
Max Speed	1800 rpm
Motor Lead Quantity/Wire Size	9 @ 14 AWG
Motor Lead Termination	Flying Leads
Motor Standards	NEMA
Motor Type	3754M
Mounting Arrangement	F1
Number of Poles	6
Overall Length	20.52 IN
Power Factor	70
Product Family	General Purpose
Pulley End Bearing Type	Ball
Pulley Face Code	Standard
Pulley Shaft Indicator	Standard
Rodent Screen	None
RoHS Status	ROHS COMPLIANT
Service Factor	1.15
Shaft Diameter	1.375 IN
Shaft Ground Indicator	No Shaft Grounding
Shaft Rotation	Reversible
Shaft Slinger Indicator	No Slinger
Speed	1165 rpm
Speed Code	Single Speed
Starting Method	Direct on line
Thermal Device - Bearing	None
Thermal Device - Winding	None
Vibration Sensor Indicator	No Vibration Sensor
Winding Thermal 1	None
Winding Thermal 2	None

Nameplate

NP4423A01A01L

CAT #	SPM3708T		WGT	149	LBS	
SPEC	37T646S405		ENCL	TEFC		
SER #		CC	010A	IP	54	
HP	5	MAG CUR	8/4			
VOLTS	230/460		NEMA NOM. EFF	90.2		
AMPS	14.8/7.4		PF	70		
RATING	40C AMB-CONT					
RPM	1165		MAX RPM	1800		
FRAME	215T	HZ	60	CODE	L	CLASS F
SER.F.	1.15	SF AMP	16.6/8.3		PH	3 DES A
DE	6307		ODE	6206		
LUBRICATION	POLYREX EM					
ID LOGO	INVERTER TYPE	VPWM	CHP	60	TO	90 1.5:1
ID LOGO	WK2 1.34	CT 6	TO	60	10:1	
ID LOGO	SL HZ 1.75	VT 3	TO	60	20:1	
YR			QR			

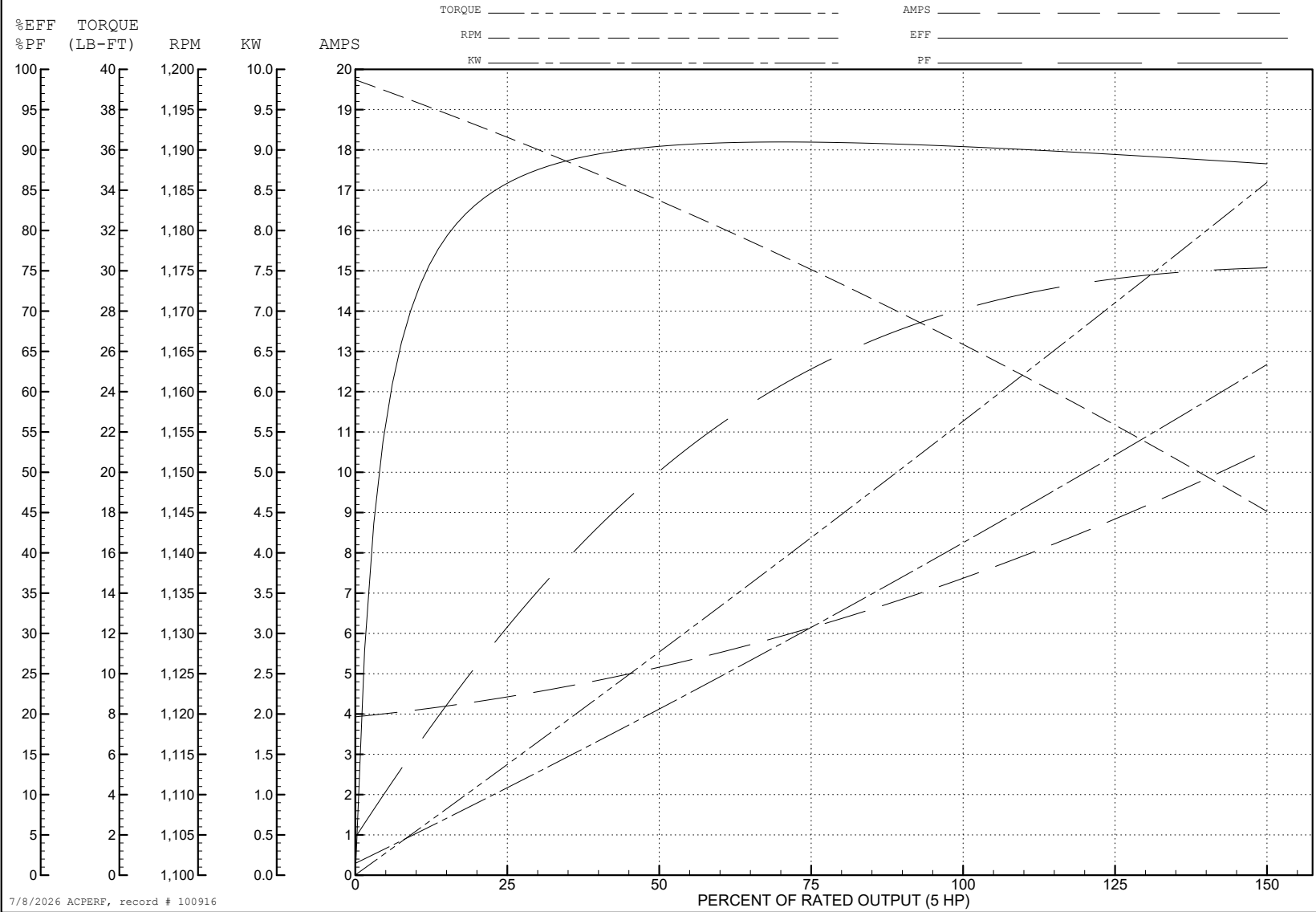
ABB Motors and Mechanical Inc.

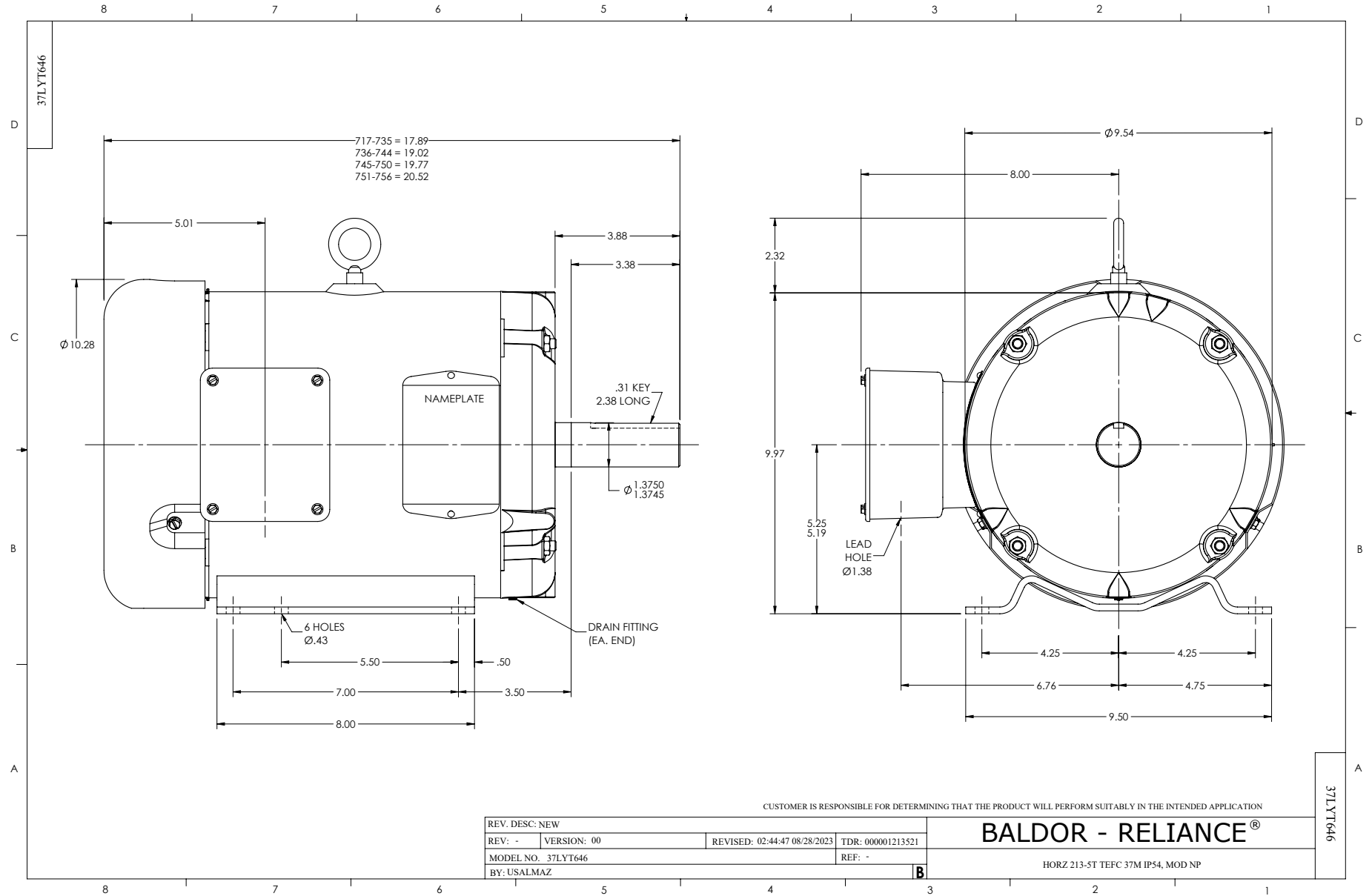
WINDING # 37WGS405

5 HP 3 PH 60 HZ 1165 RPM 460 V 3754M

Typical performance - not guaranteed values.

TORQUES (LB-FT): PO=86.3 PU=46.4 LR=58.5 LRA=57.8





CUSTOMER IS RESPONSIBLE FOR DETERMINING THAT THE PRODUCT WILL PERFORM SUITABLY IN THE INTENDED APPLICATION

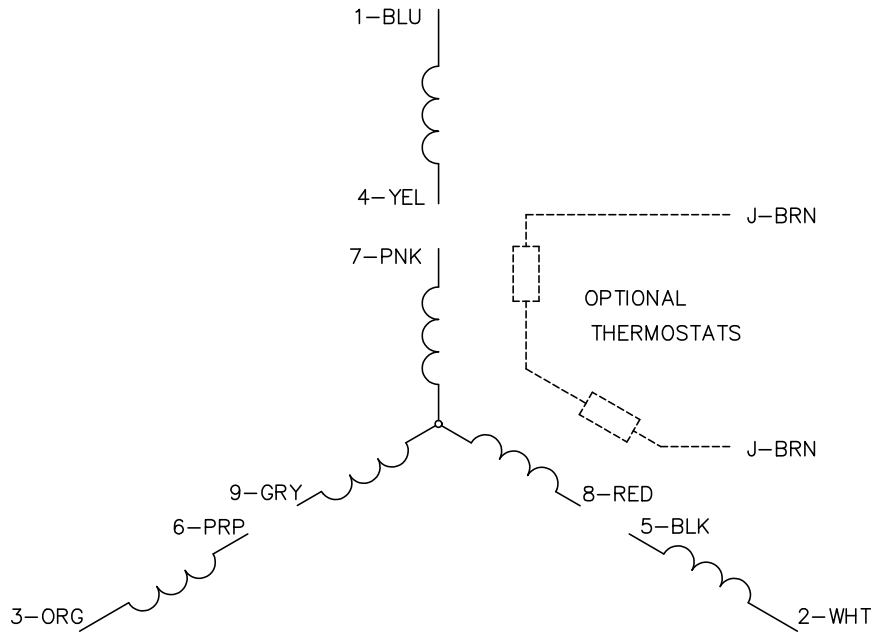
REV. DESC: NEW	VERSION: 00	REVISED: 02:44:47 08/28/2023	TDR: 000001213521
MODEL NO. 37LYT646	BY: USALMAZ	REF: -	

BALDOR - RELIANCE®

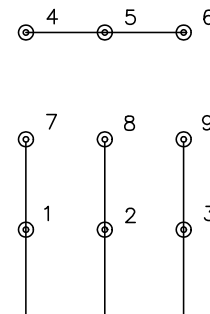
HORZ 213-5T TEFC 37M IP54, MOD NP

37LYT646

CD0005

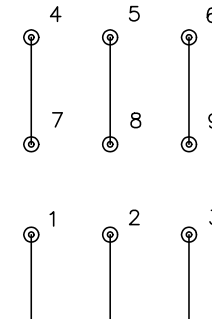


LOW VOLTAGE
(2Y)



LINE

HIGH VOLTAGE
(1Y)



LINE

NOTES:

1. INTERCHANGE ANY TWO LINE LEADS TO REVERSE ROTATION.
2. OPTIONAL THERMOSTATS ARE PROVIDED WHEN SPECIFIED.
3. ACTUAL NUMBER OF INTERNAL PARALLEL CIRCUITS MAY BE A MULTIPLE OF THOSE SHOWN ABOVE.
4. LEAD COLORS ARE OPTIONAL. LEADS MUST ALWAYS BE NUMBERED AS SHOWN.

CD0005

REV. DESC: REVISE TO SHOW OPTIONAL COLORS			
REV. LTR: E	BY: JLP	REVISED: 01/19/99 10:15	TDR: 0171435
S00000		FILE: AAA00005140	MDL: -
		MTL: -	

BALDOR ELECTRIC Co.

3PH, DV, 9 LEADS