



Customer information packet

SPM3615T

5HP, 1755RPM, 3PH, 60HZ, 184T, 3648M, TEFC, F1

Class - None

Division - Not Applicable

Specifications

Enclosure	TEFC
Frame	184T
Frame Material	Steel
Frequency	60.00 Hz
Haz Area Class and Group	None
Haz Area Division	Not Applicable
Motor Letter Type	Three Phase
Output @ Frequency	5.000 HP @ 60 HZ
Phase	3
Synchronous Speed @ Frequency	1800 RPM @ 60 HZ
Voltage @ Frequency	230.0 V @ 60 HZ 460.0 V @ 60 HZ
Agency Approvals	CURUSEEV NEMA PREMIUM WEEE
Ambient Temperature	40 °C
Auxillary Box	No Auxillary Box
Auxillary Box Lead Termination	None
Base Indicator	Rigid
Bearing Grease Type	Polyrex EM (-20F +300F)
Blower	None
Current @ Voltage	13.200 A @ 230.0 V 6.600 A @ 460.0 V
Design Code	B
Drip Cover	No Drip Cover
Duty Rating	CONT
Efficiency @ 100% Load	91.0 %
Electrically Isolated Bearing	Not Electrically Isolated
Feedback Device	NO FEEDBACK
Front Shaft Indicator	None
Heater Indicator	No Heater
High Voltage Full Load Amps	6.6 a

Part detail

Revision	D
Type	AC
Mech. spec.	36P394
Base	
Status	PRD/A
Elec. spec.	36WGZ629
Layout	36LYP394
Eff. date	06-07-2024
CD Diagram	CD0005
Poles	04
Leads	9#16
Proprietary	False
Created date	09-07-2023

Insulation Class	F
Inverter Code	Inverter Duty
KVA Code	J
Lifting Lugs	Standard Lifting Lugs
Locked Bearing Indicator	No Locked Bearing
Max Speed	2700 rpm
Motor Lead Quantity/Wire Size	9 @ 16 AWG
Motor Lead Termination	Flying Leads
Motor Standards	NEMA
Motor Type	3648M
Mounting Arrangement	F1
Number of Poles	4
Overall Length	18.48 IN
Power Factor	78
Product Family	General Purpose
Pulley End Bearing Type	Ball
Pulley Face Code	Standard
Pulley Shaft Indicator	Standard
Rodent Screen	None
RoHS Status	ROHS COMPLIANT
Service Factor	1.15
Shaft Diameter	1.125 IN
Shaft Ground Indicator	No Shaft Grounding
Shaft Rotation	Reversible
Shaft Slinger Indicator	No Slinger
Speed	1755 rpm
Speed Code	Single Speed
Starting Method	Direct on line
Thermal Device - Bearing	None
Thermal Device - Winding	None
Vibration Sensor Indicator	No Vibration Sensor
Winding Thermal 1	None
Winding Thermal 2	None

AC Induction Motor Performance Data

Record # 96333

Typical performance - not guaranteed values

Winding: 36WGZ629-R001		Type: 3648M	Enclosure: TEFC	
Nameplate Data			460 V, 60 Hz: High Voltage Connection	
Rated Output (HP)	5	Full Load Torque	14.98 LB-FT	
Volts	230/460	Start Configuration	direct on line	
Full Load Amps	13.2/6.6	Breakdown Torque	54 LB-FT	
R.P.M.	1755	Pull-up Torque	31.8 LB-FT	
Hz	60 Phase	Locked-rotor Torque	36 LB-FT	
NEMA Design Code	B KVA Code	Starting Current	49.6 A	
Service Factor (S.F.)	1.15	No-load Current	3.2 A	
NEMA Nom. Eff.	91 Power Factor	Line-line Res. @ 25°C	2 Ω	
Rating - Duty	40C AMB-CONT	Temp. Rise @ Rated Load	65°C	
S.F. Amps	14.8/7.4	Temp. Rise @ S.F. Load	79°C	
		Locked-rotor Power Factor	38.4	
		Rotor inertia	0.447 lb-ft ²	

Load Characteristics 460 V, 60 Hz, 5 HP

% of Rated Load	25	50	75	100	125	150	S.F.
Power Factor	40	61	72	78	82	83	80
Efficiency	84	90	91	91	90	89	90.4
Speed	1789	1780	1770	1758	1747	1733	1751
Line amperes	3.58	4.36	5.37	6.6	7.94	9.35	7.4

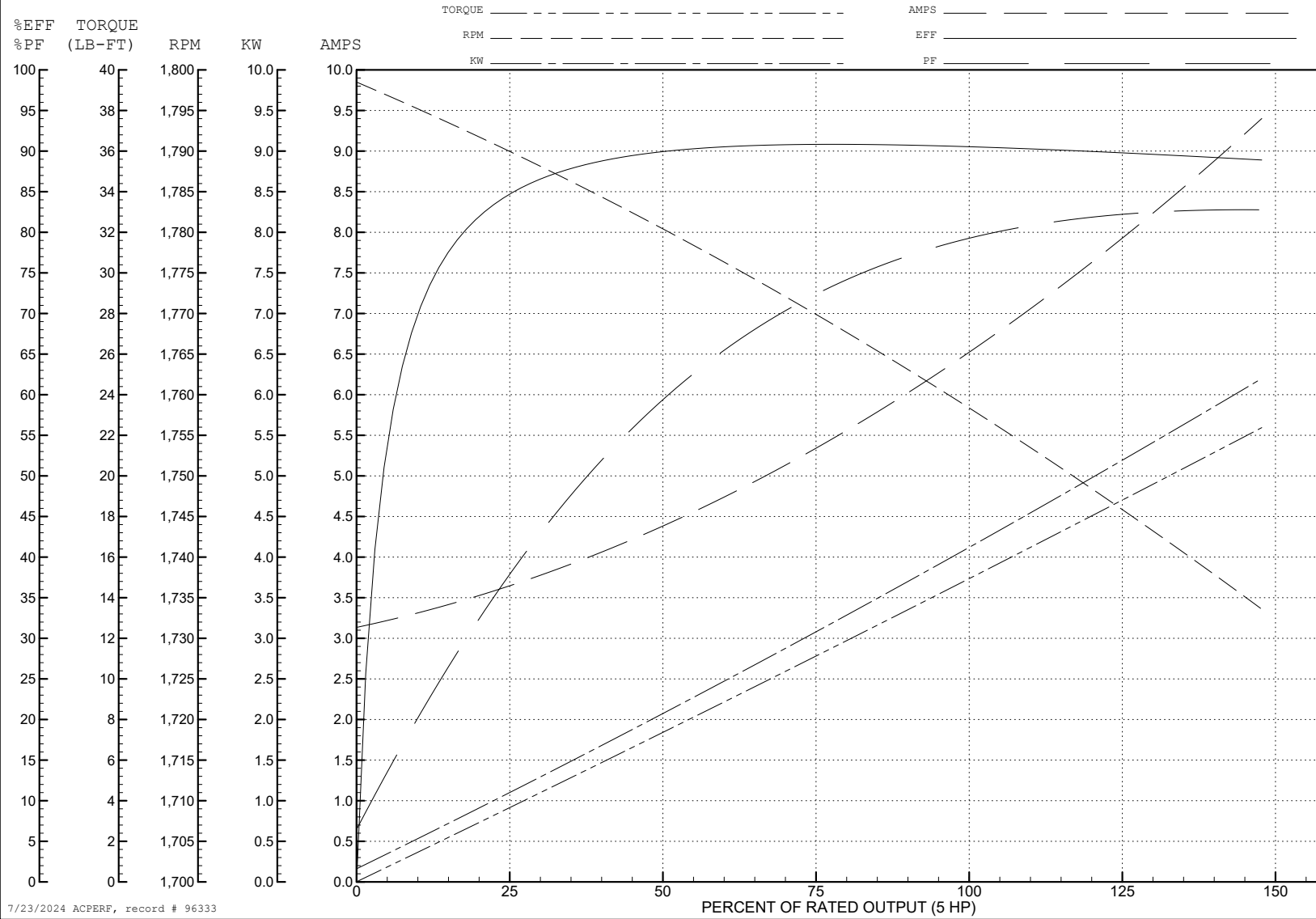
ABB Motors and Mechanical Inc.

WINDING # 36WGZ629

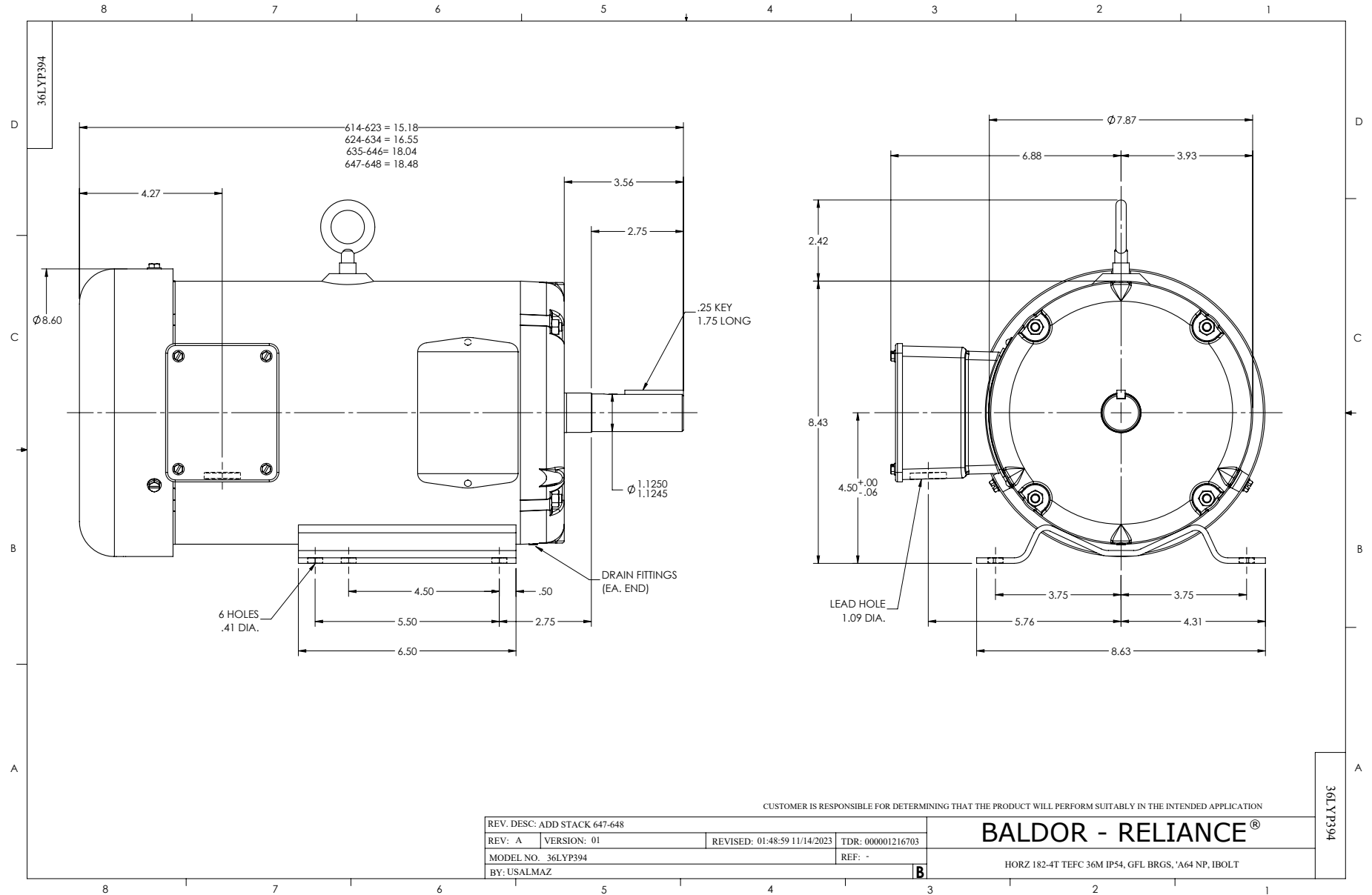
5 HP 3 PH 60 HZ 1755 RPM 460 V 3648M

Typical performance - not guaranteed values.

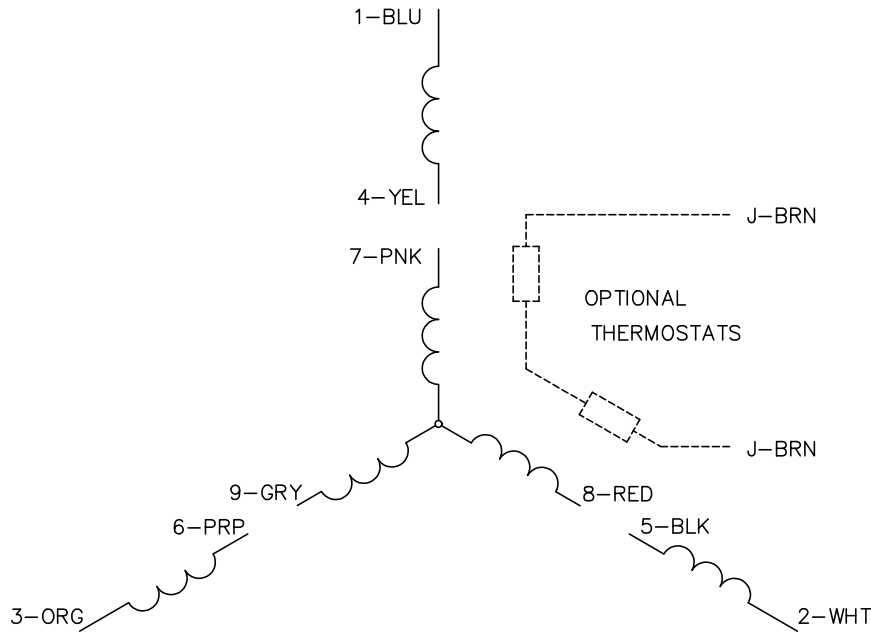
TORQUES (LB-FT): PO=54 PU=31.8 LR=36 LRA=49.6



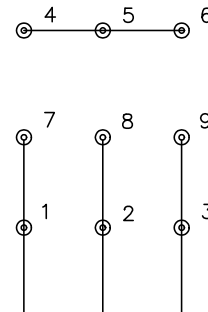
7/23/2024 ACPERF, record # 96333



CD0005

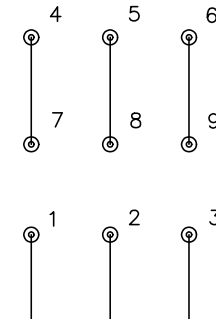


LOW VOLTAGE
(2Y)



LINE

HIGH VOLTAGE
(1Y)



LINE

NOTES:

1. INTERCHANGE ANY TWO LINE LEADS TO REVERSE ROTATION.
2. OPTIONAL THERMOSTATS ARE PROVIDED WHEN SPECIFIED.
3. ACTUAL NUMBER OF INTERNAL PARALLEL CIRCUITS MAY BE A MULTIPLE OF THOSE SHOWN ABOVE.
4. LEAD COLORS ARE OPTIONAL. LEADS MUST ALWAYS BE NUMBERED AS SHOWN.

CD0005

REV. DESC: REVISE TO SHOW OPTIONAL COLORS			
REV. LTR: E	BY: JLP	REVISED: 01/19/99 10:15	TDR: 0171435
S00000		FILE: AAA00005140	MDL: -
		MTL: -	

BALDOR ELECTRIC Co.

3PH, DV, 9 LEADS