



Customer information packet

SPM3610T

3HP, 3500RPM, 3PH, 60HZ, 182T, 3634M, TEFC, F1

Class - None

Division - Not Applicable

Specifications

Enclosure	TEFC
Frame	182T
Frame Material	Steel
Frequency	60.00 Hz
Haz Area Class and Group	None
Haz Area Division	Not Applicable
Motor Letter Type	Three Phase
Output @ Frequency	3.000 HP @ 60 HZ
Phase	3
Synchronous Speed @ Frequency	3600 RPM @ 60 HZ
Voltage @ Frequency	230.0 V @ 60 HZ 460.0 V @ 60 HZ
Agency Approvals	CURUSEEV NEMA PREMIUM WEEE
Ambient Temperature	40 °C
Auxillary Box	No Auxillary Box
Auxillary Box Lead Termination	None
Base Indicator	Rigid
Bearing Grease Type	Polyrex EM (-20F +300F)
Blower	None
Current @ Voltage	3.400 A @ 460.0 V 6.800 A @ 230.0 V
Design Code	A
Drip Cover	No Drip Cover
Duty Rating	CONT
Efficiency @ 100% Load	88.5 %
Electrically Isolated Bearing	Not Electrically Isolated
Feedback Device	NO FEEDBACK
Front Shaft Indicator	None
Heater Indicator	No Heater
High Voltage Full Load Amps	3.4 a

Part detail

Revision	A
Type	AC
Mech. spec.	36P394
Base	
Status	PRD/A
Elec. spec.	36WGT562
Layout	36LYP394
Eff. date	06-20-2024
CD Diagram	CD0005
Poles	02
Leads	9#18
Proprietary	False
Created date	11-14-2023

Insulation Class	F
Inverter Code	Inverter Ready
KVA Code	M
Lifting Lugs	Standard Lifting Lugs
Locked Bearing Indicator	No Locked Bearing
Max Speed	5400 rpm
Motor Lead Quantity/Wire Size	9 @ 18 AWG
Motor Lead Termination	Flying Leads
Motor Standards	NEMA
Motor Type	3634M
Mounting Arrangement	F1
Number of Poles	2
Overall Length	16.55 IN
Power Factor	95
Product Family	General Purpose
Pulley End Bearing Type	Ball
Pulley Face Code	Standard
Pulley Shaft Indicator	Standard
Rodent Screen	None
RoHS Status	ROHS COMPLIANT
Service Factor	1.15
Shaft Diameter	1.125 IN
Shaft Ground Indicator	No Shaft Grounding
Shaft Rotation	Reversible
Shaft Slinger Indicator	No Slinger
Speed	3500 rpm
Speed Code	Single Speed
Starting Method	Direct on line
Thermal Device - Bearing	None
Thermal Device - Winding	None
Vibration Sensor Indicator	No Vibration Sensor
Winding Thermal 1	None
Winding Thermal 2	None

Nameplate**NP4423A01A01L**

CAT #	SPM3610T			WGT	81	LBS		
SPEC	36P394T562			ENCL	TEFC			
SER #				CC	010A	IP	54	
HP	3		MAG CUR	1.8/9				
VOLTS	230/460			NEMA NOM. EFF	88.5			
AMPS	6.8/3.4			PF	95			
RATING	40C AMB-CONT							
RPM	3500			MAX RPM	5400			
FRAME	182T	HZ	60	CODE	M	CLASS	F	
SER.F.	1.15	SF AMP	7.6/3.8		PH	3	DES	A
DE	6206		ODE	6205				
LUBRICATION	POLYREX EM							
ID LOGO	INVERTER TYPE		VPWM	CHP	60	TO	90	1.5:1
ID LOGO	WK2	0.15	CT	6	TO	60	10:1	
ID LOGO	SL HZ	1.7	VT	3	TO	60	20:1	
				QR				
YR								

AC Induction Motor Performance Data

Record # 100910

Typical performance - not guaranteed values

Winding: 36WGT562-R002		Type: 3634M		Enclosure: TEFC	
Nameplate Data			460 V, 60 Hz: High Voltage Connection		
Rated Output (HP)		3	Full Load Torque		4.55 LB-FT
Volts		230/460	Start Configuration		direct on line
Full Load Amps		6.8/3.4	Breakdown Torque		23.5 LB-FT
R.P.M.		3500	Pull-up Torque		15.1 LB-FT
Hz	60 Phase	3	Locked-rotor Torque		16.9 LB-FT
NEMA Design Code	A KVA Code	M	Starting Current		38.2 A
Service Factor (S.F.)		1.15	No-load Current		0.87 A
NEMA Nom. Eff.	88.5 Power Factor	95	Line-line Res. @ 25°C		3.58 Ω
Rating - Duty		40C AMB-CONT	Temp. Rise @ Rated Load		35°C
S.F. Amps		7.6/3.8	Temp. Rise @ S.F. Load		42°C
			Locked-rotor Power Factor		42
			Rotor inertia		0.153 lb-ft ²

Load Characteristics 460 V, 60 Hz, 3 HP

% of Rated Load	25	50	75	100	125	150	S.F.
Power Factor	72	87	93	95	96	97	96
Efficiency	82.5	87.9	89.1	88.7	88.4	87.3	88.5
Speed	3574	3551	3526	3500	3473	3442	3484
Line amperes	1.26	1.88	2.58	3.38	4.15	5.02	3.84

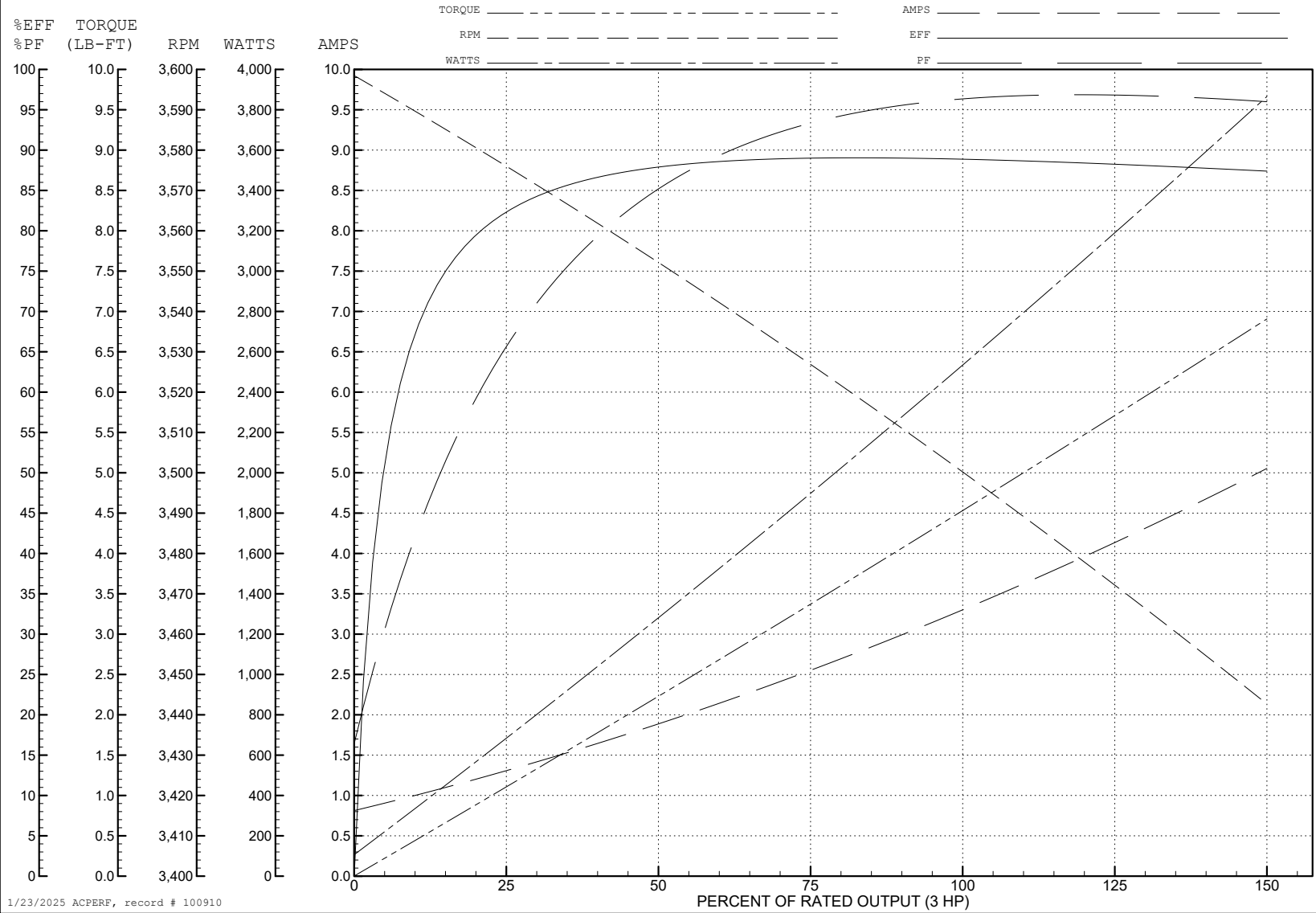
ABB Motors and Mechanical Inc.

WINDING # 36WGT562

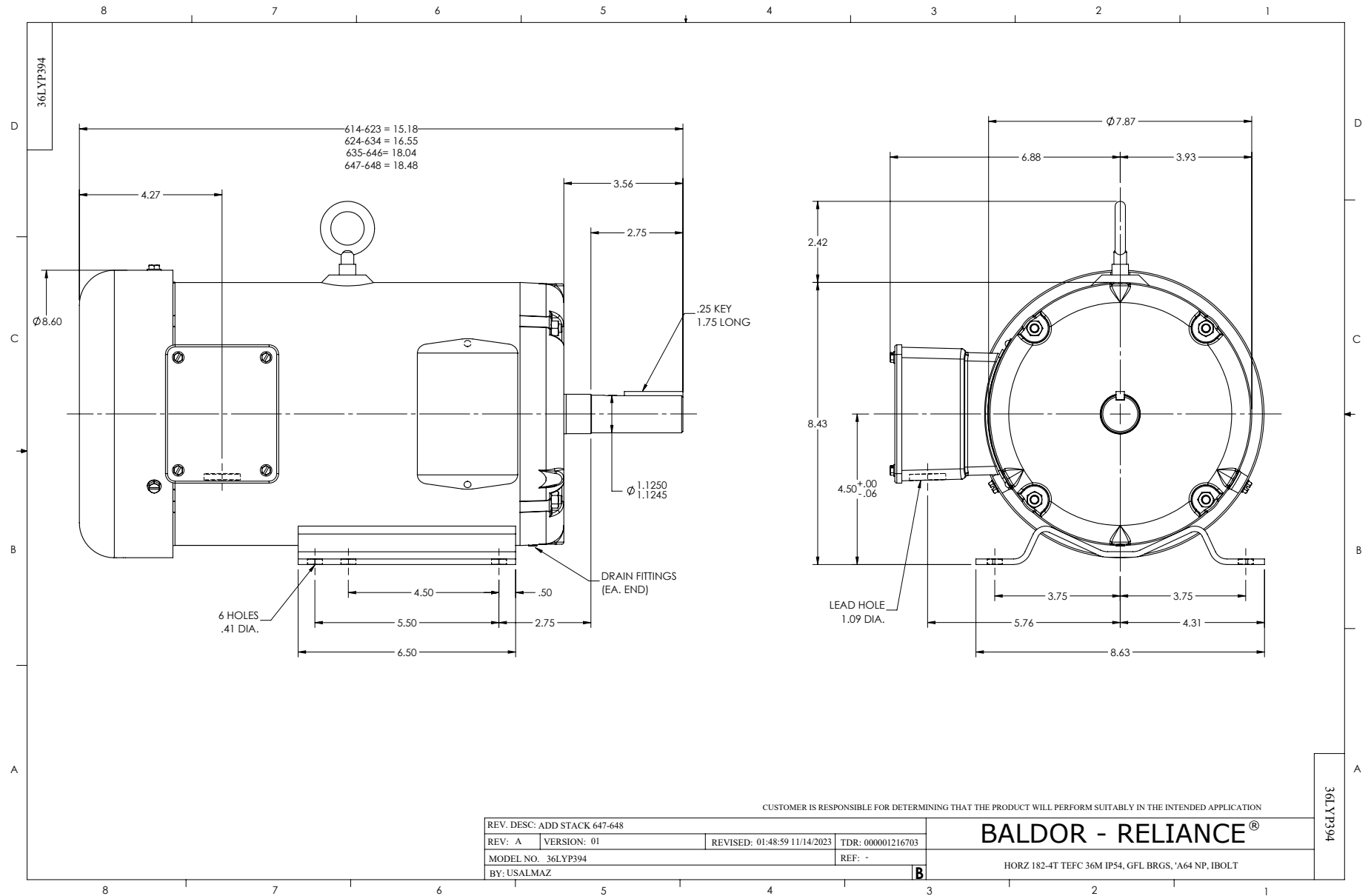
Typical performance - not guaranteed values.

3 HP 3 PH 60 HZ 3500 RPM 460 V 3634M

TORQUES (LB-FT): PO=23.5 PU=15.1 LR=16.9 LRA=38.2



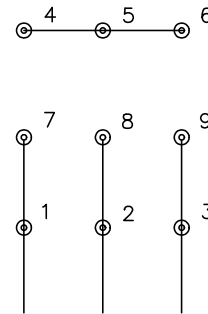
1/23/2025 ACPERF, record # 100910



CD0005

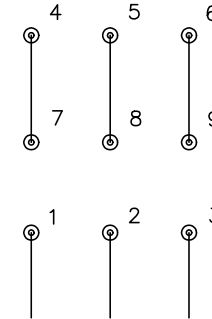


LOW VOLTAGE
(2Y)



LINE

HIGH VOLTAGE
(1Y)



LINE

NOTES:

1. INTERCHANGE ANY TWO LINE LEADS TO REVERSE ROTATION.
2. OPTIONAL THERMOSTATS ARE PROVIDED WHEN SPECIFIED.
3. ACTUAL NUMBER OF INTERNAL PARALLEL CIRCUITS MAY BE A MULTIPLE OF THOSE SHOWN ABOVE.
4. LEAD COLORS ARE OPTIONAL. LEADS MUST ALWAYS BE NUMBERED AS SHOWN.

CD0005

REV. DESC: REVISE TO SHOW OPTIONAL COLORS			
REV. LTR: E	BY: JLP	REVISED: 01/19/99 10:15	TDR: 0171435
S00000		FILE: AAA00005140	MDL: -
		MTL: -	

BALDOR ELECTRIC Co.

3PH, DV, 9 LEADS