



Customer information packet

SPM3558T

2HP, 1765RPM, 3PH, 60HZ, 145T, 3542M, TEFC, F1

Class - None

Division - Not Applicable

Specifications

Enclosure	TEFC
Frame	145T
Frame Material	Steel
Frequency	60.00 Hz
Haz Area Class and Group	None
Haz Area Division	Not Applicable
Motor Letter Type	Three Phase
Output @ Frequency	2.000 HP @ 60 HZ
Phase	3
Synchronous Speed @ Frequency	1800 RPM @ 60 HZ
Voltage @ Frequency	460.0 V @ 60 HZ 230.0 V @ 60 HZ
Agency Approvals	CURUSEEV NEMA PREMIUM WEEE
Ambient Temperature	40 °C
Auxillary Box	No Auxillary Box
Auxillary Box Lead Termination	None
Base Indicator	Rigid
Bearing Grease Type	Polyrex EM (-20F +300F)
Blower	None
Current @ Voltage	5.600 A @ 230.0 V 5.800 A @ 208.0 V 2.800 A @ 460.0 V
Design Code	B
Drip Cover	No Drip Cover
Duty Rating	CONT
Efficiency @ 100% Load	88.5 %
Electrically Isolated Bearing	Not Electrically Isolated
Feedback Device	NO FEEDBACK
Front Shaft Indicator	None
Heater Indicator	No Heater

Part detail

Revision	D
Type	AC
Mech. spec.	35E6248
Base	
Status	PRD/A
Elec. spec.	35WGZ965
Layout	35LYE6248
Eff. date	06-07-2024
CD Diagram	CD0005
Poles	04
Leads	9#18
Proprietary	False
Created date	09-08-2023

High Voltage Full Load Amps	2.8 a
Insulation Class	F
Inverter Code	Inverter Duty
KVA Code	M
Lifting Lugs	No Lifting Lugs
Locked Bearing Indicator	No Locked Bearing
Max Speed	2700 rpm
Motor Lead Quantity/Wire Size	9 @ 18 AWG
Motor Lead Termination	Flying Leads
Motor Standards	NEMA
Motor Type	3542M
Mounting Arrangement	F1
Number of Poles	4
Overall Length	15.56 IN
Power Factor	75
Product Family	General Purpose
Pulley End Bearing Type	Ball
Pulley Face Code	Standard
Pulley Shaft Indicator	Standard
Rodent Screen	None
RoHS Status	ROHS COMPLIANT
Service Factor	1.15
Shaft Diameter	0.875 IN
Shaft Ground Indicator	No Shaft Grounding
Shaft Rotation	Reversible
Shaft Slinger Indicator	No Slinger
Speed	1765 rpm
Speed Code	Single Speed
Starting Method	Direct on line
Thermal Device - Bearing	None
Thermal Device - Winding	None
Vibration Sensor Indicator	No Vibration Sensor
Winding Thermal 1	None
Winding Thermal 2	None

Nameplate

NP4423A01A01L														
CAT #	SPM3558T						WGT	62	LBS					
SPEC	35E6248Z965						ENCL	TEFC						
SER #							CC	010A	IP	54				
HP	2		MAG CUR	3.4/1.7										
VOLTS	230/460						NEMA NOM. EFF	88.5						
AMPS	5.6/2.8						PF	75						
RATING	40C AMB-CONT													
RPM	1765						MAX RPM	2700						
FRAME	145T	HZ	60	CODE	M	CLASS	F							
SER.F.	1.15	SF AMP	6.3/3.15			PH	3	DES	B					
DE	6205		ODE	6203										
LUBRICATION	POLYREX EM													
ID LOGO	INVERTER TYPE		VPWM	CHP	60	TO	90	1.5:1						
ID LOGO	WK2	0.303	CT	6	TO	60	10:1							
ID LOGO	SL HZ	1.3	VT	3	TO	60	20:1							
							QR							
YR														

AC Induction Motor Performance Data

Record # 96357

Preliminary Data Sheet

Winding: 35WGZ965-R001		Type: 3542M		Enclosure: TEFC	
Nameplate Data			460 V, 60 Hz: High Voltage Connection		
Rated Output (HP)	2		Full Load Torque	5.96 LB-FT	
Volts	230/460		Start Configuration	direct on line	
Full Load Amps	5.6/2.8		Breakdown Torque	26 LB-FT	
R.P.M.	1765		Pull-up Torque	16.9 LB-FT	
Hz	60 Phase	3	Locked-rotor Torque	18.4 LB-FT	
NEMA Design Code	B KVA Code	M	Starting Current	27.1 A	
Service Factor (S.F.)	1.15		No-load Current	1.67 A	
NEMA Nom. Eff.	88.5 Power Factor	75	Line-line Res. @ 25°C	6.21 Ω	
Rating - Duty	40C AMB-CONT		Temp. Rise @ Rated Load	52°C	
S.F. Amps	6.3/3.15		Temp. Rise @ S.F. Load	61°C	
			Locked-rotor Power Factor	50.7	
			Rotor inertia	0.303 lb-ft ²	

Load Characteristics 460 V, 60 Hz, 2 HP

% of Rated Load	25	50	75	100	125	150	S.F.
Power Factor	34	53	67	75	81	84	79
Efficiency	79.3	86.5	88.4	88.6	87.9	86.6	88.2
Speed	1793	1785	1776	1767	1757	1746	1761
Line amperes	1.76	2.01	2.37	2.81	3.32	3.88	3.12

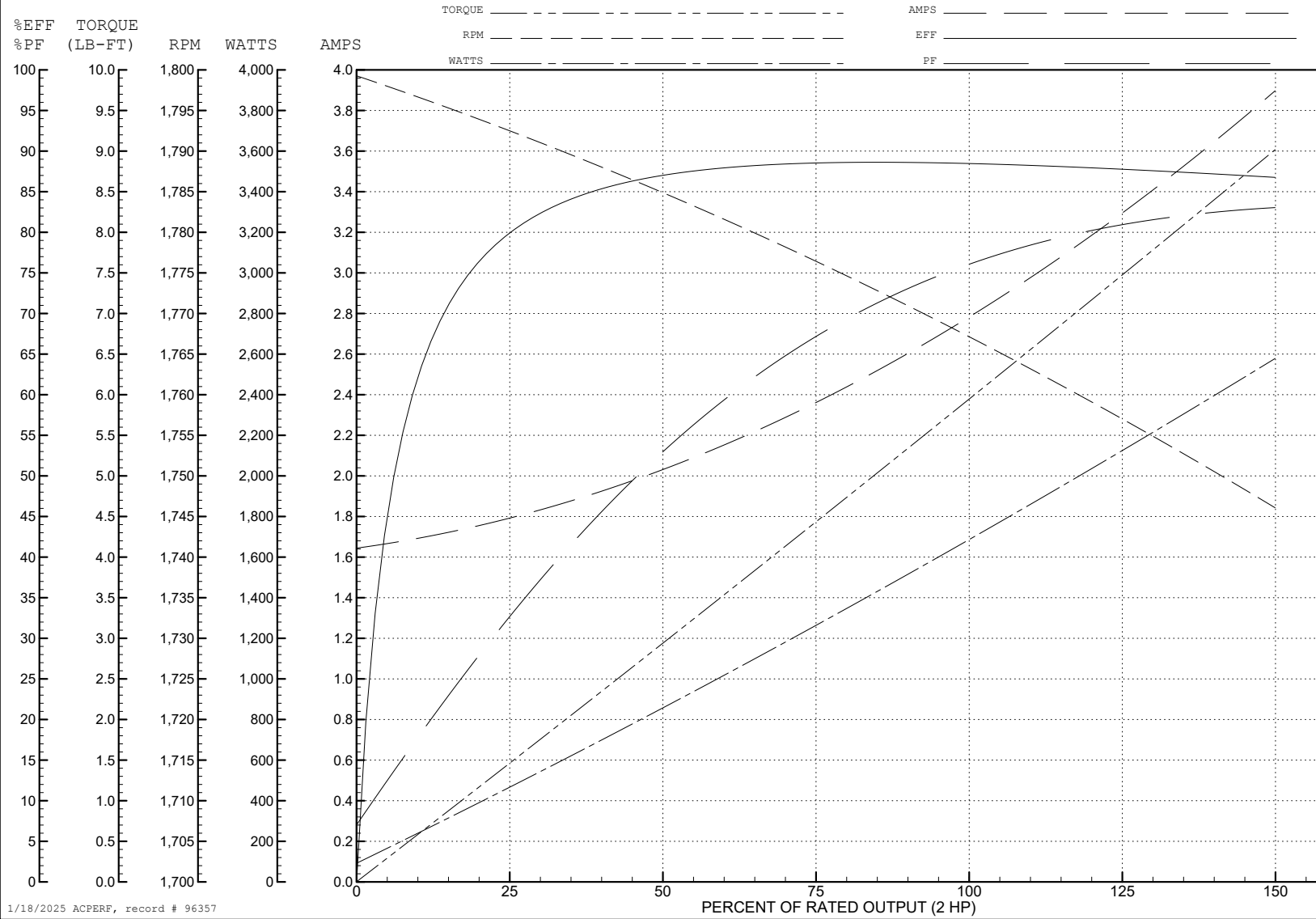
ABB Motors and Mechanical Inc.

WINDING # 35WGZ965

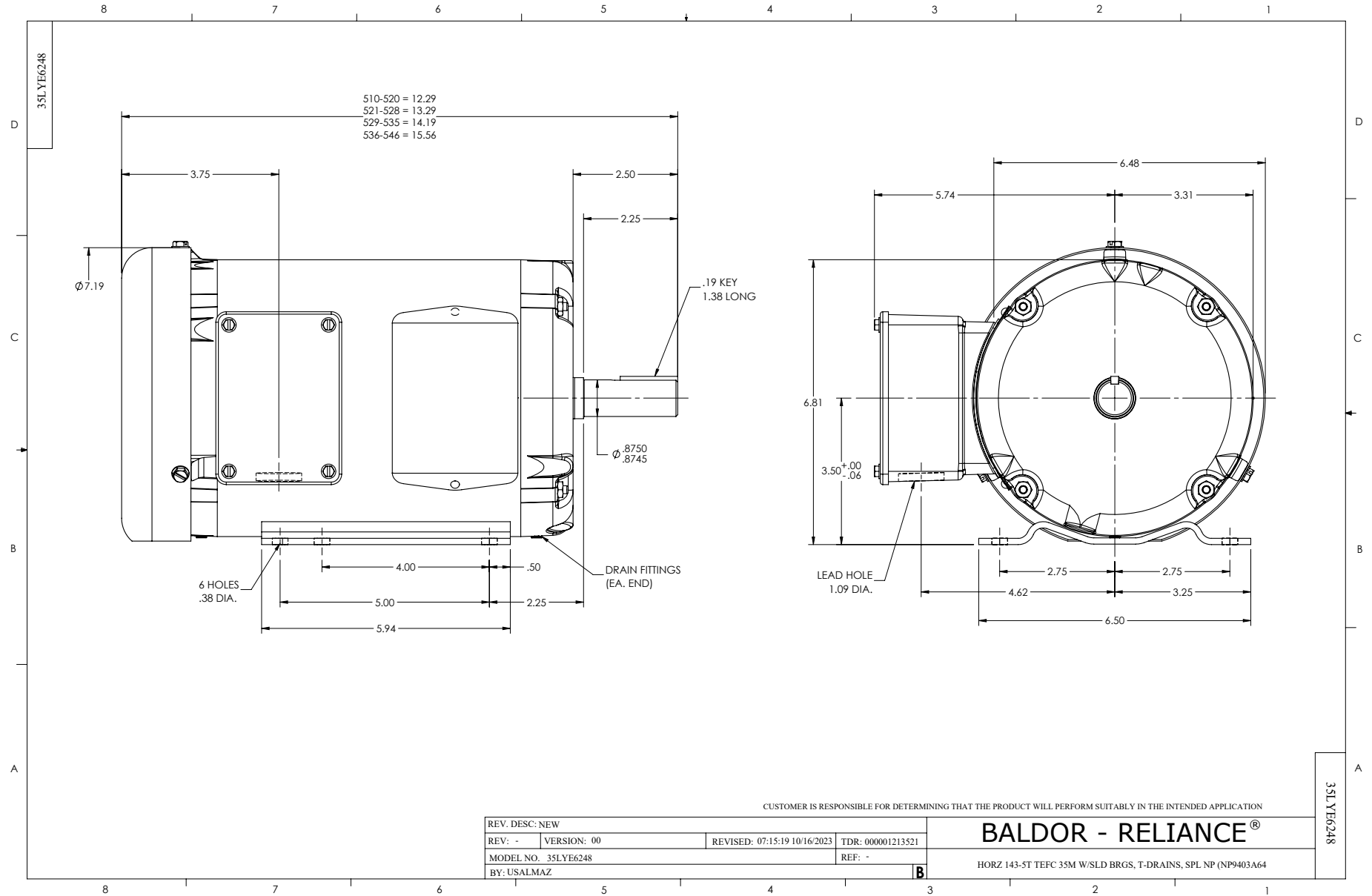
Typical performance - not guaranteed values.

2 HP 3 PH 60 HZ 1765 RPM 460 V 3542M

TORQUES (LB-FT): PO=26 PU=16.9 LR=18.4 LRA=27.1



1/18/2025 ACPERF, record # 96357



CD0005



LOW VOLTAGE
(2Y)



LINE

HIGH VOLTAGE
(1Y)



LINE

NOTES:

1. INTERCHANGE ANY TWO LINE LEADS TO REVERSE ROTATION.
2. OPTIONAL THERMOSTATS ARE PROVIDED WHEN SPECIFIED.
3. ACTUAL NUMBER OF INTERNAL PARALLEL CIRCUITS MAY BE A MULTIPLE OF THOSE SHOWN ABOVE.
4. LEAD COLORS ARE OPTIONAL. LEADS MUST ALWAYS BE NUMBERED AS SHOWN.

CD0005

REV. DESC: REVISE TO SHOW OPTIONAL COLORS			
REV. LTR: E	BY: JLP	REVISED: 01/19/99 10:15	TDR: 0171435
S00000		FILE: AAA00005140	MDL: -
		MTL: -	

BALDOR ELECTRIC Co.

3PH, DV, 9 LEADS