

BALDOR • RELIANCE

Customer information packet

SPM3556

1HP, 1170RPM, 3PH, 60HZ, 56H, 3532M, TEFC, F1, N

Class - None

Division - Not Applicable

Specifications

Enclosure	TEFC
Frame	56H
Frame Material	Steel
Frequency	60.00 Hz
Haz Area Class and Group	None
Haz Area Division	Not Applicable
Motor Letter Type	Three Phase
Output @ Frequency	1.000 HP @ 60 HZ
Phase	3
Synchronous Speed @ Frequency	1200 RPM @ 60 HZ
Voltage @ Frequency	460.0 V @ 60 HZ 230.0 V @ 60 HZ
Agency Approvals	CURUSEEV NEMA PREMIUM WEEE
Ambient Temperature	40 °C
Auxillary Box	No Auxillary Box
Auxillary Box Lead Termination	None
Base Indicator	Rigid
Bearing Grease Type	Polyrex EM (-20F +300F)
Blower	None
Current @ Voltage	3.320 A @ 230.0 V 3.500 A @ 208.0 V 1.660 A @ 460.0 V
Design Code	B
Drip Cover	No Drip Cover
Duty Rating	CONT
Efficiency @ 100% Load	84.0 %
Electrically Isolated Bearing	Not Electrically Isolated
Feedback Device	NO FEEDBACK
Front Shaft Indicator	None
Heater Indicator	No Heater

Part detail

Revision	B
Type	AC
Mech. spec.	35E6271
Base	
Status	PRD/A
Elec. spec.	35WGG824
Layout	35LYE6271
Eff. date	06-07-2024
CD Diagram	CD0005
Poles	06
Leads	9#18
Proprietary	False
Created date	09-08-2023

High Voltage Full Load Amps	1.7 a
Insulation Class	F
Inverter Code	Inverter Ready
KVA Code	J
Lifting Lugs	No Lifting Lugs
Locked Bearing Indicator	No Locked Bearing
Max Speed	1800 rpm
Motor Lead Quantity/Wire Size	9 @ 18 AWG
Motor Lead Termination	Flying Leads
Motor Standards	NEMA
Motor Type	3532M
Mounting Arrangement	F1
Number of Poles	6
Overall Length	13.78 IN
Power Factor	67
Product Family	General Purpose
Pulley End Bearing Type	Ball
Pulley Face Code	Standard
Pulley Shaft Indicator	Standard
Rodent Screen	None
RoHS Status	ROHS COMPLIANT
Service Factor	1.15
Shaft Diameter	0.625 IN
Shaft Ground Indicator	No Shaft Grounding
Shaft Rotation	Reversible
Shaft Slinger Indicator	No Slinger
Speed	1170 rpm
Speed Code	Single Speed
Starting Method	Direct on line
Thermal Device - Bearing	None
Thermal Device - Winding	None
Vibration Sensor Indicator	No Vibration Sensor
Winding Thermal 1	None
Winding Thermal 2	None

Nameplate

NP4423A01A01L

CAT #	SPM3556		WGT	47	LBS	
SPEC	35E6271G824		ENCL	TEFC		
SER #		CC	010A	IP	54	
HP	1	MAG CUR	2.06/1.03			
VOLTS	230/460		NEMA NOM. EFF	84		
AMPS	3.32/1.66		PF	67		
RATING	40C AMB-CONT					
RPM	1170		MAX RPM	1800		
FRAME	56H	HZ	60	CODE	J	CLASS F
SER.F.	1.15	SF AMP	3.68/1.84		PH 3	DES B
DE	6205		ODE	6203		
LUBRICATION	POLYREX EM					
ID LOGO	INVERTER TYPE	VPWM	CHP 60	TO 90	1.5:1	
ID LOGO	WK2 0.232	CT 6	TO 60	10:1		
ID LOGO	SL HZ 1.57	VT 3	TO 60	20:1		
YR					QR	

AC Induction Motor Performance Data

Record # 100796

Typical performance - not guaranteed values

Winding: 35WGG824-R001		Type: 3532M		Enclosure: TEFC	
Nameplate Data			460 V, 60 Hz: High Voltage Connection		
Rated Output (HP)	1	Full Load Torque	4.47 LB-FT		
Volts	230/460	Start Configuration	direct on line		
Full Load Amps	2.06/1.03	Breakdown Torque	12.7 LB-FT		
R.P.M.	1170	Pull-up Torque	7.4 LB-FT		
Hz	60	Locked-rotor Torque	9 LB-FT		
NEMA Design Code	B	Starting Current	9.5 A		
Service Factor (S.F.)	1.15	No-load Current	1.03 A		
NEMA Nom. Eff.	84	Line-line Res. @ 25°C	18.3 Ω		
Rating - Duty	40C AMB-CONT	Temp. Rise @ Rated Load	42°C		
S.F. Amps	3.68/1.84	Temp. Rise @ S.F. Load	50°C		
		Locked-rotor Power Factor	45.8		
		Rotor inertia	0.232 lb-ft ²		

Load Characteristics 460 V, 60 Hz, 1 HP

% of Rated Load	25	50	75	100	125	150	S.F.
Power Factor	29	46	59	67	72	75	70
Efficiency	74.5	82.7	84.4	84.2	82.9	80.7	83.4
Speed	1193	1186	1179	1171	1162	1151	1166
Line amperes	1.08	1.21	1.41	1.66	1.96	2.32	1.84

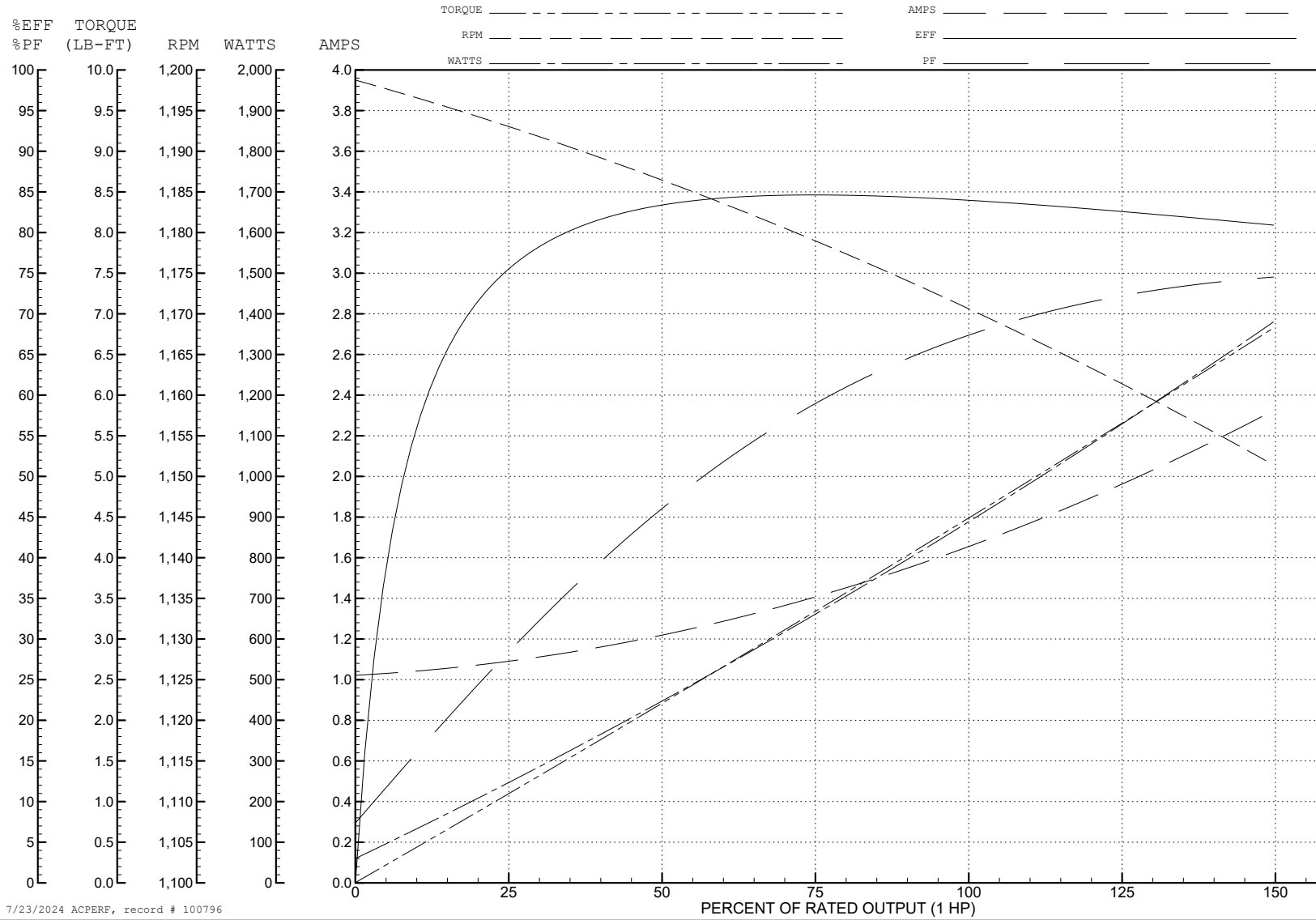
ABB Motors and Mechanical Inc.

WINDING # 35WGG824

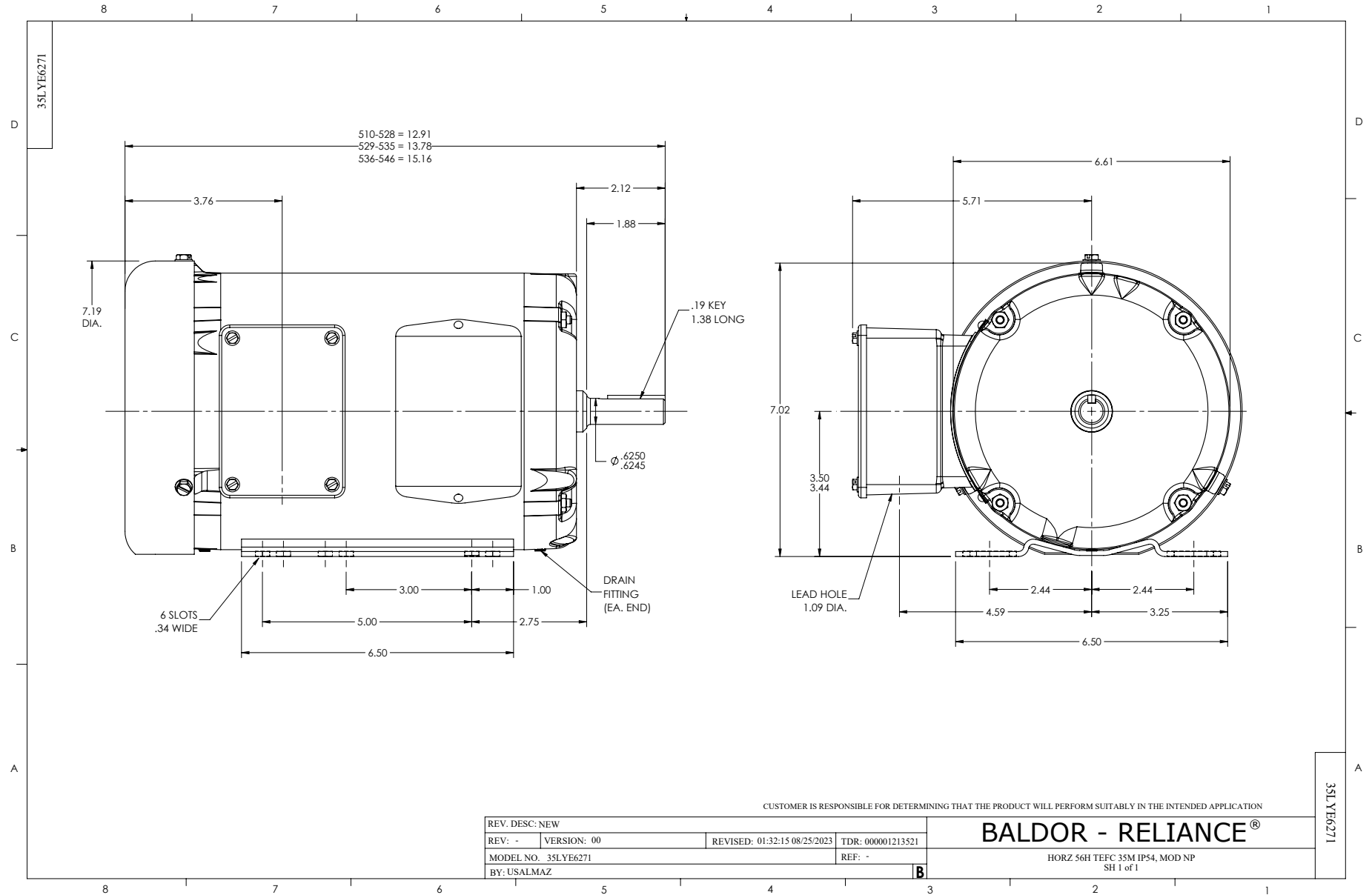
Typical performance - not guaranteed values.

1 HP 3 PH 60 HZ 1170 RPM 460 V 3532M

TORQUES (LB-FT): PO=12.7 PU=7.4 LR=9 LRA=9.5



7/23/2024 ACPERF, record # 100796



CD0005



LOW VOLTAGE
(2Y)



LINE

HIGH VOLTAGE
(1Y)



LINE

NOTES:

1. INTERCHANGE ANY TWO LINE LEADS TO REVERSE ROTATION.
2. OPTIONAL THERMOSTATS ARE PROVIDED WHEN SPECIFIED.
3. ACTUAL NUMBER OF INTERNAL PARALLEL CIRCUITS MAY BE A MULTIPLE OF THOSE SHOWN ABOVE.
4. LEAD COLORS ARE OPTIONAL. LEADS MUST ALWAYS BE NUMBERED AS SHOWN.

CD0005

REV. DESC: REVISE TO SHOW OPTIONAL COLORS			
REV. LTR: E	BY: JLP	REVISED: 01/19/99 10:15	TDR: 0171435
S00000		FILE: AAA00005140	MDL: -
		MTL: -	

BALDOR ELECTRIC Co.

3PH, DV, 9 LEADS