

ABB BALDOR RELIANCE III

Customer information packet SPM3550

1.5HP, 3500RPM, 3PH, 60HZ, 56H, 3520M, TEFC, F1

Class - None

Division - Not Applicable

Specifications

Enclosure	TEFC
Frame	56H
Frame Material	Steel
Frequency	60.00 Hz
Haz Area Class and Group	None
Haz Area Division	Not Applicable
Motor Letter Type	Three Phase
Output @ Frequency	1.500 HP @ 60 HZ
Phase	3
Synchronous Speed @ Frequency	3600 RPM @ 60 HZ
Voltage @ Frequency	230.0 V @ 60 HZ 460.0 V @ 60 HZ
Agency Approvals	WEEE NEMA PREMIUM 4
Ambient Temperature	40 °C
Auxiliary Box	NO AUXILLARY BOX
Auxiliary Box Lead Termination	None
Base Indicator	Rigid
Bearing Grease Type	Polyrex EM (-20F +300F)
Blower	None
Current @ Voltage	2.050 A @ 460.0 V 4.100 A @ 230.0 V
Design Code	B
Drip Cover	No Drip Cover
Duty Rating	CONT
Efficiency @ 100% Load	85.5 %
Electrically Isolated Bearing	Not Electrically Isolated
Feedback Device	NO FEEDBACK
Front Shaft Indicator	None
Heater Indicator	No Heater
High Voltage Full Load Amps	2.1 a
Insulation Class	F

Part Detail

Revision	B
Type	AC
Mech. spec.	35E6271
Base	
Status	PRD/A
Elec. spec.	35WGM747
Layout	35LYE6271
Eff. date	06-07-2024
CD Diagram	CD0005
Poles	02
Leads	9#18
Proprietary	False
Created date	09-08-2023

Inverter Code	Inverter Duty
KVA Code	N
Lifting Lugs	No Lifting Lugs
Locked Bearing Indicator	No Locked Bearing
Max Speed	5400 rpm
Motor Lead Quantity/Wire Size	9 @ 18 AWG
Motor Lead Termination	Flying Leads
Motor Standards	NEMA
Motor Type	3520M
Mounting Arrangement	F1
Number of Poles	2
Overall Length	12.91 IN
Power Factor	81
Product Family	General Purpose
Pulley End Bearing Type	Ball
Pulley Face Code	Standard
Pulley Shaft Indicator	Standard
Rodent Screen	None
RoHS Status	ROHS COMPLIANT
Service Factor	1.15
Shaft Diameter	0.625 IN
Shaft Ground Indicator	No Shaft Grounding
Shaft Rotation	Reversible
Shaft Slinger Indicator	No Slinger
Speed	3500 rpm
Speed Code	Single Speed
Starting Method	Direct on line
Thermal Device - Bearing	None
Thermal Device - Winding	None
Vibration Sensor Indicator	No Vibration Sensor
Winding Thermal 1	None
Winding Thermal 2	None

Nameplate

NP4423A01A01L

CAT #	SPM3550		WGT	38	LBS	
SPEC	35E6271M747		ENCL	TEFC		
SER #		CC	010A	IP	54	
HP	1.5	MAG CUR	2.22/1.11			
VOLTS	230/460		NEMA NOM. EFF	85.5		
AMPS	4.1/2.05		PF	81		
RATING	40C AMB-CONT					
RPM	3500		MAX RPM	5400		
FRAME	56H	HZ	60	CODE	N	CLASS F
SER.F.	1.15	SF AMP	5.5/2.25		PH	3 DES B
DE	6205	ODE	6203			
LUBRICATION	POLYREX EM					
ID LOGO	INVERTER TYPE	VPWM	CHP	60	TO	90 1.5:1
ID LOGO	WK2 0.06	CT 6	TO	60	10:1	
ID LOGO	SL HZ 1.7	VT 3	TO	60	20:1	
YR			QR			

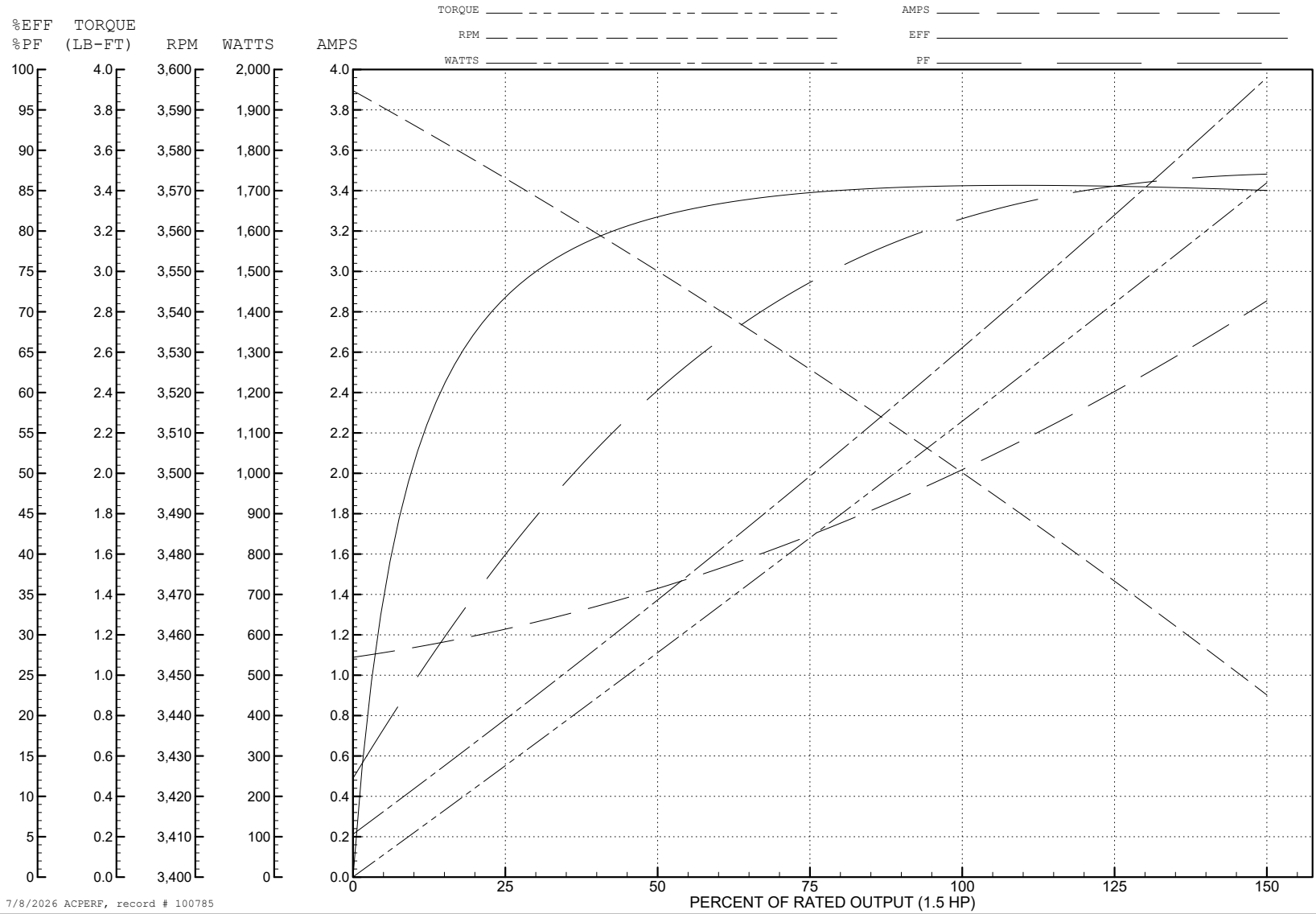
ABB Motors and Mechanical Inc.

WINDING # 35WGM747

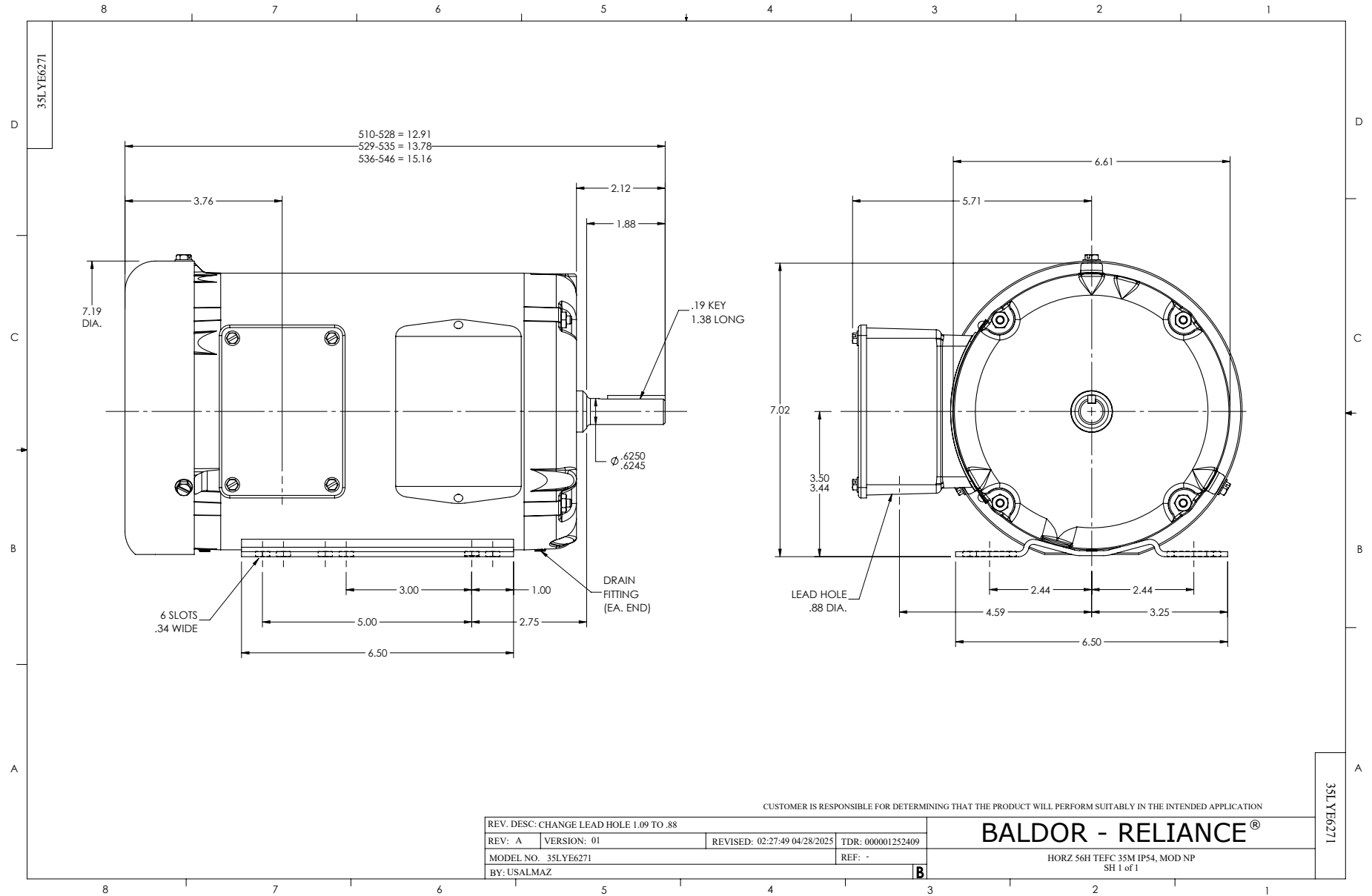
1.5 HP 3 PH 60 HZ 3500 RPM 460 V 3520M

Typical performance - not guaranteed values.

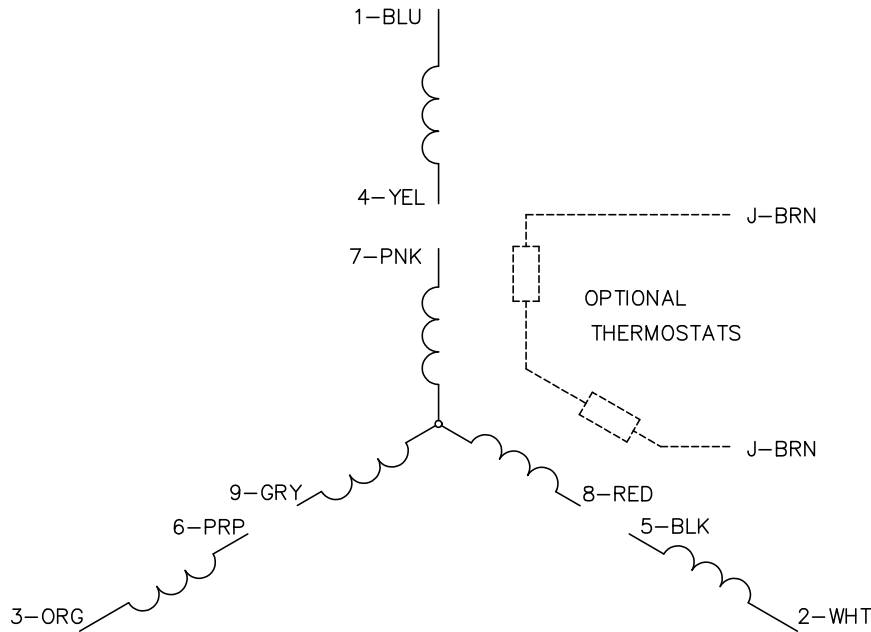
TORQUES (LB-FT): PO=12.5 PU=7.8 LR=11.1 LRA=22.6



7/8/2026 ACPERF, record # 100785



CD0005



LOW VOLTAGE
(2Y)



LINE

HIGH VOLTAGE
(1Y)



LINE

NOTES:

1. INTERCHANGE ANY TWO LINE LEADS TO REVERSE ROTATION.
2. OPTIONAL THERMOSTATS ARE PROVIDED WHEN SPECIFIED.
3. ACTUAL NUMBER OF INTERNAL PARALLEL CIRCUITS MAY BE A MULTIPLE OF THOSE SHOWN ABOVE.
4. LEAD COLORS ARE OPTIONAL. LEADS MUST ALWAYS BE NUMBERED AS SHOWN.

CD0005

REV. DESC: REVISE TO SHOW OPTIONAL COLORS			
REV. LTR: E	BY: JLP	REVISED: 01/19/99 10:15	TDR: 0171435
S00000		FILE: AAA00005140	MDL: -
		MTL: -	

BALDOR ELECTRIC Co.

3PH, DV, 9 LEADS