

BALDOR • RELIANCE

Customer information packet

SPM3311T

7.5HP, 1775RPM, 3PH, 60HZ, 213T, 3750M, OPSB, F

Class - None

Division - Not Applicable

Specifications

Enclosure	OPSB
Frame	213T
Frame Material	Steel
Frequency	60.00 Hz
Haz Area Class and Group	None
Haz Area Division	Not Applicable
Motor Letter Type	Three Phase
Output @ Frequency	7.500 HP @ 60 HZ
Phase	3
Synchronous Speed @ Frequency	1800 RPM @ 60 HZ
Voltage @ Frequency	230.0 V @ 60 HZ 460.0 V @ 60 HZ
Agency Approvals	CURUSEEV NEMA PREMIUM WEEE
Ambient Temperature	40 °C
Auxillary Box	No Auxillary Box
Auxillary Box Lead Termination	None
Base Indicator	Rigid
Bearing Grease Type	Polyrex EM (-20F +300F)
Blower	None
Current @ Voltage	10.000 A @ 460.0 V 20.000 A @ 230.0 V
Design Code	A
Drip Cover	No Drip Cover
Duty Rating	CONT
Efficiency @ 100% Load	92.4 %
Electrically Isolated Bearing	Not Electrically Isolated
Feedback Device	NO FEEDBACK
Front Shaft Indicator	None
Heater Indicator	No Heater
High Voltage Full Load Amps	10.0 a

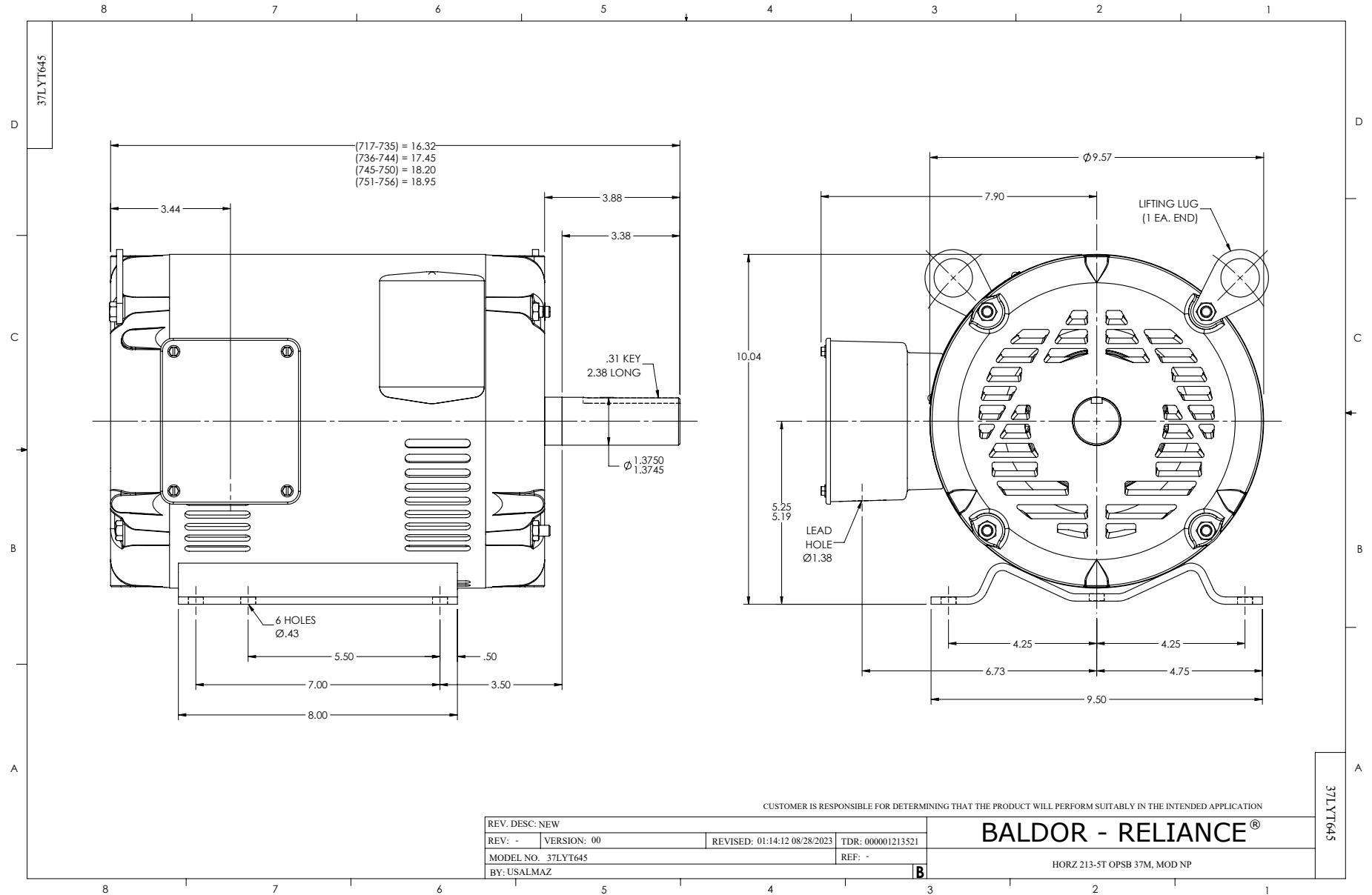
Part detail

Revision	C
Type	AC
Mech. spec.	37T645
Base	
Status	PRD/A
Elec. spec.	37WGZ670
Layout	37LYT645
Eff. date	05-03-2024
CD Diagram	CD0005
Poles	04
Leads	9#14 Y
Proprietary	False
Created date	09-05-2023

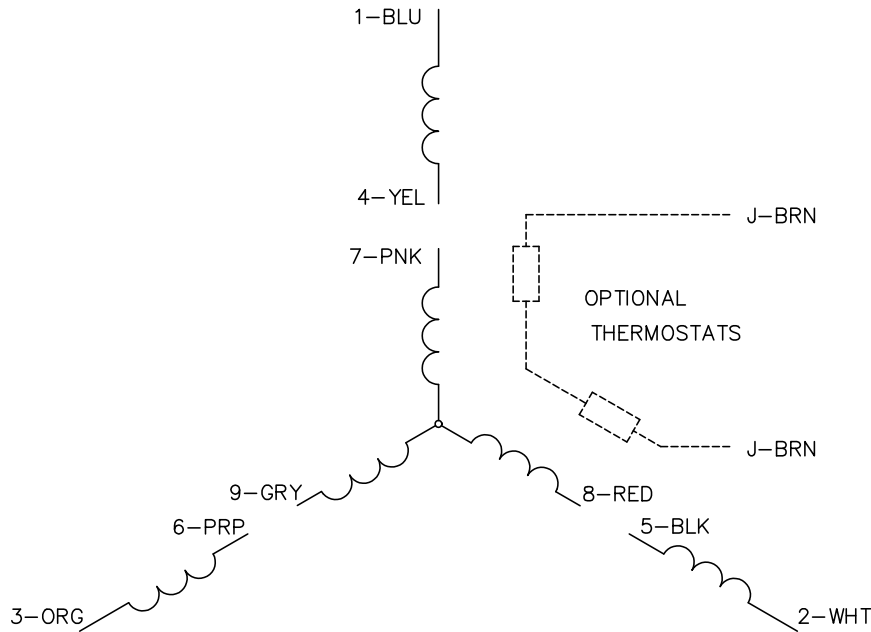
Insulation Class	F
Inverter Code	Inverter Duty
KVA Code	L
Lifting Lugs	Vertical Lifting Lugs
Locked Bearing Indicator	No Locked Bearing
Max Speed	2700 rpm
Motor Lead Quantity/Wire Size	9 @ 14 AWG
Motor Lead Termination	Flying Leads
Motor Standards	NEMA
Motor Type	3750M
Mounting Arrangement	F1
Number of Poles	4
Overall Length	18.20 IN
Power Factor	78
Product Family	General Purpose
Pulley End Bearing Type	Ball
Pulley Face Code	Standard
Pulley Shaft Indicator	Standard
Rodent Screen	None
RoHS Status	ROHS COMPLIANT
Service Factor	1.15
Shaft Diameter	1.375 IN
Shaft Ground Indicator	No Shaft Grounding
Shaft Rotation	Reversible
Shaft Slinger Indicator	No Slinger
Speed	1775 rpm
Speed Code	Single Speed
Starting Method	Direct on line
Thermal Device - Bearing	None
Thermal Device - Winding	None
Vibration Sensor Indicator	No Vibration Sensor
Winding Thermal 1	None
Winding Thermal 2	None

Nameplate

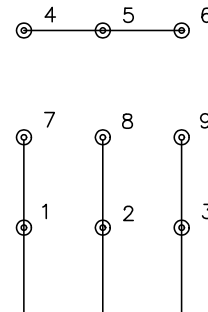
NP4423A01A01L										
CAT #	SPM3311T					WGT	158		LBS	
SPEC	37T645Z670					ENCL	OPSB			
SER #						CC	010A	IP	22	
HP	7.5					MAG CUR	9.8/4.9			
VOLTS	230/460					NEMA NOM. EFF			92.4	
AMPS	20/10					PF	78			
RATING	40C AMB-CONT									
RPM	1775					MAX RPM	2700			
FRAME	213T	HZ	60			CODE	L	CLASS	F	
SER.F.	1.15	SF AMP	22/11			PH	3	DES	A	
DE	6307			ODE	6206					
LUBRICATION	POLYREX EM									
ID LOGO		INVERTER TYPE		VPWM		CHP	60	TO	90	1.5:1
ID LOGO	WK2	1.18	CT	6		TO	60	10:1		
ID LOGO	SL HZ	0.8	VT	3		TO	60	20:1		
						QR				
YR										



CD0005

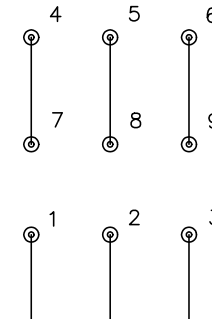


LOW VOLTAGE
(2Y)



LINE

HIGH VOLTAGE
(1Y)



LINE

NOTES:

1. INTERCHANGE ANY TWO LINE LEADS TO REVERSE ROTATION.
2. OPTIONAL THERMOSTATS ARE PROVIDED WHEN SPECIFIED.
3. ACTUAL NUMBER OF INTERNAL PARALLEL CIRCUITS MAY BE A MULTIPLE OF THOSE SHOWN ABOVE.
4. LEAD COLORS ARE OPTIONAL. LEADS MUST ALWAYS BE NUMBERED AS SHOWN.

CD0005

REV. DESC: REVISE TO SHOW OPTIONAL COLORS			
REV. LTR: E	BY: JLP	REVISED: 01/19/99 10:15	TDR: 0171435
S00000		FILE: AAA00005140	MDL: -
		MTL: -	

BALDOR ELECTRIC Co.

3PH, DV, 9 LEADS