

**BALDOR® • RELIANCE™**

---

# Customer information packet

## SPM31158

3HP, 3465RPM, 3PH, 60HZ, 56H, 3540M, ODP, F1, N

Class - None

Division - Not Applicable

Copyright © All product information within this document is subject to ABB Motors and Mechanical Inc. copyright © protection, unless otherwise noted.

1/18/2025 10:17:21 PM

## Specifications

Enclosure	ODP
Frame	56H
Frame Material	Steel
Frequency	60.00 Hz
Haz Area Class and Group	None
Haz Area Division	Not Applicable
Motor Letter Type	Three Phase
Output @ Frequency	3.000 HP @ 60 HZ
Phase	3
Synchronous Speed @ Frequency	3600 RPM @ 60 HZ
Voltage @ Frequency	460.0 V @ 60 HZ 230.0 V @ 60 HZ
Agency Approvals	CURUSEEV NEMA PREMIUM WEEE
Ambient Temperature	40 °C
Auxillary Box	No Auxillary Box
Auxillary Box Lead Termination	None
Base Indicator	Rigid
Bearing Grease Type	Polyrex EM (-20F +300F)
Blower	None
Current @ Voltage	6.900 A @ 230.0 V 7.900 A @ 208.0 V 3.450 A @ 460.0 V
Design Code	B
Drip Cover	No Drip Cover
Duty Rating	CONT
Efficiency @ 100% Load	88.5 %
Electrically Isolated Bearing	Not Electrically Isolated
Feedback Device	NO FEEDBACK
Front Shaft Indicator	None
Heater Indicator	No Heater

## Part detail

Revision	C
Type	AC
Mech. spec.	35E6250
Base	
Status	PRD/A
Elec. spec.	35WGZ969
Layout	35LYE6250
Eff. date	06-07-2024
CD Diagram	CD0005
Poles	02
Leads	9#18
Proprietary	False
Created date	09-08-2023

High Voltage Full Load Amps	3.5 a
Insulation Class	F
Inverter Code	Inverter Duty
KVA Code	K
Lifting Lugs	No Lifting Lugs
Locked Bearing Indicator	No Locked Bearing
Max Speed	5400 rpm
Motor Lead Quantity/Wire Size	9 @ 18 AWG
Motor Lead Termination	Flying Leads
Motor Standards	NEMA
Motor Type	3540M
Mounting Arrangement	F1
Number of Poles	2
Overall Length	14.00 IN
Power Factor	92
Product Family	General Purpose
Pulley End Bearing Type	Ball
Pulley Face Code	Standard
Pulley Shaft Indicator	Standard
Rodent Screen	None
RoHS Status	ROHS COMPLIANT
Service Factor	1.15
Shaft Diameter	0.625 IN
Shaft Ground Indicator	No Shaft Grounding
Shaft Rotation	Reversible
Shaft Slinger Indicator	No Slinger
Speed	3465 rpm
Speed Code	Single Speed
Starting Method	Direct on line
Thermal Device - Bearing	None
Thermal Device - Winding	None
Vibration Sensor Indicator	No Vibration Sensor
Winding Thermal 1	None
Winding Thermal 2	None



## AC Induction Motor Performance Data

Record # 100814

Preliminary Data Sheet

Winding: 35WGZ969-R002		Type: 3540M	Enclosure: ODP	
<b>Nameplate Data</b>			<b>460 V, 60 Hz: High Voltage Connection</b>	
Rated Output (HP)		3	Full Load Torque	4.53 lb-ft
Volts		230/460	Start Configuration	direct on line
Full Load Amps		6.9/3.45	Breakdown Torque	21.4 lb-ft
R.P.M.		3465	Pull-up Torque	12.2 lb-ft
Hz	60 Phase	3	Locked-rotor Torque	19.3 lb-ft
NEMA Design Code	B KVA Code	K	Starting Current	34.6 A
Service Factor (S.F.)		1.15	No-load Current	1.29 A
NEMA Nom. Eff.	88.5 Power Factor	92	Line-line Res. @ 25°C	4.7 Ω
Rating - Duty		40C AMB-CONT	Temp. Rise @ Rated Load	32°C
S.F. Amps		7.96/3.98	Temp. Rise @ S.F. Load	68°C
			Locked-rotor Power Factor	42.1
			Rotor inertia	0.0885 lb-ft <sup>2</sup>

## Load Characteristics 460 V, 60 Hz, 3 HP

% of Rated Load	25	50	75	100	125	150	S.F.
Power Factor	60	79	86	90	92	92	91
Efficiency	74	82.8	85.4	86	85.7	84.8	85.8
Speed	3568	3541	3513	3483	3450	3414	3463
Line amperes	1.6	2.16	2.86	3.63	4.48	5.39	4.14

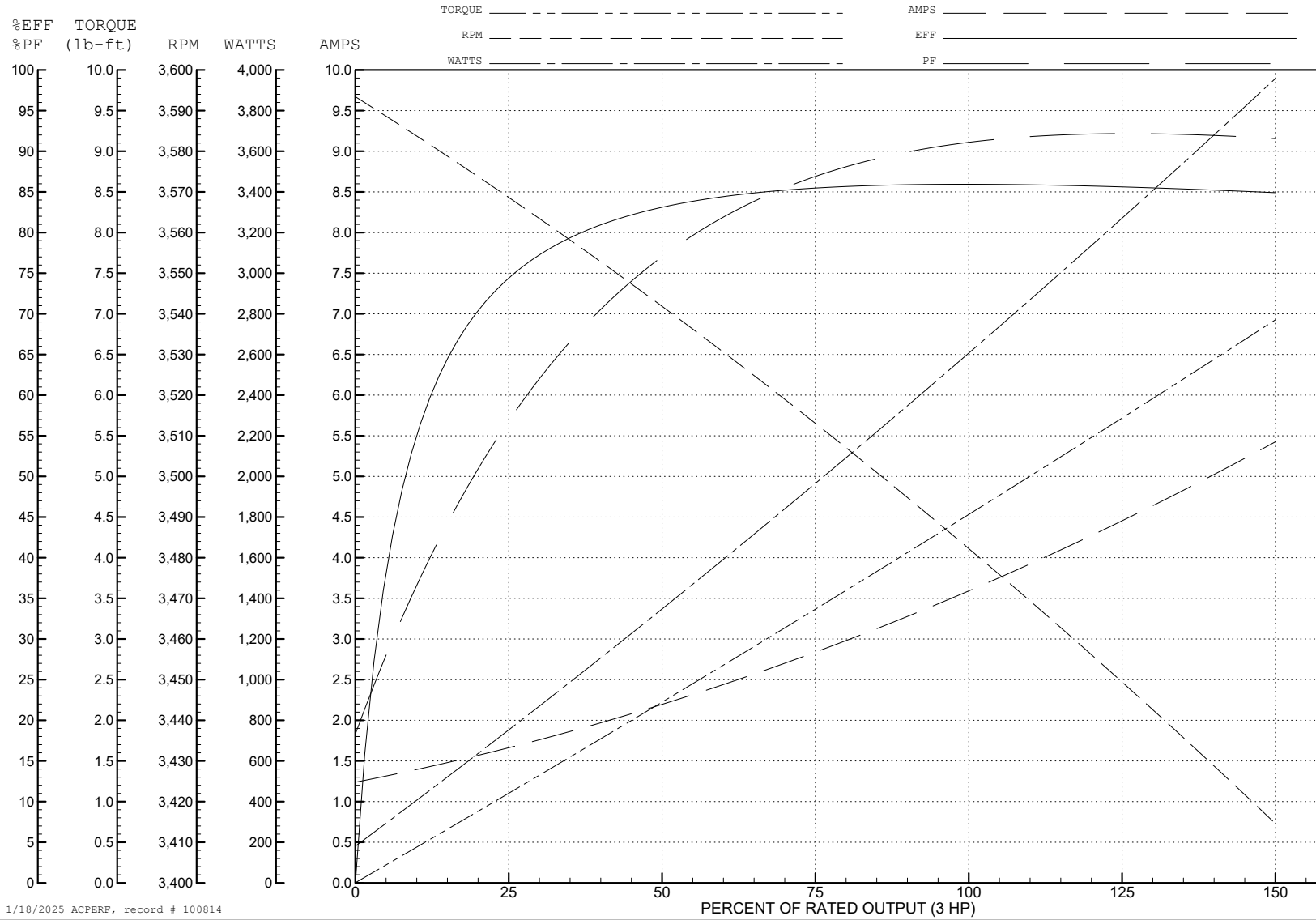
ABB Motors and Mechanical Inc.

WINDING # 35WGZ969

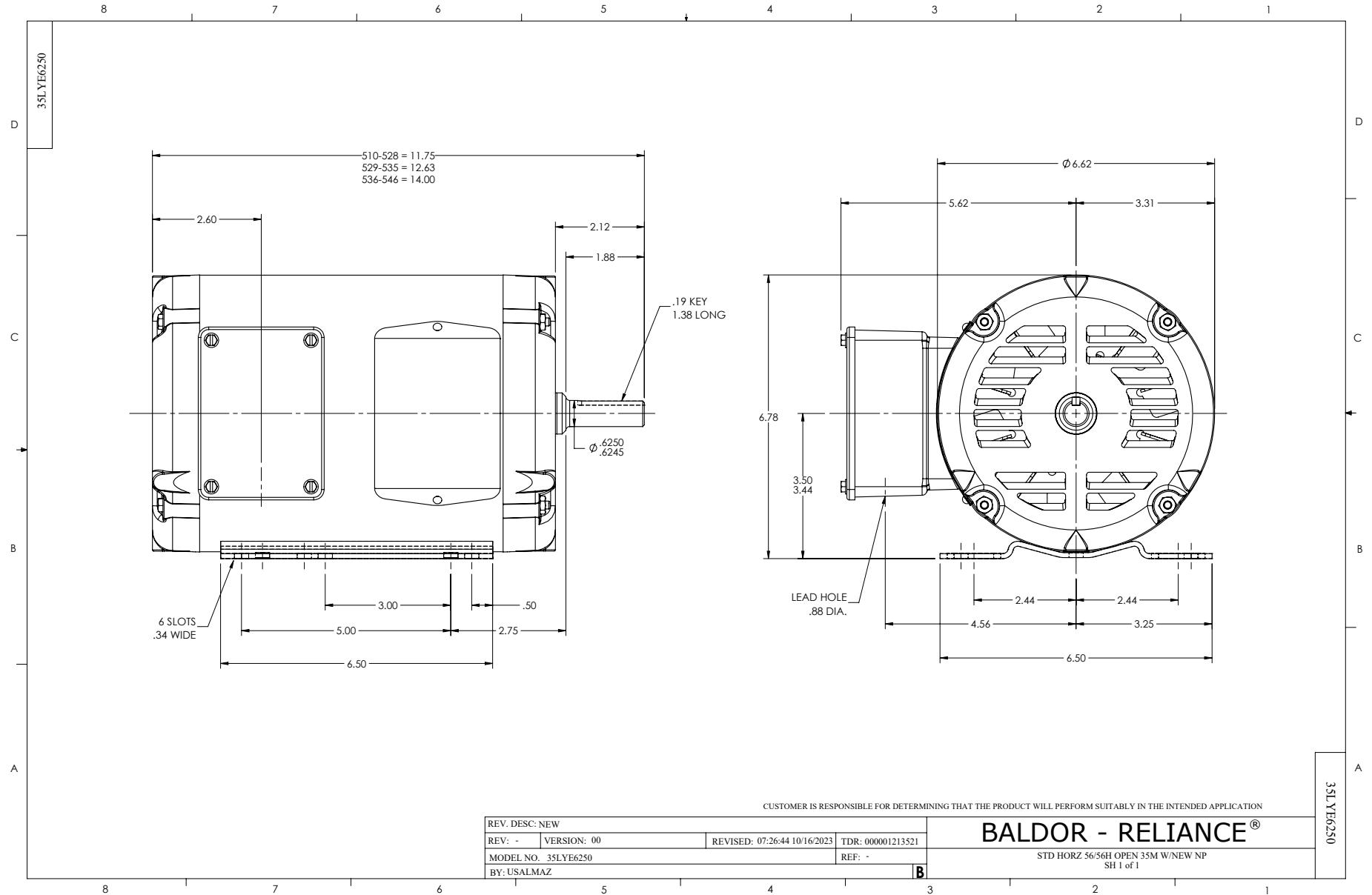
Typical performance - not guaranteed values.

3 HP 3 PH 60 HZ 3465 RPM 460 V 3540M

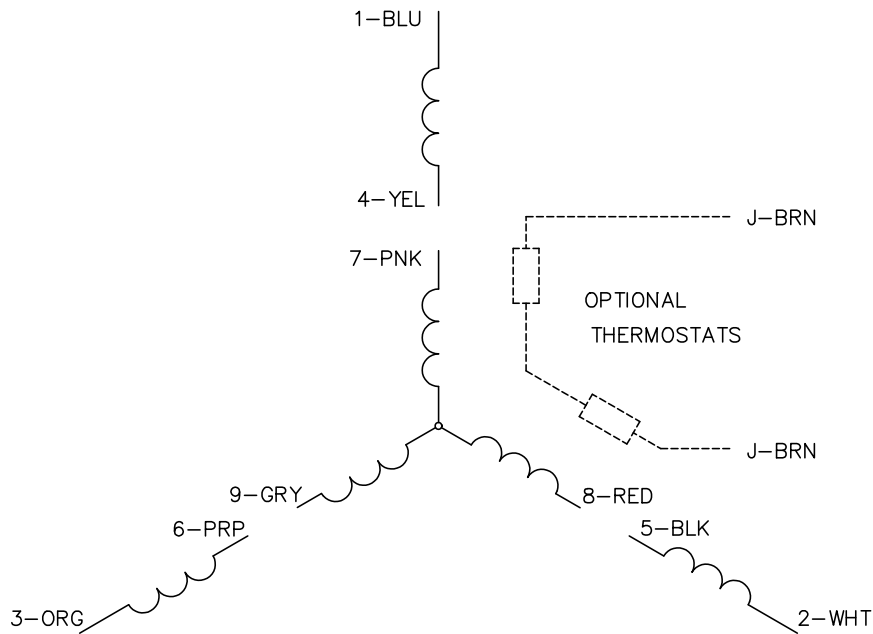
TORQUES(lb-ft): PO=21.4 PU=12.2 LR=19.3 LRA=34.6



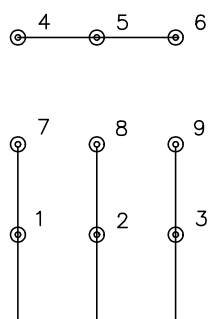
1/18/2025 ACPERF, record # 100814



CD0005

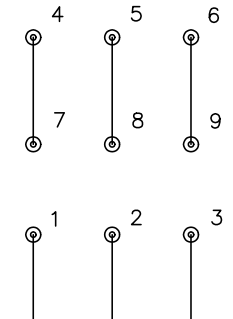


LOW VOLTAGE (2Y)



LINE

HIGH VOLTAGE (1Y)



LINE

NOTES:

1. INTERCHANGE ANY TWO LINE LEADS TO REVERSE ROTATION.
2. OPTIONAL THERMOSTATS ARE PROVIDED WHEN SPECIFIED.
3. ACTUAL NUMBER OF INTERNAL PARALLEL CIRCUITS MAY BE A MULTIPLE OF THOSE SHOWN ABOVE.
4. LEAD COLORS ARE OPTIONAL. LEADS MUST ALWAYS BE NUMBERED AS SHOWN.

CD0005

REV. DESC: REVISE TO SHOW OPTIONAL COLORS			
REV. LTR: E	BY: JLP	REVISED: 01/19/99 10:15	TDR: 0171435
S00000		FILE: AAA00005140	MDL: -
		MTL: -	

**BALDOR ELECTRIC Co.**

3PH, DV, 9 LEADS