

BALDOR • RELIANCE

Customer information packet

SPJPM3312T

10HP, 3500RPM, 3PH, 60HZ, 213JP, 3736M, OPSB, F

Class - None

Division - Not Applicable

Copyright © All product information within this document is subject to ABB Motors and Mechanical Inc. copyright © protection, unless otherwise noted.

6/18/2026 6:25:21 AM

Specifications

Enclosure	OPSB
Frame	213JP
Frame Material	Steel
Frequency	60.00 Hz
Haz Area Class and Group	None
Haz Area Division	Not Applicable
Motor Letter Type	Three Phase
Output @ Frequency	10.000 HP @ 60 HZ
Phase	3
Synchronous Speed @ Frequency	3600 RPM @ 60 HZ
Voltage @ Frequency	230.0 V @ 60 HZ 460.0 V @ 60 HZ
Agency Approvals	WEEE
Ambient Temperature	40 °C
Auxiliary Box	NO AUXILLARY BOX
Auxiliary Box Lead Termination	None
Base Indicator	Rigid
Bearing Grease Type	Polyrex EM (-20F +300F)
Blower	None
Current @ Voltage	11.500 A @ 460.0 V 23.000 A @ 230.0 V 24.000 A @ 208.0 V
Design Code	A
Drip Cover	No Drip Cover
Duty Rating	CONT
Efficiency @ 100% Load	91.7 %
Electrically Isolated Bearing	Not Electrically Isolated
Feedback Device	NO FEEDBACK
Front Shaft Indicator	None
Heater Indicator	No Heater
High Voltage Full Load Amps	11.5 a
Insulation Class	F

Part detail

Revision	A
Type	AC
Mech. spec.	37EE001
Base	
Status	PRD/A
Elec. spec.	37WGT238
Layout	37LYEE001
Eff. date	11-19-2025
CD Diagram	CD0005
Poles	02
Leads	9#14
Proprietary	False
Created date	08-13-2025

Inverter Code	Inverter Duty
KVA Code	J
Lifting Lugs	Standard Lifting Lugs
Locked Bearing Indicator	Locked Bearing
Max Speed	5400 rpm
Motor Lead Quantity/Wire Size	9 @ 14 AWG
Motor Lead Termination	Flying Leads
Motor Standards	NEMA
Motor Type	3736M
Mounting Arrangement	F1
Number of Poles	2
Overall Length	23.19 IN
Power Factor	90
Product Family	General Purpose
Pulley End Bearing Type	Ball
Pulley Face Code	C-Face
Pulley Shaft Indicator	Tapped & Key
Rodent Screen	Included
RoHS Status	ROHS NON-COMPLIANT
Service Factor	1.25
Shaft Diameter	1.250 IN
Shaft Ground Indicator	No Shaft Grounding
Shaft Rotation	Reversible
Shaft Slinger Indicator	No Slinger
Speed	3500 rpm
Speed Code	Single Speed
Starting Method	Direct on line
Thermal Device - Bearing	None
Thermal Device - Winding	None
Vibration Sensor Indicator	No Vibration Sensor
Winding Thermal 1	None
Winding Thermal 2	None

AC Induction Motor Performance Data

Record # 101129

Typical performance - not guaranteed values

Winding: 37WGT238-R015		Type: 3736M	Enclosure: OPSB
Nameplate Data		460 V, 60 Hz: High Voltage Connection	
Rated Output (HP)	10	Full Load Torque	15 LB-FT
Volts	230/460	Start Configuration	direct on line
Full Load Amps	23/11.5	Breakdown Torque	82 LB-FT
R.P.M.	3500	Pull-up Torque	28 LB-FT
Hz	60 Phase	Locked-rotor Torque	38 LB-FT
NEMA Design Code	A KVA Code	Starting Current	98 A
Service Factor (S.F.)	1.15	No-load Current	3.4 A
NEMA Nom. Eff.	91.7 Power Factor	Line-line Res. @ 25°C	0.786 Ω
Rating - Duty	40C AMB-CONT	Temp. Rise @ Rated Load	23°C
S.F. Amps	26/13	Temp. Rise @ S.F. Load	29°C
		Locked-rotor Power Factor	32.8
		Rotor inertia	0.329 lb-ft ²

Load Characteristics 460 V, 60 Hz, 10 HP

% of Rated Load	25	50	75	100	125	150	S.F.
Power Factor	67	86	89	90	88	87	89
Efficiency	85.6	90.9	92	91.8	91.1	90.1	91.4
Speed	3579	3557	3532	3507	3478	3448	3490
Line amperes	4.2	6.1	8.7	11.3	14.5	17.6	13.2

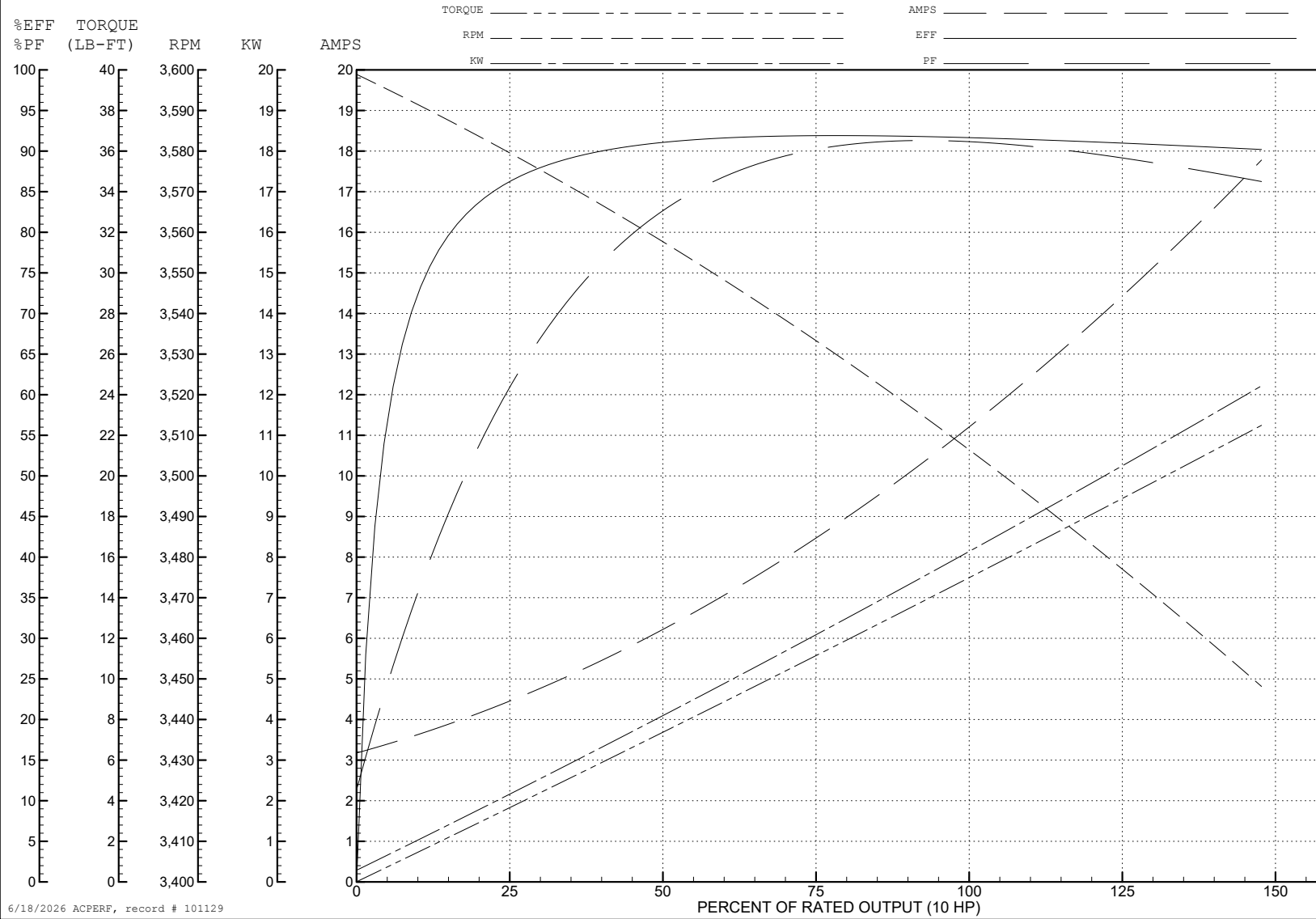
ABB Motors and Mechanical Inc.

WINDING # 37WGT238

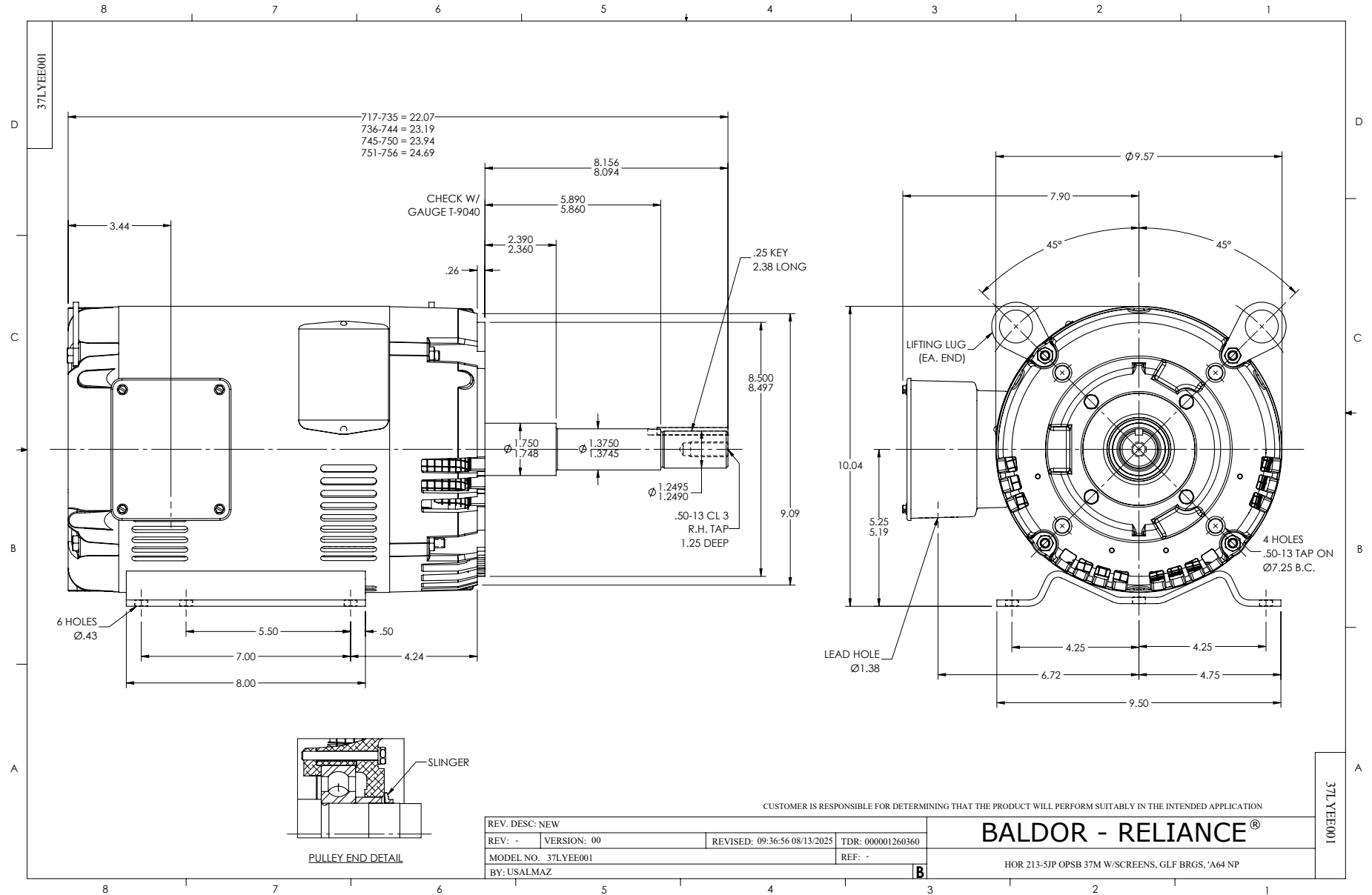
Typical performance - not guaranteed values.

10 HP 3 PH 60 HZ 3500 RPM 460 V 3736M

TORQUES (LB-FT) : PO=82 PU=28 LR=38 LRA=98



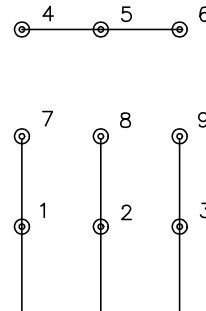
6/18/2026 ACPERF, record # 101129



CD0005

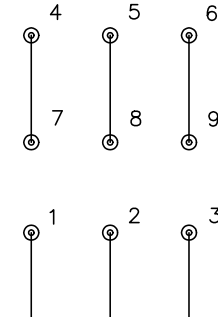


LOW VOLTAGE
(2Y)



LINE

HIGH VOLTAGE
(1Y)



LINE

NOTES:

1. INTERCHANGE ANY TWO LINE LEADS TO REVERSE ROTATION.
2. OPTIONAL THERMOSTATS ARE PROVIDED WHEN SPECIFIED.
3. ACTUAL NUMBER OF INTERNAL PARALLEL CIRCUITS MAY BE A MULTIPLE OF THOSE SHOWN ABOVE.
4. LEAD COLORS ARE OPTIONAL. LEADS MUST ALWAYS BE NUMBERED AS SHOWN.

CD0005

REV. DESC: REVISE TO SHOW OPTIONAL COLORS			
REV. LTR: E	BY: JLP	REVISED: 01/19/99 10:15	TDR: 0171435
S00000		FILE: AAA00005140	MDL: -
		MTL: -	

BALDOR ELECTRIC Co.

3PH, DV, 9 LEADS