



Customer information packet

RM3157A

2HP, 1725RPM, 3PH, 60HZ, 56H, 3524M, OPAO, F1, N

Class - None

Division - Not Applicable

Specifications

| | |
|--------------------------------|---|
| Enclosure | OPAO |
| Frame | 56H |
| Frame Material | Steel |
| Frequency | 60.00 Hz |
| Motor Letter Type | Three Phase |
| Output @ Frequency | 2.000 HP @ 60 HZ |
| Phase | 3 |
| Synchronous Speed @ Frequency | 1800 RPM @ 60 HZ |
| Voltage @ Frequency | 460.0 V @ 60 HZ 230.0 V @ 60 HZ 208.0 V @ 60 HZ |
| XP Class and Group | None |
| XP Division | Not Applicable |
| Agency Approvals | CSA UR |
| Ambient Temperature | 40 °C |
| Auxillary Box | No Auxillary Box |
| Auxillary Box Lead Termination | None |
| Base Indicator | Resilient |
| Bearing Grease Type | Polyrex EM (-20F +300F) |
| Blower | None |
| Current @ Voltage | 6.000 A @ 208.0 V 5.800 A @ 230.0 V 2.900 A @ 460.0 V |
| Design Code | B |
| Drip Cover | No Drip Cover |
| Duty Rating | CONT |
| Efficiency @ 100% Load | 81.5 % |
| Electrically Isolated Bearing | Not Electrically Isolated |
| Feedback Device | NO FEEDBACK |
| Front Face Code | Terminal Panel |
| Front Shaft Indicator | None |

Part detail

| | |
|--------------|------------|
| Revision | AD |
| Type | AC |
| Mech. spec. | 35N501 |
| Base | |
| Status | PRD/A |
| Elec. spec. | 35WGT785 |
| Layout | 35LYN501 |
| Eff. date | 10-17-2019 |
| CD Diagram | CD0007 |
| Poles | 04 |
| Leads | 12#18 |
| Proprietary | False |
| Created date | 01-01-0001 |

| | |
|-------------------------------|----------------------------|
| Heater Indicator | No Heater |
| High Voltage Full Load Amps | 2.9 a |
| Insulation Class | F |
| Inverter Code | Not Inverter |
| KVA Code | K |
| Lifting Lugs | No Lifting Lugs |
| Locked Bearing Indicator | No Locked Bearing |
| Motor Lead Exit | Terminal Panel |
| Motor Lead Quantity/Wire Size | 12 @ 18 AWG |
| Motor Lead Termination | Flying Leads |
| Motor Standards | NEMA |
| Motor Type | 3524M |
| Mounting Arrangement | F1 |
| Number of Poles | 4 |
| Overall Length | 12.42 IN |
| Power Factor | 79 |
| Product Family | General Purpose |
| Pulley End Bearing Type | Ball |
| Pulley Face Code | Resilient Mount |
| Pulley Shaft Indicator | Standard |
| Rodent Screen | None |
| Service Factor | 1.15 |
| Shaft Diameter | 0.625 IN |
| Shaft Extension Location | Pulley End |
| Shaft Ground Indicator | No Shaft Grounding |
| Shaft Rotation | Reversible |
| Shaft Slinger Indicator | No Slinger |
| Speed | 1725 rpm |
| Speed Code | Single Speed |
| Starting Method | Direct on line |
| Thermal Device - Bearing | None |
| Thermal Device - Winding | Do Not Use Eve-Not Valid |
| Vibration Sensor Indicator | No Vibration Sensor |
| Winding Thermal 1 | Automatic Thermal Overload |

Winding Thermal 1 Location

EP

Winding Thermal 2

None

Nameplate

| NP1257L | | | | | | | | | |
|---------------------|--------------|-------------|-----------|-----------------------|---|-----------|---|--|--|
| CAT.NO. | RM3157A | | | | | | | | |
| SPEC. | 35N501T785 | | | | | | | | |
| HP | 2 | | | | | | | | |
| VOLTS | 208-230/460 | | | | | | | | |
| AMP | 6-5.8/2.9 | | | | | | | | |
| RPM | 1725 | | | | | | | | |
| FRAME | 56H | | HZ | 60 | | PH | 3 | | |
| SER.F. | 1.15 | CODE | K | DES | B | CL | B | | |
| NEMA-NOM-EFF | 81.5 | PF | 79 | | | | | | |
| RATING | 40C AMB-CONT | | | | | | | | |
| CC | | | | USABLE AT 208V | 6 | | | | |
| DE | 6205 | ODE | 6203 | | | | | | |
| ENCL | OPAO | SN | | | | | | | |

AC Induction Motor Performance Data

Record # 61277

Typical performance - not guaranteed values

| Winding: 35WGT785-R004 | | Type: 3524M | | Enclosure: OPSB | |
|-------------------------------|--------------------------|--------------------|--|--------------------------|--|
| Nameplate Data | | | 460 V, 60 Hz: High Voltage Connection | | |
| Rated Output (HP) | 2 | | Full Load Torque | 6.1 LB-FT | |
| Volts | 208-230/460 | | Start Configuration | direct on line | |
| Full Load Amps | 6-5.8/2.9 | | Breakdown Torque | 22 LB-FT | |
| R.P.M. | 1725 | | Pull-up Torque | 16 LB-FT | |
| Hz | 60 Phase | 3 | Locked-rotor Torque | 19 LB-FT | |
| NEMA Design Code | B KVA Code | K | Starting Current | 21 A | |
| Service Factor (S.F.) | 1.15 | | No-load Current | 1.7 A | |
| NEMA Nom. Eff. | 81.5 Power Factor | 79 | Line-line Res. @ 25°C | 9.26 Ω | |
| Rating - Duty | 40C AMB-CONT | | Temp. Rise @ Rated Load | 62°C | |
| S.F. Amps | | | Temp. Rise @ S.F. Load | 74°C | |
| | | | Locked-rotor Power Factor | 64 | |
| | | | Rotor inertia | 0.142 LB-FT ² | |

Load Characteristics 460 V, 60 Hz, 2 HP

| % of Rated Load | 25 | 50 | 75 | 100 | 125 | 150 | S.F. |
|------------------------|-----------|-----------|-----------|------------|------------|------------|-------------|
| Power Factor | 36 | 58 | 71 | 79 | 84 | 87 | 82 |
| Efficiency | 70.8 | 80.4 | 82.4 | 82.4 | 81.2 | 79.2 | 81.7 |
| Speed | 1781 | 1765 | 1748 | 1731 | 1712 | 1688 | 1720 |
| Line amperes | 1.8 | 2 | 2.4 | 2.9 | 3.4 | 4.1 | 3.2 |

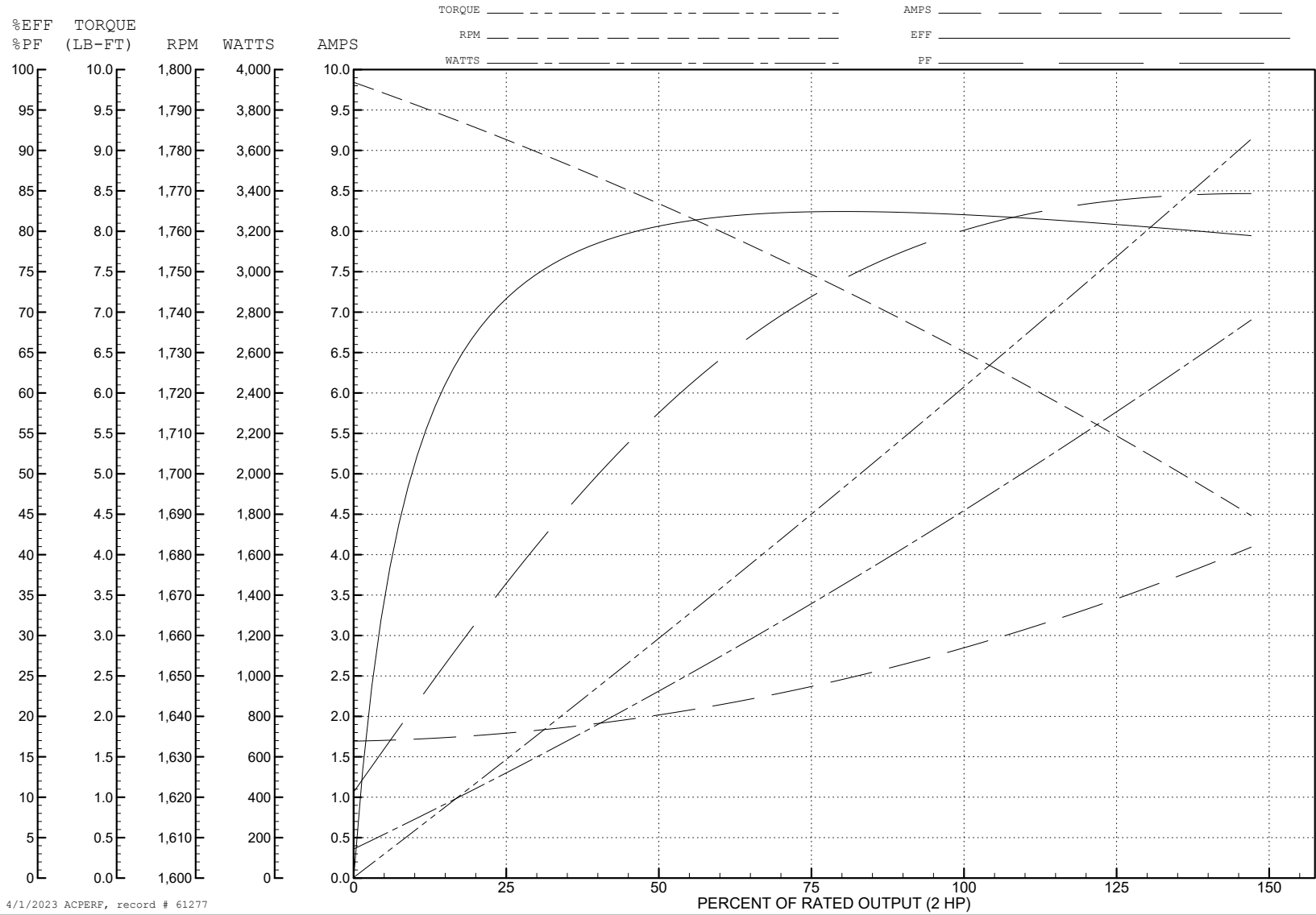
ABB Motors and Mechanical Inc.

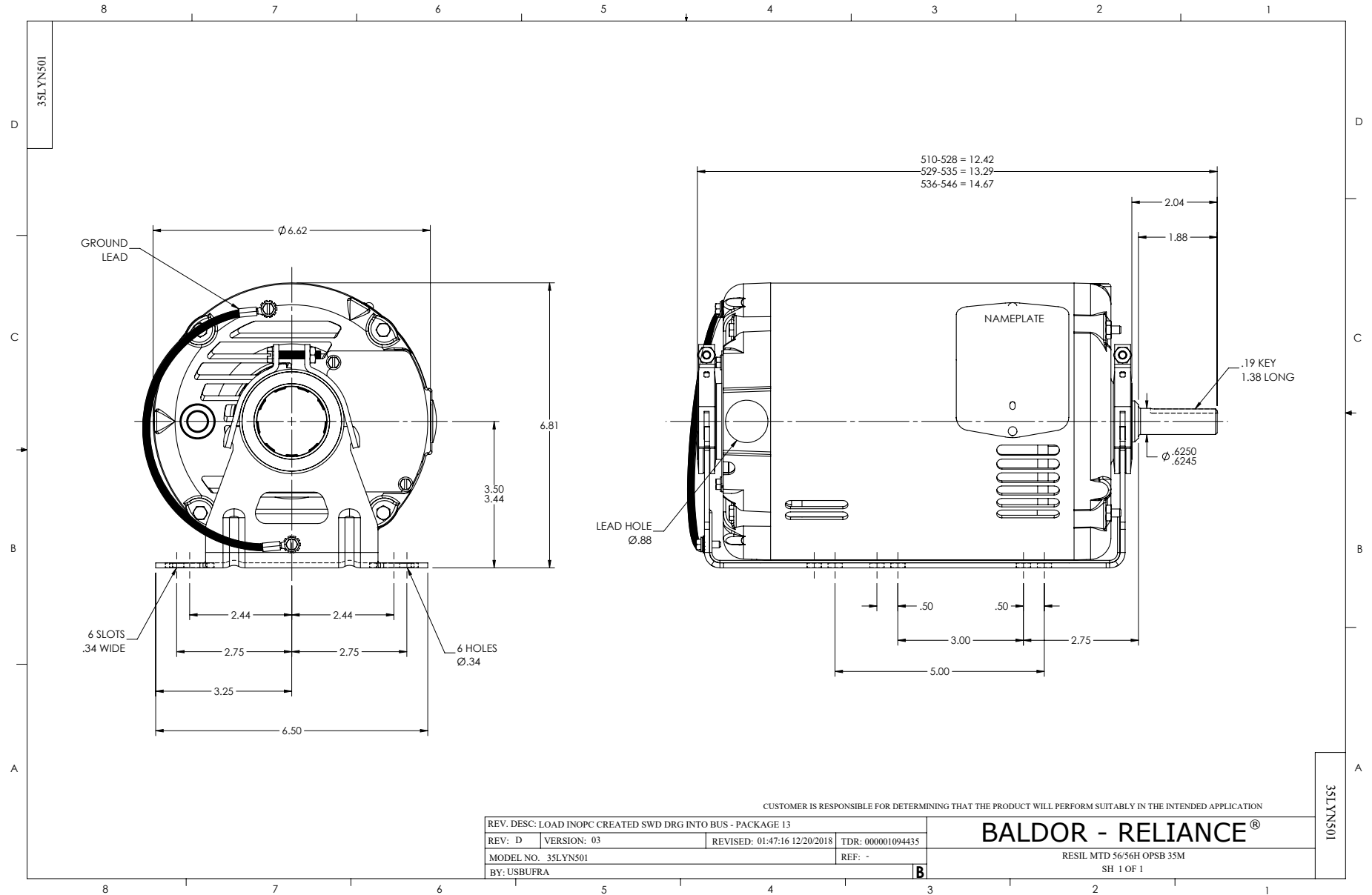
WINDING # 35WGT785

Typical performance - not guaranteed values.

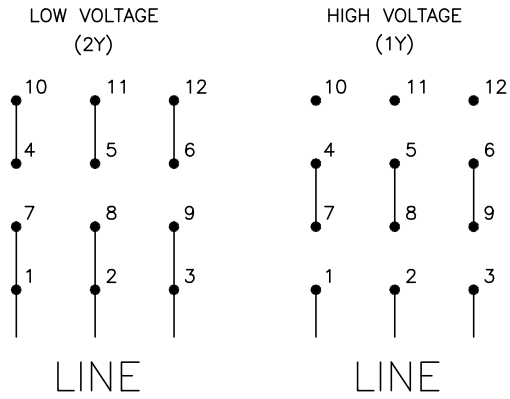
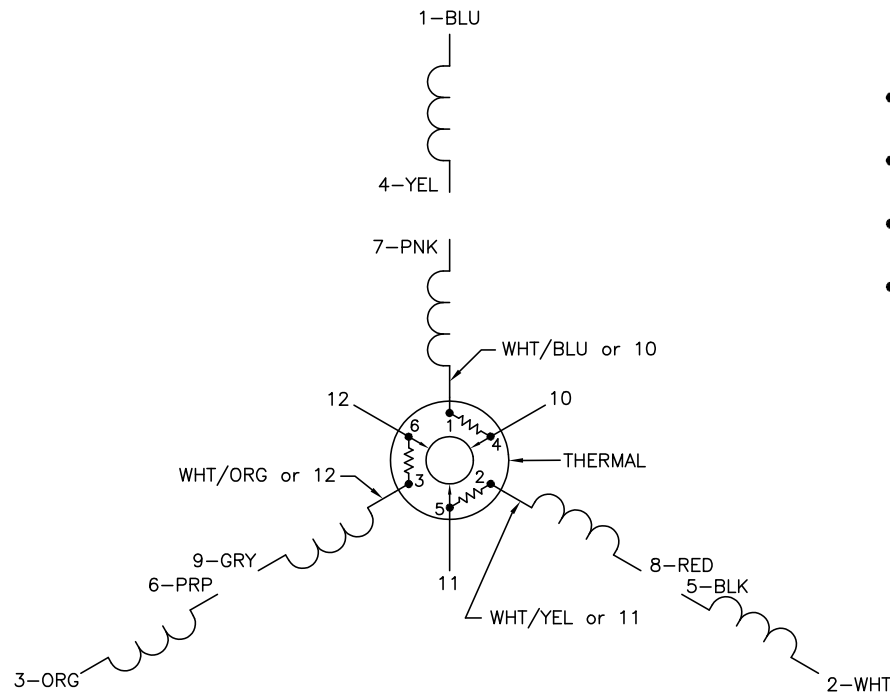
2 HP 3 PH 60 HZ 1725 RPM 460 V 3524M

TORQUES (LB-FT): PO=22 PU=16 LR=19 LRA=21





CD0007



NOTES:

1. INTERCHANGE ANY TWO LINE LEADS TO REVERSE ROTATION.
2. ACTUAL NUMBER OF INTERNAL PARALLEL CIRCUITS MAY VARY.
3. LEAD COLORS ARE OPTIONAL. LEADS MUST ALWAYS BE NUMBERED AS SHOWN.

| | | | |
|----------------------------------|---------|------------------------|--------------|
| REV. DESC: ADDED "CK" PLANT CODE | | | |
| REV. LTR: E | BY: EAH | REVISED: 05/06/99 17:1 | TDR: 0181040 |
| ∟00000 | | FILE: AAA00008370 | MDL: - |
| | | MTL: - | |

BALDOR ELECTRIC Co.

3PH, DV, THERMAL, 12 LEADS

CD0007