

**BALDOR • RELIANCE**

---

# Customer information packet

## RM3154A

1.5HP, 1725RPM, 3PH, 60HZ, 56H, 3520M, OPAO, F1

Class - None

Division - Not Applicable

## Specifications

Enclosure	OPAO
Frame	56H
Frame Material	Steel
Frequency	60.00 Hz
Haz Area Class and Group	None
Haz Area Division	Not Applicable
Motor Letter Type	Three Phase
Output @ Frequency	1.500 HP @ 60 HZ
Phase	3
Synchronous Speed @ Frequency	1800 RPM @ 60 HZ
Voltage @ Frequency	460.0 V @ 60 HZ 230.0 V @ 60 HZ 208.0 V @ 60 HZ
Agency Approvals	CSA UR
Ambient Temperature	40 °C
Auxillary Box	No Auxillary Box
Auxillary Box Lead Termination	None
Base Indicator	Resilient
Bearing Grease Type	Polyrex EM (-20F +300F)
Blower	None
Current @ Voltage	5.000 A @ 208.0 V 4.800 A @ 230.0 V 2.400 A @ 460.0 V
Design Code	B
Drip Cover	No Drip Cover
Duty Rating	CONT
Efficiency @ 100% Load	78.5 %
Electrically Isolated Bearing	Not Electrically Isolated
Feedback Device	NO FEEDBACK
Front Face Code	Terminal Panel
Front Shaft Indicator	None

## Part detail

Revision	H
Type	AC
Mech. spec.	35N501
Base	
Status	PRD/A
Elec. spec.	35WGL469
Layout	35LYN501
Eff. date	05-14-2024
CD Diagram	CD0007
Poles	04
Leads	12#18
Proprietary	False
Created date	12-22-2015

Heater Indicator	No Heater
High Voltage Full Load Amps	2.4 a
Insulation Class	F
Inverter Code	Not Inverter
KVA Code	K
Lifting Lugs	No Lifting Lugs
Locked Bearing Indicator	No Locked Bearing
Motor Lead Exit	Terminal Panel
Motor Lead Quantity/Wire Size	12 @ 18 AWG
Motor Lead Termination	Flying Leads
Motor Standards	NEMA
Motor Type	3520M
Mounting Arrangement	F1
Number of Poles	4
Overall Length	12.42 IN
Power Factor	72
Product Family	General Purpose
Pulley End Bearing Type	Ball
Pulley Face Code	Resilient Mount
Pulley Shaft Indicator	Standard
Rodent Screen	None
RoHS Status	ROHS COMPLIANT
Service Factor	1.15
Shaft Diameter	0.625 IN
Shaft Extension Location	Pulley End
Shaft Ground Indicator	No Shaft Grounding
Shaft Rotation	Reversible
Shaft Slinger Indicator	No Slinger
Speed	1725 rpm
Speed Code	Single Speed
Starting Method	Direct on line
Thermal Device - Bearing	None
Thermal Device - Winding	Do Not Use Eve-Not Valid
Vibration Sensor Indicator	No Vibration Sensor

<b>Winding Thermal 1</b>	<b>Automatic Thermal Overload</b>
<b>Winding Thermal 1 Location</b>	<b>ES</b>
<b>Winding Thermal 2</b>	<b>None</b>

---

**Nameplate**

<b>NP1257L</b>									
<b>CAT.NO.</b>	RM3154A								
<b>SPEC.</b>	35N501L469G1								
<b>HP</b>	1.5								
<b>VOLTS</b>	208-230/460								
<b>AMP</b>	5-4.8/2.4								
<b>RPM</b>	1725								
<b>FRAME</b>	56H		<b>HZ</b>	60		<b>PH</b>	3		
<b>SER.F.</b>	1.15	<b>CODE</b>	K	<b>DES</b>	B	<b>CL</b>	F		
<b>NEMA-NOM-EFF</b>	78.5	<b>PF</b>	72						
<b>RATING</b>	40C AMB-CONT								
<b>CC</b>									
<b>DE</b>	6205	<b>ODE</b>	6203						
<b>ENCL</b>	OPAO	<b>SN</b>							

**AC Induction Motor Performance Data**

Record # 61276

Typical performance - not guaranteed values

Winding: 35WGL469-R002		Type: 3520M		Enclosure: OPSB	
<b>Nameplate Data</b>			<b>460 V, 60 Hz: High Voltage Connection</b>		
Rated Output (HP)	1.5	Full Load Torque	4.7 LB-FT		
Volts	208-230/460	Start Configuration	direct on line		
Full Load Amps	5-4.8/2.4	Breakdown Torque	19.1 LB-FT		
R.P.M.	1725	Pull-up Torque	11.5 LB-FT		
Hz	60 Phase	3	Locked-rotor Torque	15.2 LB-FT	
NEMA Design Code	B	KVA Code	K	Starting Current	18.4 A
Service Factor (S.F.)	1.15	No-load Current	1.84 A		
NEMA Nom. Eff.	78.5	Power Factor	72	Line-line Res. @ 25°C	12.3 Ω
Rating - Duty	40C AMB-CONT		Temp. Rise @ Rated Load	54°C	
S.F. Amps			Temp. Rise @ S.F. Load	61°C	
			Locked-rotor Power Factor	73.1	
			Rotor inertia	0.119 LB-FT <sup>2</sup>	

**Load Characteristics 460 V, 60 Hz, 1.5 HP**

% of Rated Load	25	50	75	100	125	150	S.F.
Power Factor	32	50	64	74	81	86	78
Efficiency	62.4	74.4	77.9	79.5	78.2	78.2	78.7
Speed	1786	1774	1759	1744	1726	1713	1733
Line amperes	1.87	1.99	2.21	2.5	2.87	3.2	2.72

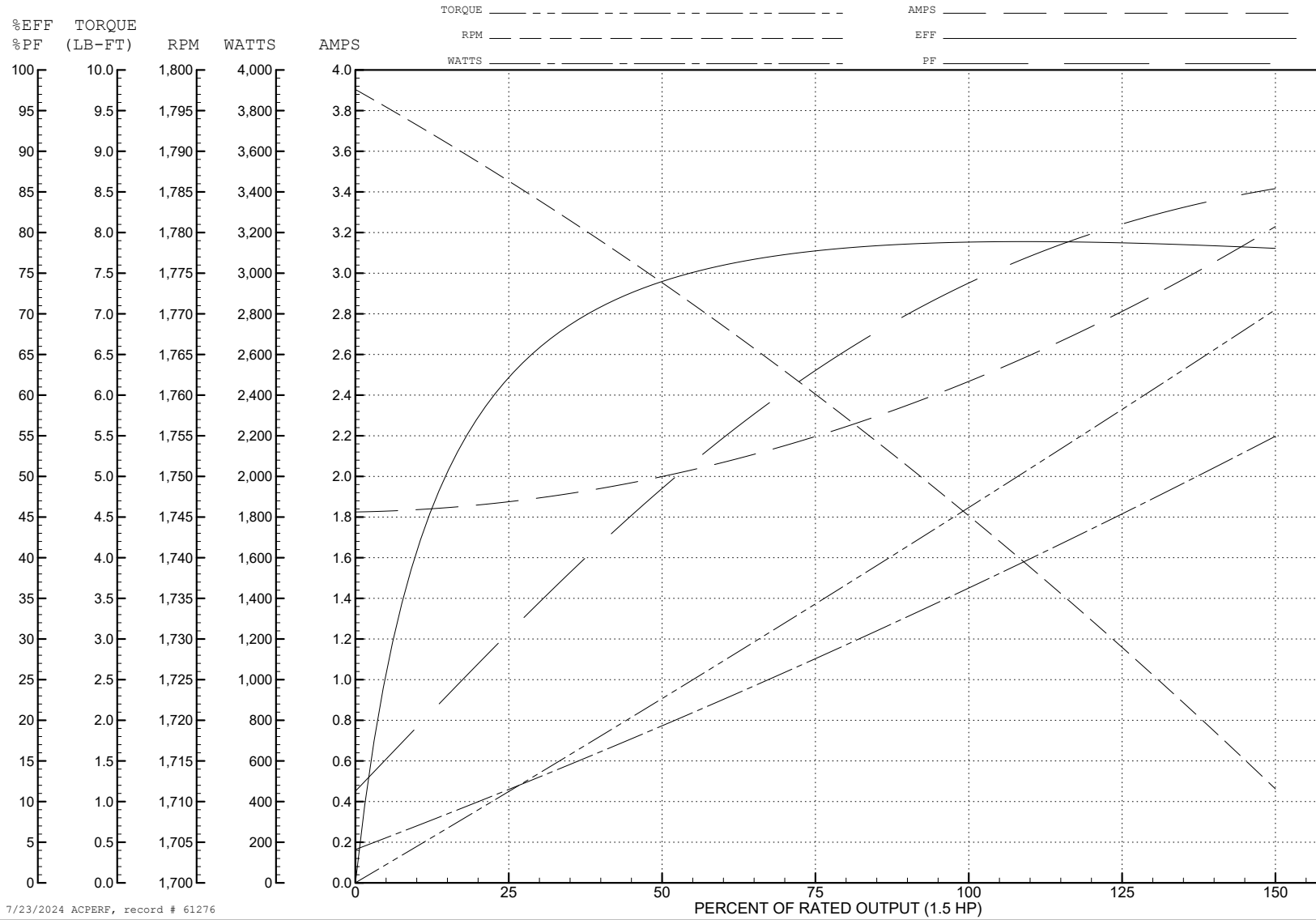
ABB Motors and Mechanical Inc.

WINDING # 35WGL469

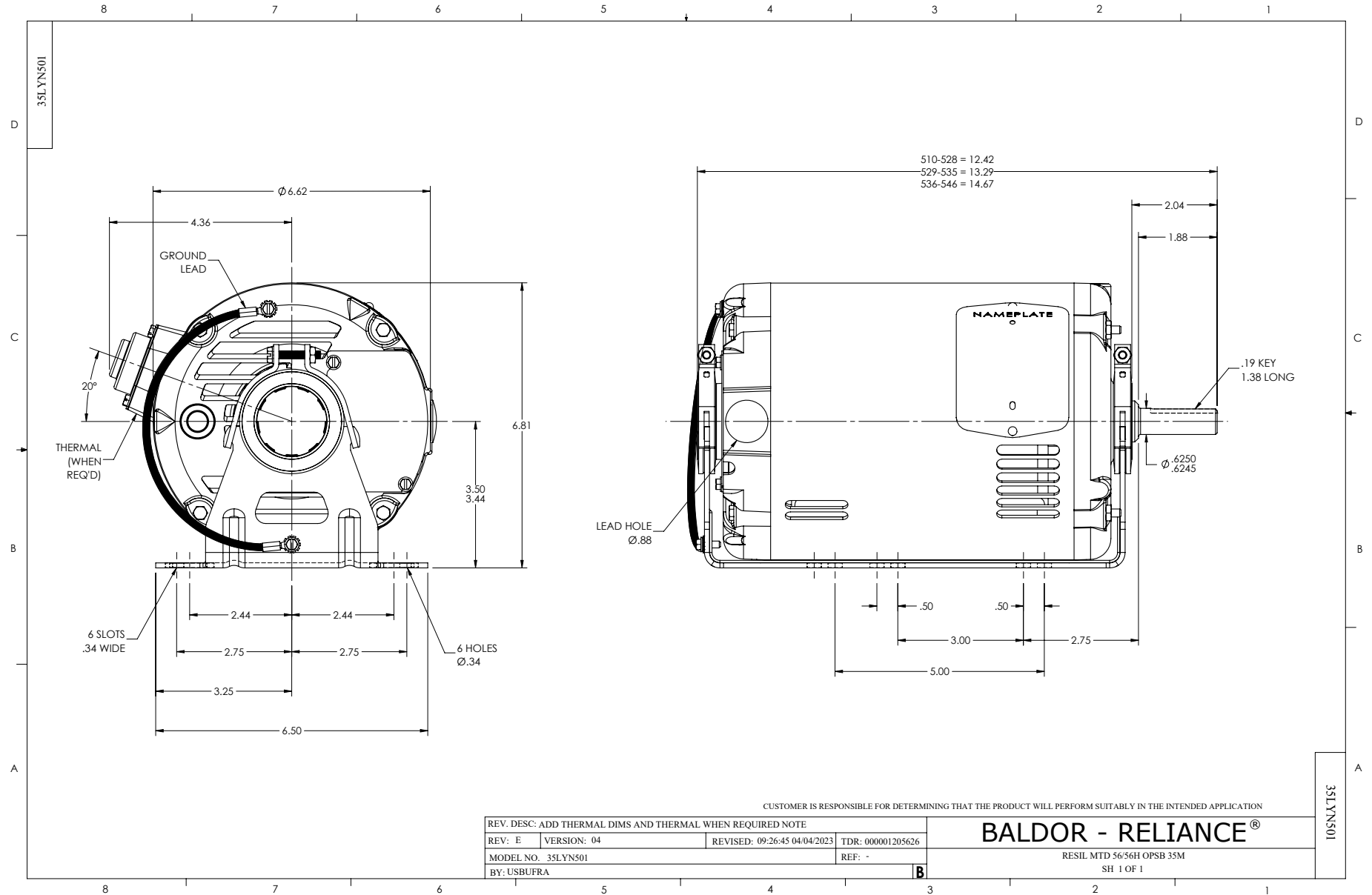
1.5 HP 3 PH 60 HZ 1725 RPM 460 V 3520M

Typical performance - not guaranteed values.

TORQUES (LB-FT): PO=19.1 PU=11.5 LR=15.2 LRA=18.4

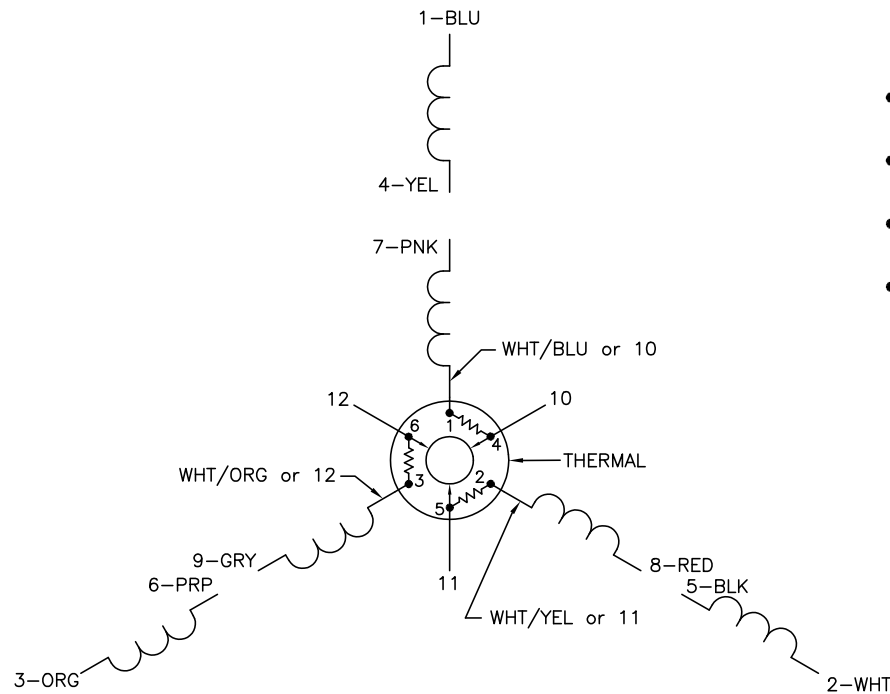


7/23/2024 ACPERF, record # 61276

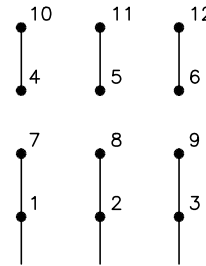




CD0007

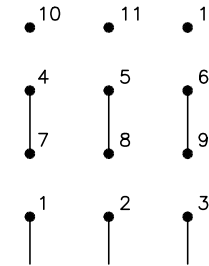


LOW VOLTAGE  
(2Y)



LINE

HIGH VOLTAGE  
(1Y)



LINE

NOTES:

1. INTERCHANGE ANY TWO LINE LEADS TO REVERSE ROTATION.
2. ACTUAL NUMBER OF INTERNAL PARALLEL CIRCUITS MAY VARY.
3. LEAD COLORS ARE OPTIONAL. LEADS MUST ALWAYS BE NUMBERED AS SHOWN.

CD0007

REV. DESC: ADDED "CK" PLANT CODE			
REV. LTR: E	BY: EAH	REVISED: 05/06/99 17:1	TDR: 0181040
L00000		FILE: AAA00008370	MDL: -
		MTL: -	

BALDOR ELECTRIC Co.

3PH, DV, THERMAL, 12 LEADS