



Customer information packet

RM3116A

1 AIR OVERHP, 1725RPM, 3PH, 60HZ, 56, 3424M

Class - None

Division - Not Applicable

Specifications

Enclosure	OPEN
Frame	56
Frame Material	Steel
Frequency	60.00 Hz
Haz Area Class and Group	None
Haz Area Division	Not Applicable
Motor Letter Type	Three Phase
Output @ Frequency	1.000 HP @ 60 HZ
Phase	3
Synchronous Speed @ Frequency	1800 RPM @ 60 HZ
Voltage @ Frequency	230.0 V @ 60 HZ 460.0 V @ 60 HZ
Agency Approvals	UR CSA
Ambient Temperature	40 °C
Auxillary Box	No Auxillary Box
Auxillary Box Lead Termination	None
Base Indicator	Resilient
Bearing Grease Type	Polyrex EM (-20F +300F)
Blower	None
Current @ Voltage	2.000 A @ 460.0 V 3.900 A @ 208.0 V 4.000 A @ 230.0 V
Design Code	B
Drip Cover	No Drip Cover
Duty Rating	CONT
Efficiency @ 100% Load	78.5 %
Electrically Isolated Bearing	Not Electrically Isolated
Feedback Device	NO FEEDBACK
Front Face Code	Resilient Mount
Front Shaft Indicator	None
Heater Indicator	No Heater

Part detail

Revision	J
Type	AC
Mech. spec.	34K019
Base	
Status	PRD/A
Elec. spec.	34WGX730
Layout	34LYK019
Eff. date	07-08-2024
CD Diagram	CD0007
Poles	04
Leads	12#18
Proprietary	False
Created date	04-05-2013

High Voltage Full Load Amps	2.0 a
Insulation Class	B
Inverter Code	Not Inverter
KVA Code	L
Lifting Lugs	No Lifting Lugs
Locked Bearing Indicator	No Locked Bearing
Motor Lead Exit	Terminal Panel
Motor Lead Quantity/Wire Size	12 @ 18 AWG
Motor Lead Termination	Flying Leads
Motor Standards	NEMA
Motor Type	3424M
Mounting Arrangement	F1
Number of Poles	4
Overall Length	12.47 IN
Power Factor	70
Product Family	General Purpose
Pulley End Bearing Type	Ball
Pulley Face Code	Resilient Mount
Pulley Shaft Indicator	Standard
Rodent Screen	None
RoHS Status	ROHS COMPLIANT
Service Factor	1.15
Shaft Diameter	0.625 IN
Shaft Extension Location	Pulley End
Shaft Ground Indicator	No Shaft Grounding
Shaft Rotation	Reversible
Shaft Slinger Indicator	No Slinger
Speed	1725 rpm
Speed Code	Single Speed
Starting Method	Direct on line
Thermal Device - Bearing	None
Thermal Device - Winding	None
Vibration Sensor Indicator	No Vibration Sensor
Winding Thermal 1	Automatic Thermal Overload

Winding Thermal 1 Location

SB

Winding Thermal 2

None

Nameplate

NP1257L									
CAT.NO.	RM3116A								
SPEC.	34K019X730G1								
HP	1 AIR OVER								
VOLTS	230/460								
AMP	4/2								
RPM	1725								
FRAME	56			HZ	60		PH	3	
SER.F.	1.15	CODE	L	DES	B	CL	B		
NEMA-NOM-EFF	78.5	PF	70						
RATING	40C AMB-CONT								
CC									
DE	6203	ODE	6203						
ENCL	OPEN	SN							

AC Induction Motor Performance Data

Record # 41858

Typical performance - not guaranteed values

Winding: 34WGX730-R003		Type: 3424M		Enclosure: OPAO	
Nameplate Data			460 V, 60 Hz: High Voltage Connection		
Rated Output (HP)	1	Full Load Torque	3 LB-FT		
Volts	230/460	Start Configuration	direct on line		
Full Load Amps	4/2	Breakdown Torque	11 LB-FT		
R.P.M.	1725	Pull-up Torque	9.5 LB-FT		
Hz	60 Phase	3	Locked-rotor Torque	10.5 LB-FT	
NEMA Design Code	B KVA Code	L	Starting Current	11.6 A	
Service Factor (S.F.)		1.15	No-load Current	1.3 A	
NEMA Nom. Eff.	78.5 Power Factor	70	Line-line Res. @ 25°C	17.3 Ω	
Rating - Duty	40C AMB-CONT		Temp. Rise @ Rated Load		
			Locked-rotor Power Factor	58	
			Rotor inertia	0.0572 LB-FT ²	

Load Characteristics 460 V, 60 Hz, 1 HP

% of Rated Load	25	50	75	100	125	150	S.F.
Power Factor	31	69	74	75	75	73	75
Efficiency	55.7	68.7	73.5	74.9	74.6	73.2	74.7
Speed	1777	1759	1738	1715	1689	1660	1699
Line amperes	1.4	1.5	1.7	1.9	2.1	2.5	2.02

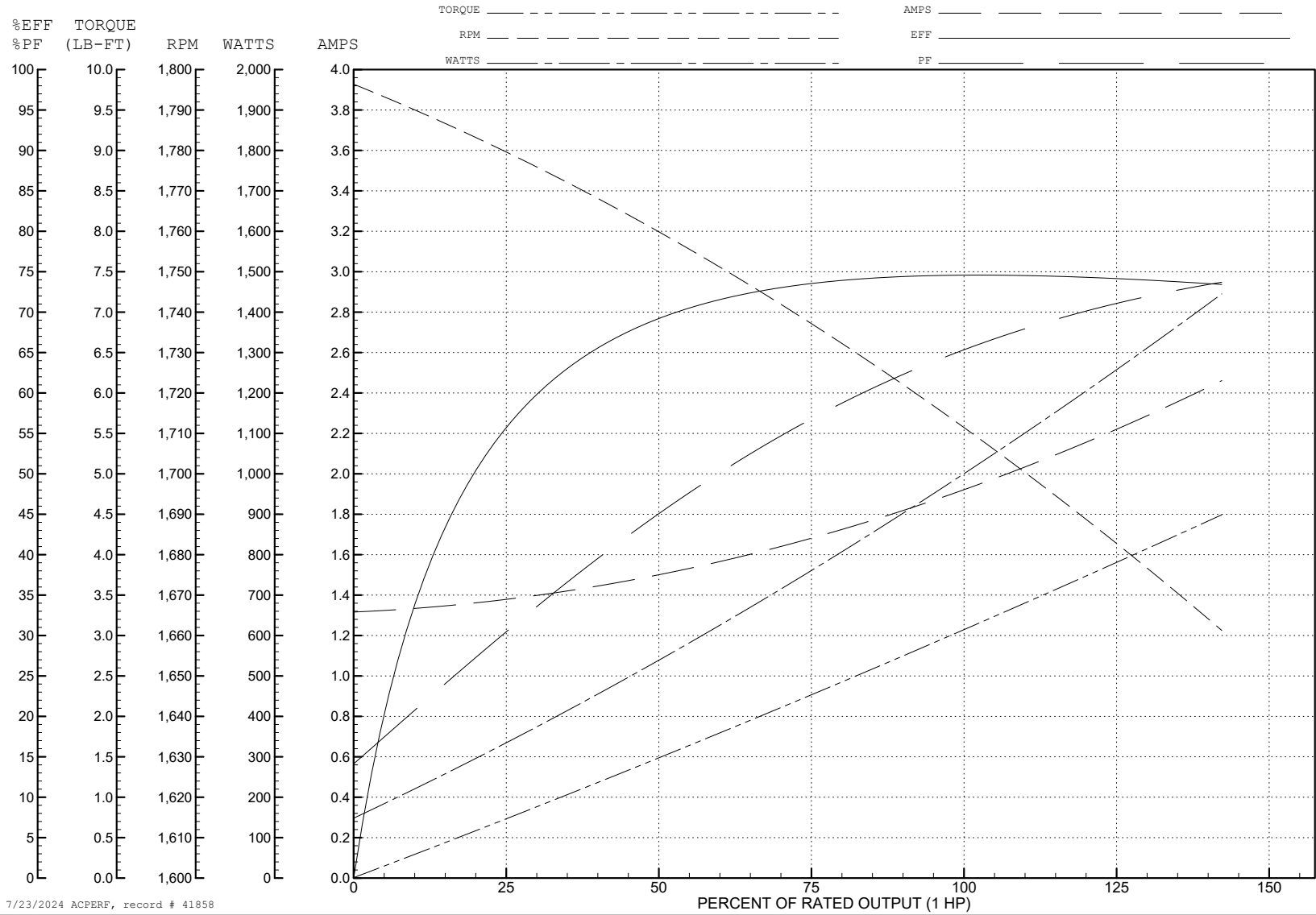
ABB Motors and Mechanical Inc.

WINDING # 34WGx730

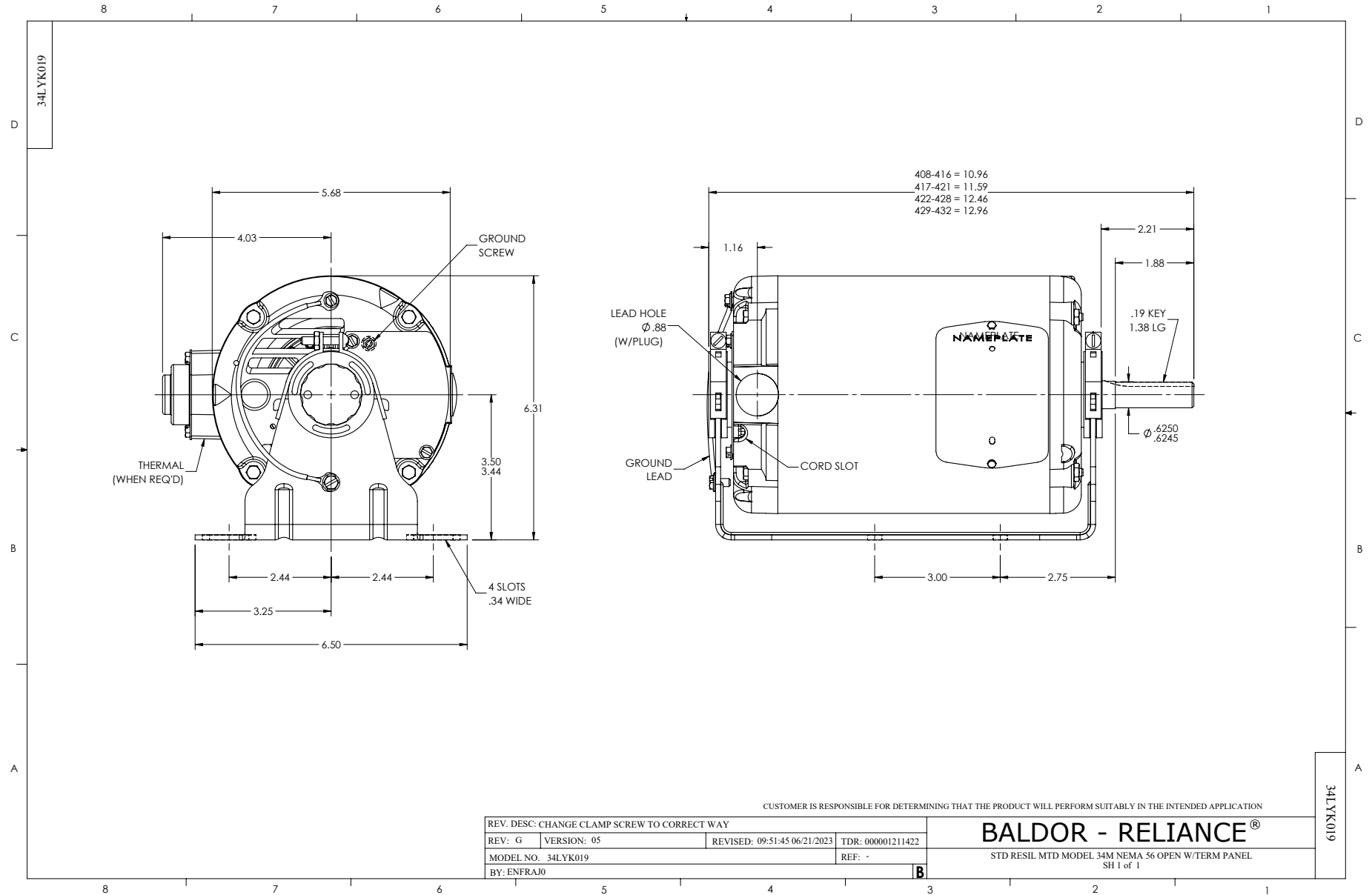
Typical performance - not guaranteed values.

1 HP 3 PH 60 HZ 1725 RPM 460 V 3424M

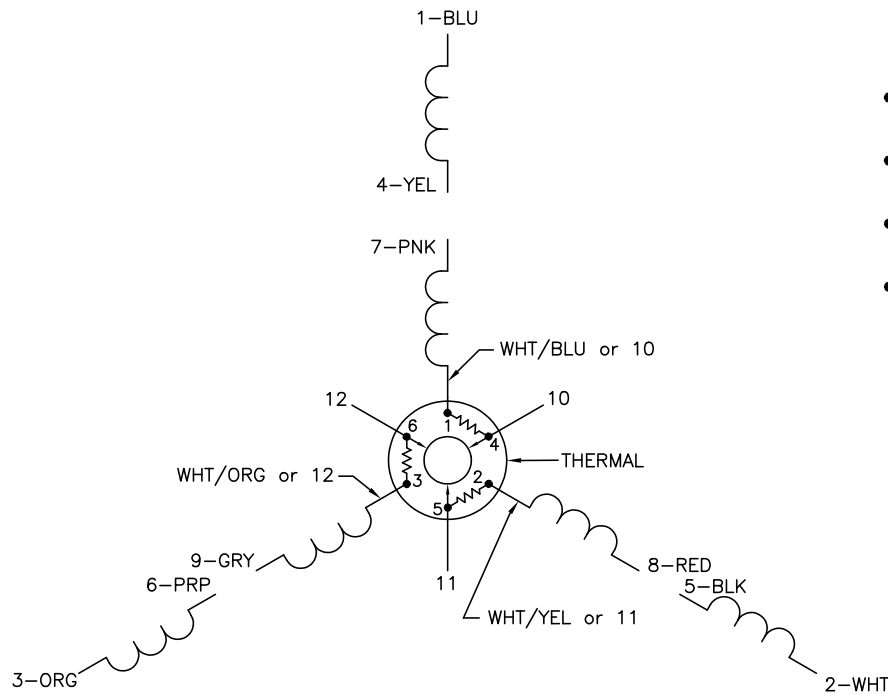
TORQUES (LB-FT): PO=11 PU=9.5 LR=10.5 LRA=11.6



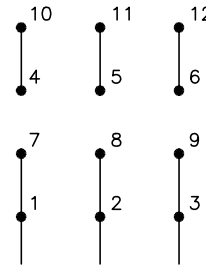
7/23/2024 ACPERF, record # 41858



CD0007

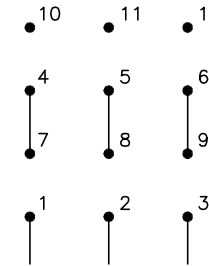


LOW VOLTAGE
(2Y)



LINE

HIGH VOLTAGE
(1Y)



LINE

NOTES:

1. INTERCHANGE ANY TWO LINE LEADS TO REVERSE ROTATION.
2. ACTUAL NUMBER OF INTERNAL PARALLEL CIRCUITS MAY VARY.
3. LEAD COLORS ARE OPTIONAL. LEADS MUST ALWAYS BE NUMBERED AS SHOWN.

CD0007

REV. DESC: ADDED "CK" PLANT CODE			
REV. LTR: E	BY: EAH	REVISED: 05/06/99 17:1	TDR: 0181040
L00000		FILE: AAA00008370	MDL: -
		MTL: -	

BALDOR ELECTRIC Co.

3PH, DV, THERMAL, 12 LEADS