

ABB BALDOR RELIANCE III

Customer information packet

RL1324A

.75HP, 1725RPM, 1PH, 60HZ, 56, 3424L, OPEN, F1

Class - None

Division - Not Applicable

Specifications

Enclosure	OPEN
Frame	56
Frame Material	Steel
Frequency	60.00 Hz
Haz Area Class and Group	None
Haz Area Division	Not Applicable
Motor Letter Type	Cap Start, Induction Run
Output @ Frequency	.750 HP @ 60 HZ
Phase	1
Synchronous Speed @ Frequency	1800 RPM @ 60 HZ
Voltage @ Frequency	115.0 V @ 60 HZ 230.0 V @ 60 HZ
Agency Approvals	UR CSA
Ambient Temperature	40 °C
Auxiliary Box	NO AUXILLARY BOX
Auxiliary Box Lead Termination	None
Base Indicator	Resilient
Bearing Grease Type	Polyrex EM (-20F +300F)
Blower	None
Current @ Voltage	10.800 A @ 115.0 V 5.400 A @ 230.0 V
Design Code	N
Drip Cover	No Drip Cover
Duty Rating	CONT
Efficiency @ 100% Load	71.0 %
Electrically Isolated Bearing	Not Electrically Isolated
Feedback Device	NO FEEDBACK
Front Face Code	Resilient Mount
Front Shaft Indicator	None
Heater Indicator	No Heater
High Voltage Full Load Amps	5.4 a

Part Detail

Revision	AT
Type	AC
Mech. spec.	34K018
Base	
Status	PRD/A
Elec. spec.	34WGW168
Layout	34LYK018
Eff. date	10-28-2024
CD Diagram	CD0052
Poles	04
Leads	6#18,1#14 #1TH
Proprietary	False
Created date	01-01-0001

Insulation Class	B
Inverter Code	Not Inverter
KVA Code	G
Lifting Lugs	No Lifting Lugs
Locked Bearing Indicator	No Locked Bearing
Motor Lead Exit	Terminal Panel
Motor Lead Quantity/Wire Size	6 @ 18 AWG
Motor Lead Termination	Flying Leads
Motor Standards	NEMA
Motor Type	3424L
Mounting Arrangement	F1
Number of Poles	4
Overall Length	12.47 IN
Power Factor	71
Product Family	General Purpose
Pulley End Bearing Type	Ball
Pulley Face Code	Resilient Mount
Pulley Shaft Indicator	Standard
Rodent Screen	None
Service Factor	1.00
Shaft Diameter	0.625 IN
Shaft Extension Location	Pulley End
Shaft Ground Indicator	No Shaft Grounding
Shaft Rotation	Reversible: Connected Standard
Shaft Slinger Indicator	No Slinger
Speed	1725 rpm
Speed Code	Single Speed
Starting Method	Direct on line
Thermal Device - Bearing	None
Thermal Device - Winding	None
Vibration Sensor Indicator	No Vibration Sensor
Winding Thermal 1	Automatic Thermal Overload
Winding Thermal 1 Location	SB
Winding Thermal 2	None

Nameplate

NP1257L									
CAT.NO.	RL1324A								
SPEC.	34K18W168								
HP	.75								
VOLTS	115/230								
AMP	10.8/5.4								
RPM	1725								
FRAME	56		HZ	60		PH	1		
SER.F.	1.00	CODE	G	DES	N	CL	B		
NEMA-NOM-EFF	71	PF	71						
RATING	40C AMB-CONT								
CC									
DE	6203	ODE	6203						
ENCL	OPEN	SN							

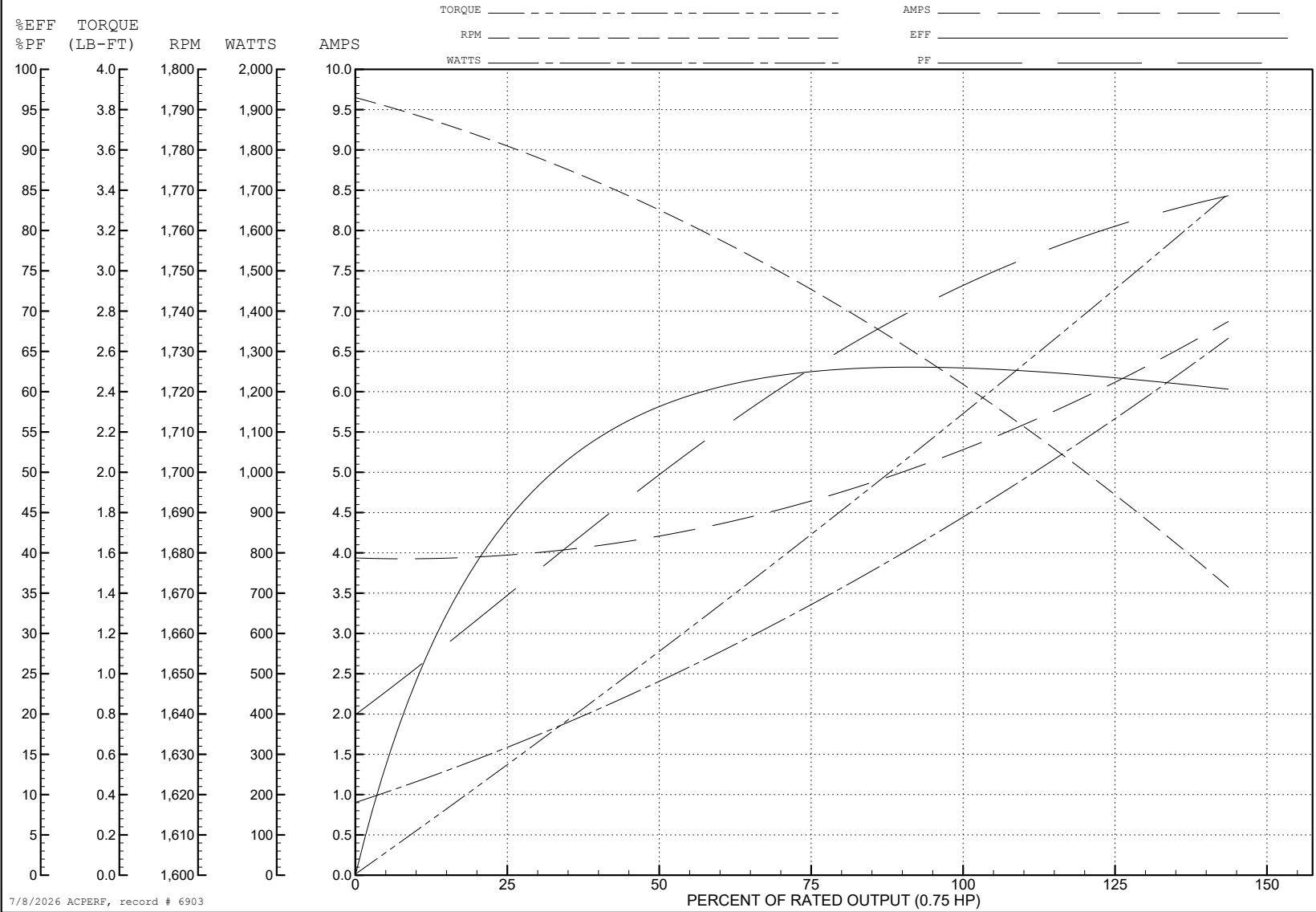
ABB Motors and Mechanical Inc.

WINDING # 34WGW168

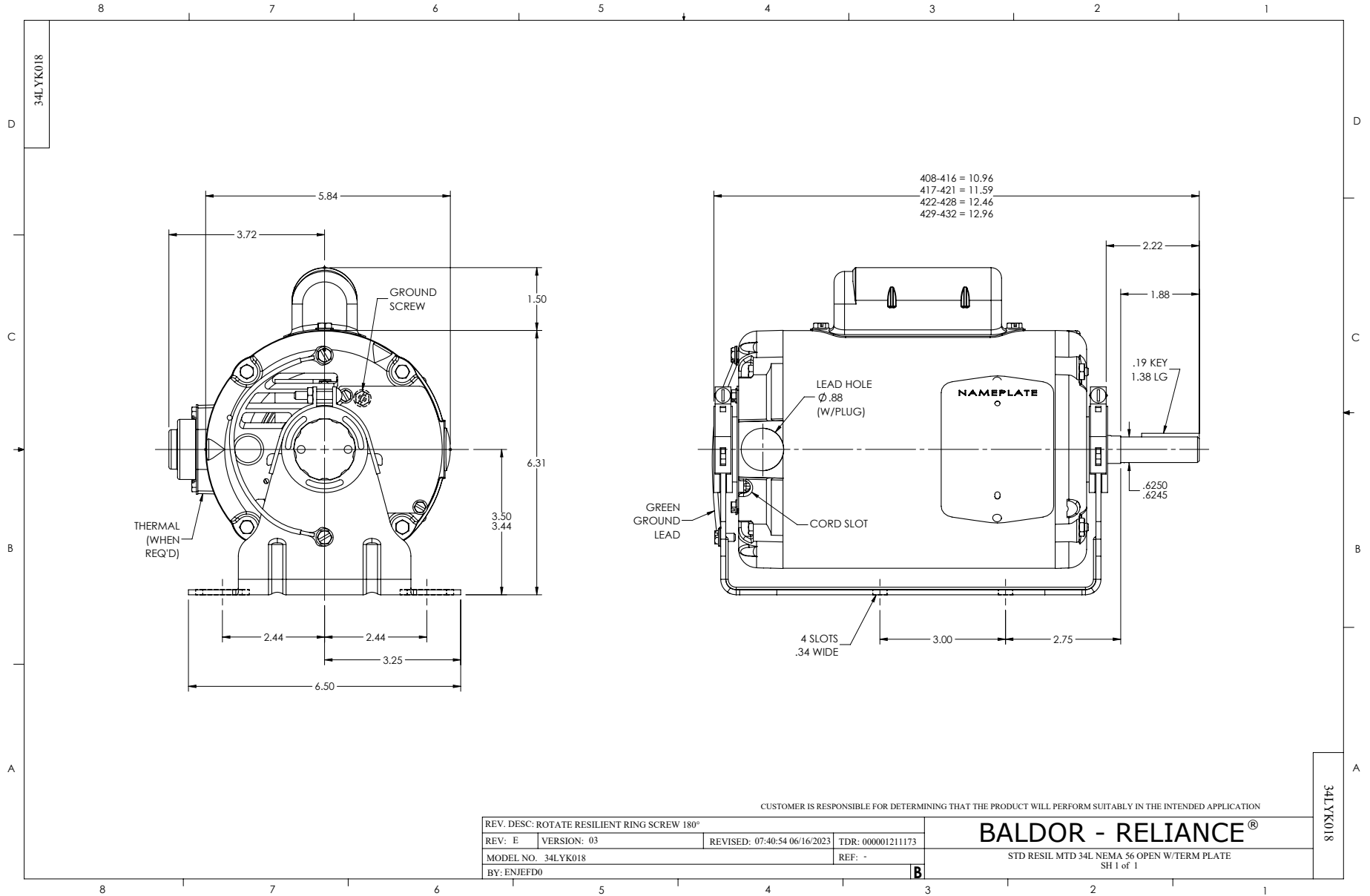
0.75 HP 1 PH 60 HZ 1725 RPM 230 V 3424L

Typical performance - not guaranteed values.

TORQUES (LB-FT): PO=4.7 PU=3 LR=3.8 LRA=19.5



7/8/2026 ACPERF, record # 6903



CUSTOMER IS RESPONSIBLE FOR DETERMINING THAT THE PRODUCT WILL PERFORM SUITABLY IN THE INTENDED APPLICATION

REV. DESC: ROTATE RESILIENT RING SCREW 180°			
REV: E	VERSION: 03	REVISED: 07:40:54 06/16/2023	TDR: 000001211173
MODEL NO. 34LYK018		REF: -	
BY: ENJFDO		B	

BALDOR - RELIANCE®

STD RESIL MTD 34L NEMA 56 OPEN W/TERM PLATE
SH 1 of 1

34LYK018

CD0052

