

ABB BALDOR RELIANCE III

Customer information packet

RL1310A277

1HP, 1725RPM, 1PH, 60HZ, 56H, 3526L, OPEN, F1, N

Class - None

Division - Not Applicable

Specifications

Enclosure	OPEN
Frame	56H
Frame Material	Steel
Frequency	60.00 Hz
Haz Area Class and Group	None
Haz Area Division	Not Applicable
Motor Letter Type	Cap Start, Induction Run
Output @ Frequency	1.000 HP @ 60 HZ
Phase	1
Synchronous Speed @ Frequency	1800 RPM @ 60 HZ
Voltage @ Frequency	277.0 V @ 60 HZ
Agency Approvals	C UR US
Ambient Temperature	40 °C
Auxiliary Box	NO AUXILLARY BOX
Auxiliary Box Lead Termination	None
Base Indicator	Resilient
Bearing Grease Type	Polyrex EM (-20F +300F)
Blower	None
Current @ Voltage	5.600 A @ 277.0 V
Design Code	L
Drip Cover	No Drip Cover
Duty Rating	CONT
Efficiency @ 100% Load	68.0 %
Electrically Isolated Bearing	Not Electrically Isolated
Feedback Device	NO FEEDBACK
Front Shaft Indicator	None
Heater Indicator	No Heater
High Voltage Full Load Amps	5.6 a
Insulation Class	F
Inverter Code	Not Inverter
KVA Code	M
Lifting Lugs	No Lifting Lugs

Part Detail

Revision	H
Type	AC
Mech. spec.	35E410
Base	
Status	PRD/A
Elec. spec.	35WGG404
Layout	35LYE410
Eff. date	02-21-2025
CD Diagram	CD0085
Poles	04
Leads	5#18
Proprietary	False
Created date	02-23-2023

Locked Bearing Indicator	No Locked Bearing
Motor Lead Quantity/Wire Size	5 @ 18 AWG
Motor Lead Termination	Flying Leads
Motor Standards	NEMA
Motor Type	3526L
Mounting Arrangement	F1
Number of Poles	4
Overall Length	12.42 IN
Power Factor	71
Product Family	General Purpose
Pulley End Bearing Type	Ball
Pulley Face Code	Resilient Mount
Pulley Shaft Indicator	Standard
Rodent Screen	None
RoHS Status	ROHS COMPLIANT
Service Factor	1.15
Shaft Diameter	0.625 IN
Shaft Ground Indicator	No Shaft Grounding
Shaft Rotation	Reversible: Connected Standard
Shaft Slinger Indicator	No Slinger
Speed	1725 rpm
Speed Code	Single Speed
Starting Method	Direct on line
Thermal Device - Bearing	None
Thermal Device - Winding	Do Not Use Eve-Not Valid
Vibration Sensor Indicator	No Vibration Sensor
Winding Thermal 1	Automatic Thermal Overload
Winding Thermal 1 Location	SB
Winding Thermal 2	None

Nameplate

NP1257L									
CAT.NO.	RL1310A277								
SPEC.	35E410G404								
HP	1								
VOLTS	277								
AMP	5.6								
RPM	1725								
FRAME	56H		HZ	60		PH	1		
SER.F.	1.15	CODE	M	DES	L	CL	F		
NEMA-NOM-EFF	68	PF	71						
RATING	40C AMB-CONT								
CC									
DE	6203	ODE	6203						
ENCL	OPEN	SN							

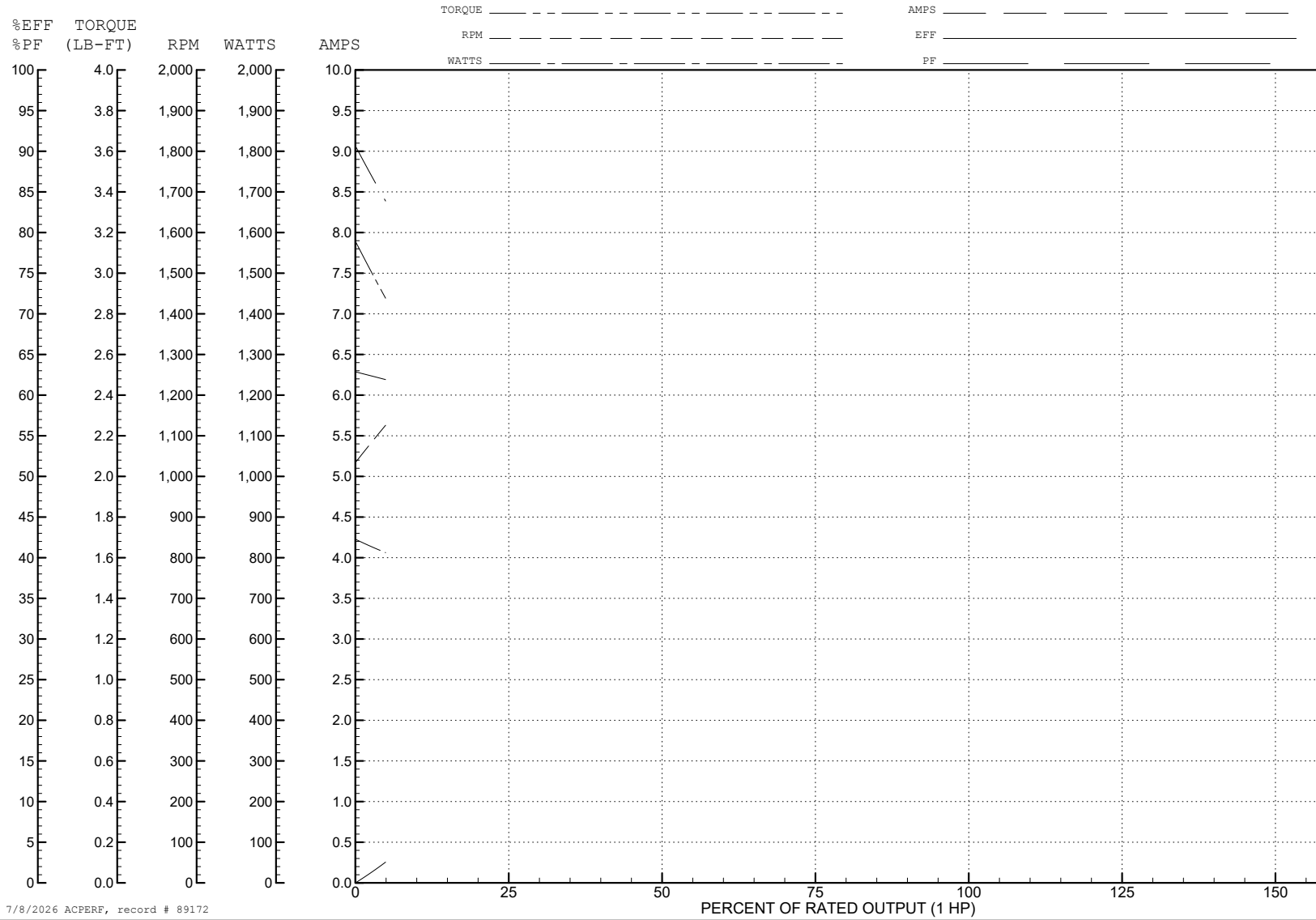
ABB Motors and Mechanical Inc.

WINDING # 35WGG404

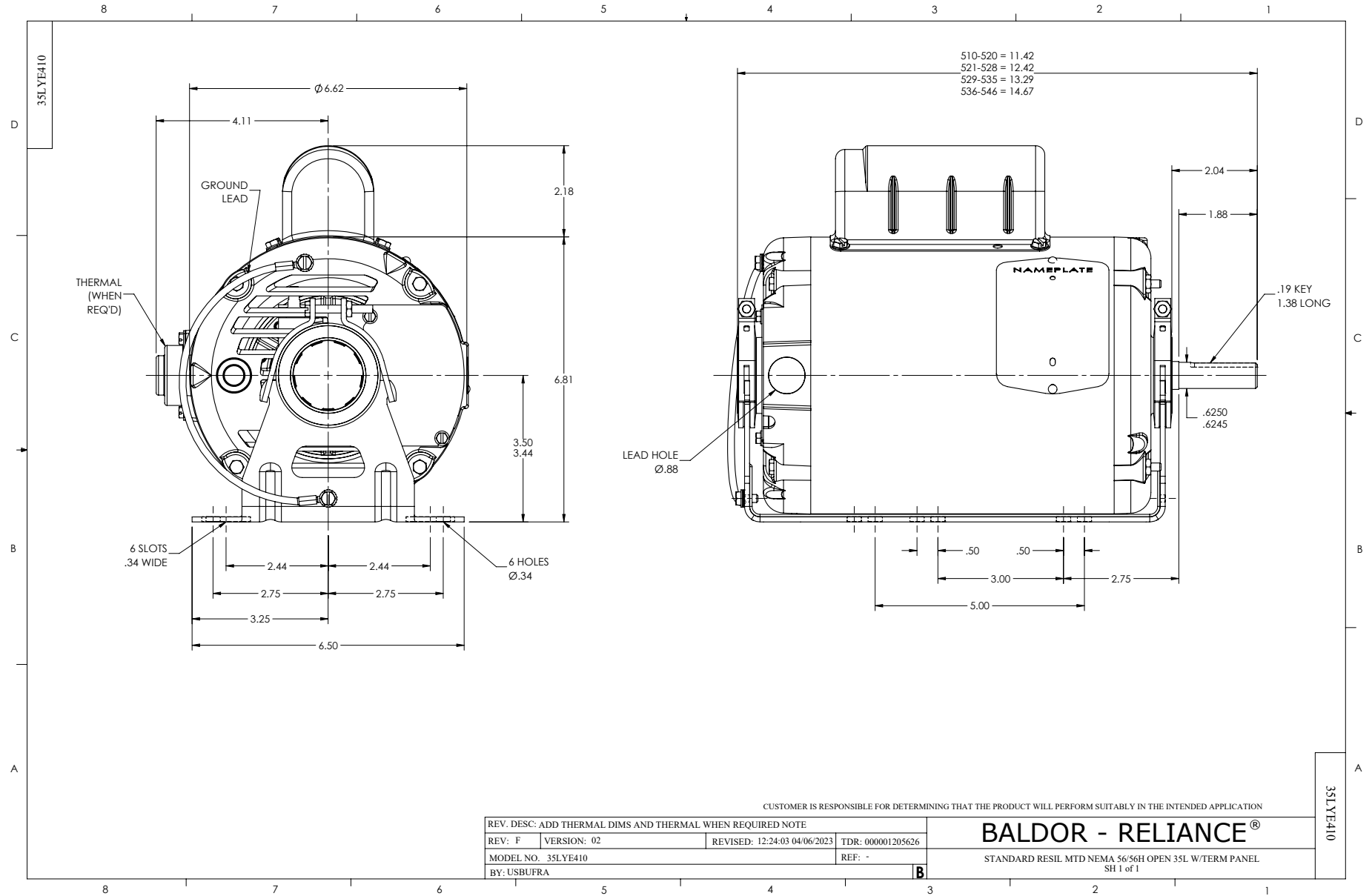
1 HP 1 PH 60 HZ 1725 RPM 277 V 3526L

Typical performance - not guaranteed values.

TORQUES (LB-FT): PO=9.38 PU=8.35 LR=12.9 LRA=40.02



7/8/2026 ACPERF, record # 89172



CD0085

