



---

# Customer information packet

## RL1209A

.5HP, 2850//3450RPM, 1PH, 50//60HZ, 48, 3420L

Class - None

Division - Not Applicable

## Specifications

Enclosure	OPEN
Frame	48
Frame Material	Steel
Frequency	50.00 Hz 60.00 Hz
Haz Area Class and Group	None
Haz Area Division	Not Applicable
Motor Letter Type	Cap Start, Induction Run
Output @ Frequency	.500 HP @ 60 HZ .500 HP @ 50 HZ
Phase	1
Synchronous Speed @ Frequency	3000 RPM @ 50 HZ
Voltage @ Frequency	230.0 V @ 60 HZ 110.0 V @ 50 HZ 115.0 V @ 60 HZ 220.0 V @ 50 HZ
Agency Approvals	UR CSA
Ambient Temperature	40 °C
Auxillary Box	No Auxillary Box
Auxillary Box Lead Termination	None
Base Indicator	Resilient
Bearing Grease Type	Polyrex EM (-20F +300F)
Blower	None
Current @ Voltage	3.000 A @ 230.0 V 3.300 A @ 220.0 V 6.000 A @ 115.0 V 6.600 A @ 110.0 V
Design Code	N
Drip Cover	No Drip Cover
Duty Rating	CONT
Efficiency @ 100% Load	74.0 %

## Part detail

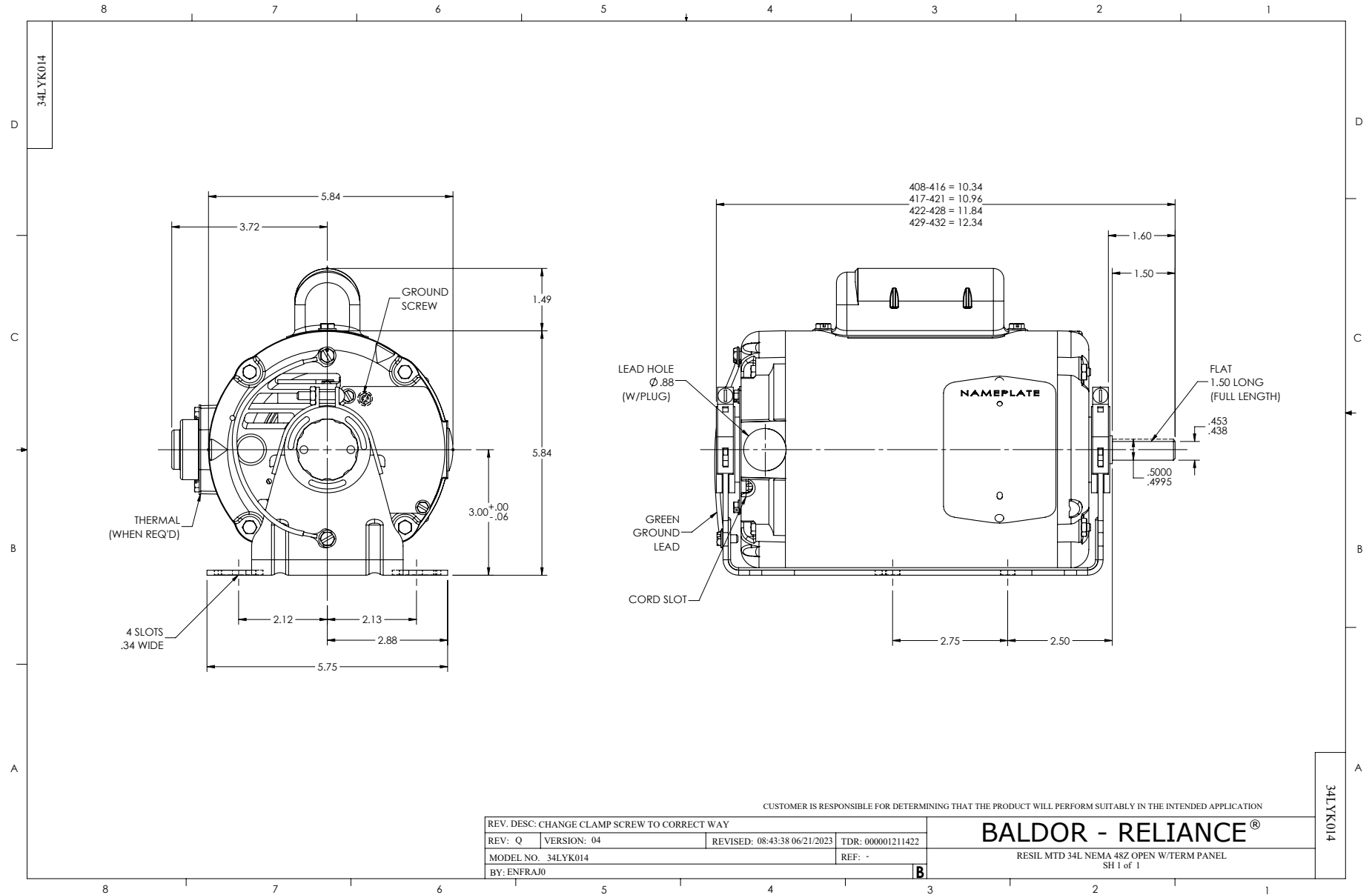
Revision	E
Type	AC
Mech. spec.	34K014
Base	
Status	PRD/A
Elec. spec.	34WGX041
Layout	34LYK014
Eff. date	09-18-2023
CD Diagram	CD0008
Poles	02
Leads	6#18,1#16 #4TH
Proprietary	False
Created date	01-23-2017

Electrically Isolated Bearing	Not Electrically Isolated
Feedback Device	NO FEEDBACK
Front Face Code	Resilient Mount
Front Shaft Indicator	None
Heater Indicator	No Heater
High Voltage Full Load Amps	3.0 a
Insulation Class	B
Inverter Code	Not Inverter
KVA Code	J
Lifting Lugs	No Lifting Lugs
Locked Bearing Indicator	No Locked Bearing
Motor Lead Exit	Terminal Panel Or Lead Hole
Motor Lead Quantity/Wire Size	6 @ 18 AWG
Motor Lead Termination	None
Motor Standards	NEMA
Motor Type	3420L
Mounting Arrangement	F1
Number of Poles	2
Overall Length	10.96 IN
Power Factor	69
Product Family	General Purpose
Pulley End Bearing Type	Ball
Pulley Face Code	Resilient Mount
Pulley Shaft Indicator	Standard
Rodent Screen	None
RoHS Status	ROHS COMPLIANT
Service Factor	1.25
Shaft Diameter	0.500 IN
Shaft Extension Location	Pulley End
Shaft Ground Indicator	No Shaft Grounding
Shaft Rotation	Reversible
Shaft Slinger Indicator	No Slinger
Speed	2850 rpm 3450 rpm

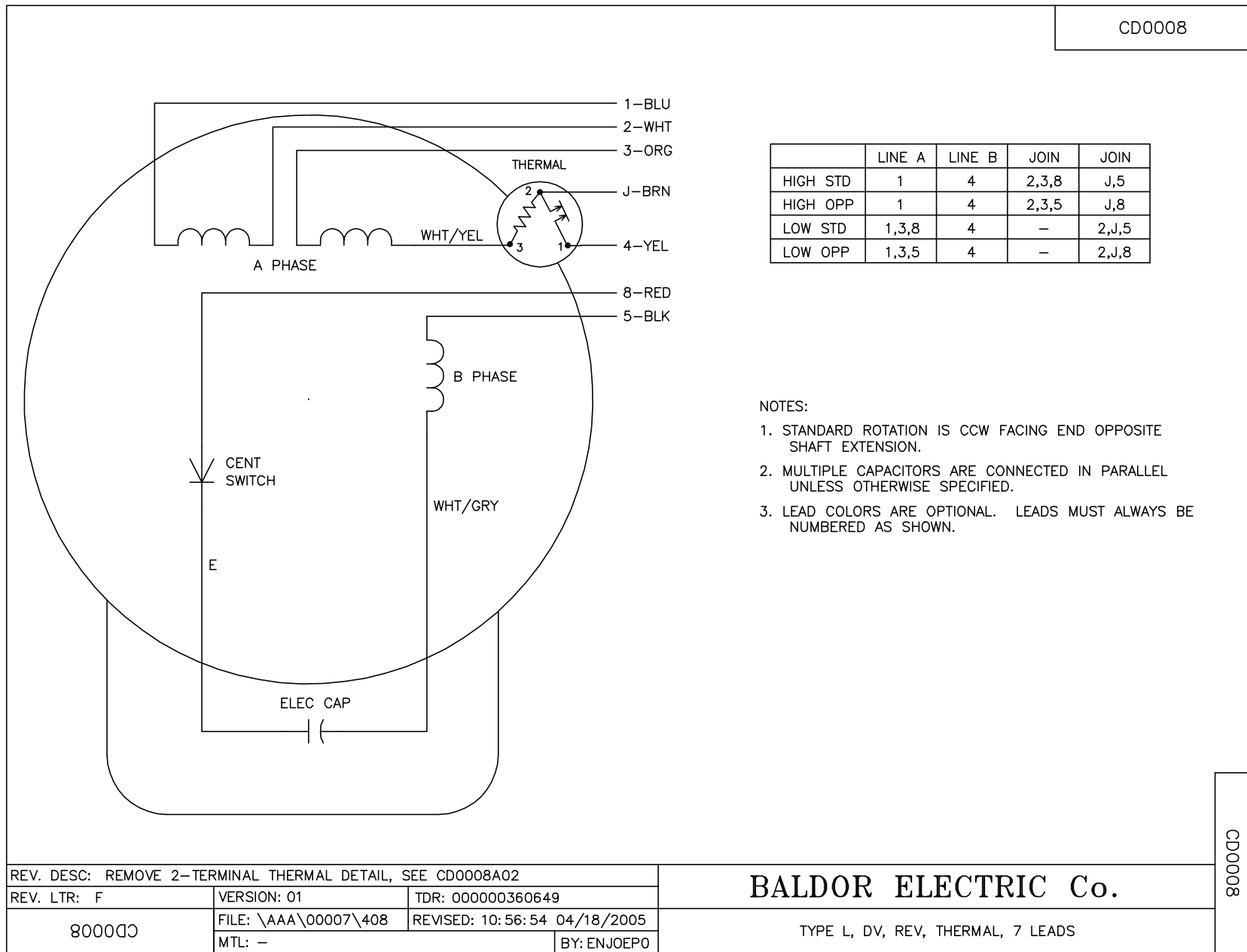
<b>Speed Code</b>	Single Speed
<b>Starting Method</b>	Direct on line
<b>Thermal Device - Bearing</b>	None
<b>Thermal Device - Winding</b>	None
<b>Vibration Sensor Indicator</b>	No Vibration Sensor
<b>Winding Thermal 1</b>	Automatic Thermal Overload
<b>Winding Thermal 1 Location</b>	SB
<b>Winding Thermal 2</b>	None

**Nameplate**

<b>NP1257L</b>									
<b>CAT.NO.</b>	RL1209A								
<b>SPEC.</b>	34K014X041G3								
<b>HP</b>	.5								
<b>VOLTS</b>	110/220//115/230								
<b>AMP</b>	6.6/3.3//6/3								
<b>RPM</b>	2850//3450								
<b>FRAME</b>	48			<b>HZ</b>	50//60	<b>PH</b>	1		
<b>SER.F.</b>	1.25	<b>CODE</b>	J	<b>DES</b>	N	<b>CL</b>	B		
<b>NEMA-NOM-EFF</b>	74	<b>PF</b>	69						
<b>RATING</b>	40C AMB-CONT								
<b>CC</b>									
<b>DE</b>	6203	<b>ODE</b>	6203						
<b>ENCL</b>	OPEN	<b>SN</b>							
	SFA 8/4//7/3.5								



CD0008



	LINE A	LINE B	JOIN	JOIN
HIGH STD	1	4	2,3,8	J,5
HIGH OPP	1	4	2,3,5	J,8
LOW STD	1,3,8	4	-	2,J,5
LOW OPP	1,3,5	4	-	2,J,8

NOTES:

1. STANDARD ROTATION IS CCW FACING END OPPOSITE SHAFT EXTENSION.
2. MULTIPLE CAPACITORS ARE CONNECTED IN PARALLEL UNLESS OTHERWISE SPECIFIED.
3. LEAD COLORS ARE OPTIONAL. LEADS MUST ALWAYS BE NUMBERED AS SHOWN.

REV. DESC: REMOVE 2-TERMINAL THERMAL DETAIL, SEE CD0008A02		
REV. LTR: F	VERSION: 01	TDR: 000000360649
800000	FILE: \AAA\00007\408	REVISED: 10:56:54 04/18/2005
	MTL: -	BY: ENJOEPO

**BALDOR ELECTRIC Co.**

TYPE L, DV, REV, THERMAL, 7 LEADS

CD0008