

ABB BALDOR RELIANCE III

Customer information packet

PL1327M

5HP, 3450RPM, 1PH, 60HZ, 56/56H, 3535LC, ODTF

Class - None

Division - Not Applicable

Specifications

Enclosure	ODTF
Frame	56/56H
Frame Material	Steel
Frequency	60.00 Hz
Haz Area Class and Group	None
Haz Area Division	Not Applicable
Motor Letter Type	Cap Start, Cap Run
Output @ Frequency	5.000 HP @ 60 HZ
Phase	1
Synchronous Speed @ Frequency	3600 RPM @ 60 HZ
Voltage @ Frequency	230.0 V @ 60 HZ
Agency Approvals	UR CSA
Ambient Temperature	40 °C
Auxiliary Box	NO AUXILLARY BOX
Auxiliary Box Lead Termination	None
Base Indicator	Rigid
Bearing Grease Type	Polyrex EM (-20F +300F)
Blower	None
Current @ Voltage	23.000 A @ 230.0 V 24.000 A @ 208.0 V
Drip Cover	Drip Cover
Duty Rating	CONT
Efficiency @ 100% Load	74.2 %
Electrically Isolated Bearing	Not Electrically Isolated
Feedback Device	NO FEEDBACK
Front Face Code	Drip Cover Mounting
Front Shaft Indicator	None
Heater Indicator	No Heater
High Voltage Full Load Amps	23.0 a
Insulation Class	F
Inverter Code	Not Inverter

Part Detail

Revision	AR
Type	AC
Mech. spec.	35L203
Base	
Status	PRD/A
Elec. spec.	35WGS322
Layout	35LYL203
Eff. date	05-14-2024
CD Diagram	CD0002A02
Poles	02
Leads	2#12 A PH,3#18 B&J
Proprietary	False
Created date	06-22-2007

KVA Code	F
Lifting Lugs	No Lifting Lugs
Locked Bearing Indicator	No Locked Bearing
Motor Lead Exit	Cap Box
Motor Lead Quantity/Wire Size	2 @ 12 AWG, A PH
Motor Lead Termination	Flying Leads
Motor Standards	NEMA
Motor Type	3535LC
Mounting Arrangement	F1
Number of Poles	2
Overall Length	13.81 IN
Power Factor	95
Product Family	General Purpose
Pulley End Bearing Type	Ball
Pulley Face Code	Standard
Pulley Shaft Indicator	Standard
Rodent Screen	None
RoHS Status	ROHS COMPLIANT
Service Factor	1.00
Shaft Diameter	0.625 IN
Shaft Extension Location	Pulley End
Shaft Ground Indicator	No Shaft Grounding
Shaft Rotation	Reversible
Shaft Slinger Indicator	No Slinger
Speed	3450 rpm
Speed Code	Single Speed
Starting Method	Direct on line
Thermal Device - Bearing	None
Thermal Device - Winding	Do Not Use
Vibration Sensor Indicator	No Vibration Sensor
Winding Thermal 1	Manual Thermal Overload
Winding Thermal 1 Location	KO
Winding Thermal 2	None

Nameplate

NP1257L									
CAT.NO.	PL1327M								
SPEC.	35L203S322								
HP	5								
VOLTS	230								
AMP	23								
RPM	3450								
FRAME	56/56H		HZ	60		PH	1		
SER.F.	1.00	CODE	F	DES	-	CL	F		
NEMA-NOM-EFF	74.2	PF	95						
RATING	40C AMB-CONT								
CC									
DE	6205	ODE	6203						
ENCL	ODTF	SN							

Accessories

Part number	Description	Multiplier
35-8764	C FACE KIT	A8
35EP1604A01SP	D-FLANGE KIT	

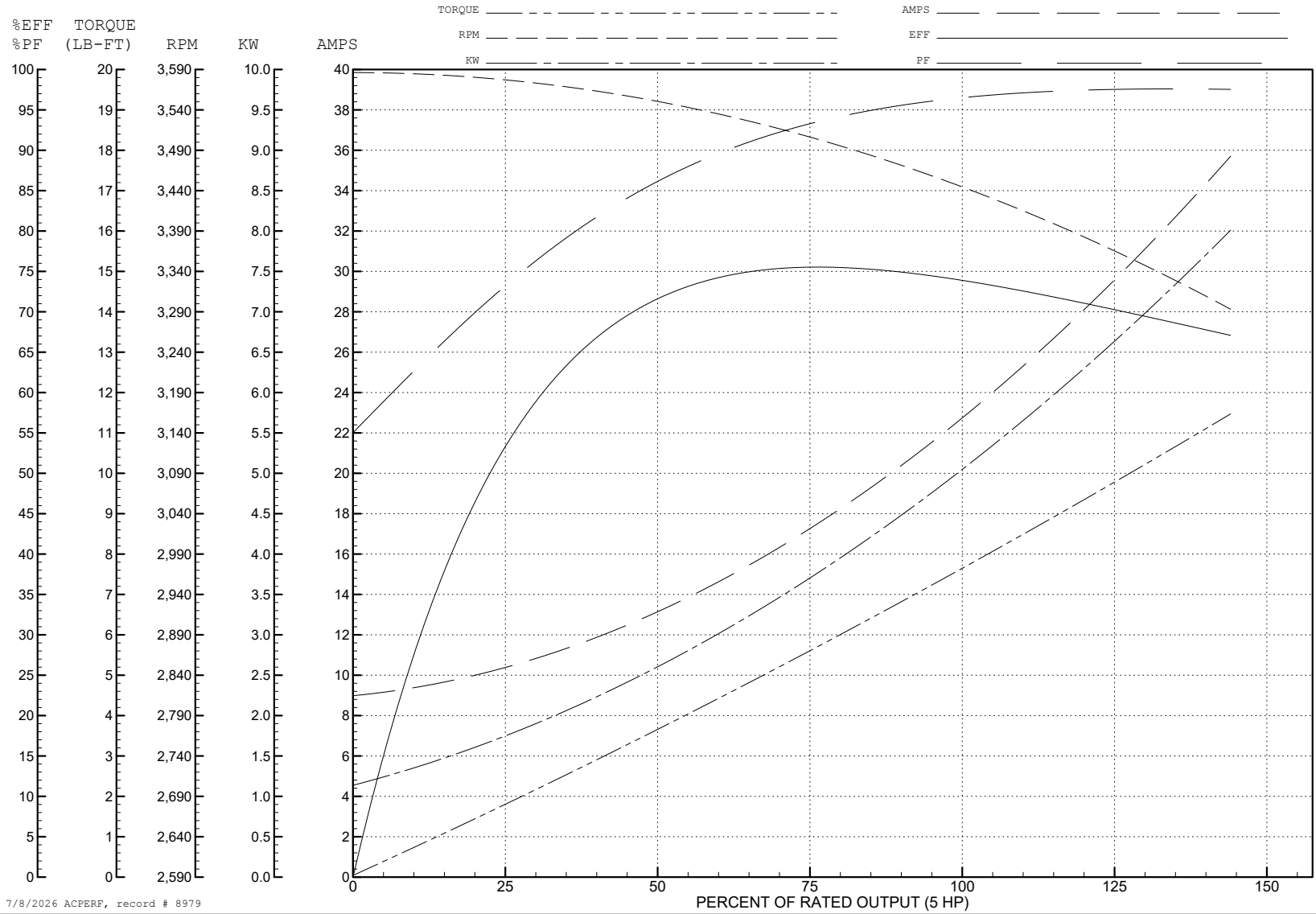
ABB Motors and Mechanical Inc.

WINDING # 35WGS322

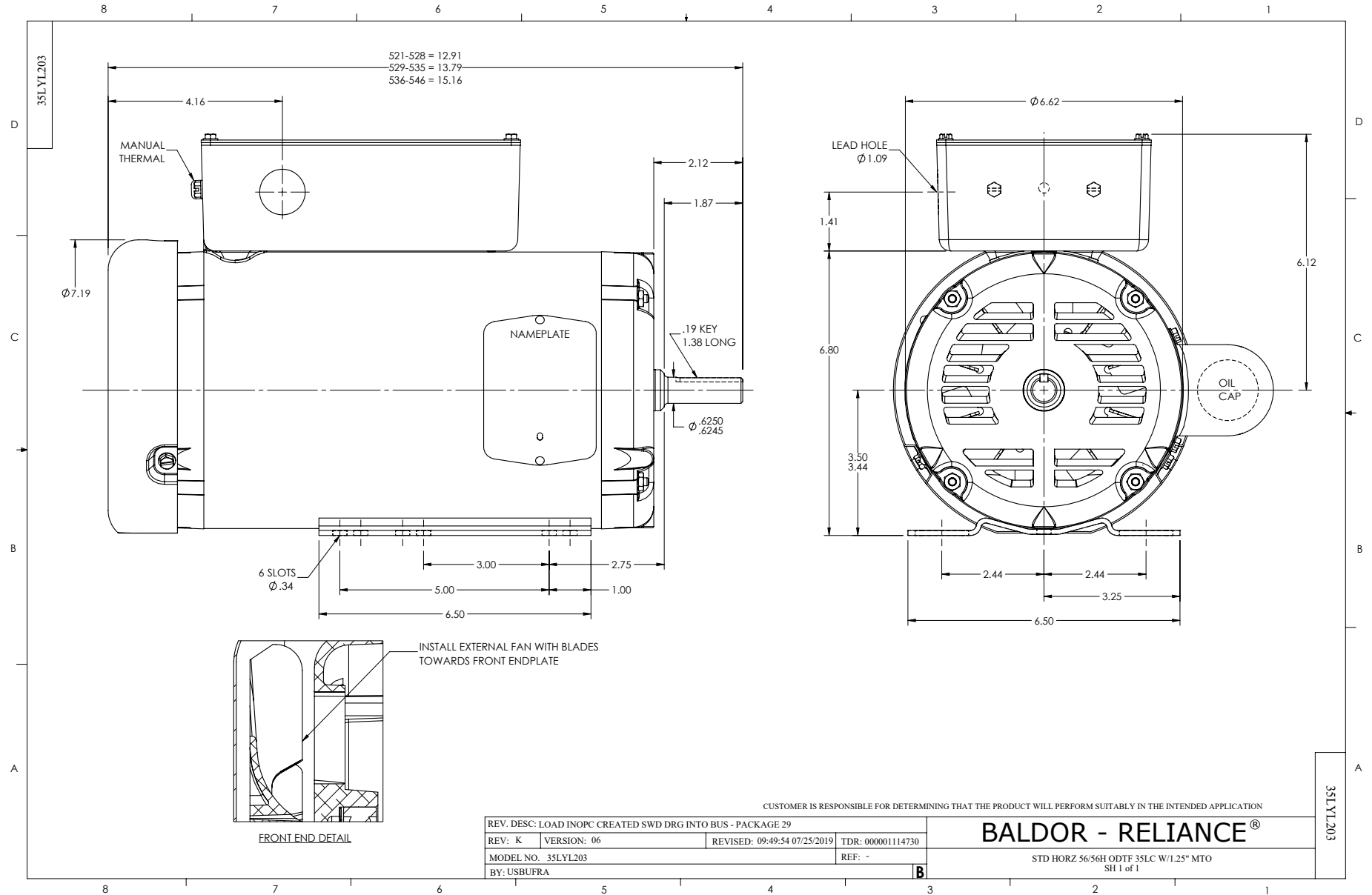
Typical performance - not guaranteed values.

5 HP 1 PH 60 HZ 3450 RPM 230 V 3535LC

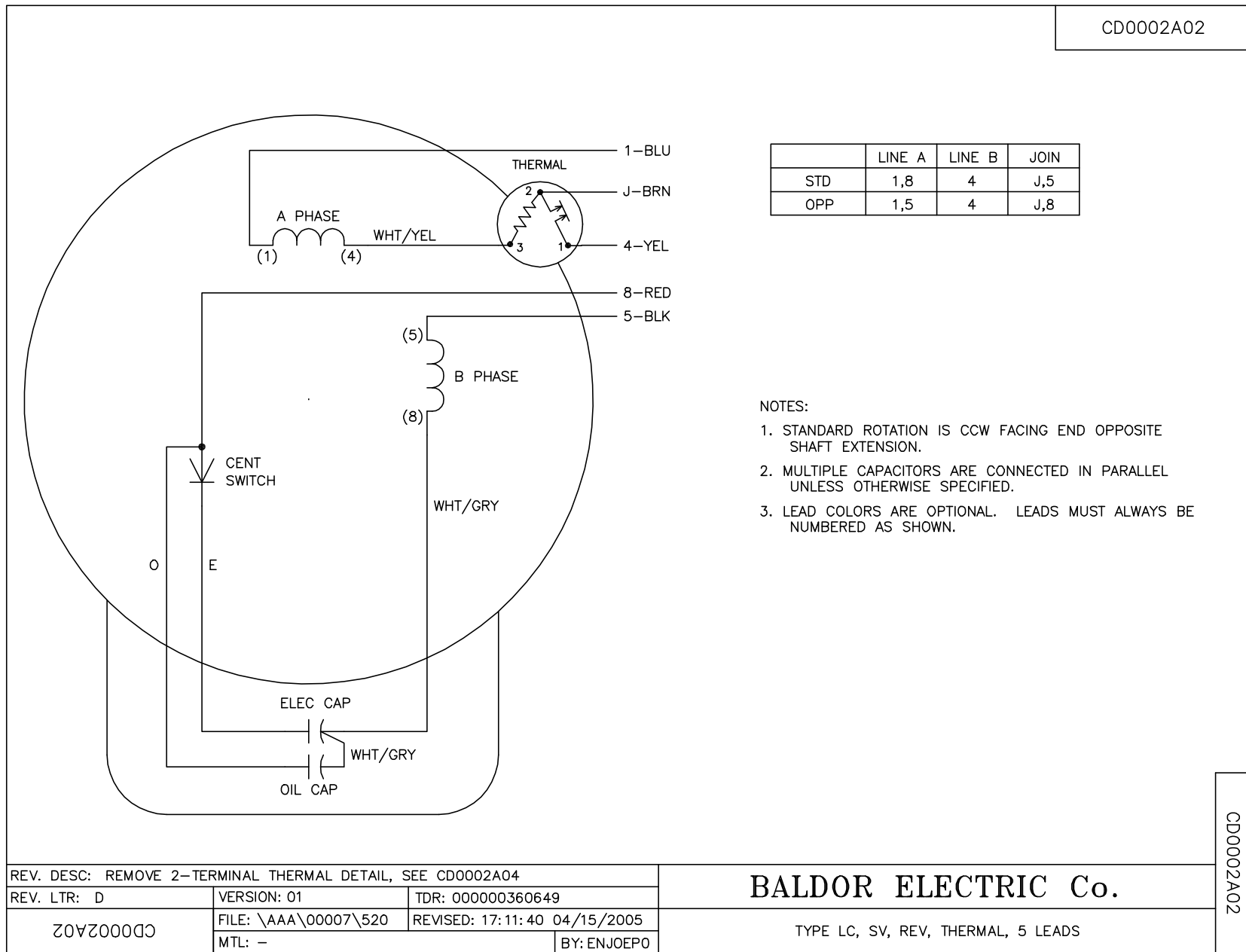
TORQUES (LB-FT): PO=18.8 PU=12.8 LR=14.7 LRA=122



7/8/2026 ACPERF, record # 8979



CD0002A02



REV. DESC: REMOVE 2-TERMINAL THERMAL DETAIL, SEE CD0002A04		
REV. LTR: D	VERSION: 01	TDR: 000000360649
CD0002A02	FILE: \AAA\00007\520	REVISED: 17:11:40 04/15/2005
	MTL: -	BY: ENJOEPO

BALDOR ELECTRIC Co.

TYPE LC, SV, REV, THERMAL, 5 LEADS

CD0002A02