

BALDOR • RELIANCE

Customer information packet

P36G4668

75HP, 1780RPM, 3PH, 60HZ, 365TC, A36056M, TEFC

Class - None

Division - Not Applicable

Copyright © All product information within this document is subject to ABB Motors and Mechanical Inc. copyright © protection, unless otherwise noted.

5/22/2024 3:08:41 PM

Specifications

Enclosure	TEFC
Frame	365TC
Frame Material	Iron
Frequency	60.00 Hz
Motor Letter Type	Three Phase
Output @ Frequency	75.000 HP @ 60 HZ
Phase	3
Synchronous Speed @ Frequency	1800 RPM @ 60 HZ
Voltage @ Frequency	230.0 V @ 60 HZ 460.0 V @ 60 HZ
XP Class and Group	None
XP Division	Not Applicable
Agency Approvals	CSA EEV CCSA US
Ambient Temperature	40 °C
Auxillary Box	No Auxillary Box
Base Indicator	Rigid
Bearing Grease Type	Polyrex EM (-20F +300F)
Current @ Voltage	87.000 A @ 460.0 V 174.000 A @ 230.0 V
Design Code	B
Drip Cover	No Drip Cover
Duty Rating	CONT
Efficiency @ 100% Load	94.1 %
Feedback Device	NO FEEDBACK
Heater Indicator	No Heater
High Voltage Full Load Amps	87.0 a
Insulation Class	F
Inverter Code	Inverter Ready
KVA Code	G
Lifting Lugs	No Lifting Lugs
Motor Lead Quantity/Wire Size	3 @ 4 AWG

Part detail

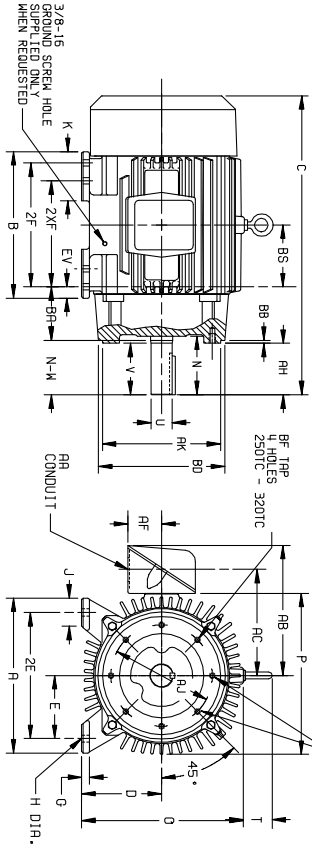
Revision	L
Type	AC
Mech. spec.	
Base	
Status	INA/A
Elec. spec.	A36WG0731
Layout	611740-003-SH1
Eff. date	03-03-2021
CD Diagram	416820-002
Poles	04
Leads	3#4,6#6
Proprietary	False
Created date	10-19-2010

Motor Standards	NEMA
Motor Type	A36056M
Mounting Arrangement	F1
Number of Poles	4
Overall Length	33.44 IN
Power Factor	86
Pulley End Bearing Type	Ball
Pulley Face Code	P-Base
Service Factor	1.15
Shaft Diameter	2.374 IN
Shaft Ground Indicator	No Shaft Grounding
Shaft Rotation	Reversible
Shaft Slinger Indicator	No Slinger
Speed	1780 rpm
Speed Code	Single Speed
Starting Method	Direct on line
Thermal Device - Bearing	None
Thermal Device - Winding	None

Nameplate

NP2531L									
CAT.NO.		SPEC NO.	P36G4668			FRAME	365TC		
HP	75	PHASE	3	DESIGN	B	TYPE	P		
RPM	1780	HZ	60	AMB	40	SF	1.15		
VOLTS	230/460	DUTY	CONT		INSUL.CLASS	F			
AMPS	174/87	ENCL	TEFC	CODE	G				
DRIVE END BEARING	65BC03J30X		NEMA-NOM-EFFICIENCY			94.1			
OPP D.E. BEARING	65BC03J30X								
	SUIT FOR 208V AT 190 AMPS				NOT FOR USE IN THE US				
SER.NO.		MOTOR WEIGHT							

DUTY MASTER ALTERNATING CURRENT MOTORS
 ENCLOSURE: TOTALLY ENCLOSED SQUIRREL-CAGE INDUCTION COOLING: FAN COOLED
 MOUNTING: FOOT, NEMA "C" FACE
 FRAMES 250TC THRU 440TC



DIMENSIONS ARE IN INCHES. SEE SHEET 2 FOR DIMENSIONS IN MILLIMETERS

FRAME	A	D(2)	E	G	H	J	K	EV	O	P	T	STEEL TERMINAL BOX				BF	MINI	AK				
												AA	AB	AC	AF				BA	BB	BD	DEPTH
254TC-289TC	12.50	6.25	5.00	.75	.56	2.50	---	1.00	13.25	5.44	1-1/4	10.75	8.75	2.50	4.75	2.50	9.00	1/2-13	.75	9.00	10.500	
294TC-289TC	13.75	7.00	5.50	.75	.56	2.50	---	1.00	14.75	14.88	2.44	1-1/2	12.75	10.00	3.19	4.75	2.50	11.25	1/2-13	.75	9.00	10.500
324TC-3615TC	15.50	8.00	6.25	.88	.69	2.75	4.50	1.38	16.69	17.00	2.44	2	13.19	11.44	4.25	5.25	2.50	13.12	5/8-11	.94	11.00	12.500
364TC-3615TC	17.00	9.00	7.00	.88	.69	2.75	3.88	1.38	18.50	19.50	2.94	3	18.06	14.00	5.38	5.88	2.50	13.00	5/8-11	.94	11.00	12.500
404TC-4051SC	19.00	10.00	8.00	1.12	.81	3.25	4.62	1.13	21.31	22.50	2.94	3	19.31	15.25	5.38	6.62	2.50	13.12	5/8-11	.94	11.00	12.500
444TC-4451SC	21.00	11.00	9.00	1.12	.81	3.25	5.25	1.25	23.38	25.25	3.25	3	23.38	18.12	6.50	7.50	2.50	16.75	5/8-11	.94	14.00	16.000

FRAME	SIZE	C	BS	B	ZF	N	AH	SHAFT AND KEY			WEIGHT LBS. (5)		
								V	U(3)	SO.		LGTH.	
254TC	25.06	5.00	12.00	---	8.25	4.06	3.75	4.00	1.625	3.75	2.88	3.75	
294TC	27.44	5.50	12.00	10.00	---	4.06	3.75	4.00	1.625	3.75	2.88	3.75	
324TC	27.44	6.50	13.00	---	9.50	5.00	4.38	4.62	1.875	4.38	5.00	3.25	4.45
364TC	26.06	6.50	13.00	---	9.50	5.00	3.62	3.25	1.625	3.00	3.75	1.88	4.45
404TC	27.44	6.50	13.00	---	9.50	5.00	4.38	4.62	1.875	4.38	5.00	3.25	4.60
444TC	26.06	6.50	13.00	---	9.50	5.00	3.62	3.25	1.625	3.00	3.75	1.88	4.60
324TC	28.94	6.00	14.75	---	10.50	6.02	5.00	5.25	2.125	5.00	5.00	2.00	5.82
364TC	28.94	6.00	14.75	---	10.50	6.02	5.00	5.25	2.125	5.00	5.00	2.00	5.82
404TC	30.44	6.00	14.75	---	12.00	6.62	5.62	5.88	2.375	5.50	5.00	2.00	5.95
444TC	28.94	6.00	14.75	---	12.00	6.62	5.62	5.88	2.375	5.50	5.00	2.00	5.95
364TC	33.44	6.12	15.00	---	11.25	6.25	5.62	5.88	2.375	5.62	6.25	4.25	8.15
364TC	33.44	6.12	15.00	---	11.25	6.25	5.62	5.88	2.375	5.62	6.25	4.25	8.15
364TC	31.31	6.12	15.00	---	12.25	6.25	5.62	5.88	2.375	5.62	6.25	4.25	8.55
365TC	33.44	6.12	15.00	---	12.25	6.25	5.62	5.88	2.375	5.62	6.25	4.25	8.55
404TC	31.31	6.12	15.00	---	12.25	7.50	7.00	7.25	2.875	7.00	7.50	5.82	11.65
404TC	38.31	6.88	16.00	---	12.25	7.50	7.00	7.25	2.875	7.00	7.50	5.82	11.65
404TC	38.31	6.88	16.00	---	12.25	7.50	7.00	7.25	2.875	7.00	7.50	5.82	11.65
404TC	38.31	6.88	16.00	---	12.25	7.50	7.00	7.25	2.875	7.00	7.50	5.82	11.65
409TC	38.31	6.88	16.00	---	13.75	7.50	7.00	7.25	2.875	7.00	7.50	5.82	12.05
409TC	35.31	6.88	16.00	---	13.75	7.50	7.00	7.25	2.875	7.00	7.50	5.82	12.05
444TC	44.62	8.25	19.00	---	14.50	8.94	8.25	8.50	3.375	8.25	8.75	6.88	16.08
444TC	40.88	8.25	19.00	---	14.50	8.94	8.25	8.50	3.375	8.25	8.75	6.88	16.08
445TC	44.62	8.25	19.00	---	16.50	8.94	8.25	8.50	3.375	8.25	8.75	6.88	17.98
445TC	40.88	8.25	19.00	---	16.50	8.94	8.25	8.50	3.375	8.25	8.75	6.88	17.98

- (1) SPECIAL DIMENSIONS APPLYING TO THIS ORDER ON THIS LINE. CONDUIT BOX LOCATED ON OPPOSITE SIDE WHEN F-2-W-1, W-4-W-5-W-7, OR C-1 MOUNTING IS SPECIFIED.
- (2) "D" VARIES [250TC - 320TC +.00, -.03] [360TC - 440TC +.00, -.06]. IF MOUNTING CLEARANCE DETAILS ARE REQUIRED, CONSULT FACTORY.
- (3) "U" VARIES [625 AND LARGER +.000, -.001]. MAXIMUM PERMISSIBLE SHAFT RUNOUT WHEN MEASURED AT END OF STD. SHAFT EXTENSION IS .002 T.I.R. UP TO AND INCLUDING 1.625 DIA. AND .003 T.I.R. 1.625 DIA. TO 5 INCH DIA.
- (4) ALL FRAMES HAVE EIGHT MOUNTING HOLES FOR DUAL MOUNTING. FACE RUNOUT AND [250TC - 280TC INCL. .004 MAX. T.I.R. ECCENTRICITY] [320TC - 440TC INCL. .007 MAX. T.I.R.]
- (5) MOTOR WEIGHTS MAY VARY BY 15% DEPENDING UPON RATING.
- (6) "K" VARIES [250TC - 280TC +.000, -.003] [320TC - 440TC +.000, -.005]
- (7) "N-W" VARIES +.00, -.25

FRAME: _____ TYPE: _____ CERTIFIED FOR: _____
 ORDER: _____ ITEM: _____ HP: _____ RPM: _____ PH: _____ HZ: _____ VOLTS: _____
 RELIANCE SALES ORDER: _____ APPROVED BY: _____ DATE: _____

LHS-003-004-119

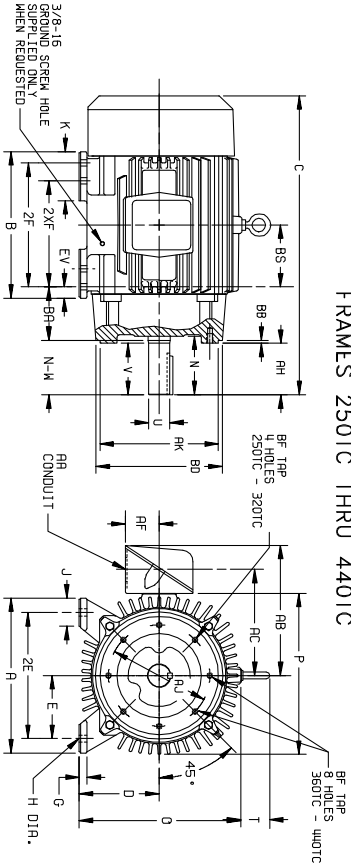
CUSTOMER IS RESPONSIBLE FOR DETERMINING THAT MOTOR PERFORMANCE IS SUITABLE IN THE APPLICATION.

REV. DESC: REMOVING TITLE BLOCK	VERSION: 01	TDR: 00000441900
FILE: \RAG\00003\380	REVISED: 09:15:38 08/28/2007	BY: RAGRHX
MTL: -		

Baldor • Dodge • Reliance

DIM SHEET 250TC THRU 440TC

DUTY MASTER ALTERNATING CURRENT MOTORS
 SQUIRREL-CAGE INDUCTION
 ENCLOSURE: TOTALLY ENCLOSED
 MOUNTING: FOOT, NEMA "C" FACE
 COOLING: FAN COOLED
 FRAMES 250TC THRU 440TC



DIMENSIONS ARE IN MILLIMETERS- SEE SHEET 1 FOR DIMENSIONS IN INCHES

FRAME	A	D(2)	E	G	H	J	K	EV	O	P	T	AA(B)	AB	AC	AF	BA	BB	BD	BF(8)	BN	MA	AK
254TC-296TC	317.5	158.8	127.0	19.0	14.2	63.5	---	25.4	336.5	562.0	-1/-1	427.3	222.3	63.5	120.7	6.4	228.6	172-13	19.0	184.1	215.90	
296TC-296TSC	349.2	177.8	139.7	19.0	14.2	63.5	---	25.4	374.6	578.0	62.0	-1/-1	332.8	254.0	81.0	120.7	6.4	286.7	172-13	19.0	228.6	266.70
324TC-328TSC	393.7	203.3	158.8	22.4	17.5	69.9	114.3	35.1	423.9	631.8	62.0	2	356.8	290.6	108.0	133.3	6.4	333.2	5/8-11	23.9	279.4	317.50
364TC-369TSC	431.8	228.6	177.8	22.4	17.5	69.9	98.6	35.1	469.9	495.3	74.7	3	458.7	355.6	136.7	149.4	6.4	330.2	5/8-11	23.9	279.4	317.50
404TC-409TSC	482.6	254.0	203.2	28.4	20.6	82.5	117.3	28.7	541.3	571.5	74.7	3	490.5	387.3	136.7	168.1	6.4	333.2	5/8-11	23.9	279.4	317.50
444TC-449TSC	533.4	279.4	228.6	28.4	20.6	82.5	133.3	31.7	593.9	641.3	82.5	3	533.9	460.2	165.1	190.5	6.4	425.4	5/8-11	23.9	355.6	406.40

FRAME	C	BS	B	ZF	(4)	N	AH	SHAFT AND KEY				WEIGHT (5)	
								N-(W7)	U(3)	V	SO		LGTH
254TC	636.5	127.0	304.8	---	209.6	103.1	95.3	101.6	41.27	95.3	9.52	73.2	142
296TC	636.5	127.0	304.8	254.0	---	103.1	95.3	101.6	41.27	95.3	9.52	73.2	147
324TC	697.0	139.7	330.2	---	241.3	127.0	117.3	117.3	47.63	111.3	12.70	82.5	201
364TC	661.9	139.7	330.2	---	241.3	91.9	76.2	82.5	41.27	76.2	9.52	47.8	208
404TC	661.9	139.7	330.2	279.4	---	127.0	117.3	117.3	47.63	111.3	12.70	82.5	208
444TC	773.2	152.4	374.6	---	266.7	142.7	127.0	133.3	53.97	127.0	12.70	98.6	251
324TSC	735.1	152.4	374.6	304.8	---	142.7	127.0	133.3	53.97	127.0	12.70	98.6	251
328TSC	773.2	152.4	374.6	304.8	---	142.7	127.0	133.3	53.97	127.0	12.70	98.6	269
364TSC	849.4	152.4	381.0	---	285.7	158.8	142.7	149.4	47.63	142.7	15.88	108.0	369
364TSC	849.4	152.4	381.0	---	285.7	104.6	104.6	104.6	47.63	104.6	12.70	50.8	386
369TSC	849.4	152.4	381.0	311.1	---	104.6	104.6	104.6	47.63	104.6	12.70	50.8	386
409TSC	933.7	174.8	406.4	---	311.1	142.7	101.6	182.0	73.02	101.6	12.70	82.5	528
404TSC	868.9	174.8	406.4	---	311.1	142.7	101.6	182.0	73.02	101.6	12.70	82.5	528
409TSC	973.1	174.8	406.4	349.2	---	190.5	177.8	184.1	73.02	177.8	19.05	142.7	546
444TSC	1133.3	209.6	482.6	---	368.3	227.1	209.6	215.9	85.72	209.6	22.22	174.8	729
449TSC	1133.3	209.6	482.6	419.1	---	227.1	209.6	215.9	85.72	209.6	22.22	174.8	729
449TSC	1038.4	209.6	482.6	419.1	---	313.8	114.3	120.7	60.33	114.3	15.88	76.2	808

- (1) SPECIAL DIMENSIONS APPLYING TO THIS ORDER ON THIS LINE. CONDUIT BOX LOCATED ON OPPOSITE SIDE WHEN F-2-W-1.
- (2) "D" VARIES -250TC - 320TC +0, -8
-360TC - 440TC +0, -15
W-4-W-5-W-7, OR C-1 MOUNTING IS SPECIFIED.
- (3) "U" VARIES -41.27 AND LARGER +0.0, -0.3
IF MOUNTING CLEARANCE DETAILS ARE REQUIRED, CONSULT FACTORY.
- (4) ALL FRAMES HAVE EIGHT MOUNTING HOLES FOR DUAL MOUNTING. MAXIMUM PERMISSIBLE SHAFT RUNOUT WHEN MEASURED AT END OF STD. SHAFT EXTENSION IS .05 T.I.R. UP TO AND INCLUDING 41.27 DIA. AND .08 T.I.R. UP TO 127.00 MILL DIA.
- (5) MOTOR WEIGHTS MAY VARY BY 15% DEPENDING UPON RATING. FACE RUNOUT AND -250TC - 280TC INCL. 10 MAX. T.I.R.
-320TC - 440TC INCL. 18 MAX. T.I.R.
- (6) "AK" VARIES -250TC - 280TC +0.0, -0.8
-320TC - 440TC +0.0, -1.3
- (7) "N-W" VARIES +0, -6.4
- (8) DIMENSIONS ARE IN INCHES.

FRAME _____ TYPE _____ CERTIFIED FOR _____ RPM _____ APPROVED BY _____ PH _____ HZ _____ DATE _____ VOLTS _____

ORDER _____ ITEM _____ HP _____

RELIANCE SALES ORDER _____

SHS-003-04/119

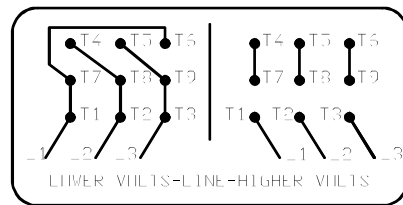
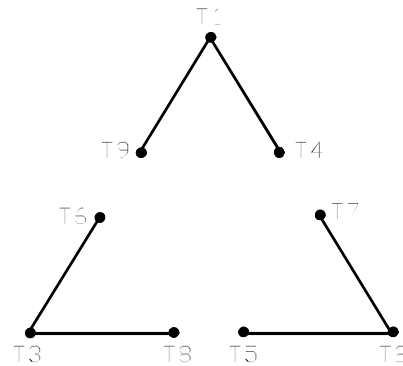
CUSTOMER IS RESPONSIBLE FOR DETERMINING THAT MOTOR PERFORMANCE IS SUITABLE IN THE APPLICATION.

REV. DESC: REMOVING TITLE BLOCK	VERSION: 01	TDR: 00000441900
REV. LTR: A	REVISED: 09:17:32 08/28/2007	BY: RAGRKH
FILE: \RAG\00003\381		
MTL: -		

Baldor • Dodge • Reliance
 DIM SHEET 250TC THRU 440TC

416820-002

A-C MOTOR
 CONNECTION DIAGRAM
 STANDARD 9 LEAD DELTA-CONNECTED



(N.P. 1575-B)

416820-002

REV. DESC: FONT CHANGE FOR PDF SEARCHABLE		
REV. LTR: A	VERSION: 01	TDR: 000001009382
FILE: \MGA\00000\661	REVISED: 02:46:19 02/13/2020	BY: MGHMTT
MTL: -		© □

BALDOR - RELIANCE®

CONN DIAG - STANDARD 9 LEAD, DELTA-CONNECTED

SH 1 of 1