

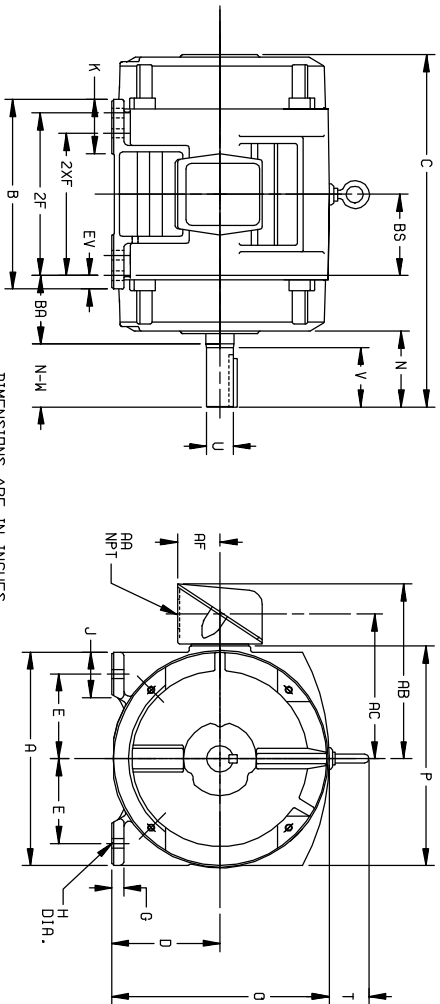
DUTY MASTER ALTERNATING CURRENT MOTORS

SQUIRREL-CAGE INDUCTION
CAST IRON CONSTRUCTION

ENCLOSURE: PROTECTED
MOUNTING: FOOT

COOLING: SELF-VENTILATED

FRAMES 250T THRU 440T



DIMENSIONS ARE IN INCHES

FRAME SIZE	A	DK(2)	E	G	H	J	K	D	P	T	CAST IRON TERMINAL BOX					
											AA	AB	AC	AF	BA	EV
254T-256T	12.50	6.25	5.00	.69	.56	2.25	3.50	12.61	12.69	2.44	1-1/4	10.25	8.25	2.50	4.25	.62
284T-286T	14.00	7.00	5.50	.75	.56	2.75	3.75	14.12	14.31	2.44	1-1/2	12.06	9.62	3.19	4.75	1.00
324T-326T	15.75	8.00	6.25	.88	.69	3.12	4.00	16.10	16.42	2.44	2	14.75	11.00	3.62	5.25	1.00
364T-365T	17.00	9.00	7.00	.88	.69	3.00	3.62	18.30	19.56	2.94	3	18.00	13.81	4.12	5.88	1.00
404T-405T	19.00	10.00	8.00	1.12	.81	3.25	4.75	20.56	21.81	2.94	3	19.00	14.81	3.12	6.62	1.12
444T-445T	21.00	11.00	9.00	1.12	.81	3.25	5.25	22.91	23.62	3.25	3	21.44	16.69	5.00	7.50	1.25

(1)

FRAME SIZE	C	BS	B	ZF	(4) X'F	N	SHAFT AND KEY						WEIGHT LBS. (5)
							N-W(6)	UC(3)	V	SQ.	LGTH.		
254T	22.44	5.00	11.25	---	8.25	4.25	4.00	1.625	3.75	.375	.375	2.75	265
256T	22.44	5.00	11.25	10.00	---	4.25	4.00	1.625	3.75	.375	.375	2.75	275
284T	24.94	5.50	13.00	---	9.50	4.88	4.62	1.875	4.38	.500	.500	3.25	340
284T	23.56	5.50	13.00	---	9.50	3.50	3.25	1.625	3.00	.375	1.88	3.40	340
286T	24.94	5.50	13.00	11.00	---	4.88	4.62	1.875	4.38	.500	.325	3.70	370
286T	23.56	5.50	13.00	11.00	---	3.50	3.25	1.625	3.00	.375	1.88	3.70	370
324T	27.56	6.00	14.00	---	10.50	5.50	5.25	2.125	5.00	.500	.375	4.80	480
324T	26.06	6.00	14.00	12.00	---	4.00	3.75	1.875	3.50	.500	.500	2.00	520
326T	27.56	6.00	14.00	12.00	---	5.50	5.25	2.125	5.00	.500	.375	5.20	520
364T	29.70	6.12	14.25	---	11.25	6.12	5.88	2.375	5.62	.625	.425	7.35	735
364T	27.58	6.12	14.25	---	11.25	4.00	3.75	1.875	3.50	.500	.500	2.00	730
365T	29.70	6.12	14.25	12.25	---	6.12	5.88	2.375	5.62	.625	.425	7.75	775
365T	27.58	6.12	14.25	12.25	---	4.00	3.75	1.875	3.50	.500	.500	2.00	770
404T	34.00	6.88	16.00	---	12.25	7.62	7.25	2.875	7.00	.750	.550	10.45	1045
404T	31.00	6.88	16.00	---	12.25	4.62	4.25	2.125	4.00	.500	.275	10.40	1040
405T	34.00	6.88	16.00	13.75	---	7.62	7.25	2.875	7.00	.750	.550	10.85	1085
405T	31.00	6.88	16.00	13.75	---	4.62	4.25	2.125	4.00	.500	.275	10.80	1080
444T	39.56	8.25	19.00	---	14.50	8.94	8.50	3.375	8.25	.875	6.88	17.35	1735
444T	35.81	8.25	19.00	---	14.50	5.19	4.75	2.375	4.50	.625	3.00	17.30	1730
445T	39.56	8.25	19.00	16.50	---	8.94	8.50	3.375	8.25	.875	6.88	17.75	1775
445T	35.81	8.25	19.00	16.50	---	5.19	4.75	2.375	4.50	.625	3.00	17.70	1770

(1)

- (1) SPECIAL DIMENSIONS APPLYING TO THIS ORDER ON THIS LINE.
- (2) 'D' VARIES ———— 250T - 320T +.00, -.03
360T - 440T +.00, -.06.
- (3) 'U' VARIES +.000, -.001
- (4) ALL FRAMES HAVE EIGHT MOUNTING HOLES FOR DUAL MOUNTING.
- (5) MOTOR WEIGHTS MAY VARY BY 1% DEPENDING UPON RATING.
- (6) 'N-W' VARIES +.00, -.25.

CONDUIT BOX LOCATED ON OPPOSITE SIDE WHEN F-2,W-1, W-4,W-5,W-7, OR C-1 MOUNTING IS SPECIFIED.
IF MOUNTING CLEARANCE DETAILS ARE REQUIRED, CONSULT FACTORY.
MAXIMUM PERMISSIBLE SHAFT RUNOUT WHEN MEASURED AT END OF STD. SHAFT EXTENSION IS .002 T.I.R. UP TO AND INCLUDING 1.625 DIA. AND .003 T.I.R. ABOVE 1.625 TO 5 INCH DIA.

FRAME— TYPE— CERTIFIED FOR—
 ORDER— ITEM— HP— RPM— PH— HZ— VOLTS—
 SALES ORDER— APPROVED BY— DATE—

CUSTOMER IS RESPONSIBLE FOR DETERMINING THAT BALDOR'S PRODUCT WILL PERFORM SUITABLY IN THE INTENDED APPLICATION.

REV. DESC: LOADED TO BUS		
REV. LTR: A	VERSION: 01	TDR: 000000546464
FILE: \RAG\00009\279	REVISED: 03:18:49 06/22/2010	BY: RAGHZT
MTL: -		

BALDOR

DIM SHT-250T-440T

SH 1 of 1