

BALDOR • RELIANCE

Customer information packet

MVM3461D

.37KW, 1725RPM, 3PH, 60HZ, D71D, 3320M, TEFC

Specifications

Enclosure	TEFC
Frame	D71D
Frame Material	Steel
Frequency	60.00 Hz
Motor Letter Type	Three Phase
Output @ Frequency	.370 KW @ 60 HZ
Phase	3
Synchronous Speed @ Frequency	1800 RPM @ 60 HZ
Voltage @ Frequency	460.0 V @ 60 HZ 230.0 V @ 60 HZ
Agency Approvals	CSA UR
Ambient Temperature	40 °C
Auxillary Box	No Auxillary Box
Auxillary Box Lead Termination	None
Base Indicator	No Mounting
Bearing Grease Type	Polyrex EM (-20F +300F)
Blower	None
Current @ Voltage	1.200 A @ 460.0 V 2.300 A @ 208.0 V 2.400 A @ 230.0 V
Design Code	B
Drip Cover	No Drip Cover
Duty Rating	CONT
Efficiency @ 100% Load	71.0 %
Electrically Isolated Bearing	Not Electrically Isolated
Feedback Device	NO FEEDBACK
Feedback Signal	NONE
Frame Prefix	D
Front Face Code	Standard
Front Shaft Indicator	None
Heater Indicator	No Heater

Part detail

Revision	AW
Type	AC
Mech. spec.	33E138
Base	
Status	PRD/A
Elec. spec.	33WG0673
Layout	33LYE138
Eff. date	08-27-2024
CD Diagram	CD0005A05
Poles	04
Leads	9#18
Proprietary	False
Created date	06-25-2007

High Voltage Full Load Amps	1.2 a
Insulation Class	F
Inverter Code	Not Inverter
KVA Code	-
Lifting Lugs	No Lifting Lugs
Locked Bearing Indicator	Locked Bearing
Motor Lead Exit	Ko Box
Motor Lead Quantity/Wire Size	9 @ 18 AWG
Motor Lead Termination	Flying Leads
Motor Standards	IEC
Motor Type	3320M
Mounting Arrangement	F2
Number of Poles	4
Overall Length	10.74 IN
Power Factor	54
Product Family	General Purpose
Pulley End Bearing Type	Ball
Pulley Face Code	D-Flange
Pulley Shaft Indicator	Tapped & Key
Rodent Screen	None
RoHS Status	ROHS COMPLIANT
Service Factor	1.15
Shaft Diameter	0.552 IN
Shaft Extension Location	Pulley End
Shaft Ground Indicator	No Shaft Grounding
Shaft Rotation	Reversible
Shaft Slinger Indicator	No Slinger
Speed	1725 rpm
Speed Code	Single Speed
Starting Method	Direct on line
Thermal Device - Bearing	None
Thermal Device - Winding	None
Vibration Sensor Indicator	No Vibration Sensor
Winding Thermal 1	None

Winding Thermal 2

None

Nameplate

NP1379L					
CAT.NO.	MVM3461D				
SPEC.	33E138-0673G1				
IEC FRAME	D71D	K.W.	.37KW TE		
VOLTS	230/460				
AMP	2.4/1.2				
RPM	1725	I.P.	54		
HZ	60	PH	3	CL	F
SER.F.	1.15	DES	B	CODE	-
NEMA-NOM-EFF	71	PF	54		
RATING	40C AMB-CONT				
CC					
DE	6203	ODE	6203		
SER. #					
	SFA 2.5/1.25				

AC Induction Motor Performance Data

Record # 21042

Typical performance - not guaranteed values

Winding: 33WG0673-R005		Type: 3320M		Enclosure: TEFC	
Nameplate Data			460 V, 60 Hz: High Voltage Connection		
Rated Output (KW)	.37		Full Load Torque	1.5 LB-FT	
Volts	230/460		Start Configuration	direct on line	
Full Load Amps	2.4/1.2		Breakdown Torque	6.9 LB-FT	
R.P.M.	1725		Pull-up Torque	5.2 LB-FT	
Hz	60 Phase	3	Locked-rotor Torque	6 LB-FT	
NEMA Design Code	B KVA Code	-	Starting Current	6 A	
Service Factor (S.F.)	1.15		No-load Current	1.05 A	
NEMA Nom. Eff.	71 Power Factor	54	Line-line Res. @ 25°C	28.9 Ω	
Rating - Duty	40C AMB-CONT		Temp. Rise @ Rated Load	67°C	
S.F. Amps	2.5/1.25		Temp. Rise @ S.F. Load	72°C	

Load Characteristics 460 V, 60 Hz, 0.37 KW

% of Rated Load	25	50	75	100	125	150	S.F.
Power Factor	29	40	49	58	65	70	62
Efficiency	37.7	53.4	61.5	65.8	68.1	69	67.2
Speed	1770	1752	1732	1710	1687	1661	1696
Line amperes	1.07	1.1	1.16	1.24	1.33	1.45	1.29

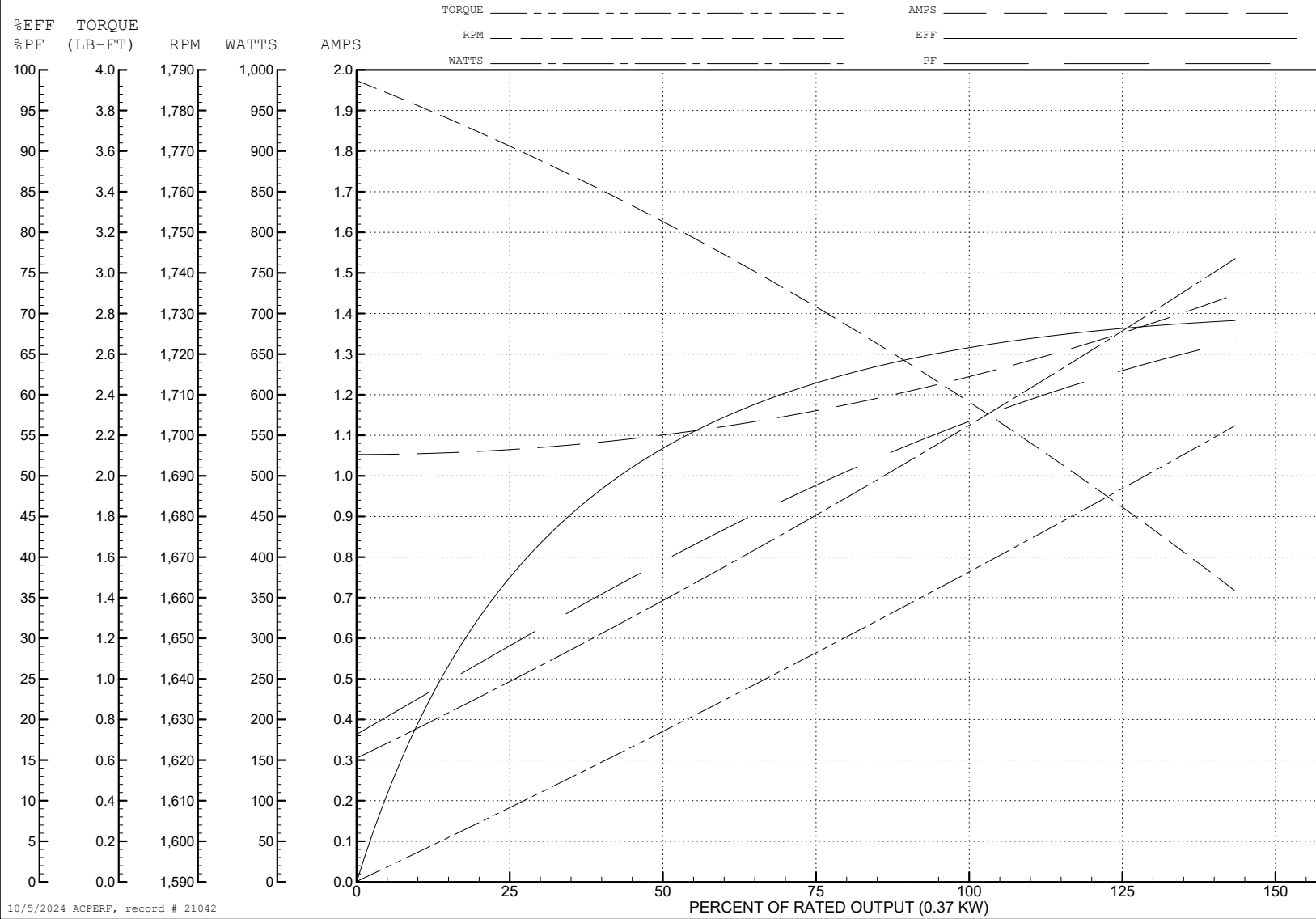
ABB Motors and Mechanical Inc.

WINDING # 33WG0673

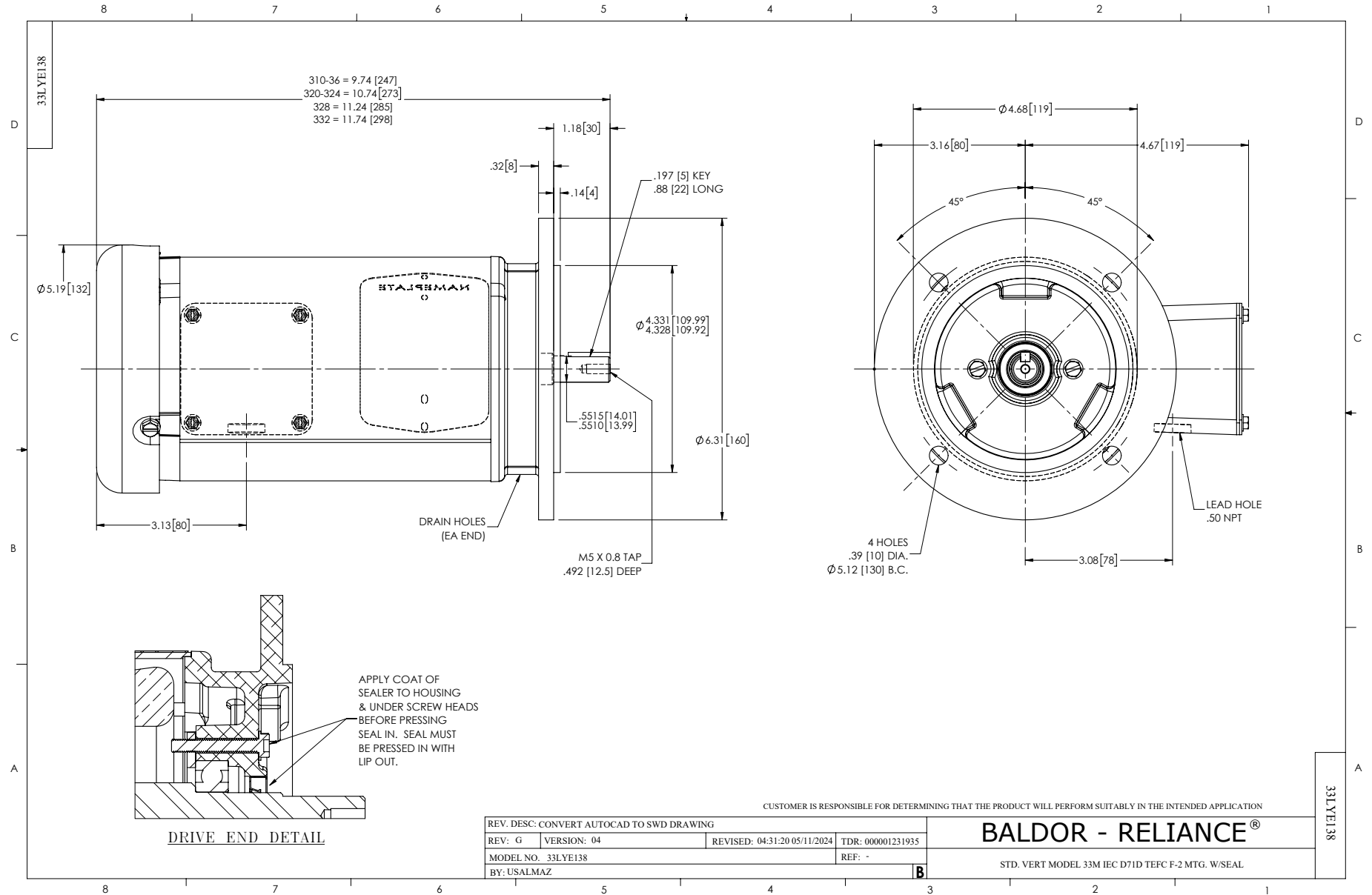
0.37 KW 3 PH 60 HZ 1725 RPM 460 V 3320M

Typical performance - not guaranteed values.

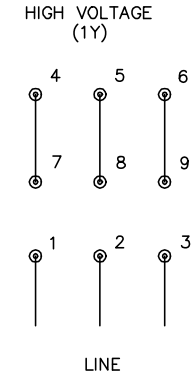
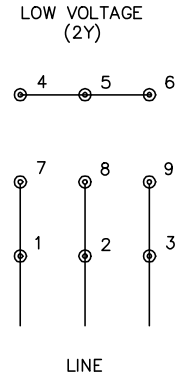
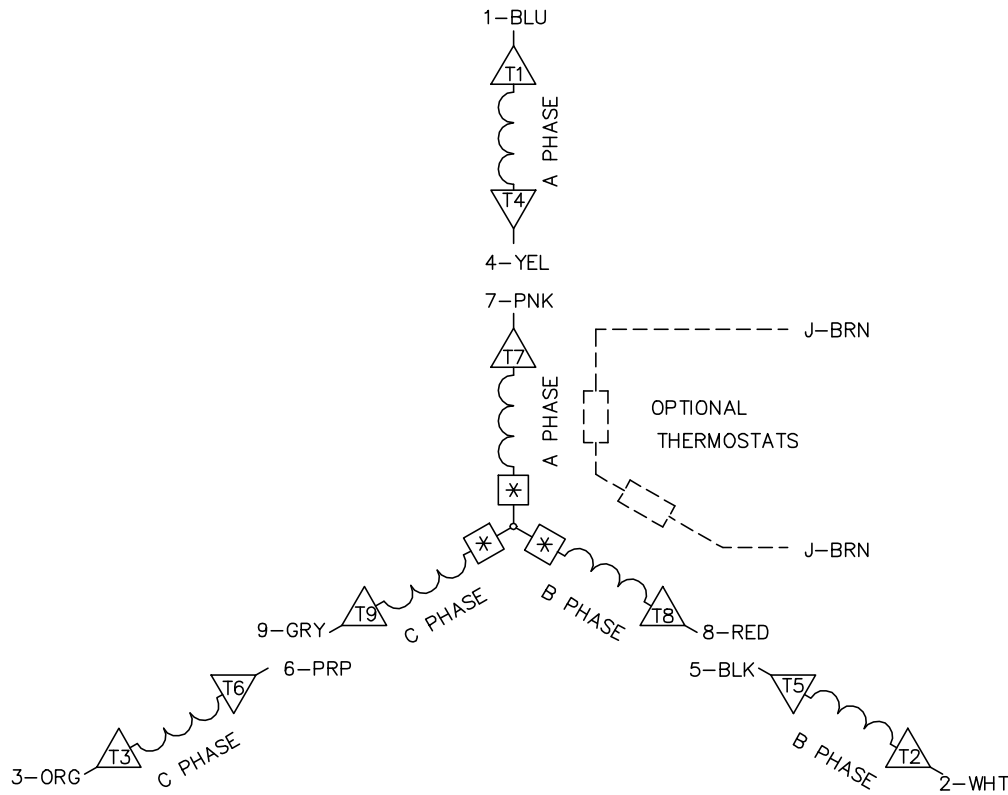
TORQUES (LB-FT) : PO=6.9 PU=5.2 LR=6 LRA=6



10/5/2024 ACPERF, record # 21042



CD0005A05



NOTES:

1. INTERCHANGE ANY TWO LINE LEADS TO REVERSE ROTATION.
2. OPTIONAL THERMOSTATS ARE PROVIDED WHEN SPECIFIED.
3. ACTUAL NUMBER OF INTERNAL PARALLEL CIRCUITS MAY BE A MULTIPLE OF THOSE SHOWN ABOVE.
4. LEAD COLORS ARE OPTIONAL. LEADS MUST ALWAYS BE NUMBERED AS SHOWN.
5. =MAGNET WIRE COIL END WITH I.D. NUMBER.
6. =MAGNET WIRE COIL END WITH I.D. SYMBOL.
7. SEE CW PRINT FOR NEST TO NEST CROSSOVER CONNECTIONS.

REV. DESC: ADD NEST NOTE		
REV. LTR: C	VERSION: 03	TDR: 000000445597
CD0005A05	FILE: \CKA\00024\847	REVISED: 12:51:06 11/15/2007
	MTL: -	BY: CKMICRO

BALDOR • DODGE • RELIANCE

3PH, DV, 9 LEADS, CK

CD0005A05