

DUTY MASTER ALTERNATING CURRENT MOTORS

617435-667

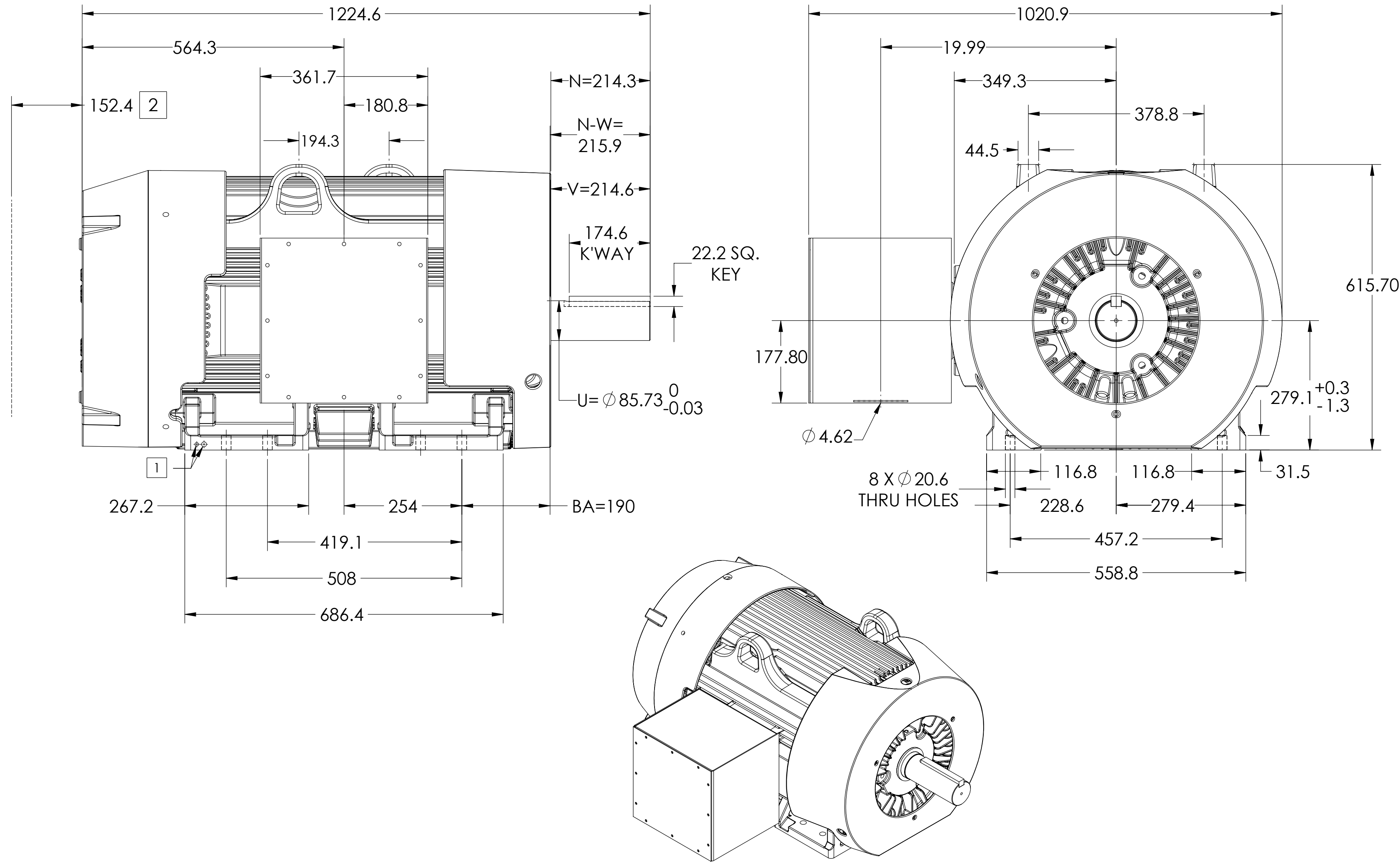
SQUIRREL-CAGE INDUCTION

ENCLOSURE: TOTALLY ENCLOSED

MOUNTING: FOOT, F1

FRAME G447T ABOVE NEMA RATINGS
INCLUDES G445T FRAME MOUNTING HOLES

COOLING: FAN COOLED



1 GROUND HOLES QTY 1 1/2-13 TAP; QTY 1 3/8-16 TAP

2 OBSTRUCTION MUST NO ENCROACH ON AIR INLET

IF MOUNTING CLEARANCE DETAILS ARE REQUIRED, CONSULT FACTORY.
MAXIMUM PERMISSIBLE SHAFT RUNOUT WHEN MEASURED AT END OF
STANDARD SHAFT EXTENSION IS 0.079

DIMENSIONS ARE IN MILLIMETERS; SEE SHEET 1 FOR INCHES.
WEIGHT (KGS): 1141, MOTOR WEIGHTS MAY VARY BY 15% DEPENDING ON RATING.
CUSTOMER IS RESPONSIBLE FOR DETERMINING THAT MOTOR PERFORMANCE IS SUITABLE IN THE APPLICATION.

REV. DESC: NEW			
REV: -	VERSION: 00	REVISED: 09-06-07 03/15/2017	TDR: 000001020107
MODEL NO. 617435-667		REF: -	
BY: USBRSPI		Material: -	

BALDOR

G447T/445T STD - FOOTED - SIDE/CENTER 14X14X12

SHEET NUMBER
2 OF 2

617435-667

617435-667