



---

# Customer information packet

## M3562T

.75HP, 855RPM, 3PH, 60HZ, 145T, 3530M, TEFC, F1

Class - None

Division - Not Applicable

## Specifications

Enclosure	TEFC
Frame	145T
Frame Material	Steel
Frequency	60.00 Hz
Haz Area Class and Group	None
Haz Area Division	Not Applicable
Motor Letter Type	Three Phase
Output @ Frequency	.750 HP @ 60 HZ
Phase	3
Synchronous Speed @ Frequency	900 RPM @ 60 HZ
Voltage @ Frequency	460.0 V @ 60 HZ 230.0 V @ 60 HZ 208.0 V @ 60 HZ
Agency Approvals	CSA UR
Ambient Temperature	40 °C
Auxillary Box	No Auxillary Box
Auxillary Box Lead Termination	None
Base Indicator	Rigid
Bearing Grease Type	Polyrex EM (-20F +300F)
Blower	None
Current @ Voltage	3.200 A @ 230.0 V 3.200 A @ 208.0 V 1.600 A @ 460.0 V
Design Code	B
Drip Cover	No Drip Cover
Duty Rating	CONT
Efficiency @ 100% Load	72.0 %
Electrically Isolated Bearing	Not Electrically Isolated
Feedback Device	NO FEEDBACK
Front Shaft Indicator	None
Heater Indicator	No Heater

## Part detail

Revision	E
Type	AC
Mech. spec.	35A001
Base	
Status	PRD/A
Elec. spec.	35WGG340
Layout	35LYA001
Eff. date	07-02-2024
CD Diagram	CD0005
Poles	08
Leads	9#18
Proprietary	False
Created date	02-23-2023

High Voltage Full Load Amps	1.6 a
Insulation Class	F
Inverter Code	Not Inverter
KVA Code	K
Lifting Lugs	No Lifting Lugs
Locked Bearing Indicator	No Locked Bearing
Motor Lead Quantity/Wire Size	9 @ 18 AWG
Motor Lead Termination	Flying Leads
Motor Standards	NEMA
Motor Type	3530M
Mounting Arrangement	F1
Number of Poles	8
Overall Length	14.17 IN
Power Factor	59
Product Family	General Purpose
Pulley End Bearing Type	Ball
Pulley Face Code	Standard
Pulley Shaft Indicator	Standard
Rodent Screen	None
RoHS Status	ROHS COMPLIANT
Service Factor	1.15
Shaft Diameter	0.875 IN
Shaft Ground Indicator	No Shaft Grounding
Shaft Rotation	Reversible
Shaft Slinger Indicator	No Slinger
Speed	855 rpm
Speed Code	Single Speed
Starting Method	Direct on line
Thermal Device - Bearing	None
Thermal Device - Winding	None
Vibration Sensor Indicator	No Vibration Sensor
Winding Thermal 1	None
Winding Thermal 2	None

**Nameplate**

<b>NP1256L</b>									
<b>CAT.NO.</b>	M3562T								
<b>SPEC.</b>	35A001G340G1								
<b>HP</b>	.75								
<b>VOLTS</b>	208-230/460								
<b>AMP</b>	3.2/1.6								
<b>RPM</b>	855								
<b>FRAME</b>	145T		<b>HZ</b>	60		<b>PH</b>	3		
<b>SER.F.</b>	1.15	<b>CODE</b>	K	<b>DES</b>	B	<b>CLASS</b>	F		
<b>NEMA-NOM-EFF</b>	72	<b>PF</b>	59						
<b>RATING</b>	40C AMB-CONT								
<b>CC</b>									
<b>DE</b>	6205	<b>ODE</b>	6203						
<b>ENCL</b>	TEFC	<b>SN</b>							
	SFA 3.46-3.52/1.76								

**AC Induction Motor Performance Data**

Record # 87784

Preliminary Data Sheet

<b>Winding:</b> 35WGG340-R001		<b>Type:</b> 3530M		<b>Enclosure:</b> TEFC	
<b>Nameplate Data</b>			<b>460 V, 60 Hz: High Voltage Connection</b>		
<b>Rated Output (HP)</b>	.75	<b>Full Load Torque</b>	4.6 LB-FT		
<b>Volts</b>	208-230/460	<b>Start Configuration</b>	direct on line		
<b>Full Load Amps</b>	3.2/1.6	<b>Breakdown Torque</b>	13.88 LB-FT		
<b>R.P.M.</b>	855	<b>Pull-up Torque</b>	9.52 LB-FT		
<b>Hz</b>	60	<b>Phase</b>	3	<b>Locked-rotor Torque</b>	9.95 LB-FT
<b>NEMA Design Code</b>	B	<b>KVA Code</b>	K	<b>Starting Current</b>	7.63 A
<b>Service Factor (S.F.)</b>	1.15	<b>No-load Current</b>	1.26 A		
<b>NEMA Nom. Eff.</b>	72	<b>Power Factor</b>	59	<b>Line-line Res. @ 25°C</b>	27.9 Ω
<b>Rating - Duty</b>	40C AMB-CONT		<b>Temp. Rise @ Rated Load</b>	67°C	
<b>S.F. Amps</b>			<b>Temp. Rise @ S.F. Load</b>	77°C	
			<b>Locked-rotor Power Factor</b>	62.7	
			<b>Rotor inertia</b>	0.217 lb-ft <sup>2</sup>	

**Load Characteristics 460 V, 60 Hz, 0.75 HP**

<b>% of Rated Load</b>	<b>25</b>	<b>50</b>	<b>75</b>	<b>100</b>	<b>125</b>	<b>150</b>	<b>S.F.</b>
<b>Power Factor</b>	25	38	50	59	66	72	63
<b>Efficiency</b>	55	67.2	71.5	72.6	71.8	69.1	72.1
<b>Speed</b>	890	880	869	855	840	817	846
<b>Line amperes</b>	1.27	1.35	1.46	1.63	1.84	2.12	1.76

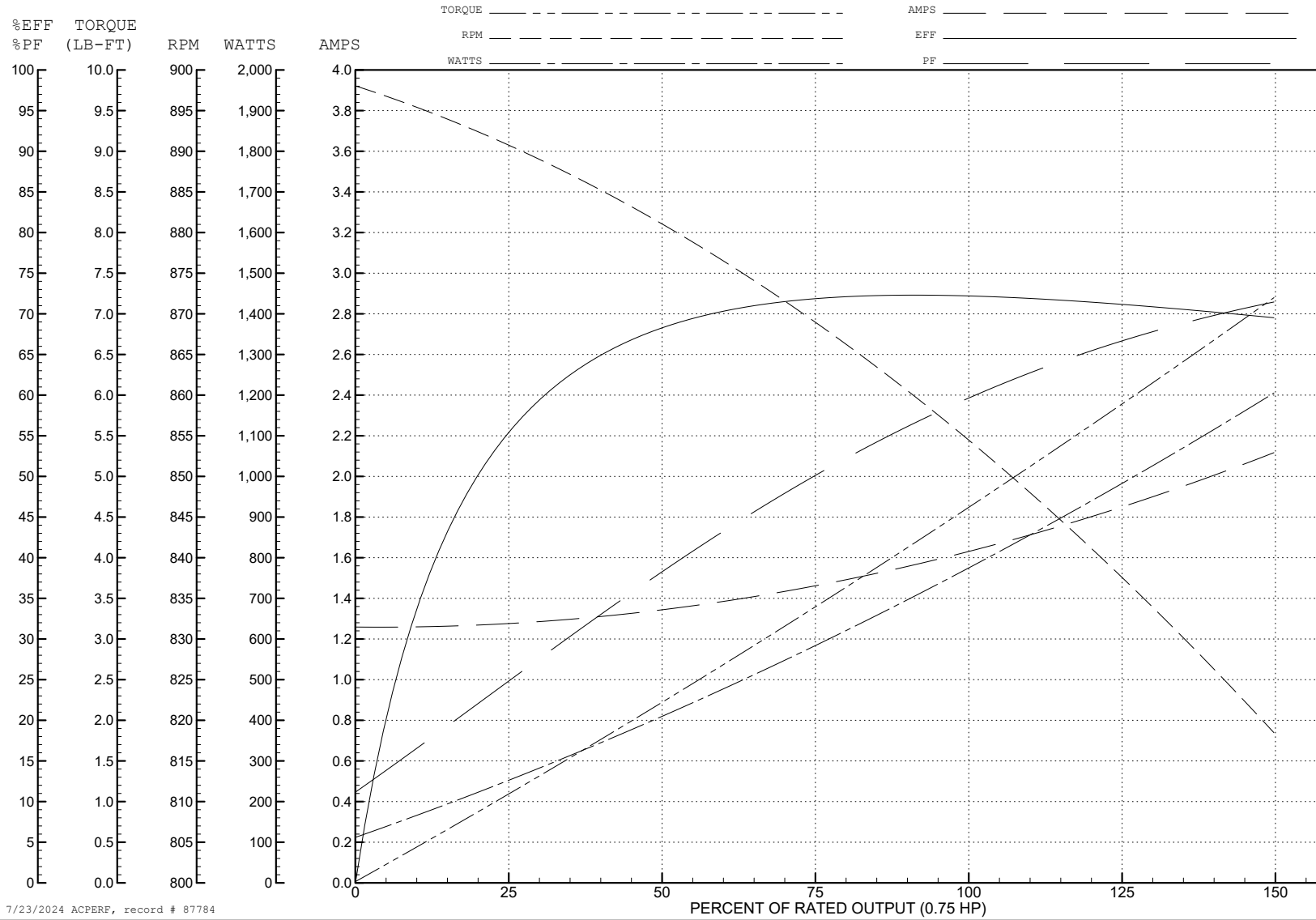
ABB Motors and Mechanical Inc.

WINDING # 35WGG340

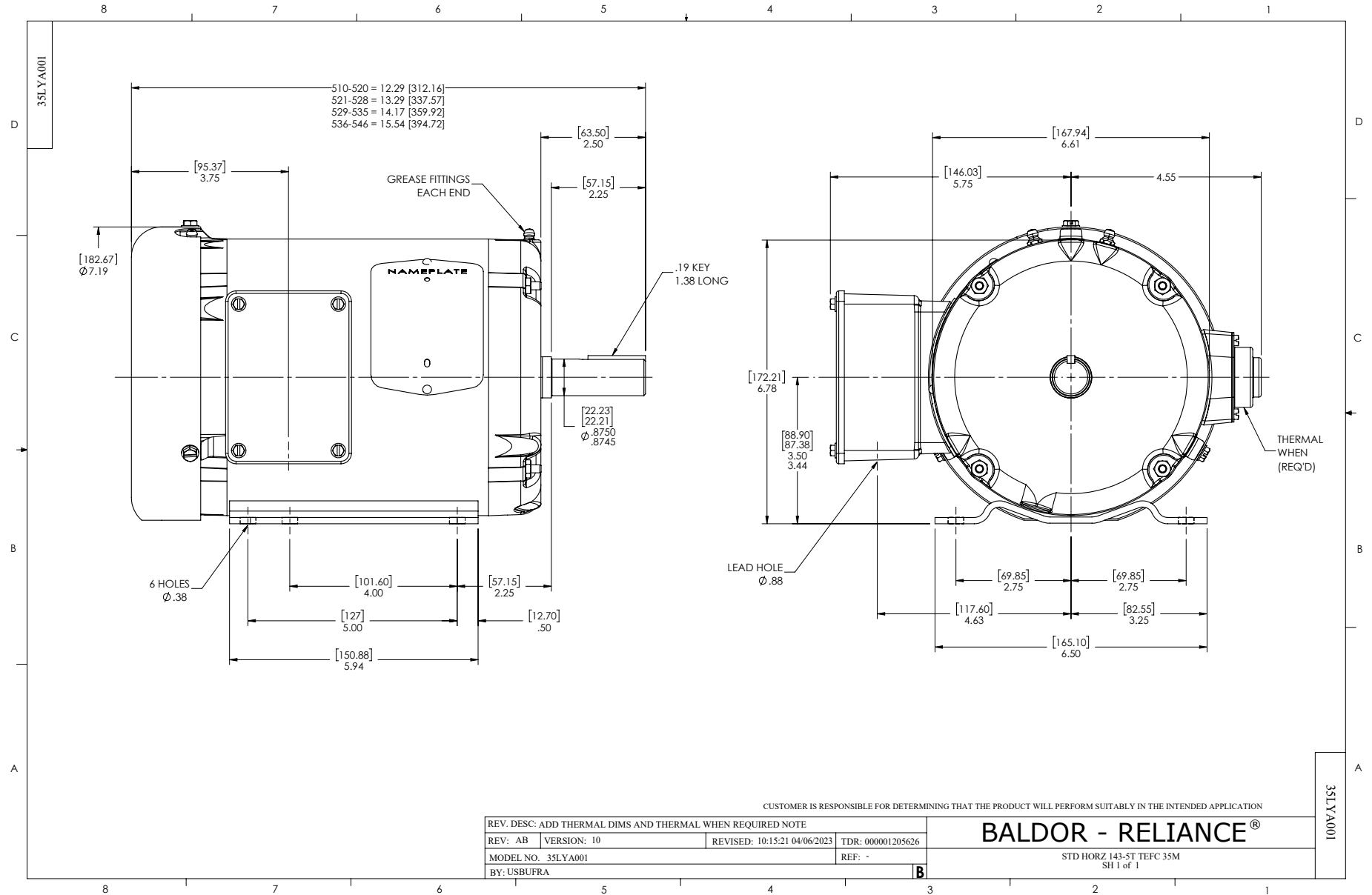
0.75 HP 3 PH 60 HZ 855 RPM 460 V 3530M

Typical performance - not guaranteed values.

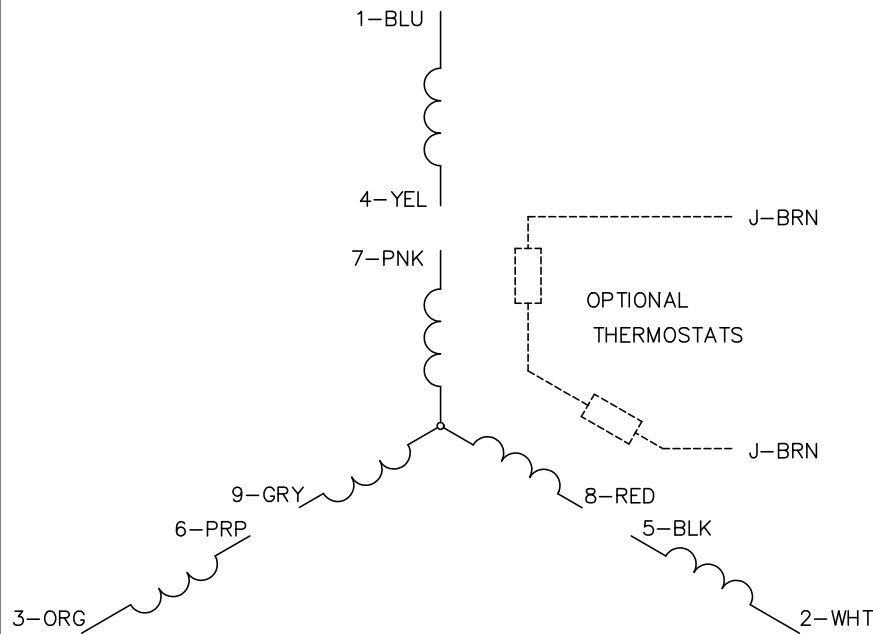
TORQUES (LB-FT): PO=13.88 PU=9.52 LR=9.95 LRA=7.63



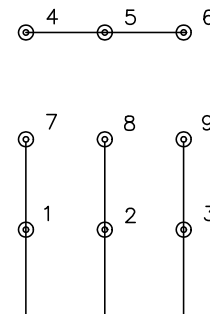
7/23/2024 ACPERF, record # 87784



CD0005



LOW VOLTAGE  
(2Y)



LINE

HIGH VOLTAGE  
(1Y)



LINE

NOTES:

1. INTERCHANGE ANY TWO LINE LEADS TO REVERSE ROTATION.
2. OPTIONAL THERMOSTATS ARE PROVIDED WHEN SPECIFIED.
3. ACTUAL NUMBER OF INTERNAL PARALLEL CIRCUITS MAY BE A MULTIPLE OF THOSE SHOWN ABOVE.
4. LEAD COLORS ARE OPTIONAL. LEADS MUST ALWAYS BE NUMBERED AS SHOWN.

REV. DESC: REVISE TO SHOW OPTIONAL COLORS			
REV. LTR: E	BY: JLP	REVISED: 01/19/99 10:15	TDR: 0171435
S00000		FILE: AAA00005140	MDL: -
		MTL: -	

**BALDOR ELECTRIC Co.**

3PH, DV, 9 LEADS

CD0005