

BALDOR • RELIANCE

Customer information packet

37E031R405G1

3HP, 1770RPM, 3PH, 60HZ, 225, 3717M, OPEN, F1, N

Class -

Division - Not Applicable

Specifications

Enclosure	ODP
Frame	225
Frame Material	Steel
Frequency	60.00 Hz
Motor Letter Type	Three Phase
Output @ Frequency	3.000 HP @ 60 HZ
Phase	3
Synchronous Speed @ Frequency	1800 RPM @ 60 HZ
Voltage @ Frequency	208.0 V @ 60 HZ 230.0 V @ 60 HZ 460.0 V @ 60 HZ
XP Division	Not Applicable
Agency Approvals	CSA UR
Ambient Temperature	40 °C
Auxillary Box	No Auxillary Box
Auxillary Box Lead Termination	None
Base Indicator	RG
Bearing Grease Type	Polyrex EM (-20F +300F)
Blower	None
Current @ Voltage	5.700 A @ 460.0 V 11.400 A @ 230.0 V 10.600 A @ 208.0 V
Design Code	A
Drip Cover	No Drip Cover
Duty Rating	CONT
Efficiency @ 100% Load	82.5 %
Electrically Isolated Bearing	Not Electrically Isolated
Feedback Device	NO FEEDBACK
Front Face Code	Standard
Front Shaft Indicator	None
Heater Indicator	No Heater

Part detail

Revision	J
Type	AC
Mech. spec.	37E031
Base	
Status	INA/A
Elec. spec.	37WGR405
Layout	37LYE031
Eff. date	03-10-2017
CD Diagram	CD0005
Poles	04
Leads	9#14
Proprietary	False
Created date	10-05-2012

High Voltage Full Load Amps	5.7 a
Insulation Class	B
Inverter Code	Not Inverter
KVA Code	L
Lifting Lugs	Standard Lifting Lugs
Locked Bearing Indicator	No Locked Bearing
Motor Lead Exit	Ko Box
Motor Lead Quantity/Wire Size	9 @ 14 AWG
Motor Lead Termination	Flying Leads
Motor Standards	NEMA
Motor Type	3717M
Mounting Arrangement	F1
Number of Poles	4
Overall Length	16.32 IN
Power Factor	60
Product Family	General Purpose
Pulley End Bearing Type	Ball
Pulley Face Code	Standard
Pulley Shaft Indicator	Standard
Rodent Screen	None
Service Factor	1.15
Shaft Diameter	1.000 IN
Shaft Extension Location	Pulley End
Shaft Ground Indicator	No Shaft Grounding
Shaft Rotation	Reversible
Shaft Slinger Indicator	No Slinger
Speed	1770 rpm
Speed Code	Single Speed
Starting Method	Direct on line
Thermal Device - Bearing	None
Thermal Device - Winding	None
Vibration Sensor Indicator	No Vibration Sensor
Winding Thermal 1	None
Winding Thermal 2	None

Nameplate

NP1256L									
CAT.NO.									
SPEC.	37E031R405G1								
HP	3								
VOLTS	208-230/460								
AMP	10.6-11.4/5.7								
RPM	1770								
FRAME	225		HZ	60		PH	3		
SER.F.	1.15	CODE	L	DES	A	CLASS	B		
NEMA-NOM-EFF	82.5	PF	60						
RATING	40C AMB-CONT								
CC									
DE	6307	ODE	6206						
ENCL	OPEN	SN							

Accessories

Part number	Description	Multiplier
37-1404	C FACE KIT	A8

AC Induction Motor Performance Data

Record # 40657

Typical performance - not guaranteed values

Winding: 37WGR405-R001		Type: 3717M		Enclosure: OPEN	
Nameplate Data			460 V, 60 Hz: High Voltage Connection		
Rated Output (HP)		3	Full Load Torque		8.92 LB-FT
Volts		208-230/460	Start Configuration		direct on line
Full Load Amps		10.6-11.4/5.7	Breakdown Torque		42.2 LB-FT
R.P.M.		1770	Pull-up Torque		15.2 LB-FT
Hz	60 Phase	3	Locked-rotor Torque		21.8 LB-FT
NEMA Design Code	A	KVA Code L	Starting Current		35.2 A
Service Factor (S.F.)		1.15	No-load Current		4.44 A
NEMA Nom. Eff.	82.5	Power Factor 60	Line-line Res. @ 25°C		4.1718 Ω
Rating - Duty		40C AMB-CONT	Temp. Rise @ Rated Load		24°C
S.F. Amps			Temp. Rise @ S.F. Load		27°C
			Locked-rotor Power Factor		53
			Rotor inertia		0.418 LB-FT ²

Load Characteristics 460 V, 60 Hz, 3 HP

% of Rated Load	25	50	75	100	125	150	S.F.
Power Factor	25	39	51	60	67	72	64
Efficiency	63.2	76.2	81.2	83.4	84.3	84.4	83.9
Speed	1793.1	1786.3	1779.5	1772.3	1763.9	1754.9	1767
Line amperes	4.48	4.72	5.11	5.63	6.22	6.97	5.98

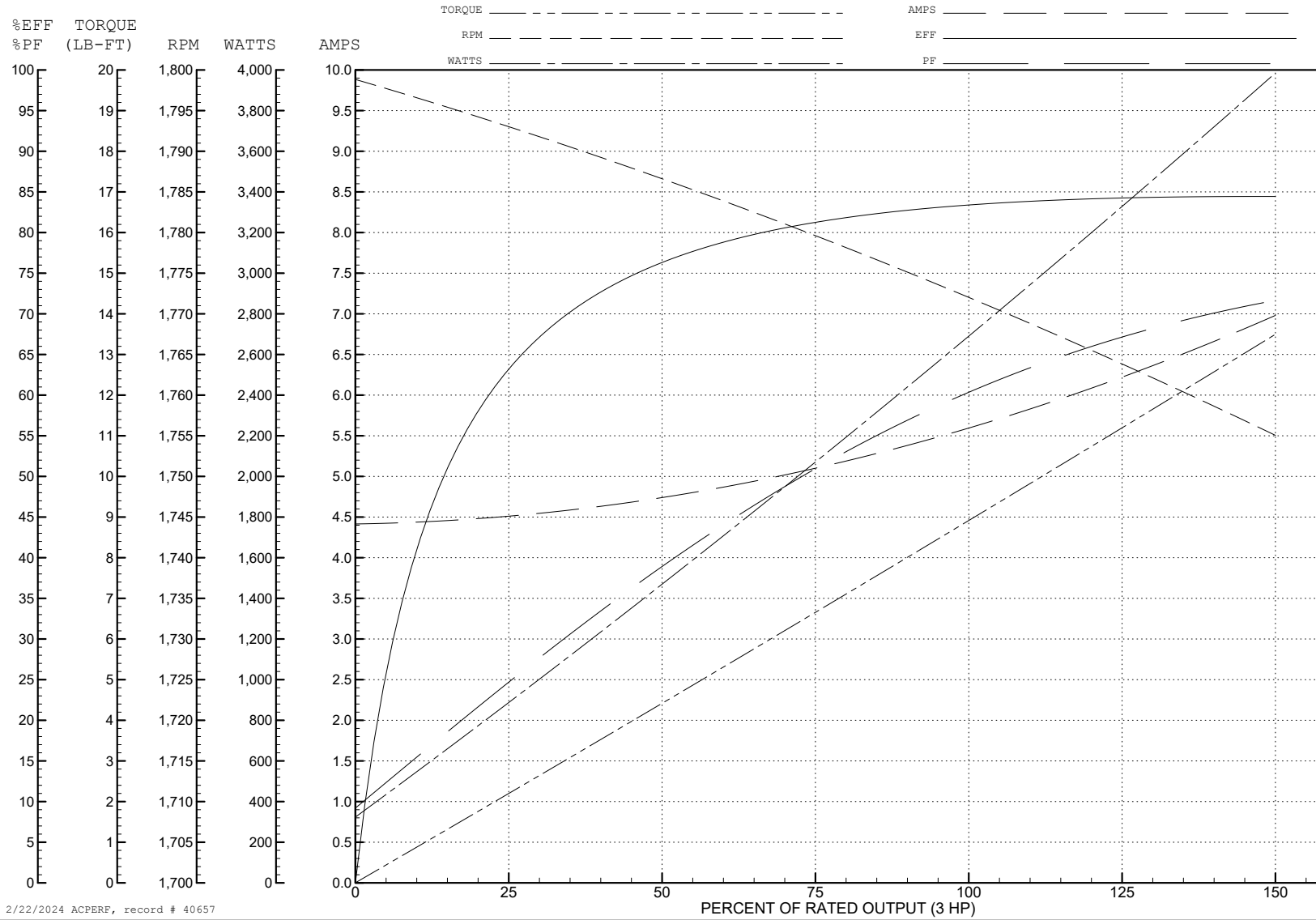
ABB Motors and Mechanical Inc.

WINDING # 37WGR405

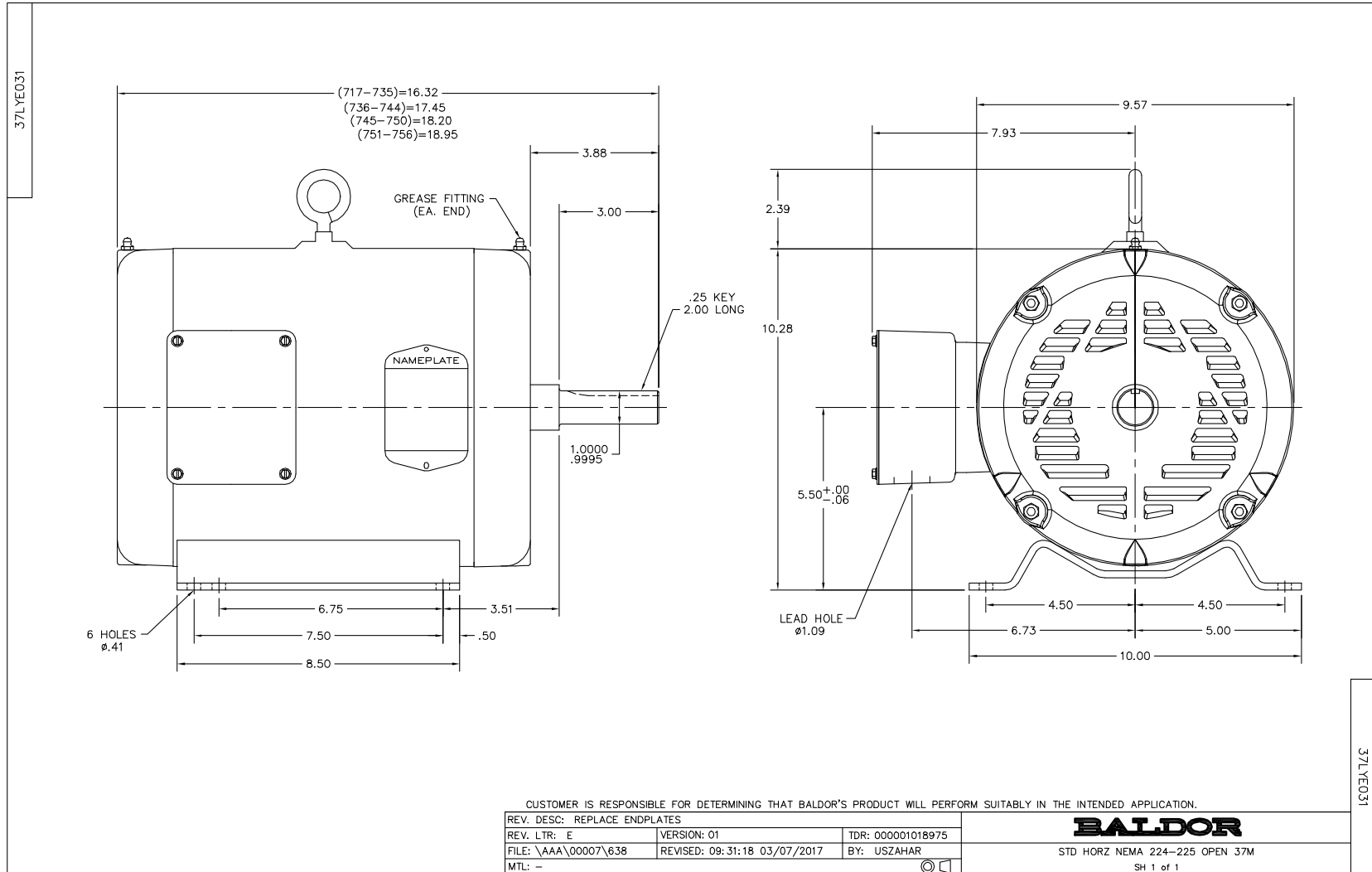
Typical performance - not guaranteed values.

3 HP 3 PH 60 HZ 1770 RPM 460 V 3717M

TORQUES (LB-FT): PO=42.2 PU=15.2 LR=21.8 LRA=35.2



2/22/2024 ACPERF, record # 40657



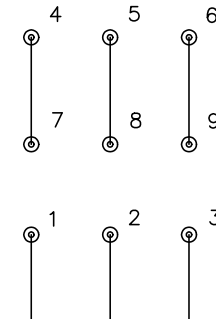
CD0005



LOW VOLTAGE
(2Y)



HIGH VOLTAGE
(1Y)



NOTES:

1. INTERCHANGE ANY TWO LINE LEADS TO REVERSE ROTATION.
2. OPTIONAL THERMOSTATS ARE PROVIDED WHEN SPECIFIED.
3. ACTUAL NUMBER OF INTERNAL PARALLEL CIRCUITS MAY BE A MULTIPLE OF THOSE SHOWN ABOVE.
4. LEAD COLORS ARE OPTIONAL. LEADS MUST ALWAYS BE NUMBERED AS SHOWN.

CD0005

REV. DESC: REVISE TO SHOW OPTIONAL COLORS			
REV. LTR: E	BY: JLP	REVISED: 01/19/99 10:15	TDR: 0171435
S00000		FILE: AAA00005140	MDL: -
		MTL: -	

BALDOR ELECTRIC Co.

3PH, DV, 9 LEADS