



Customer information packet

M3009

.5HP, 3450RPM, 3PH, 60HZ, 48, 3410M, OPEN, F1

Class -

Division - Not Applicable

Specifications

| | |
|--------------------------------|---|
| Enclosure | ODP |
| Frame | 48 |
| Frame Material | Steel |
| Frequency | 60.00 Hz |
| Motor Letter Type | Three Phase |
| Output @ Frequency | .500 HP @ 60 HZ |
| Phase | 3 |
| Synchronous Speed @ Frequency | 3600 RPM @ 60 HZ |
| Voltage @ Frequency | 460.0 V @ 60 HZ 230.0 V @ 60 HZ |
| XP Division | Not Applicable |
| Agency Approvals | CSA UR |
| Ambient Temperature | 40 °C |
| Auxillary Box | No Auxillary Box |
| Auxillary Box Lead Termination | None |
| Base Indicator | RG |
| Bearing Grease Type | Polyrex EM (-20F +300F) |
| Blower | None |
| Current @ Voltage | 1.000 A @ 460.0 V 2.000 A @ 230.0 V 2.600 A @ 208.0 V |
| Design Code | B |
| Drip Cover | No Drip Cover |
| Duty Rating | CONT |
| Efficiency @ 100% Load | 68.0 % |
| Electrically Isolated Bearing | Not Electrically Isolated |
| Feedback Device | NO FEEDBACK |
| Front Face Code | Standard |
| Front Shaft Indicator | None |
| Heater Indicator | No Heater |
| High Voltage Full Load Amps | 1.0 a |

Part detail

| | |
|--------------|------------|
| Revision | Q |
| Type | AC |
| Mech. spec. | 34F002 |
| Base | |
| Status | NLA/A |
| Elec. spec. | 34WG0232 |
| Layout | 34LYF002 |
| Eff. date | 01-21-2015 |
| CD Diagram | CD0005 |
| Poles | 02 |
| Leads | 9#18 |
| Proprietary | False |
| Created date | 01-01-0001 |

| | |
|--------------------------------------|---------------------|
| Insulation Class | B |
| Inverter Code | Not Inverter |
| KVA Code | L |
| Lifting Lugs | No Lifting Lugs |
| Locked Bearing Indicator | No Locked Bearing |
| Motor Lead Exit | Ko Box |
| Motor Lead Quantity/Wire Size | 9 @ 18 AWG |
| Motor Lead Termination | Flying Leads |
| Motor Standards | NEMA |
| Motor Type | 3410M |
| Mounting Arrangement | F1 |
| Number of Poles | 2 |
| Overall Length | 9.13 IN |
| Power Factor | 63 |
| Product Family | General Purpose |
| Pulley End Bearing Type | Ball |
| Pulley Face Code | Standard |
| Pulley Shaft Indicator | Standard |
| Rodent Screen | None |
| RoHS Status | ROHS COMPLIANT |
| Service Factor | 1.25 |
| Shaft Diameter | 0.500 IN |
| Shaft Extension Location | Pulley End |
| Shaft Ground Indicator | No Shaft Grounding |
| Shaft Rotation | Reversible |
| Shaft Slinger Indicator | No Slinger |
| Speed | 3450 rpm |
| Speed Code | Single Speed |
| Starting Method | Direct on line |
| Thermal Device - Bearing | None |
| Thermal Device - Winding | None |
| Vibration Sensor Indicator | No Vibration Sensor |

Nameplate

| NP1256L | | | | | | | | | |
|---------------------|--------------|-------------|------------|------------|---|--------------|---|--|--|
| CAT.NO. | M3009 | | | | | | | | |
| SPEC. | 34F02-232 | | | | | | | | |
| HP | .5 | | | | | | | | |
| VOLTS | 230/460 | | | | | | | | |
| AMP | 2/1 | | | | | | | | |
| RPM | 3450 | | | | | | | | |
| FRAME | 48 | | HZ | 60 | | PH | 3 | | |
| SER.F. | 1.25 | CODE | J | DES | B | CLASS | B | | |
| NEMA-NOM-EFF | 68 | PF | 63 | | | | | | |
| RATING | 40C AMB-CONT | | | | | | | | |
| CC | | | | | | | | | |
| DE | 6203 | | ODE | 6203 | | | | | |
| ENCL | OPEN | SN | | | | | | | |
| | SFA 2.4/1.2 | | | | | | | | |

AC Induction Motor Performance Data

Record # 6559

Typical performance - not guaranteed values

| Winding: 34WG0232-R001 | | Type: 3410M | | Enclosure: TEFC | |
|-------------------------------|--------------|----------------------------------|--|------------------------|--|
| Nameplate Data | | | 460 V, 60 Hz: High Voltage Connection | | |
| Rated Output (HP) | .5 | Full Load Torque | 0.75 LB-FT | | |
| Volts | 230/460 | Start Configuration | direct on line | | |
| Full Load Amps | 2/1 | Breakdown Torque | 3.4 LB-FT | | |
| R.P.M. | 3450 | Pull-up Torque | 2.7 LB-FT | | |
| Hz | 60 | Locked-rotor Torque | 3 LB-FT | | |
| NEMA Design Code | B | Starting Current | 6 A | | |
| Service Factor (S.F.) | 1.25 | No-load Current | 0.9 A | | |
| NEMA Nom. Eff. | 68 | Line-line Res. @ 25°C | 35.1 Ω | | |
| Rating - Duty | 40C AMB-CONT | Temp. Rise @ Rated Load | 58°C | | |
| S.F. Amps | 2.4/1.2 | Temp. Rise @ S.F. Load | 69°C | | |
| | | Locked-rotor Power Factor | 78 | | |
| | | Rotor inertia | 0.0093 LB-FT ² | | |

Load Characteristics 460 V, 60 Hz, 0.5 HP

| % of Rated Load | 25 | 50 | 75 | 100 | 125 | 150 | S.F. |
|------------------------|-----------|-----------|-----------|------------|------------|------------|-------------|
| Power Factor | 33 | 44 | 56 | 64 | 70 | 77 | 70 |
| Efficiency | 41.4 | 56.3 | 64 | 67.2 | 68.4 | 68.5 | 68.4 |
| Speed | 3563 | 3535 | 3501 | 3466 | 3432 | 3381 | 3432 |
| Line amperes | 0.91 | 0.97 | 1.01 | 1.1 | 1.2 | 1.33 | 1.2 |

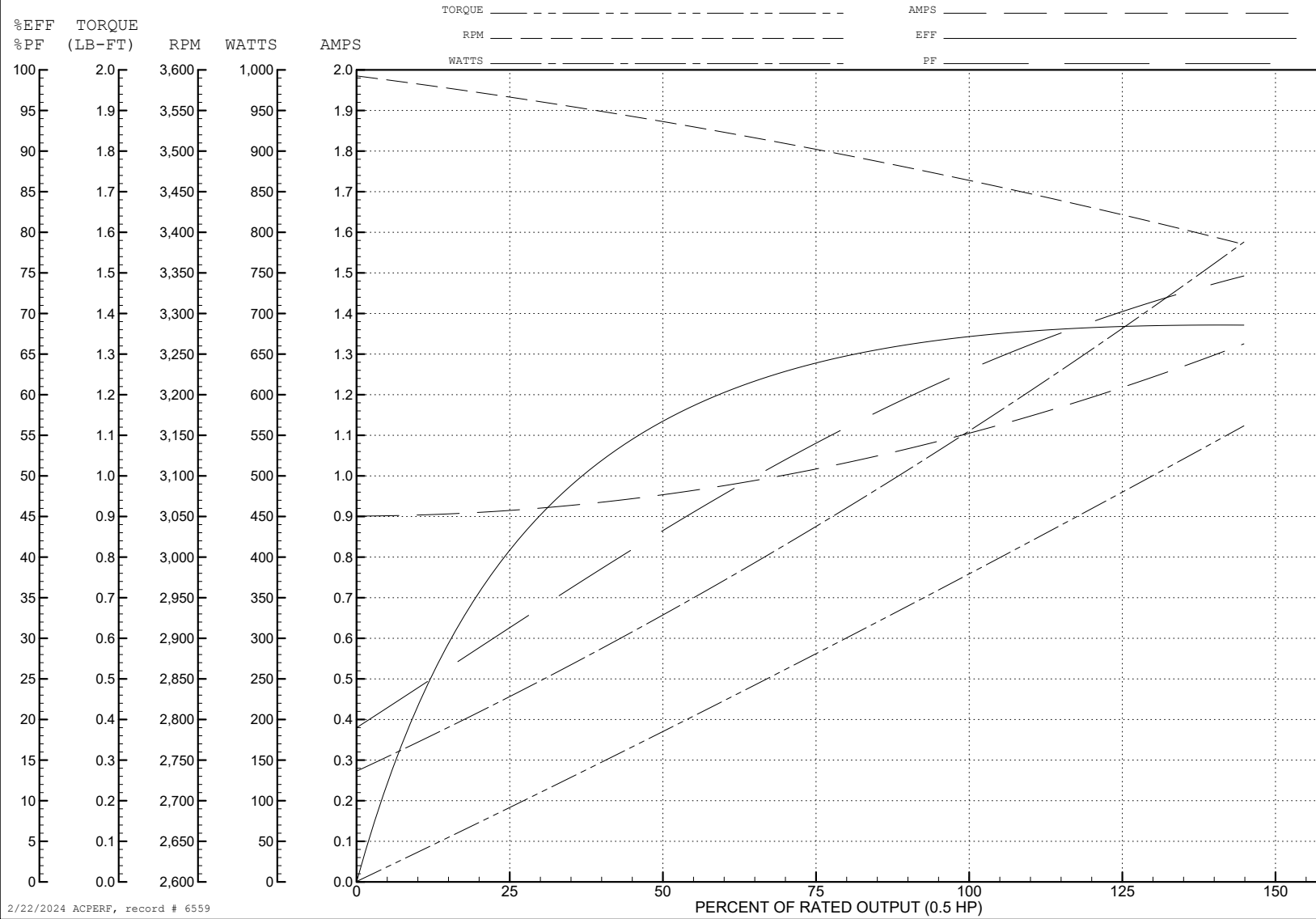
ABB Motors and Mechanical Inc.

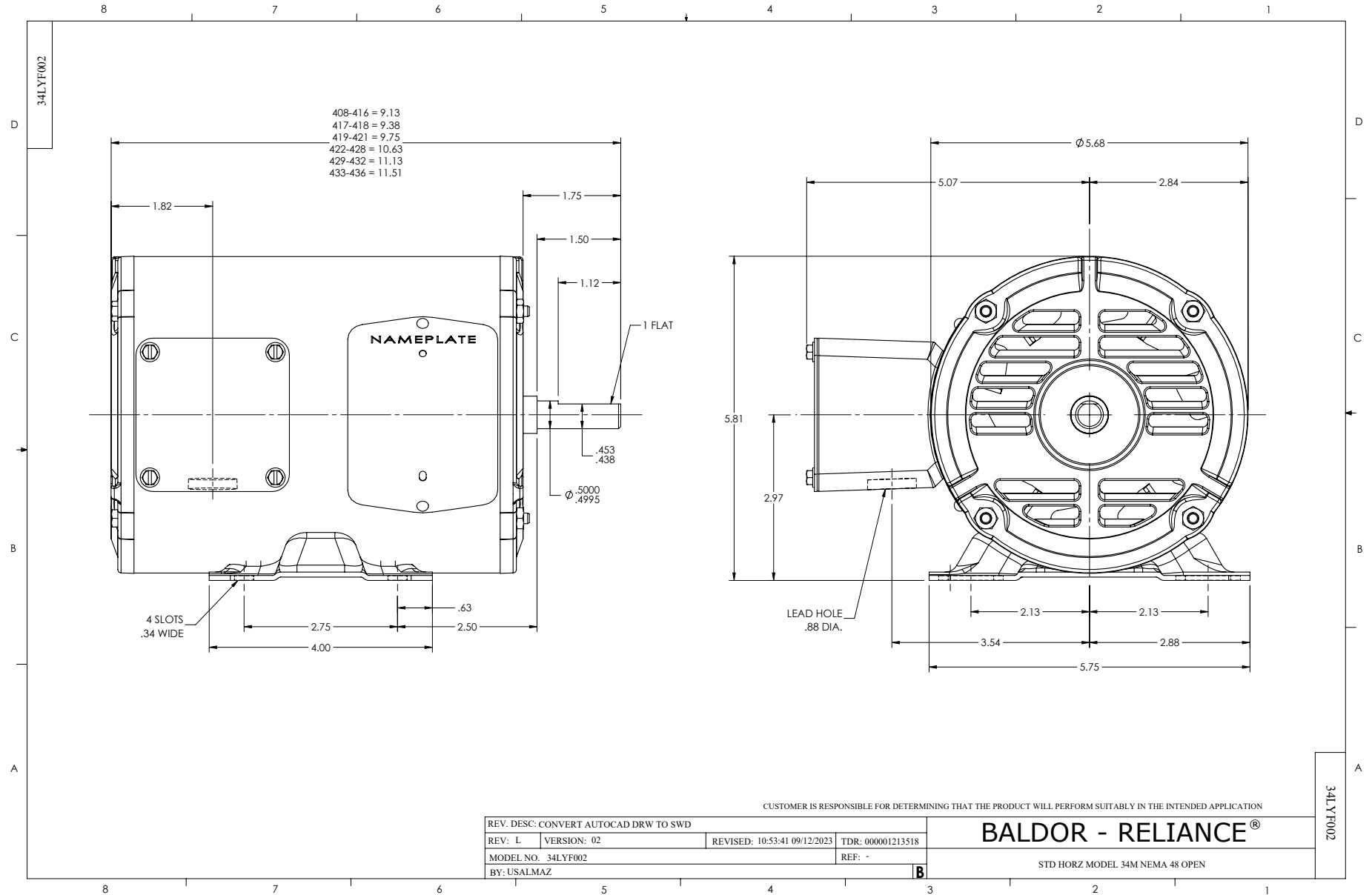
WINDING # 34WG0232

0.5 HP 3 PH 60 HZ 3450 RPM 460 V 3410M

Typical performance - not guaranteed values.

TORQUES (LB-FT): PO=3.4 PU=2.7 LR=3 LRA=6





CD0005



LOW VOLTAGE
(2Y)



LINE

HIGH VOLTAGE
(1Y)



LINE

NOTES:

1. INTERCHANGE ANY TWO LINE LEADS TO REVERSE ROTATION.
2. OPTIONAL THERMOSTATS ARE PROVIDED WHEN SPECIFIED.
3. ACTUAL NUMBER OF INTERNAL PARALLEL CIRCUITS MAY BE A MULTIPLE OF THOSE SHOWN ABOVE.
4. LEAD COLORS ARE OPTIONAL. LEADS MUST ALWAYS BE NUMBERED AS SHOWN.

CD0005

| | | | |
|---|---------|-------------------------|--------------|
| REV. DESC: REVISE TO SHOW OPTIONAL COLORS | | | |
| REV. LTR: E | BY: JLP | REVISED: 01/19/99 10:15 | TDR: 0171435 |
| S00000 | | FILE: AAA00005140 | MDL: - |
| | | MTL: - | |

BALDOR ELECTRIC Co.

3PH, DV, 9 LEADS